

A photograph of a walrus resting on a sandy beach. The walrus is the central focus, lying on its side with its head turned towards the left. It has two long, white tusks protruding from its mouth. The walrus's skin is thick and wrinkled, with a mottled brown and grey color. In the background, several other walrus are visible, some resting on the sand and others partially submerged in the water. The beach is composed of dark, wet sand, and the water is a pale, greyish-blue color. The overall scene is a natural, serene depiction of walrus life.

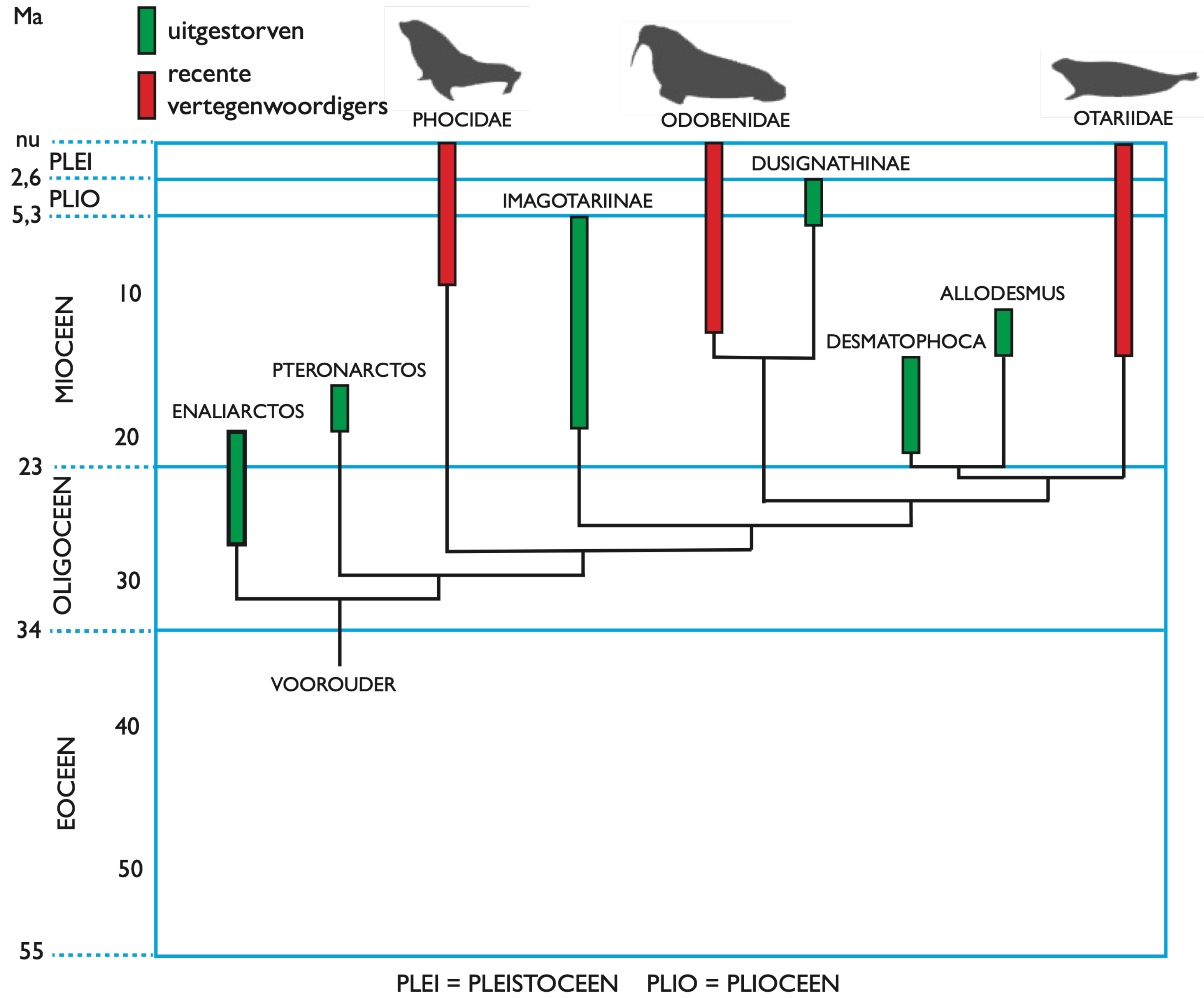
**WAS DE VLAAMSE KUST OOIT EEN
VAKANTIEOORD VOOR WALRUSSEN?**

VLIZ, 14 oktober 2022



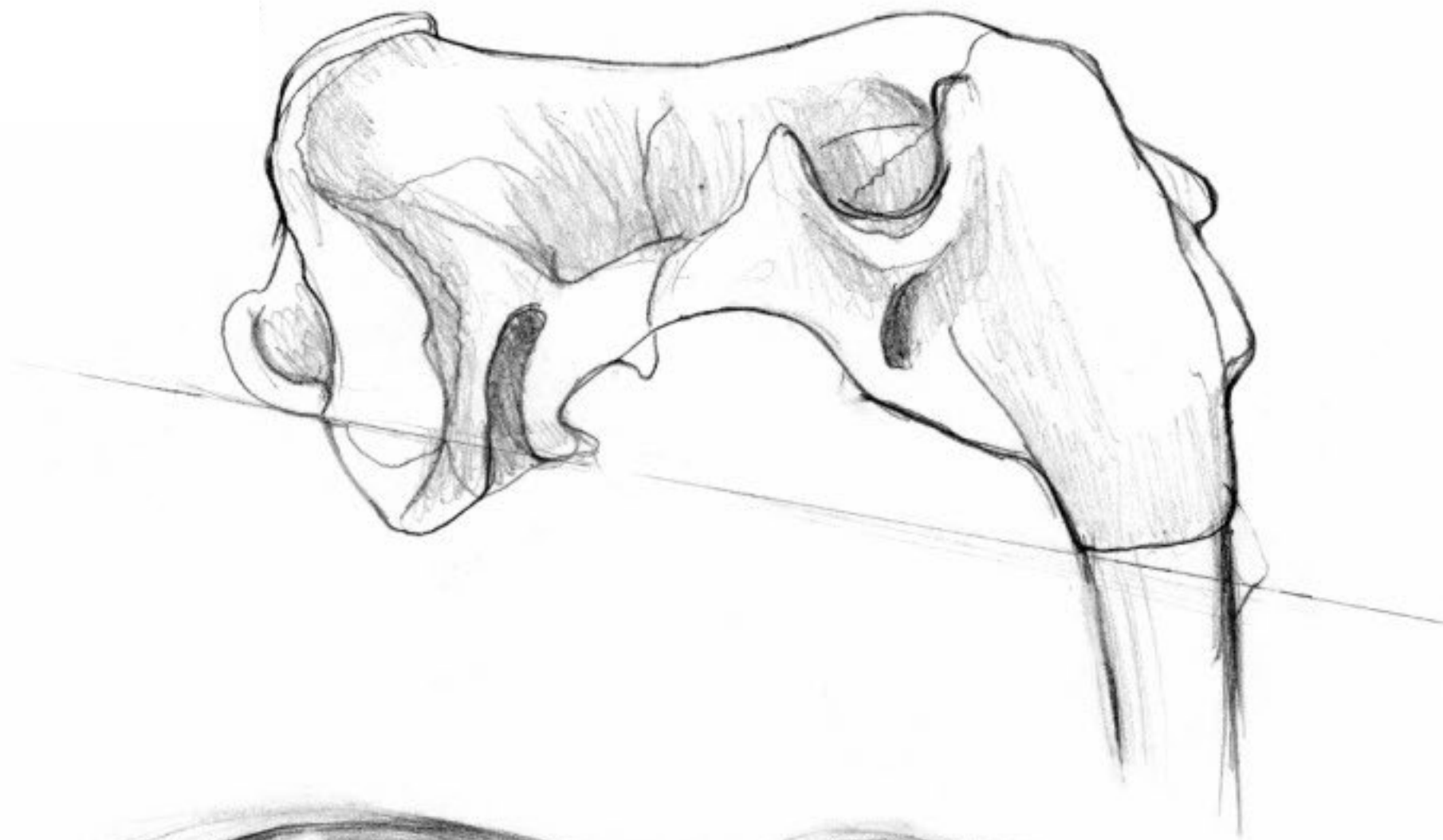
Morsa/Walrus
Odobenus rosmarus (Linnaeus, 1758)
(schelet)
Oceanul Arctic


A NU SE
ATINGE



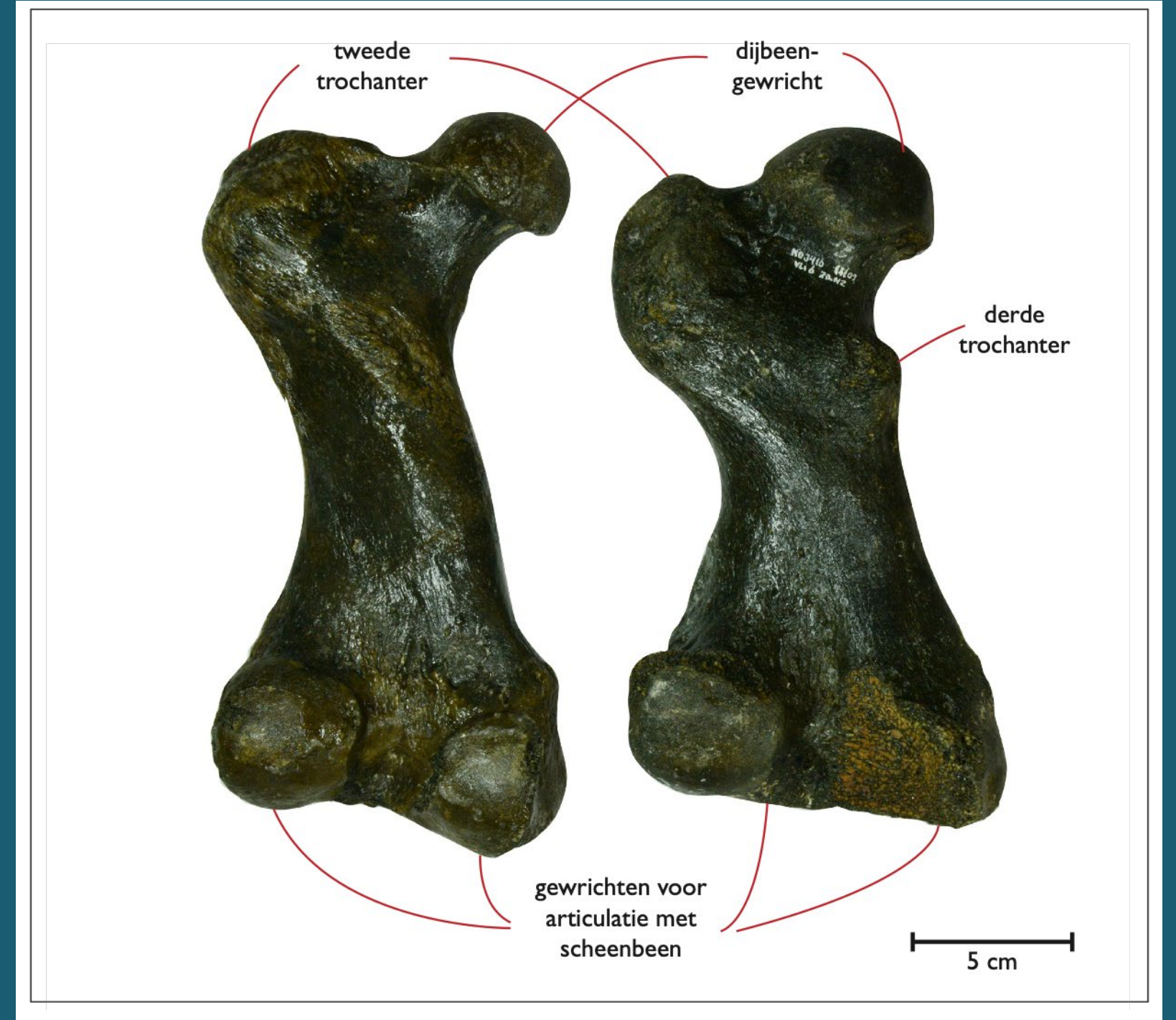
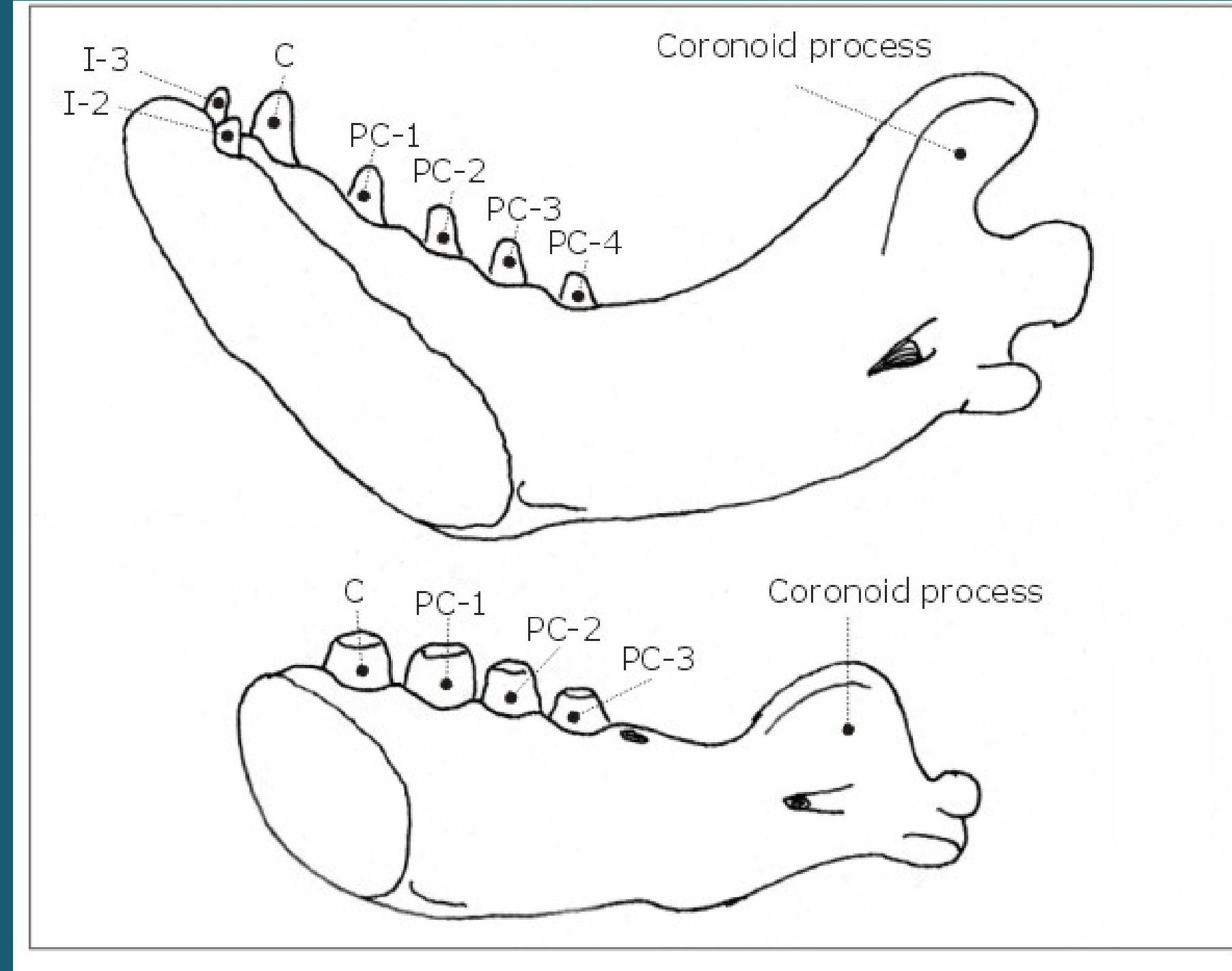
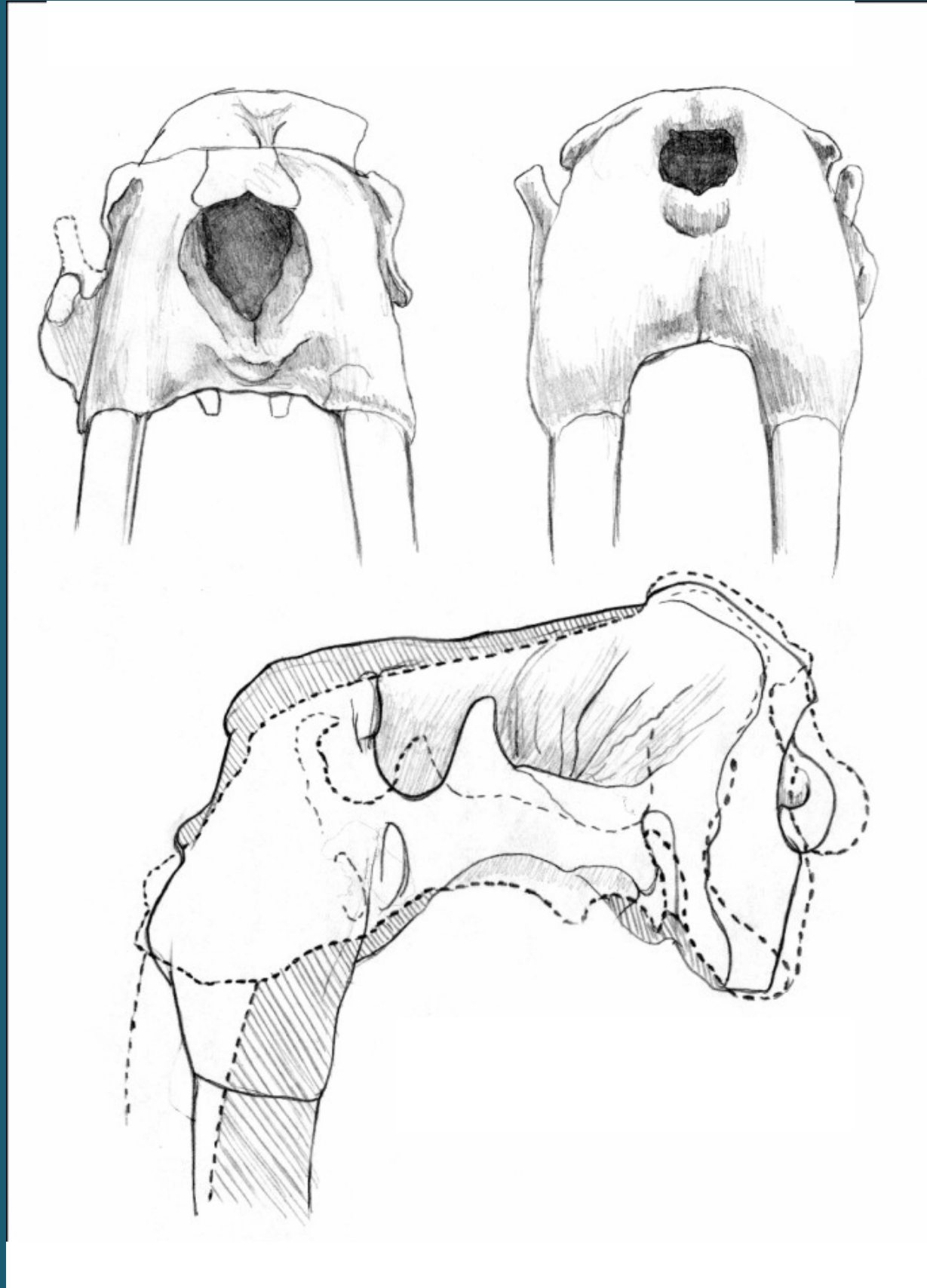
PLEI = PLEISTOCENE PLIO = PLIOCENE

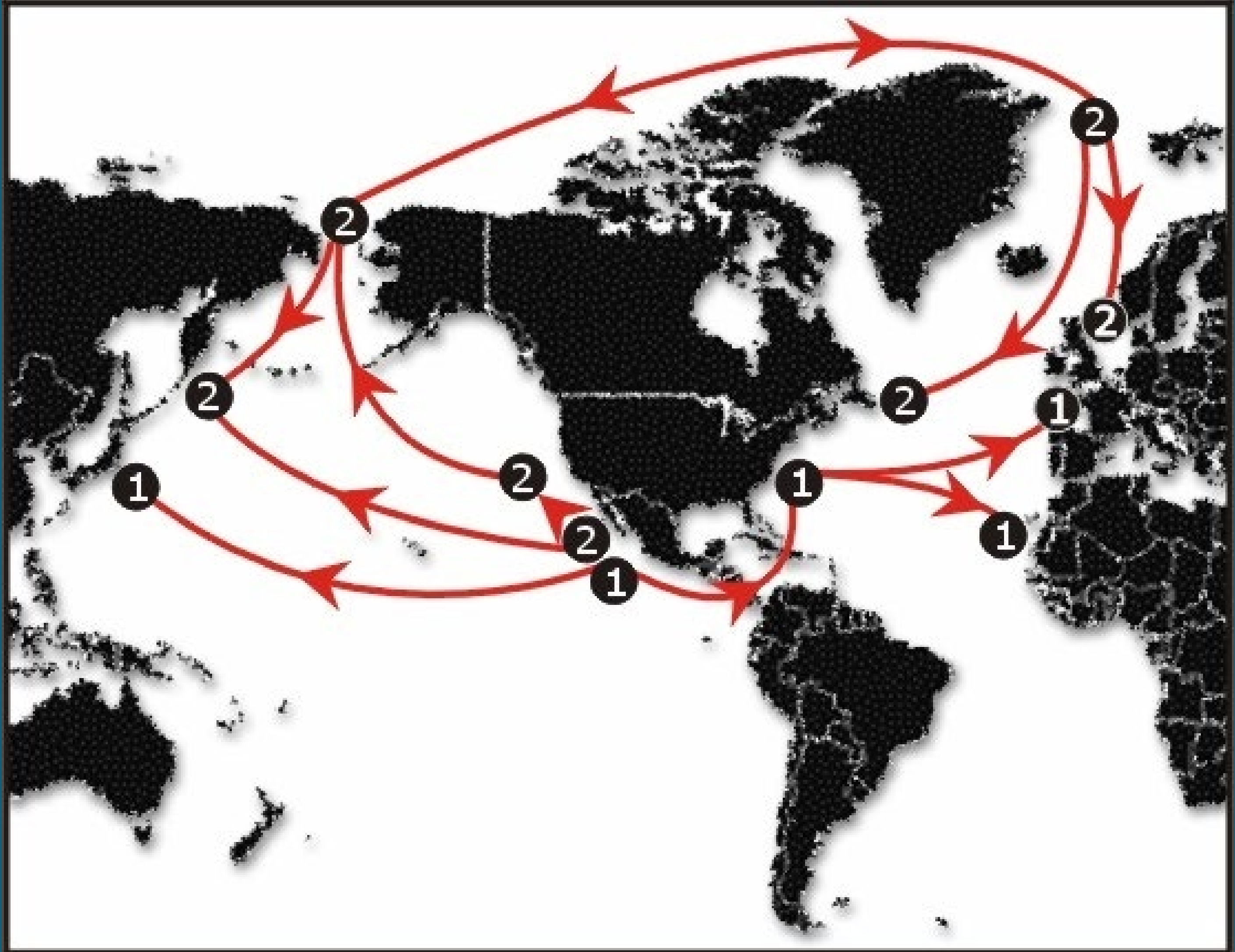
Odobenus rosmarus



Ontocetus emmonsi







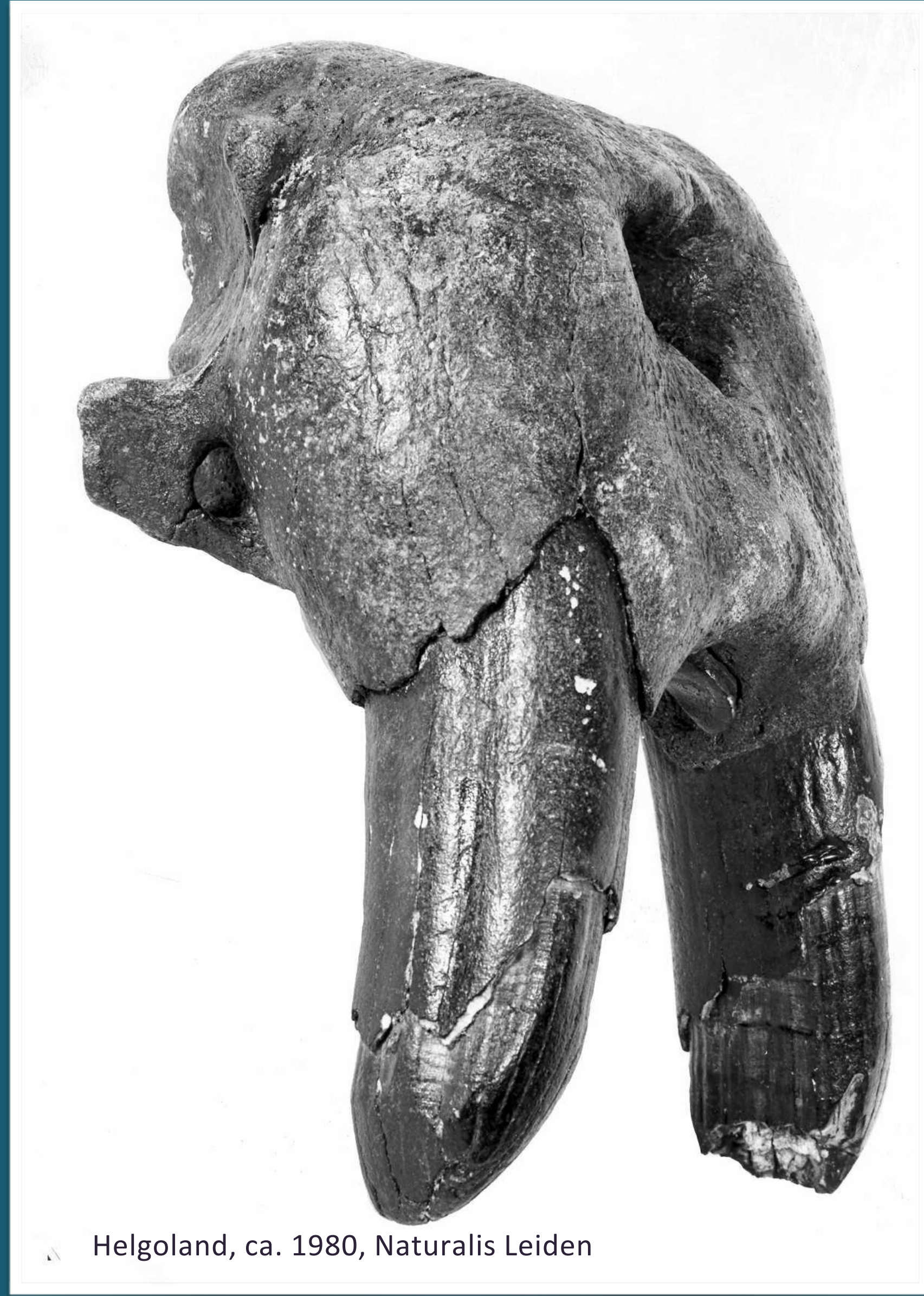
Kohno et al., 1995



Knokke Heist, 1897, KBIN Brussel



Zeeuwse kust, 1930, KZG Middelburg



Helgoland, ca. 1980, Naturalis Leiden



Scheur, ca. 2000, VM Breskens



Outer Rough, 2006, privecoll.

Collectie Het Natuurhistorisch Rotterdam

Odobenus rosmarus – 774 fossielen

Cranium (incl. fragmenten): 167

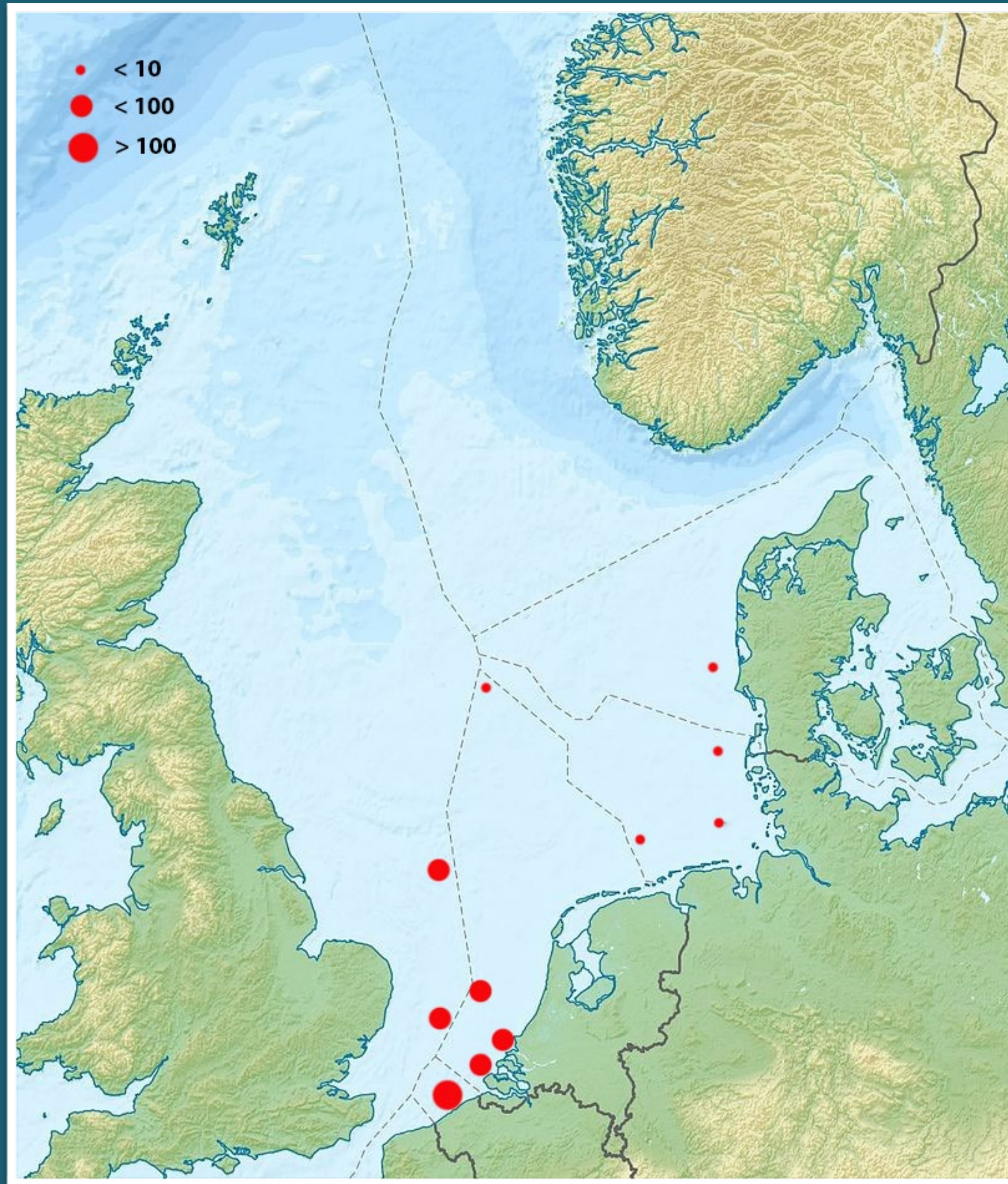
Humerus: 64

Femur: 32

Vertebra: 125







Bemonsterd skeletdeel en vindplaats	Laboratoriumnummer	Resultaat (BP)
Walrus, bekken, No 1090, Bruine Bank	UtC 3751	50000 +2800-2000
Walrus, fragment schedel, Eurogeul	GrA 22178	48500
Walrus, dijbeen, zuidelijke bocht Noordzee	GrN 28548	> 48000
Walrus, wervel, No 1062, kustwateren Helgoland	UtC 3749	47400 +2100-1600
Walrus, onderkaak, Eurogeul	GrA 59468	> 46790
Walrus, atlas NMR 40360, Holmengronden	GrA 64644	44110-42980
Walrus, schedelfragment, Denemarken (zee)	K 3726	30880 +1270-1110
Walrus, schedelfragment, Denemarken (zee)	K 3727	24380 +/- 620
Walrus, schedelfragment, Denemarken (zee)	K 4473	23500 +/- 460

- Busschers, F.S., Wesselingh, F.P., Kars, R.H., VersluijsHelder, M., Wallinga, J., Bosch, J.H.A., Timmer, J., Nierop, K.G.J., Meijer, T., Bunnik, F.P.M. & De Wolf, H., 2014. Radiocarbon dating of Late Pleistocene marine shells from the Southern North Sea. *Radiocarbon* 56 (3), pp. 1151-1166.
- Hijma, M.P., K.M. Cohen, W. Roebroeks, W.E. Westerhof & F.S. Busschers, 2012. Pleistocene Rhine-Thames landscapes: geological background for hominin occupation of the southern North Sea region. *Journal of Quaternary Science* 27, pp. 17-39.

