

MODEL

Alseamar Seaexplorer

PHYSICAL DIMENSIONS

- Length: 2 m + 1m foldable antenna
- Diameter: 25 cm
- Weight: 60 kg

- 1 — □ Nose section
- 2 — □ Scientific Payload section
- 3 — □ Battery Section
- 4 — □ Navigation
- 5 — □ Aft section
- 6 — □ Antenna

OPERATIONAL PARAMETERS

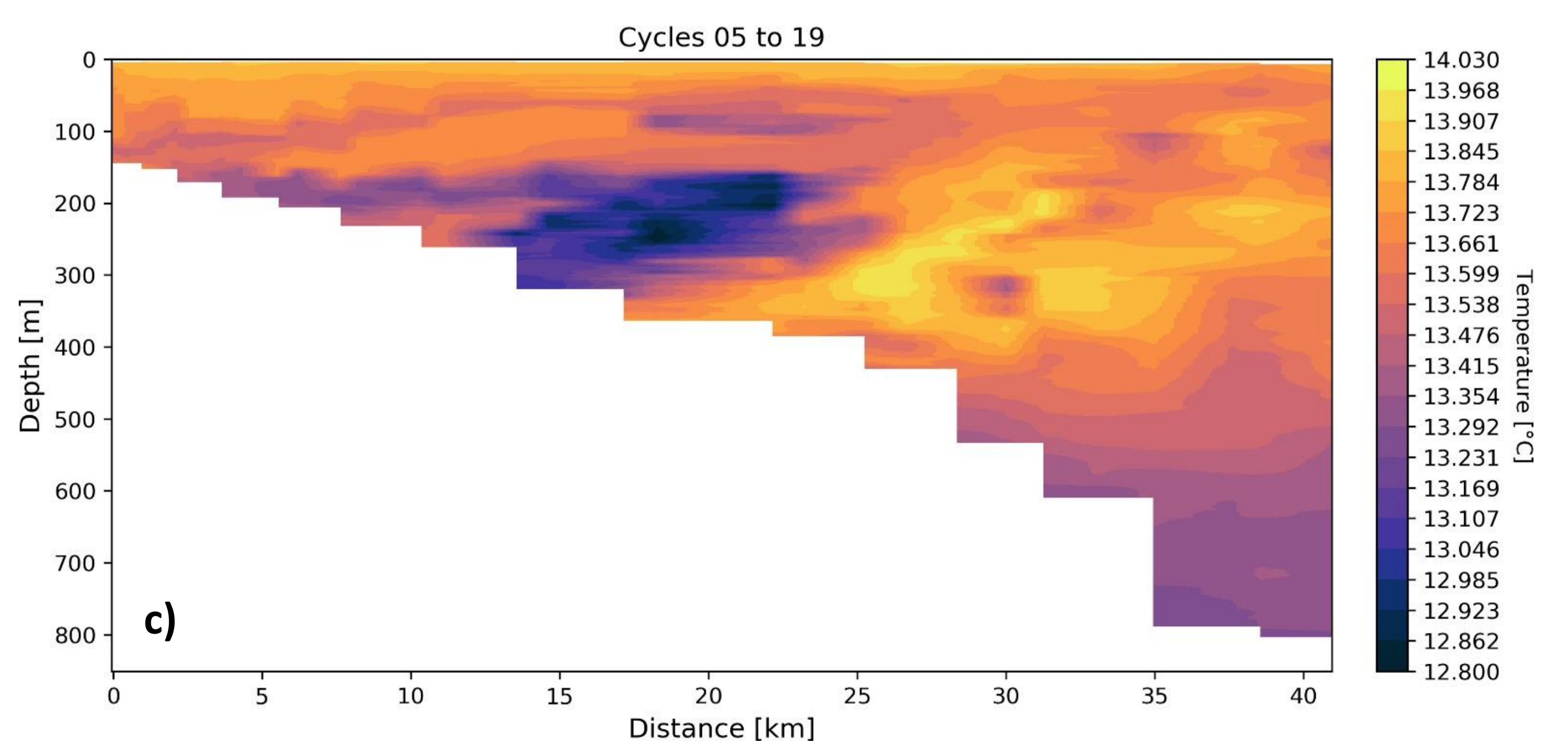
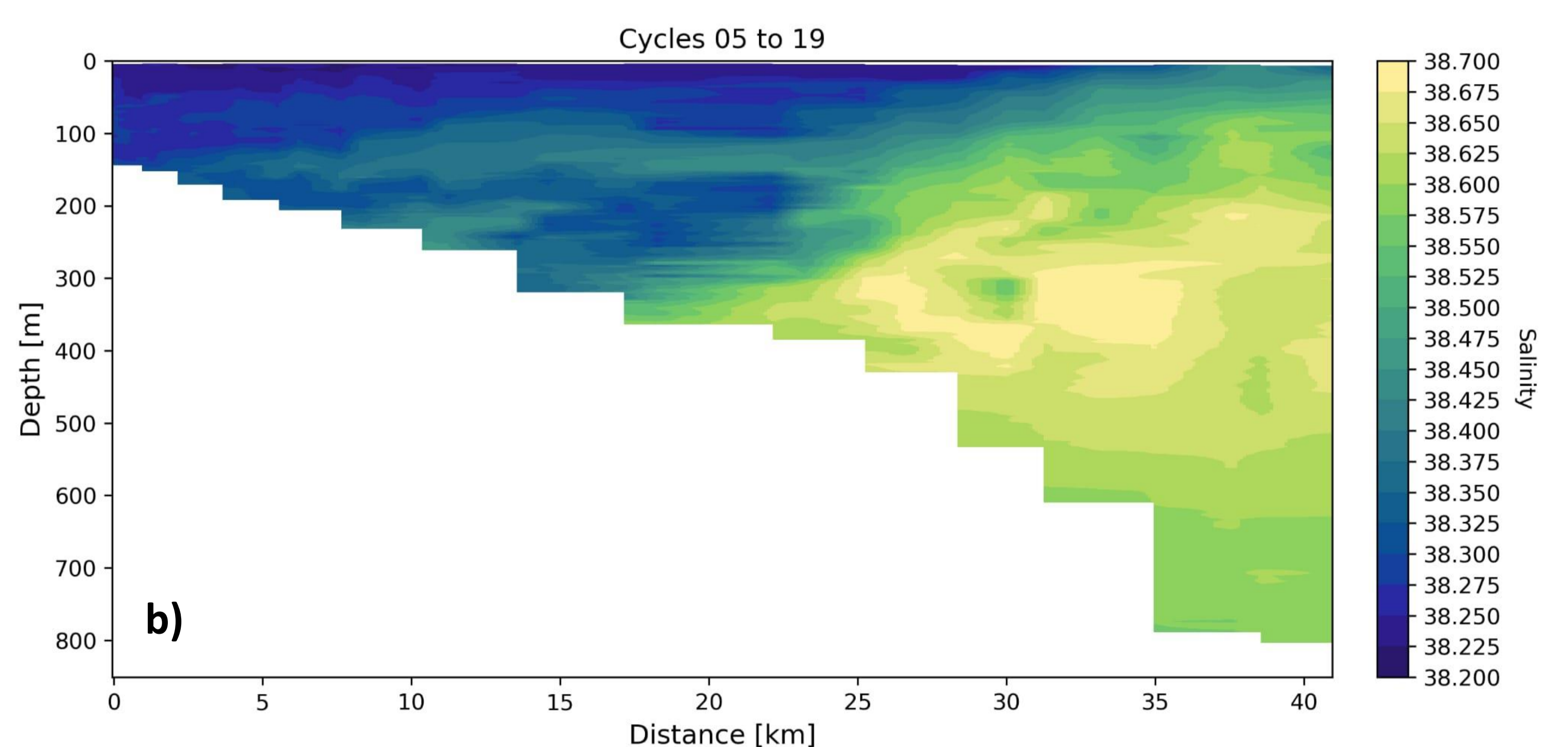
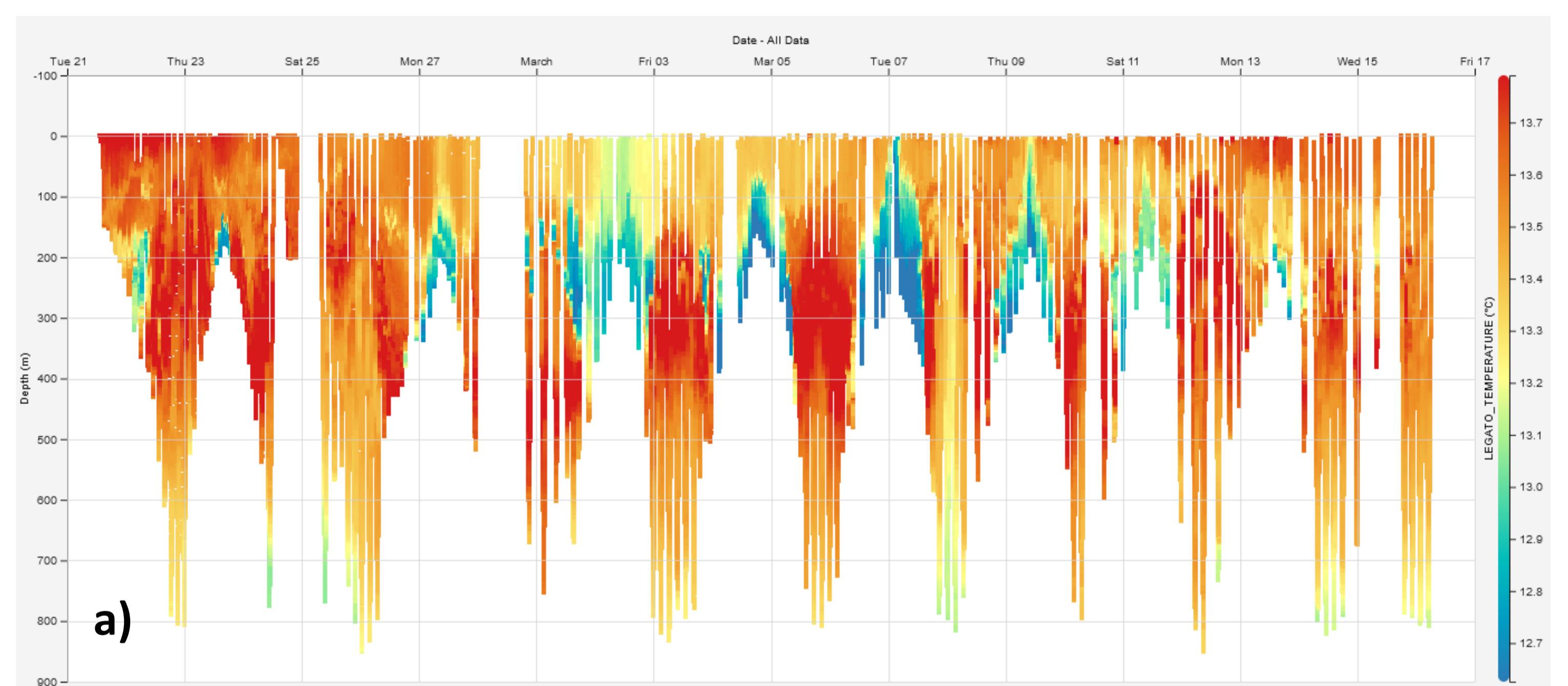
- **Depth rating:** 1000m
- **Speed:** 0.5 knots nominal
- **Endurance:** Variable - up to 64 days
Depending on sensor configuration
- **Battery:** Lithium-Ion Rechargeable
- **Charging time:** ~20 hours

COMMUNICATIONS

- Iridium
- Radio

SCIENTIFIC PAYLOAD

- **Oceanographic set-up**
 - Pressure sensor
 - CTD RBR Legato³
 - ECO Puck FLBBCD - EXP for turbidity and chlorophyll-A
 - Dissolved oxygen sensor JFE Rinko AROD-FT
 - ADCP Nortek AD2CP
- Trace metal set-up with collector cups



- a) Vertical temperature profiles from glider dives off Cape Creus, Catalan Coast;
 b) Cross-shore, vertical potential temperature transect off Cape Creus, Catalan Coast;
 c) Cross-shore, vertical salinity transect off Cape Creus, Catalan Coast.