

## SPECIFICATIONS

### MODEL

Teledyne Gavia

### PHYSICAL DIMENSIONS

- **Length:** 1.7 - 4.2 m (configuration dependent)
- **Width:** ~0.2 m
- **Weight:** ~50 - 120 kg

### OPERATIONAL PARAMETERS

- **Depth rating:** 1000 m
- **Speed:** ~5 kn
- **Endurance:** 4 - 7 h (configuration dependent)
- **GRS RTK capable**

### COMMUNICATIONS

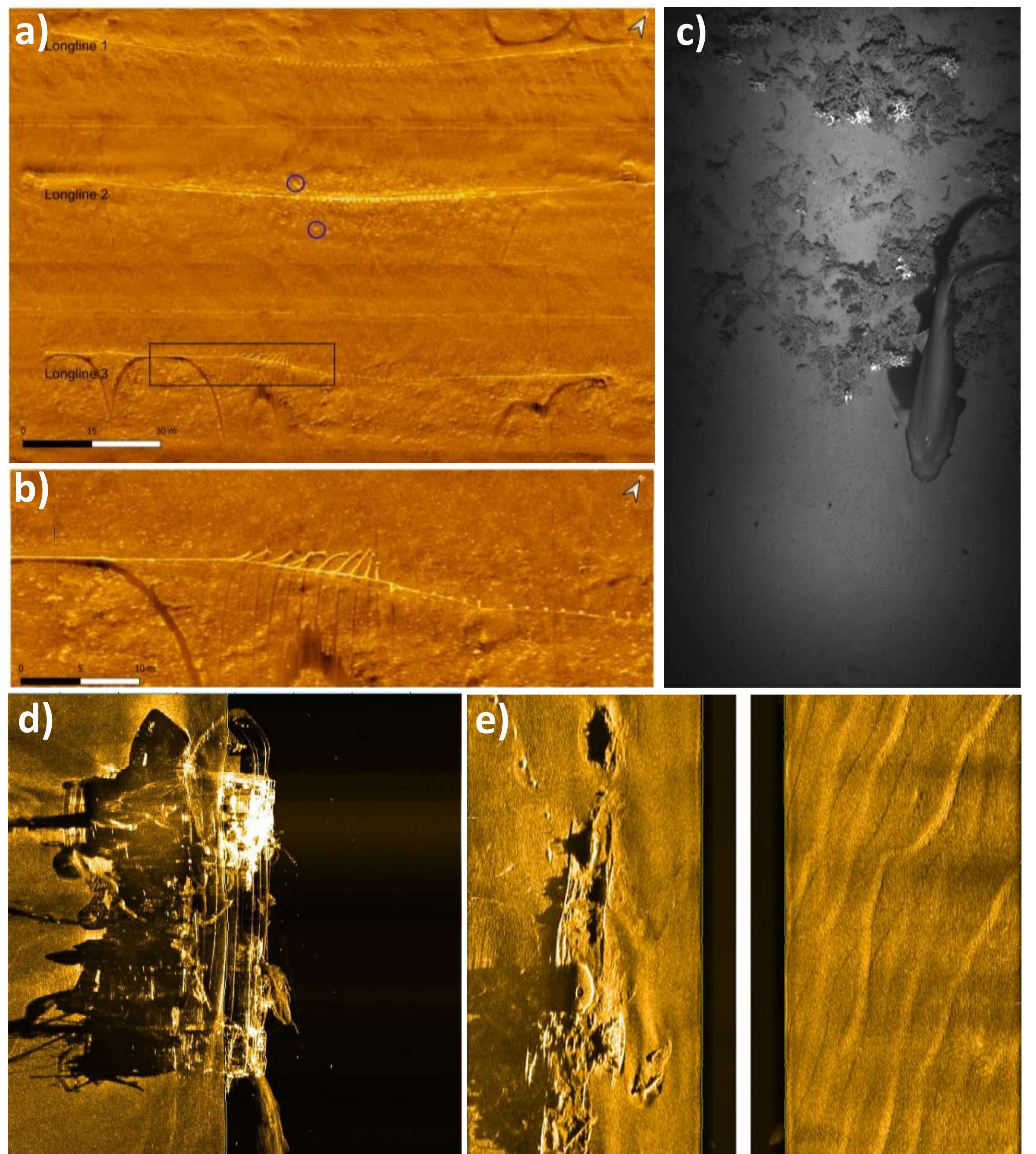
- Wi-Fi
- Benthos acoustic modem
- GAPS capable
- Iridium satellite

### SCIENTIFIC PAYLOAD

- **Side scan sonar:** Klein 3500
- **Sub-bottom profiler:** Chirp based Benthos
- **ADCP:** RDI Pathfinder DVL
- **Camera:** Grasshopper GRAS - 14S3M - C
- **Science bay module:**
  - **CTD:** RBR Legato
  - **Chlorophyll A, turbidity, organic matter:** Wetlabs Ecopuck
  - **Oxygen sensor:** Aanderaa 4831
  - **PCo2 sensor:** Pro Oceanus Mini
  - **Nitrate sensor:** Satlantic Suna
  - **USBL:** GAPS Transponder

## SCIENTIFIC PAYLOAD

- 1 □ Recovery Nosecone module
- 2 □ Battery module
- 3 □ Inertial Navigation System module
- 4 □ Control and Communications module (Control Center)
- 5 □ Sub-Bottom Profiler module - Chirp Based Benthos
- 6 □ Environmental module (Science Bay Module)
- 7 □ Klein Bathy module
- 8 □ Propulsion and Actuator module



(a) Side Scan Sonar mosaic of a mussel aquaculture setup showing three mussel longlines. Potential mussels on the seafloor are highlighted by circles. (b) Mussel dropper lines resting on the seabed. (c) Deep-water shark captured by the camera. (d) High-resolution Side Scan Imagery of the shipwreck FV Piedras off Ireland coast. Shadow to the left reveals the shape of the hull. (e) High-resolution Side Scan Imagery of the shipwreck HMS Waverley in the Belgian Part of the North Sea.