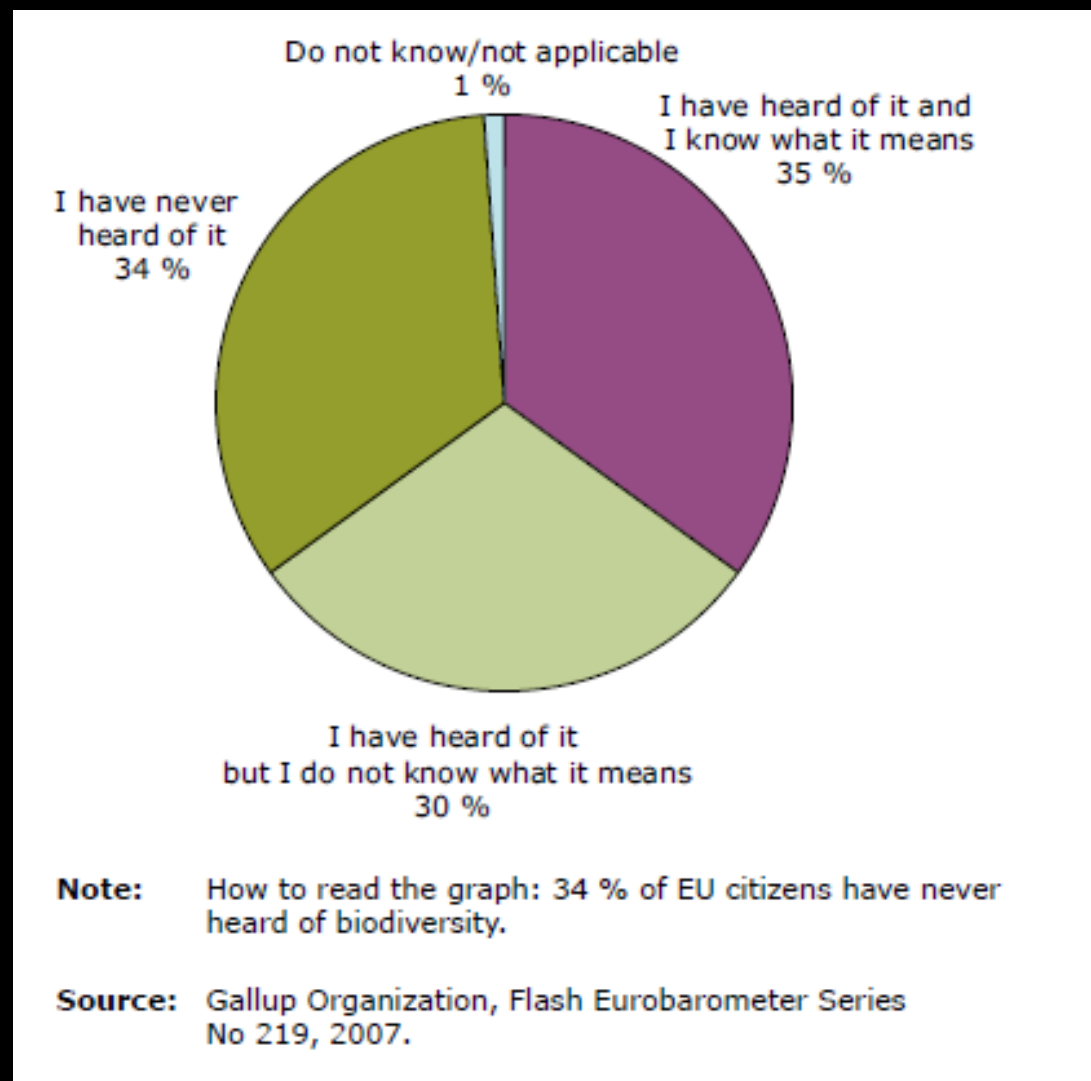


The EEA and its work in interfacing knowledge provision and decision making

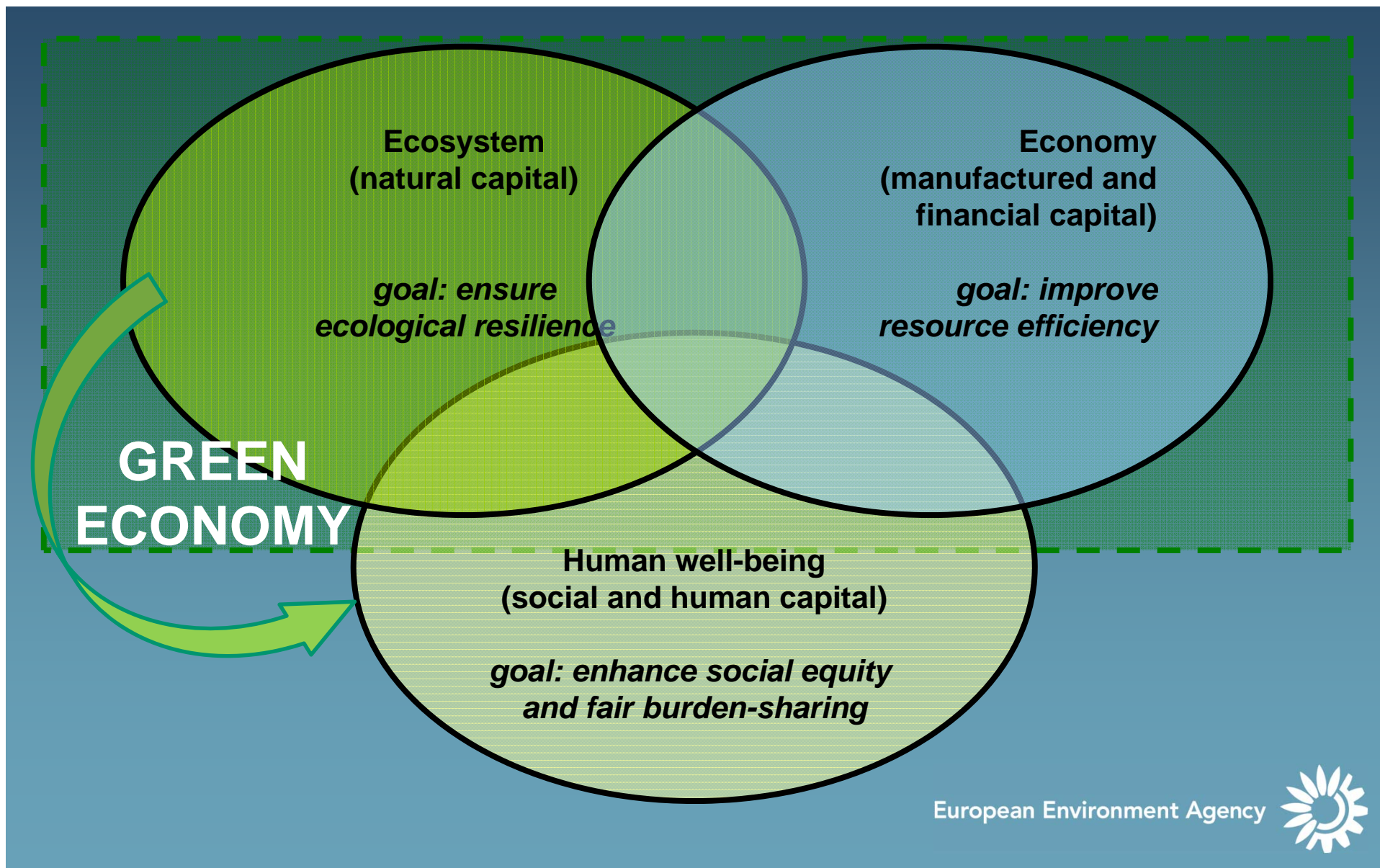
Jacqueline McGlade
European Environment Agency



Familiarity with the term 'biodiversity' in EU27



The green economy includes a focus on ecosystem resilience and human well-being





EEA and neighbouring countries



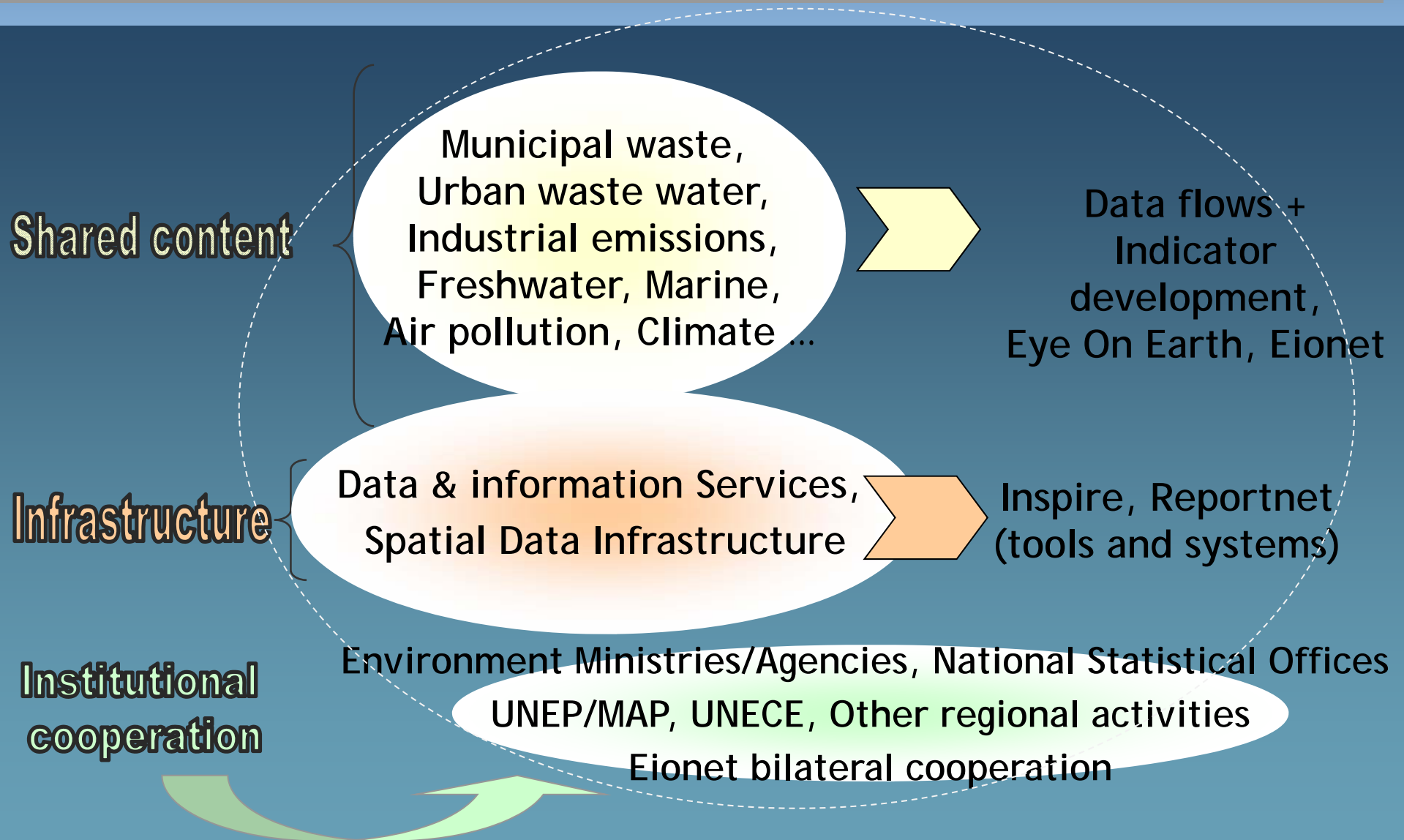
EEA and ENPI-SEIS project coverage

- | | |
|---------------------------|-----------------------|
| EEA member countries | ENP South |
| EEA cooperating countries | ENP East |
| | Strategic partnership |

The map does not imply any opinion from EEA concerning the legal status of any country or territory, its area of authority or the delineation of its frontiers and boundaries.



Applying SEIS Framework with EU Neighbours

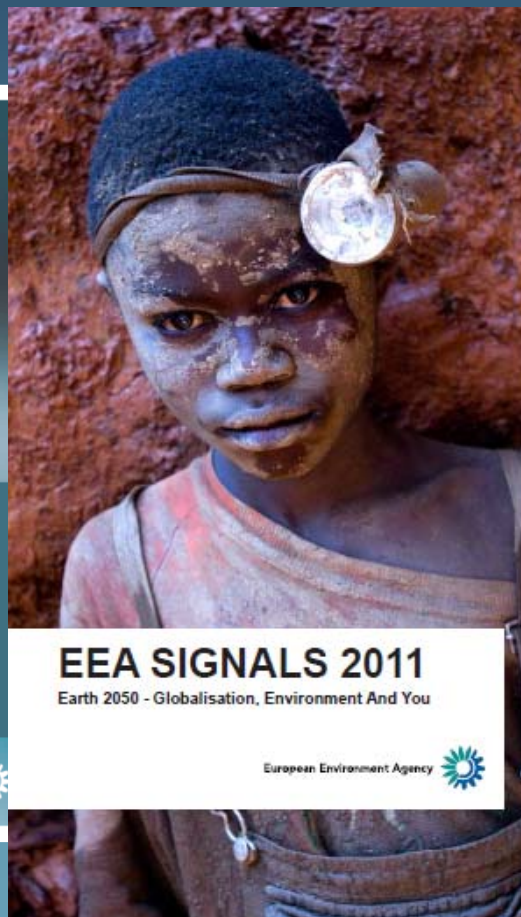


EEA studies show: systemic challenges, systemic solutions

THE EUROPEAN ENVIRONMENT

STATE AND OUTLOOK 2010
SYNTHESIS

European Environment Agency 




EEA SIGNALS 2011

Earth 2050 - Globalisation, Environment And You

European Environment Agency 

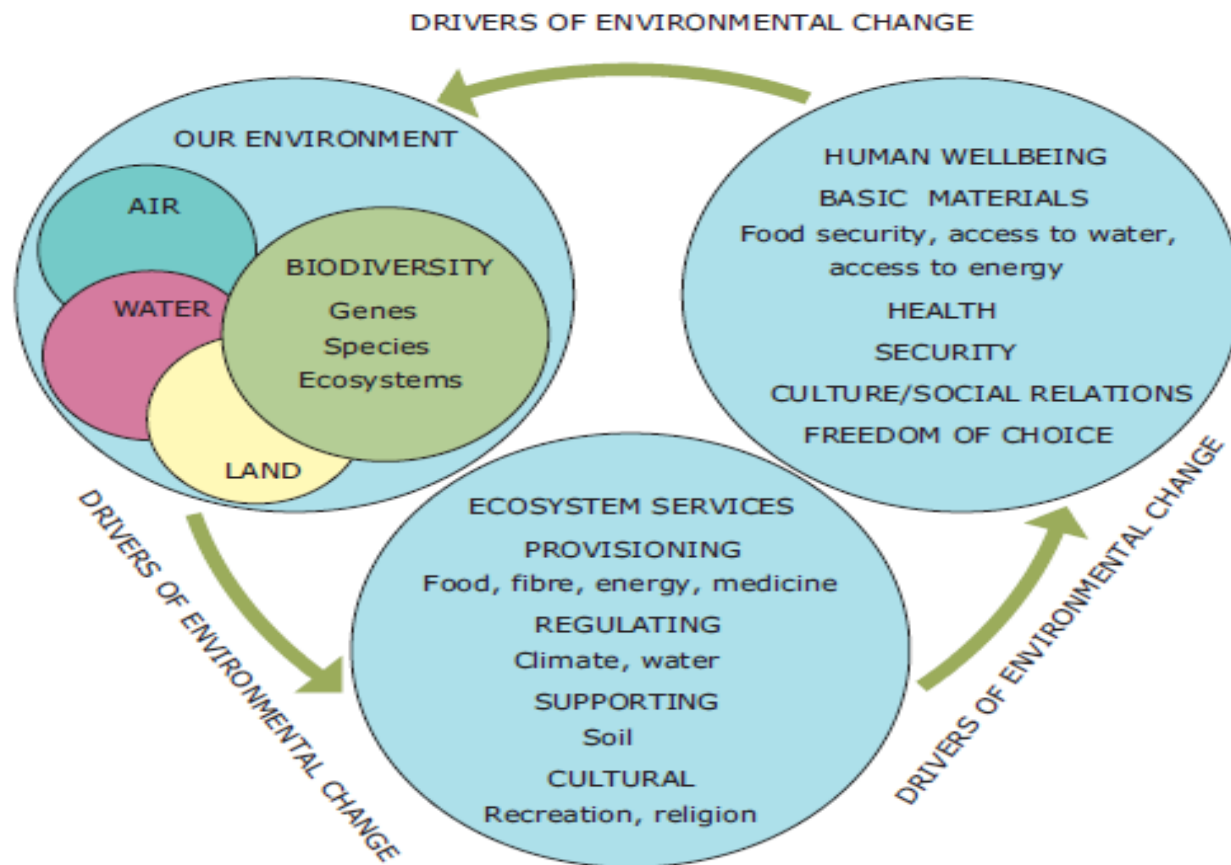
Europe's environment

An Assessment of Assessments

European Environment Agency 

European Environment Agency





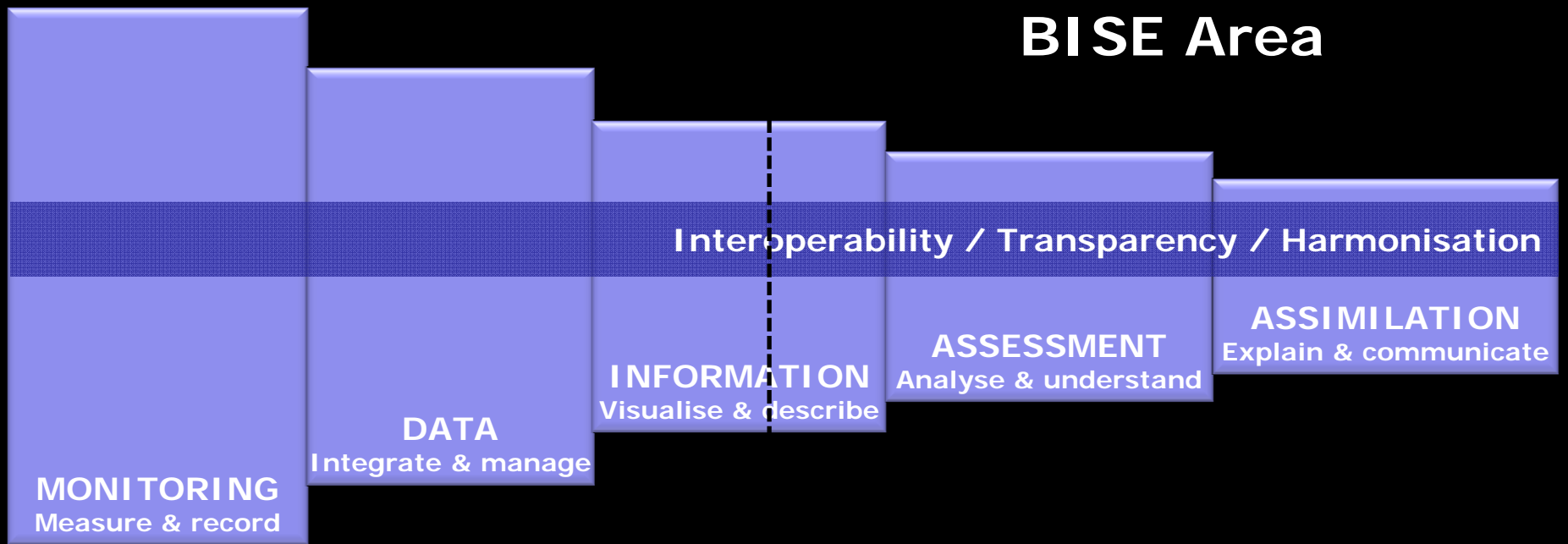
AGENTS OF CHANGE

Demography	Politics/institutions	Economy	Socio-cultural
Urbanisation	Security and conflict	Markets and finance	New paradigms
Aging populations	International environmental governance	Emerging economies	Ethics
Role of gender		Valuation of biodiversity	Spirituality

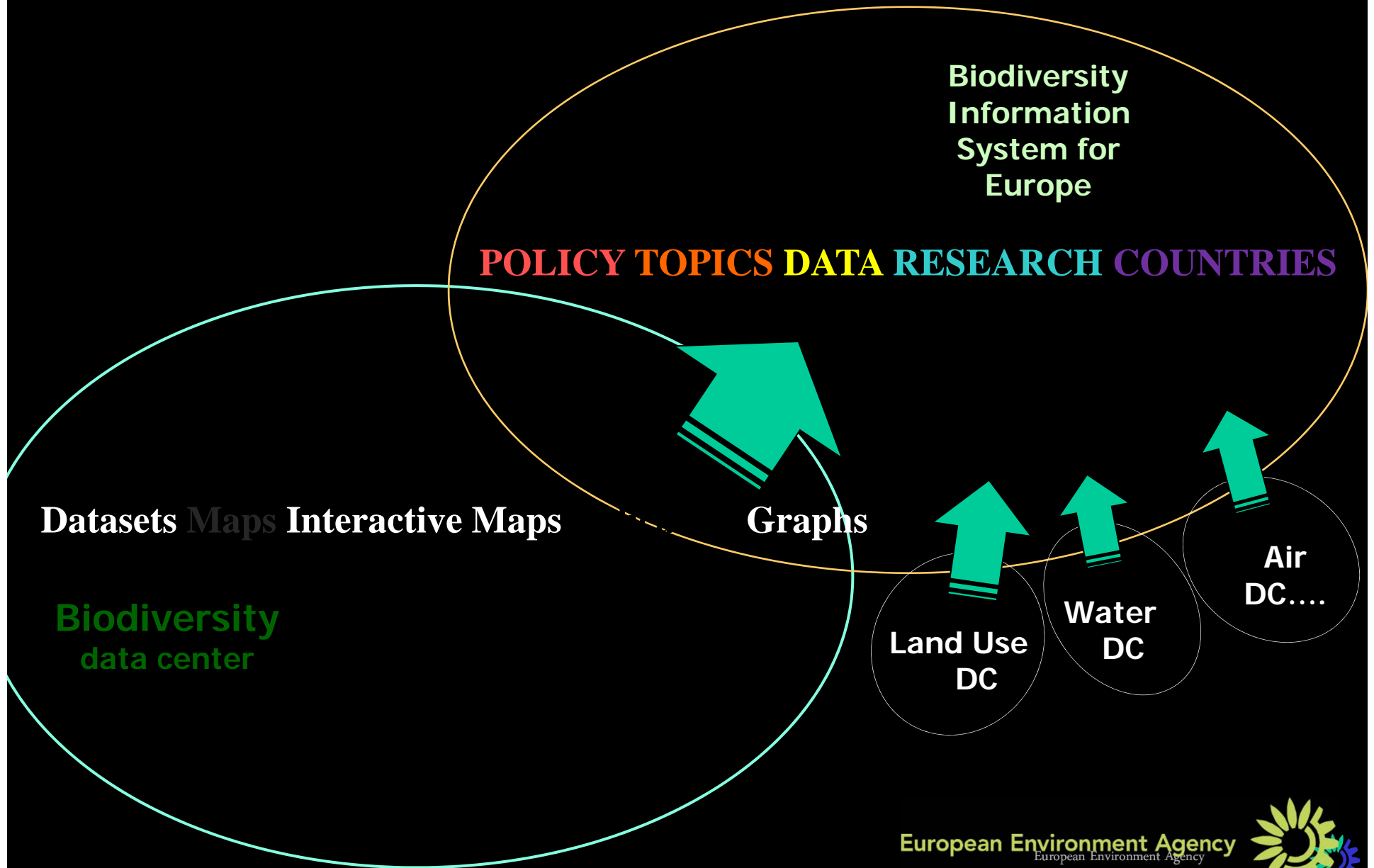
Source: McNeely and Mainka, 2009.



Building a biodiversity knowledge base for Europe



BISE Environmental Data Centres → BDC





EYE ON EARTH

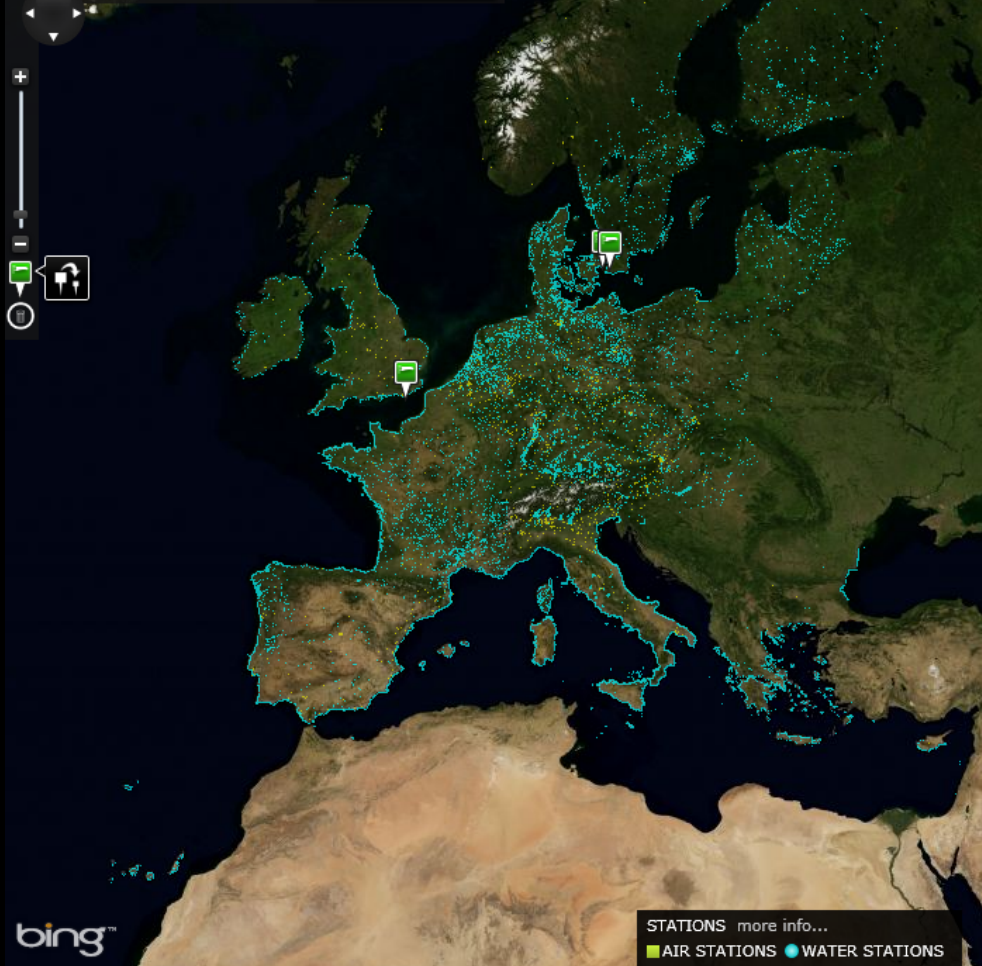
enter location



European Environment Agency



Road Aerial Labels Views



my location sms about help

lock

MALMÖ, SWEDEN

Change Location

OUR RATING
1
VERY GOOD

YOUR RATING
GOOD



Irritating Dirty Clean
Non-irritating
Odourless Clear
Non-clear Smelly

1 Rating

AIR WATCH

OUR RATING
1
GOOD

YOUR RATING
VERY GOOD

nearest station
Barometergatan, Malmö,
Sweden

Crowded Polluted Equipped Safe
Clean Scenic Dirty Unsafe

1 Rating

WATER WATCH

SMS

more info...

AIR [location name] OR WATER [location name]

+44 7786 201 106

EEA HEADLINES

EEA kicks off public activities in the run-up to COP15

On the occasion of Copenhagen Culture Night, the European En... [COP15]

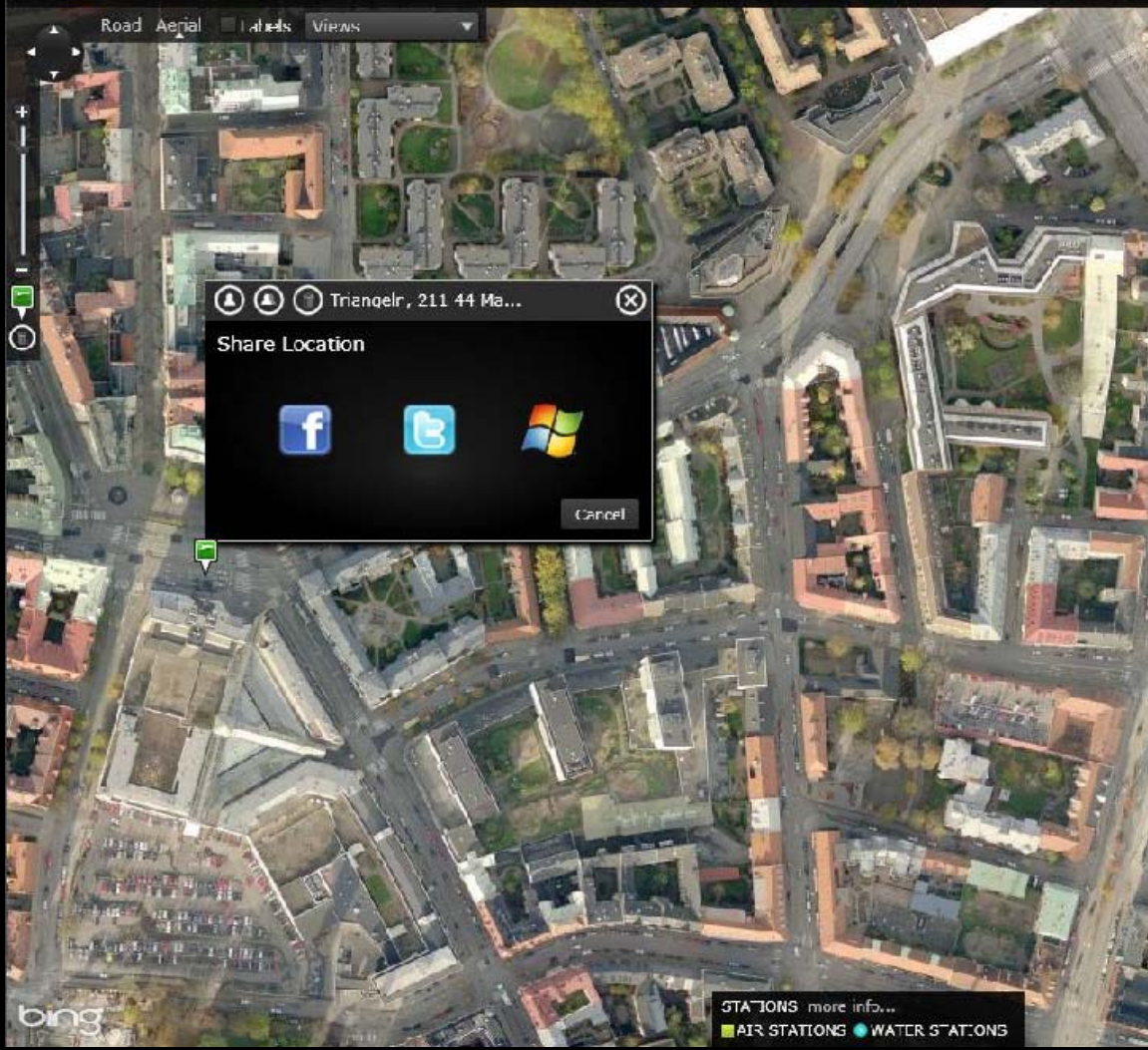
EU set to miss 2010 air pollutant limits

With 2010 now quickly approaching, updated emission estimate... kilometers

EEA joins forces with European Water Partnership



EYE ON EARTH



my location sms about help lock

MALMÖ, SWEDEN Change Location

OUR RATING
1
VERY GOOD

YOUR RATING
GOOD



Non-irritating
Odourless Clear
Non-clear Smelly
1 Rating

AIR WATCH

OUR RATING
1
GOOD

YOUR RATING
VERY GOOD


nearby stations
Kammargatan, Malmö, Sweden

Quoted Polluted **Employed Safe**
Clear Safe **Dirty Unsafe**

WATER WATCH

SMS more info...

AIR [location name] OR **WATER** [location name]

 **+44 7786 201 106**

EEA HEADLINES

EEA kicks off public activities in the run-up to COP15
On the occasion of Copenhagen Culture Night, the European Env... [COP15]

EU set to miss 2010 air pollutant limits
With 2010 now quickly approaching, updated emission estimate...

EEA joins forces with European Water Partnership
The European Environment Agency and the European Water Partn...

Best way to get around: bicycle, car or on foot?
Every day, millions of Europeans make short trips to work, s...





Environmental Atlas Of Europe



The Environmental Atlas of Europe is a UNEP-EEA-European Space Agency joint project showcasing communities responding to environmental change across Europe.

[credits](#) | [disclaimer](#)

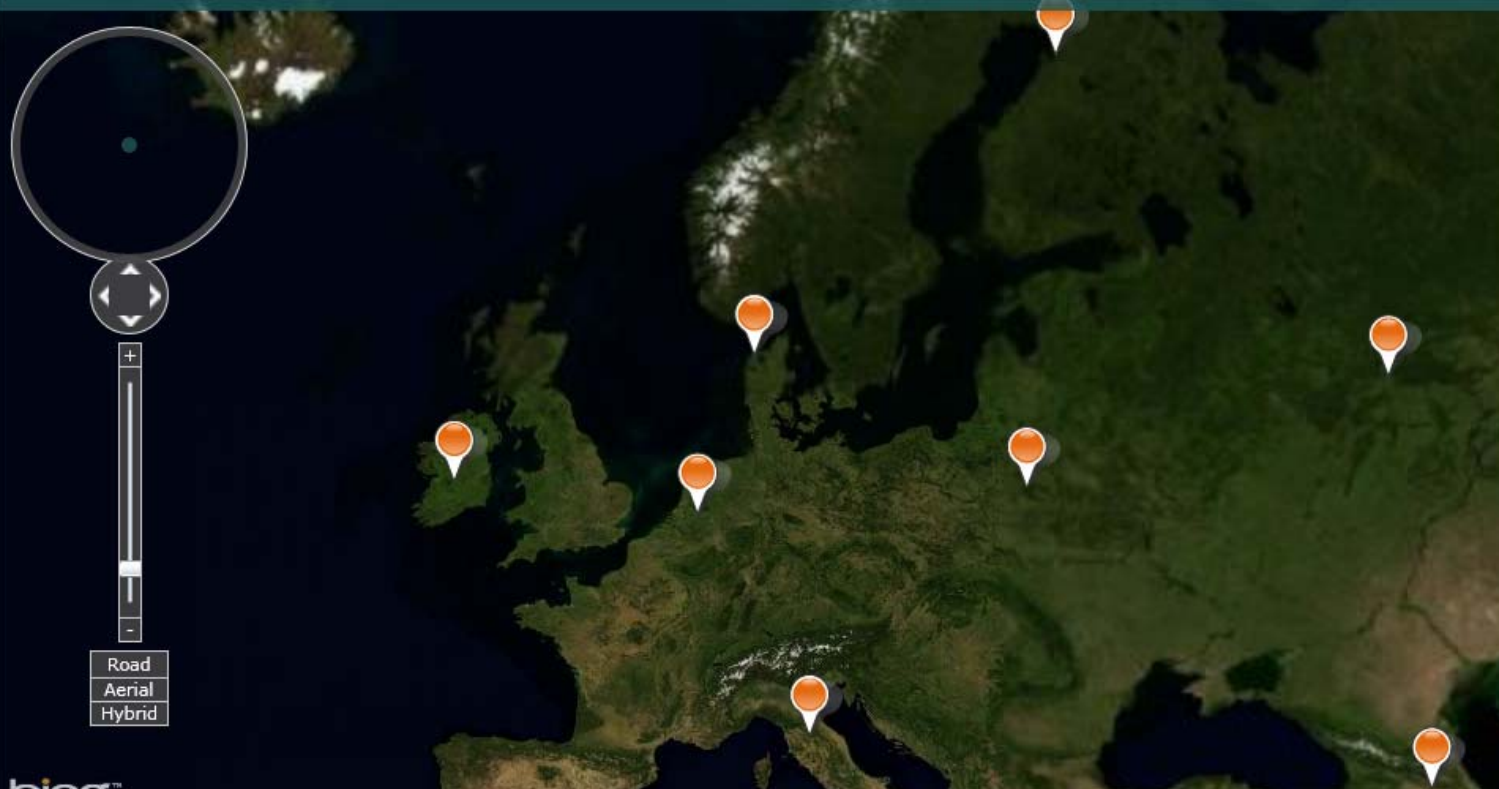
Environmental Atlas of Europe



United Nations Environment Programme



European Environment Agency



Stories Share Settings

Denmark



Baltic



Poland



1000 Kilometers





Illustration of the Common Information Sharing Environment (CISE)





Bilde: Olav Rune Godø
(Havforskningsinstituttet)



A two-way communication platform on the environment which brings together environmental data and scientific information with feedback and observations of millions of ordinary people.

VIEW NOW



Eye On Earth Featured Items



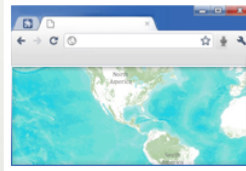
Social Media and Illinois



Twitter Feed for Environment



Bing Maps - Roads



Eye on Earth App

Eye on Earth

Eye on Earth is a two-way communication network on the environment which brings together scientific information with the feedback and observations of millions of people. It is the result of a partnership between Esri, Microsoft, and the European Environmental Agency (EEA). Currently, it includes information on the water quality for more than 22,000 bathing sites throughout Europe. EyeOnEarth also includes information on air quality for more than 1000 air quality monitoring stations throughout Europe. Additionally, an air quality model enables viewing of the air pollution situation in between the air quality monitoring stations. For water sites, the portal presents historical data over several years and for some, the latest 2009 data is also available.

Make a Map »

Create a map that can be viewed in a browser, desktop or mobile device. Share it on a blog, via email, or embed it in a website.

Start ArcGIS Explorer Online »

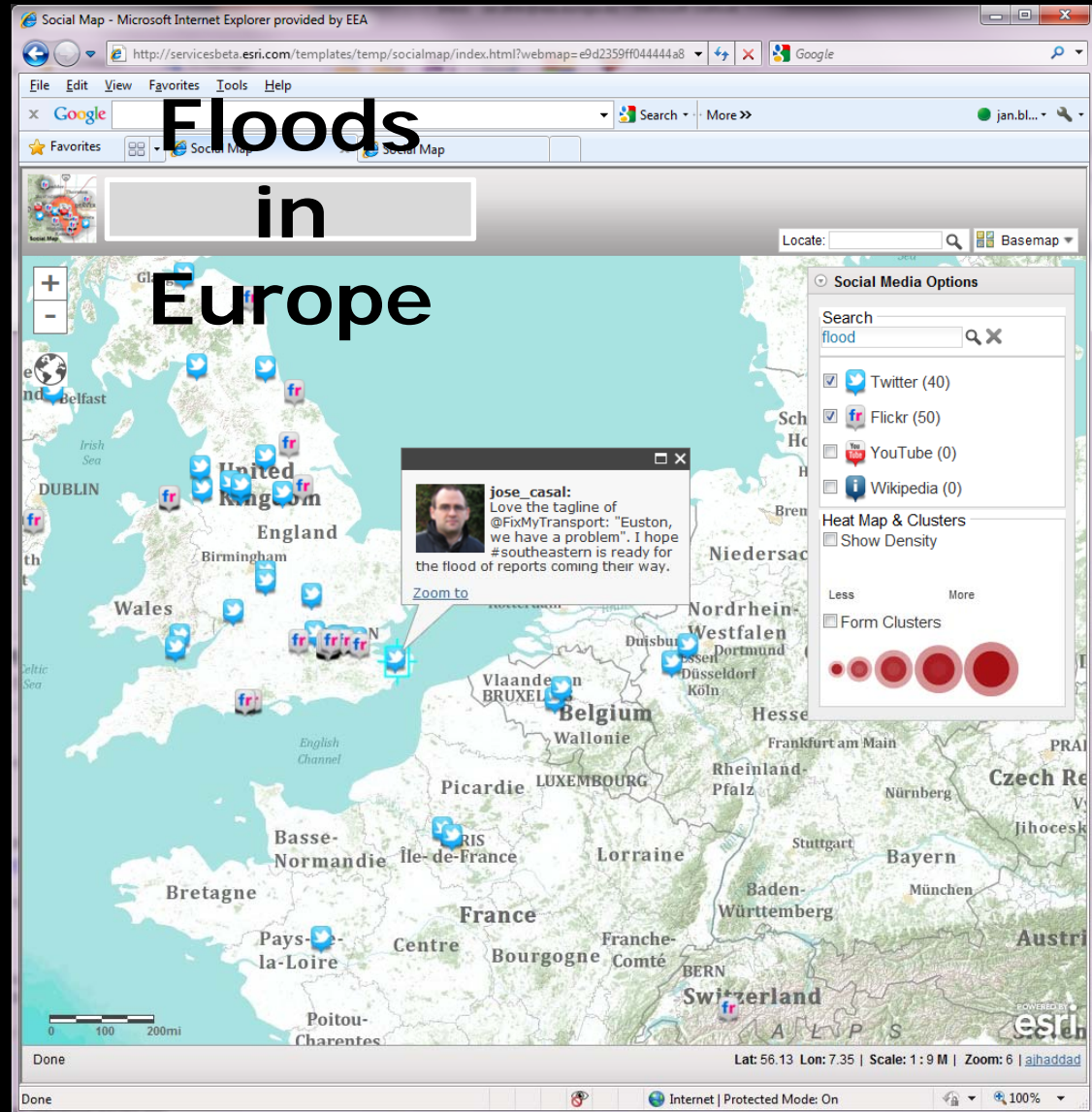
Use this rich application for transforming your data into beautiful maps and presentations that tell powerful stories.

The Eye on Earth website



Social media integration

Floods in Twitter and Flickr





Thanks for your attention!

Jacqueline McGlade
European Environment Agency

