

Report training sessions RV Mtafiti at KMFRI from 20-27 January 2014

Monday 20 January 2014:

- Presentation VLIZ-KMFRI collaboration
 - Presenting website www.vliz.be/projects/kenya
 - Presenting Outreach Product for RV Mtafiti – post card
- Collaborative research funding opportunities (Delphine Vanhaecke)
- Introduction to training sessions
 - Scientific equipment on board
 - Scientific cruise planning
- Preparing all materials needed for sailing
- Meeting with captain Phillip Mulumba for scientific cruise planning

Tuesday 21 January 2014:

- Meeting with data centre of KMFRI
- Demonstrations on use and maintenance of scientific equipment on board
- Scientific cruise planning and management
 - Example from FISHCONNECT
 - Example microplastics
- Discussion on possible research activities deploying RV Mtafiti for KMFRI
- Advising on possible demonstrations for the president on the day of commissioning
- Dinner meeting with Director of KMFRI and Captain of RV Mtafiti

Wednesday - Thursday 22-23 January 2014:

- Demonstrations on board of RV Mtafiti:
 1. Tour on the ship by Kenyan navy crew
 2. Demonstration of sampling equipment on board
 3. Sampling at two locations in the harbor of Mombasa:

- Sediment samples: core samples for pollution research, grain size distribution analysis, benthos research and microplastics analysis
- Water samples for nutrient analyses and microplastics research
- CTD and thermosalinograph measurements

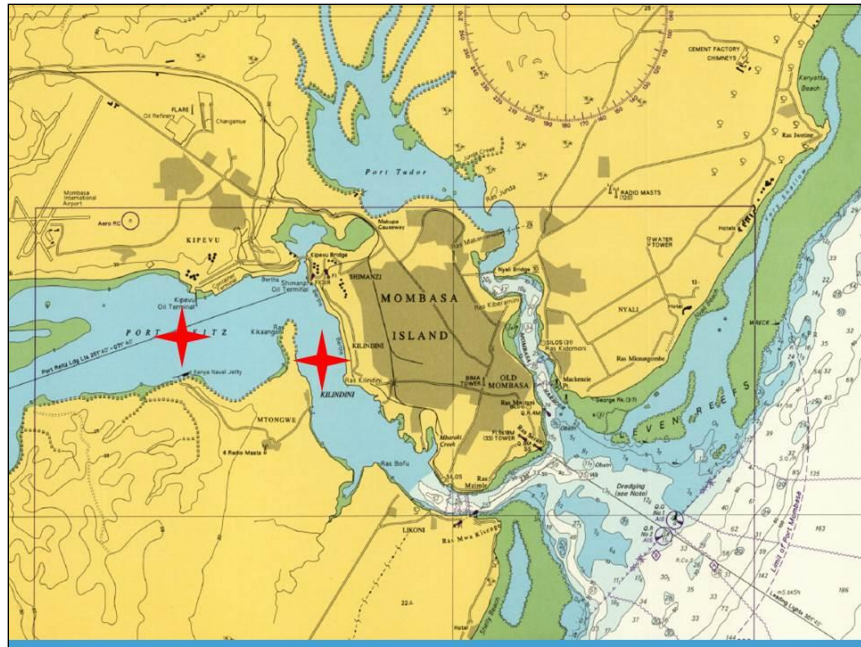


Figure 1. Sampling locations 1 (left) and 2 (right).

Friday 24 January 2014

- Underway data processing - CTD and thermosalinograph data
- Rehearsals of demonstrations on board of Mtafiti

Monday 27 January 2014

- Commissioning of RV Mtafiti by the president of Kenya