

**Zooplankton**

**Sheet 72**

**CUMACEA**

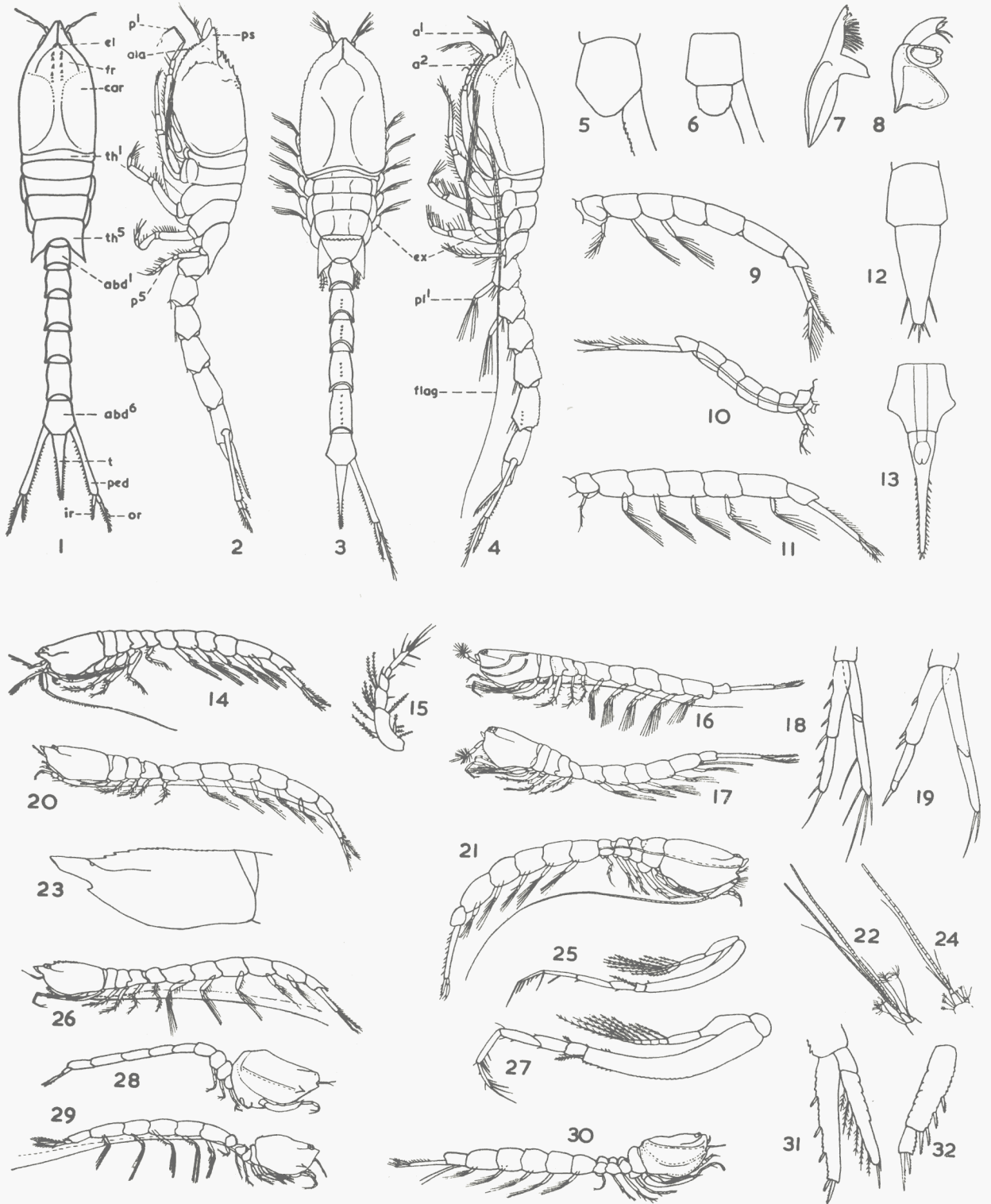
**Figures**

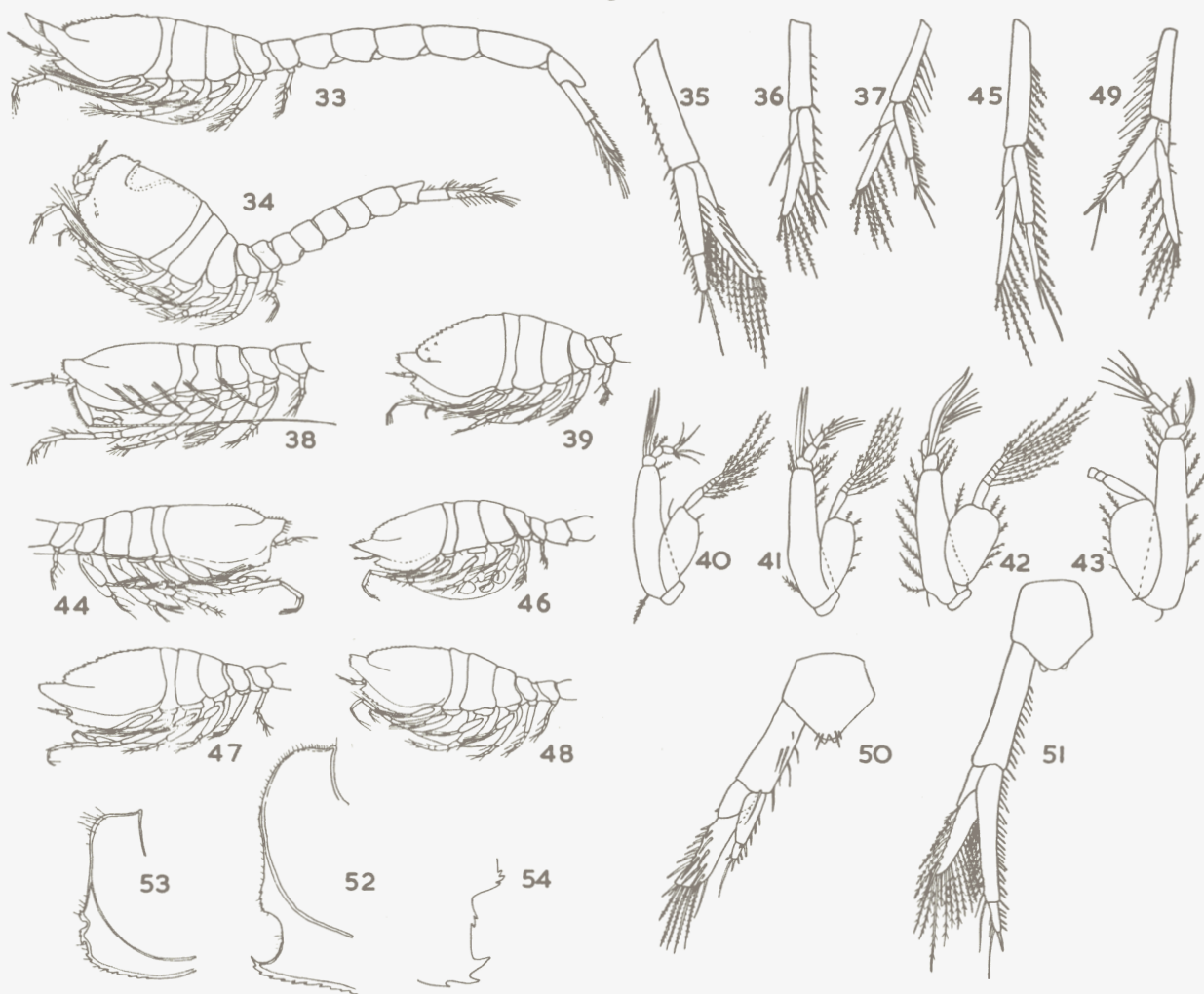
(covering Sheets 71 and 73-76)

(By N. S. Jones)

**1957**

Figures are after various authors and are to different scales.





Figs. 1—4, *Diastylis rathkei*: 1, ♀ dorsally; 2, ♀ laterally; 3, ♂ dorsally; 4, ♂ laterally. a<sup>1</sup>, first antenna (antennula); a<sup>2</sup>, second antenna (antenna); abd<sup>1</sup>, abd<sup>6</sup>, first and sixth abdominal somites; ala, anterolateral angle; car, carapace; el, eyelobe; ex, thoracic exopodites; flag, flagellum of second antenna; fr, frontal lobe; ped, peduncle of uropod; ir, or, inner and outer ramus of uropod; p<sup>1</sup>, p<sup>5</sup>, first and fifth pereopods; pl<sup>1</sup>, first pleopod; ps, pseudorostrum; t, telson; th<sup>1</sup>, th<sup>5</sup>, first and fifth thoracic somites.

Fig. 5, *Bodotria arenosa*: sixth abdominal somite dorsally.

Fig. 6, *Pseudocuma longicornis*: sixth abdominal somite and telson dorsally.

Fig. 7, *Bodotria arenosa*: mandible.

Fig. 8, *Leucon nasica*: mandible.

Fig. 9, *Leucon nasica*: ♂ abdomen laterally.

Fig. 10, *Campylaspis rubicunda*: ♂ abdomen laterally.

Fig. 11, *Bodotria scorpioides*: ♂ abdomen laterally.

Fig. 12, *Lamprops fasciata*: ♀ telson dorsally.

Fig. 13, *Diastylis rathkei*: ♀ telson dorsally.

Fig. 14, *Vaunthompsonia cristata*: ♂ laterally.

Figs. 15—16, *Cumopsis goodsiri*: 15, ♀ second pereopod; 16, ♂ laterally.

Figs. 17—18, *Cumopsis longipes*: 17, ♂ laterally; 18 ♀ uropod dorsally.

Fig. 19, *Cumopsis fagei*: ♀ uropod dorsally.

Fig. 20, *Iphinoe trispinosa*: ♂ laterally.

Fig. 21, *Bodotria arenosa*: ♂ laterally.

Figs. 22—23, *Iphinoe serrata*: 22, ♂ end of first antenna; 23, ♀ carapace laterally.

Figs. 24—26, *Iphinoe tenella*: 24, ♀ end of first antenna; 25, ♀ first pereopod; 26, ♂ laterally.

Fig. 27, *Iphinoe trispinosa*: ♀ first pereopod.

Fig. 28, *Eocuma dollfusi*: ♀ laterally.

Fig. 29, *Eocuma ferox*: ♂ laterally.

Fig. 30, *Bodotria pulchella*: ♂ laterally.

Fig. 31, *Bodotria arenosa*: ♀ rami of uropod dorsally.

Fig. 32, *Bodotria scorpioides*: ♀ inner ramus of uropod dorsally.

Fig. 33, *Leucon nasica*: ♀ laterally.

Fig. 34, *Eudorellopsis deformis*: ♀ laterally.

Fig. 35, *Leucon nasica*: ♀ uropod dorsally.

Figs. 36—37, *Leucon acutirostris*: 36, ♀ uropod dorsally; 37, ♂ uropod dorsally.

Fig. 38, *Leucon nasica*: ♂ carapace and thorax laterally.

Fig. 39, *Leucon nasicoides*: ♀ carapace and thorax laterally.

Fig. 40, *Leucon acutirostris*: ♂ third pereopod.

Fig. 41, *Leucon nasicoides*: ♂ third pereopod.

Fig. 42, *Leucon nasica*: ♂ third pereopod.

Fig. 43, *Leucon fulvus*: ♂ third pereopod.

Fig. 44, *Leucon acutirostris*: ♂ laterally.

Fig. 45, *Leucon fulvus*: ♂ uropod dorsally.

Fig. 46, *Leucon acutirostris*: ♀ laterally.

Fig. 47, *Leucon pallidus*: ♀ laterally.

Fig. 48, *Leucon fulvus*: ♀ laterally.

Fig. 49, *Leucon pallidus*: ♂ uropod dorsally.

Fig. 50, *Eudorellopsis deformis*: ♀ telson and uropod dorsally.

Figs. 51—52, *Eudorella emarginata*: 51, ♀ telson and uropod dorsally; 52, ♀ front of carapace laterally.

Fig. 53, *Eudorella truncatula*: ♀ front of carapace laterally.

Fig. 54, *Eudorella spitzbergensis*: ♀ front of carapace laterally.

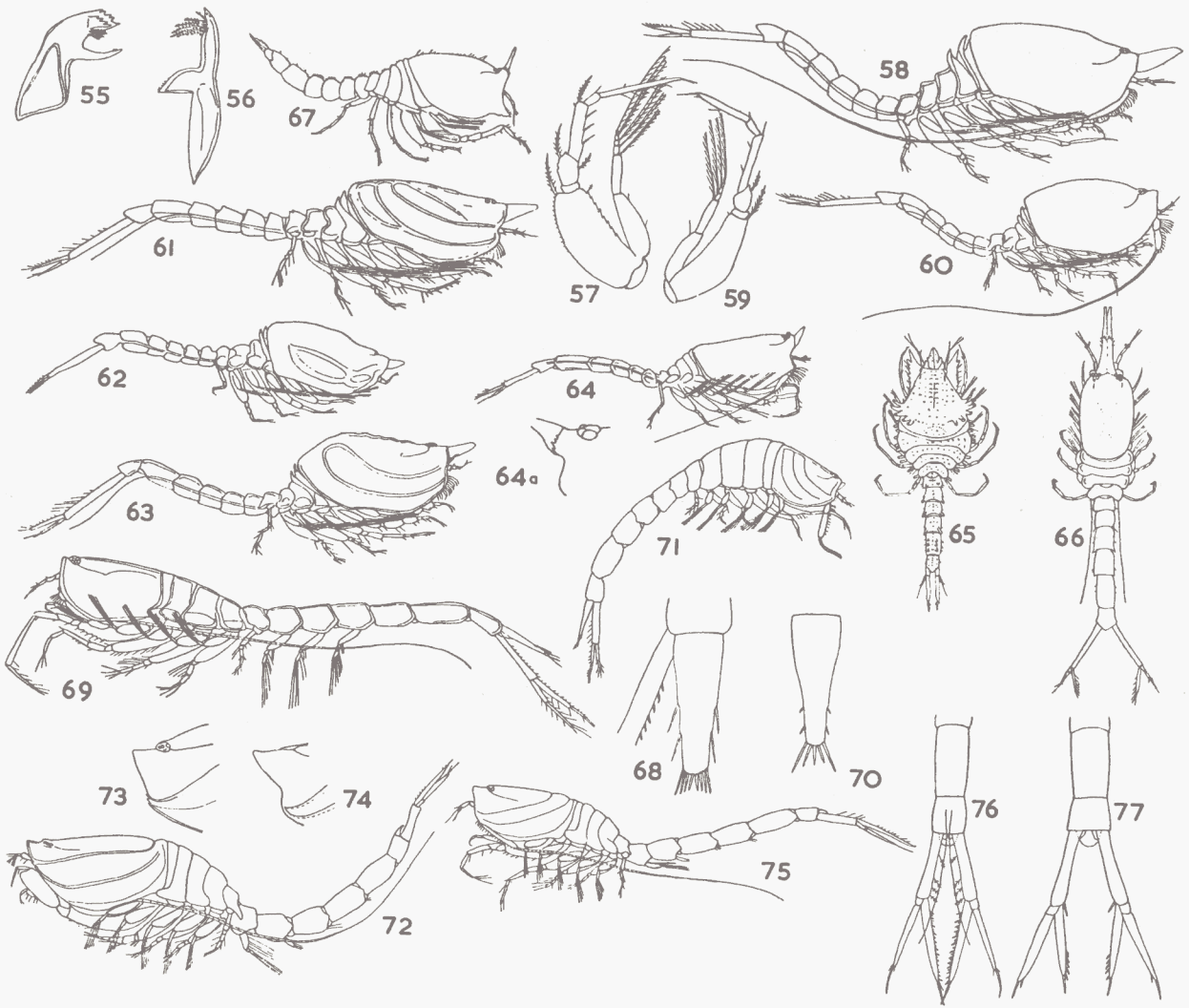
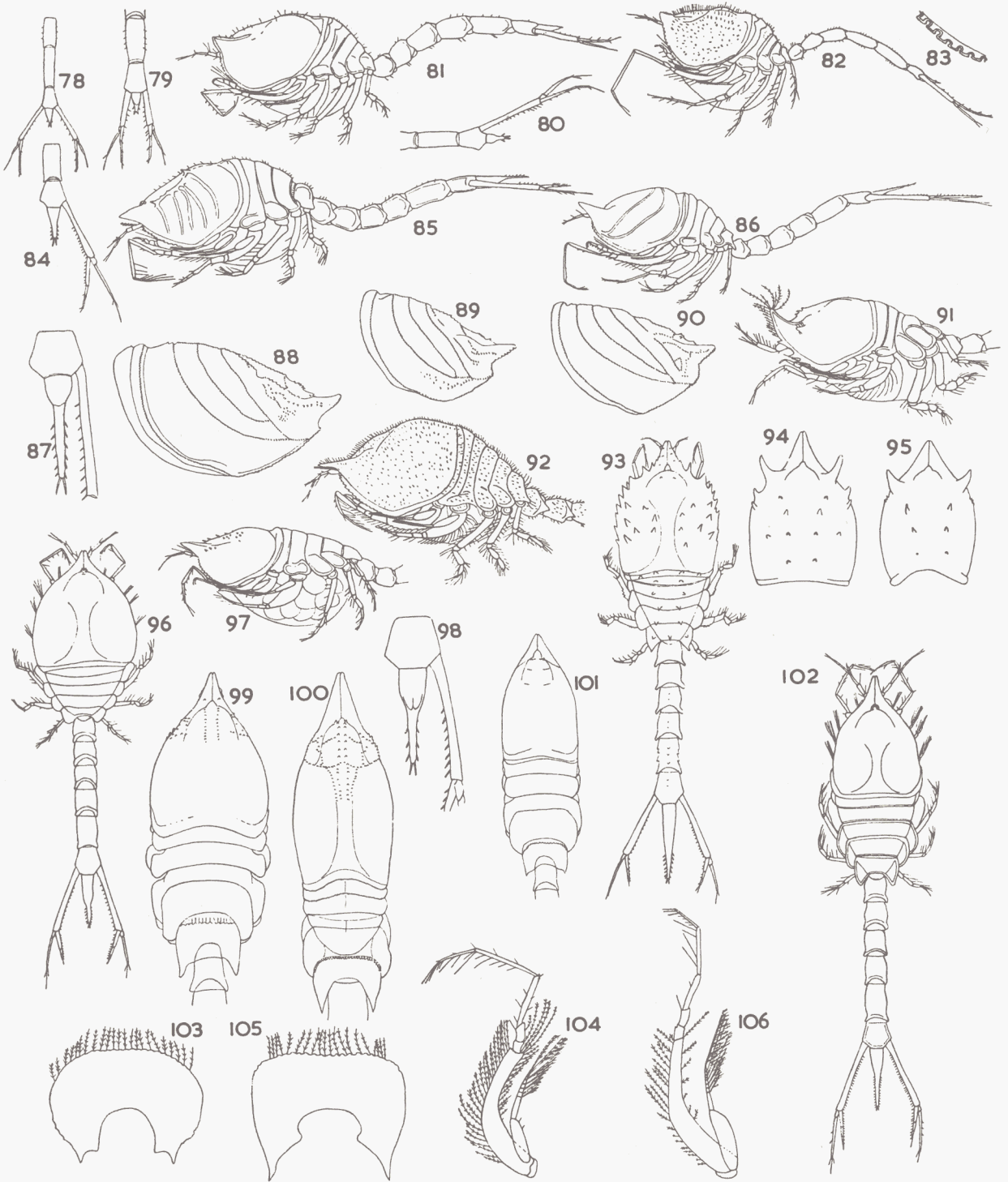


Fig. 55, *Campylaspis rubicunda*: mandible.  
Fig. 56, *Cumella pygmaea*: mandible.  
Figs. 57—58, *Campylaspis rubicunda*: 57, ♀ second peraeopod; 58, ♂ laterally.  
Figs. 59—60, *Campylaspis glabra*: 59, ♀ second peraeopod; 60, ♂ laterally.  
Fig. 61, *Campylaspis costata*: ♂ laterally.  
Fig. 62, *Campylaspis legendrei*: ♂ laterally.  
Fig. 63, *Campylaspis sulcata*: ♂ laterally.  
Fig. 64, *Cumella pygmaea*: ♂ laterally.  
Fig. 64a, *Cumella tarda*: ♂ front of carapace laterally.  
Fig. 65, *Nannastacus unguiculatus*: ♀ dorsally.  
Fig. 66, *Nannastacus longirostris*: ♂ dorsally.  
Fig. 67, *Nannastacus brevicaudatus*: ♀ laterally.  
Figs. 68—69, *Hemilamprops rosea*: 68, ♀ telson dorsally; 69, ♂ laterally.  
Fig. 70, *Lamprops fuscata*: ♀ telson dorsally.  
Fig. 71, *Lamprops fasciata*: ♂ laterally.  
Fig. 72, *Petalosarsia declivis*: ♂ laterally.  
Fig. 73, *Pseudocuma similis*: ♀ front of carapace laterally.  
Figs. 74—76, *Pseudocuma longicornis*: 74, ♀ front of carapace laterally; 75, ♂ laterally; 76, ♂ hind end ventrally.  
Fig. 77, *Pseudocuma gilsoni*: ♂ hind end ventrally.





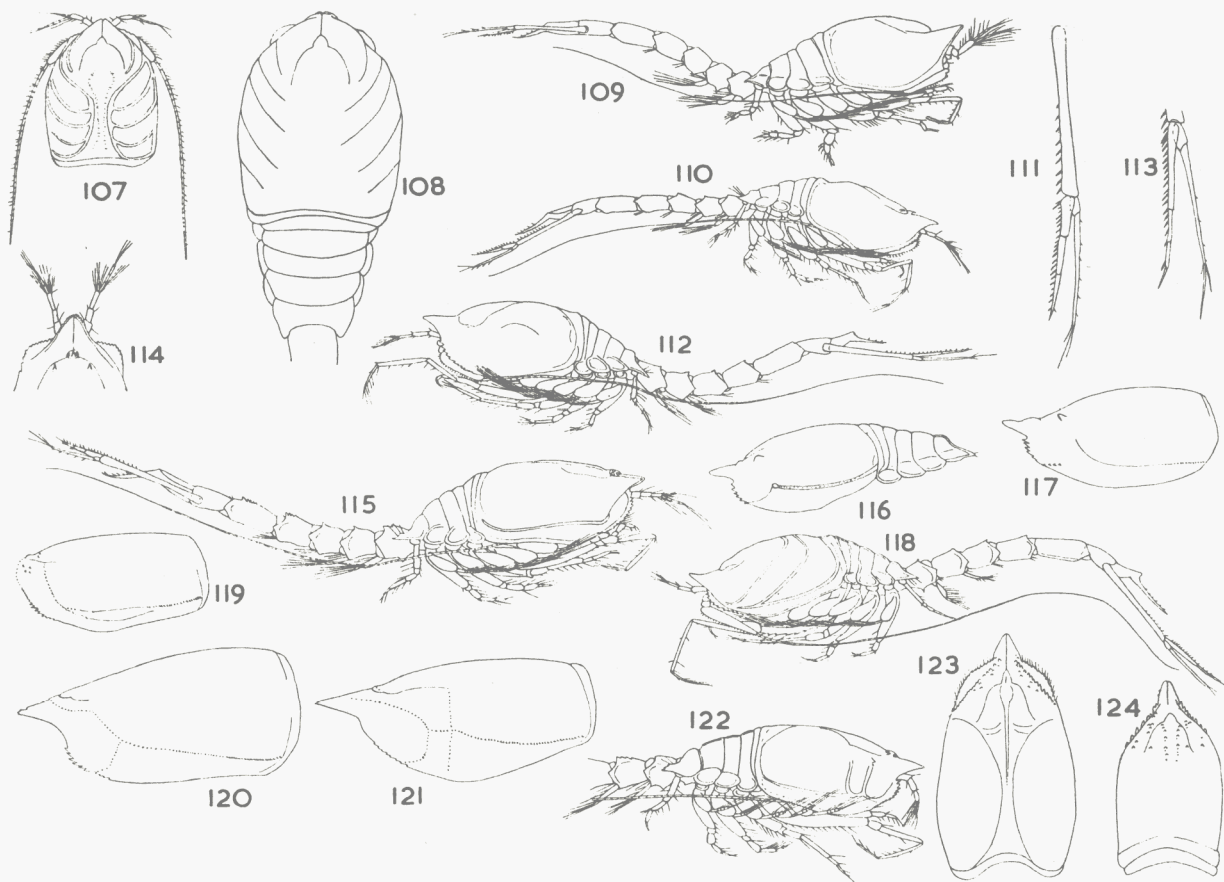


Fig. 78, *Leptostylis villosa*: ♀ hind end dorsally.  
 Fig. 79, *Leptostylis ampullacea*: ♀ hind end dorsally.  
 Fig. 80, *Leptostylis longimana*: ♀ hind end dorsally.  
 Fig. 81, *Leptostylis ampullacea*: ♀ laterally.  
 Figs. 82—83, *Leptostylis villosa*: 82, ♀ laterally; 83, ♀ front edge of carapace.  
 Fig. 84, *Diastylis serrata*: ♀ hind end dorsally.  
 Fig. 85, *Diastylis rugosa*: ♀ laterally.  
 Figs. 86—87, *Diastylis biplicata*: 86, ♀ laterally; 87, ♀ telson dorsally.  
 Fig. 88, *Diastylis scorpioides*: ♀ carapace laterally.  
 Fig. 89, *Diastylis lepechini*: ♀ carapace laterally.  
 Fig. 90, *Diastylis edwardsi*: ♀ carapace laterally.  
 Fig. 91, *Brachydiastylis resima*: ♀ carapace and thorax laterally.  
 Fig. 92, *Diastylis goodsiri*: ♀ carapace and thorax laterally.  
 Fig. 93, *Diastylis spinulosa*: ♀ dorsally.  
 Fig. 94, *Diastylis cornuta*: ♀ carapace dorsally.  
 Fig. 95, *Diastylis boeckii*: ♀ carapace dorsally.  
 Fig. 96, *Diastylis tumida*: ♀ dorsally.  
 Figs. 97—98, *Diastylis lucifera*: 97, ♀ carapace and thorax laterally; 98, ♀ telson dorsally.  
 Fig. 99, *Diastylis glabra*: ♀ carapace and thorax dorsally.  
 Fig. 100, *Diastylis oxyrhyncha*: ♀ carapace and thorax dorsally.

Fig. 101, *Diastylis sulcata*: ♀ carapace and thorax dorsally.  
 Figs. 102—104, *Diastylis laevis*: 102, ♀ dorsally; 103, ♀ fifth thoracic somite dorsally; 104, ♀ first peraeopod.  
 Figs. 105—106, *Diastylis bradyi*: 105, ♀ fifth thoracic somite dorsally; 106, ♀ first peraeopod.  
 Fig. 107, *Diastylis lepechini*: ♂ carapace dorsally.  
 Fig. 108, *Diastylis edwardsi*: ♂ carapace and thorax dorsally.  
 Fig. 109, *Brachydiastylis resima*: ♂ laterally.  
 Figs. 110—111, *Diastylis lucifera*: 110, ♂ laterally; 111, ♂ uropod dorsally.  
 Figs. 112—113, *Diastylis serrata*: 112, ♂ laterally; 113, ♂ rami of uropod dorsally.  
 Fig. 114, *Diastylis lucifera*: ♂ front of carapace dorsally.  
 Fig. 115, *Diastylis tumida*: ♂ laterally.  
 Fig. 116, *Diastylis cornuta*: ♂ carapace and thorax laterally.  
 Fig. 117, *Diastylis boeckii*: ♂ carapace laterally.  
 Fig. 118, *Diastylis biplicata*: ♂ laterally.  
 Fig. 119, *Diastylis sulcata*: ♂ carapace laterally.  
 Fig. 120, *Diastylis laevis*: ♂ carapace laterally.  
 Fig. 121, *Diastylis bradyi*: ♂ carapace laterally.  
 Fig. 122, *Diastylis rugosa*: ♂ carapace and thorax laterally.  
 Fig. 123, *Diastylis oxyrhyncha*: ♂ carapace dorsally.  
 Fig. 124, *Diastylis glabra*: ♂ carapace dorsally.