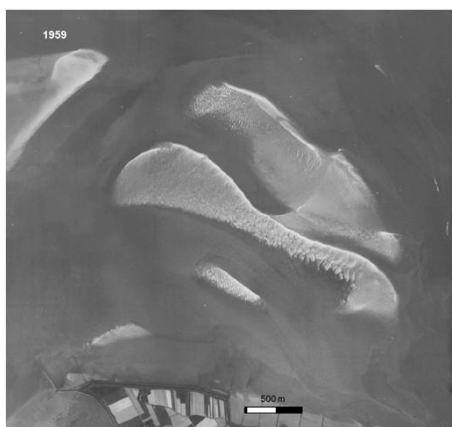
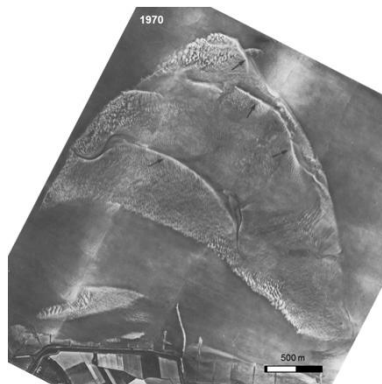


Disappearing connecting channels & merging tidal flats

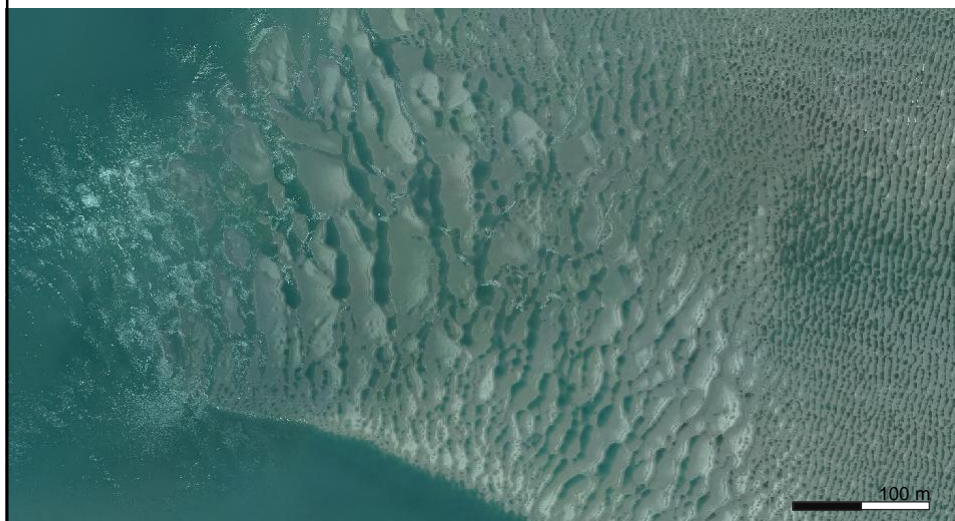


Geoloket Provincie Zuid-Holland



Kohsiek & Terwindt, 1982

Less and less mega-ripple fields on the flats

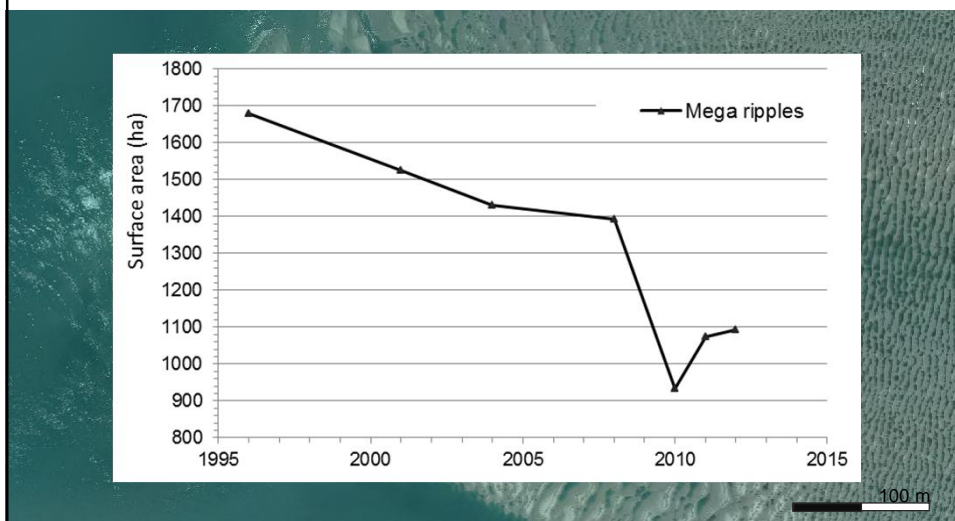


2012, Rijkswaterstaat

Sluiter 2015 | © ARCADIS 2015

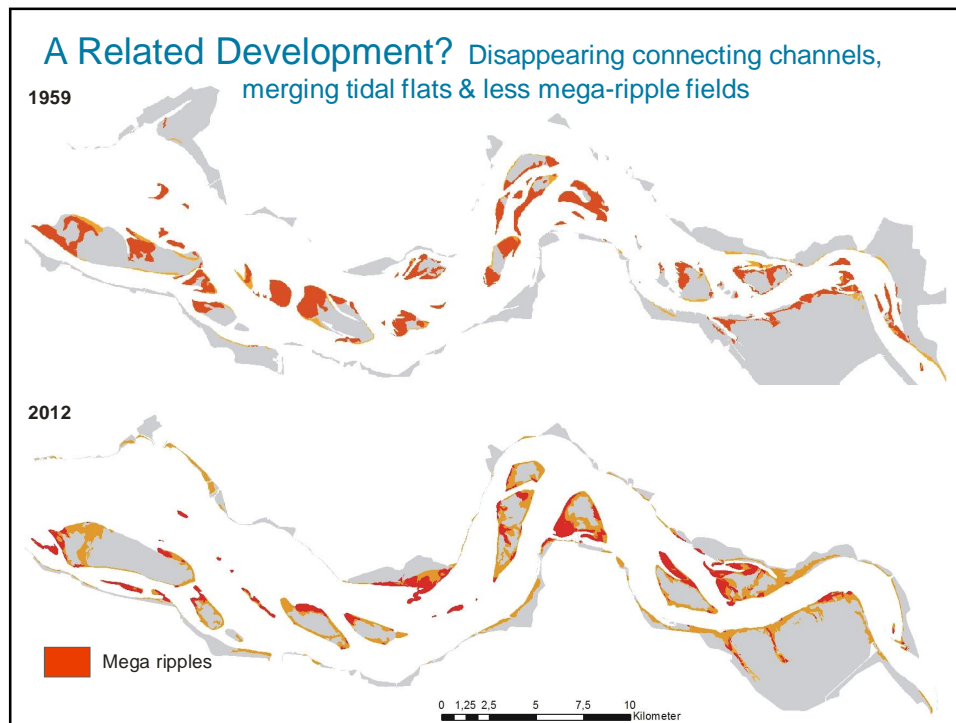


Less and less mega-ripple fields on the flats



Sluiter 2015 | © ARCADIS 2015





A Smooth Scheldt

Observation:

- Disappearing connecting channels, merging tidal flats & less mega-ripple fields
- Through the entire Western Scheldt

Mechanisms:

- Long-term effect of embankments?
- Intrinsic pattern development of channels?

Implications

- Reduction of water line: impact on waders
- Less mega-ripple fields potential plus for bottom dwellers
- Hydrodynamics ?