

**Scottish Sea
Fisheries
Statistics
2007**



**natural
scotland**
SCOTTISH GOVERNMENT

Scottish Sea Fisheries Statistics 2007

© Crown copyright 2008

ISBN: 978 0 7559 7209 8

Scottish Government
St Andrew's House
Edinburgh
EH1 3DG

Produced for the Scottish Government by RR Donnelley B57458 09/08

Published by the Scottish Government, September, 2008

Further copies are available from
Blackwell's Bookshop
53 South Bridge
Edinburgh
EH1 1YS

100% of this document is printed on recycled paper and is 100% recyclable.

Scottish Sea Fisheries Statistics, 2007

Contents

Vessels

	Page
Overview of the Scottish Fishing Fleet	1-4
Table 1. Active Scottish based vessels, power, by overall length group, 31st December 1997 to 2007	5
Chart 1. Landings by Scottish based vessels, 1997 to 2007	5
Chart 2. Active Scottish based vessels, 1997 to 2007	5
Table 2. Active Scottish based vessels, tonnage and power by overall length group and age group, 31st December 2007	6
Chart 3. Scottish based vessels by type, 1997 to 2007	6
Chart 4. Scottish based vessels, average length for demersal, pelagic and shellfish vessels, 1997 to 2007	6
Table 3. Active Scottish based vessels: number, tonnage and power, by overall length group, 31st December 2007	7
Table 4. Active Scottish based vessels, by main fishing method, 31st December 1997 to 2007	7
Table 5. Active Scottish based vessels, by main fishing method and overall length group, 31st December 2007	7
Table 6. Active Scottish based vessels by base district and overall length group, 31st December 2007	8
Table 7. Changes to the Scottish based over 10 metres fleet , 31st December 2006 to 2007	8
Table 8. Scottish based sea fishing licences by category, 31st December 2005 to 2007	8
Table 9. Scottish based sea fishing licences, vessel capacity units by type of licence, 31st December 2007	8
Table 10. Scottish based over 10 metres sea fishing licences by category, 31st December 2006 to 2007	8

Employment

Table 11. Employment in sea fishing, and Scottish labour force, 2000 to 2007	9
Table 12. Value of sea fish landings into Scotland by Scottish based vessels; fishermen employed, by selected region, 2007	9
Table 13. Number of fishermen employed on Scottish based vessels, 2003 to 2007	9
Table 14. Number of fishermen employed by district and employment status, 2007	9
Chart 5. Number of fishermen employed on Scottish based vessels, 1967 to 2007	9

Landings

Overview of Catches and Landings	10-15
Map Figure 1: Volume landed by district, 2007; Figure 2: Value landed by district, 2007	16
Table 15. Total Allowable Catches, UK quotas and liveweight landed by UK vessels, 2003 to 2007	17-19
Chart 6. UK percentage uptake of main quota stocks, 2007	19
Table 16. Fixed quota units by sea area and country, 1st January, 2008	19
Table 17. Live weight and value of landings, by species type, 2003 to 2007	20
Table 18. Voyages and landings by Scottish based vessels by landing district, 2006 and 2007	20
Table 19. Liveweight and value of landings into the UK by UK vessels, by main species and country of landing, 2003 to 2007	21
Table 20. Liveweight and value of landings into Scotland by UK vessels, by main species, 2003 to 2007	21
Table 21. Liveweight and value of landings into Scottish ports by UK vessels, by landing district and species type, 2003 to 2007	22
Table 22. Disposal of sea fish landed into Scotland by UK vessels, 2003 to 2007	22
Table 23. Liveweight and value of landings into Scotland by UK vessels, by landing district and main species, 2007	23,24
Chart 7. Average prices of landings into Scotland by UK vessels, by species type, 1990 to 2007	23
Chart 8. Liveweight landings into Scotland by UK vessels by species type, 1967 to 2007	24
Chart 9. Average prices of landings into Scotland, by species type and month, 2007	25
Table 24. Liveweight and value of landings into Scotland by foreign vessels, by main species, 2003 to 2007	25
Table 25. Liveweight and value of landings into Scotland by foreign vessels, by country of origin, 2003 to 2007	25
Table 26. Liveweight and value of landings into Scotland by foreign vessels, by landing district, 2003 to 2007	25
Table 27. Liveweight and value of landings by Scottish based vessels, by main species, 2003 to 2007	26
Chart 10. Value of landings at 2007 prices per Scottish based over 10 metres vessel, by vessel type, 1998 to 2007	27
Table 28. Liveweight and value of landings abroad by Scottish based vessels, by country of landing, 2003 to 2007	27
Table 29. Liveweight and value of landings from specified ICES areas by Scottish based vessels, by main species, 2007	27
Table 30. Liveweight and value of landings by Scottish based vessels, by main species and overall vessel length group, 2007	28
Chart 11. Value of landings at 2007 prices by Scottish based vessels by species type, 1998 to 2007	28
Table 31. Liveweight and value of landings by Scottish based vessels, by main species and gear, 2007	29
Table 32. Key commercial quota stocks landed by Scottish based vessels, 2003 to 2007	30
Chart 12. Liveweight landings by Scottish based vessels by quarter, 2007	30
Chart 13. Average value of landings per day at sea by Scottish based over 10 metres vessels by vessel type, 2007	31
Chart 14. Effort days by Scottish based over 10 metres vessels by vessel type, 2007	31
Table 33. Effort days by Scottish based over 10 metres vessels by loes area, 2007	31
Table 34. Effort days by Scottish based over 10 metres vessels by length group, 2007	31
Annex 1 Map of port districts and ports in Scotland	32
Annex 2 ICES fishing areas around the UK coastline	33

1. Overview of the Scottish Fishing Fleet

1.1 The regulation of the UK Fleet

The structure and capacity of the UK and Scottish fishing fleets has, since 1983, been dictated primarily by the EU Common Fisheries Policy (CFP). Between 1997 and 2002, fleet structure was managed within the CFP through the fourth Multi Annual Guidance Programme (MAGP) designed to tailor fleet capacity to available fish stocks across the EU. Under this programme the UK fishing fleet was divided into eight segments, defined primarily by broad fishing method¹, and capacity limits or effort reduction targets set for each segment. MAGP IV has now ended and has been replaced by global effort ceilings at member state level controlled through a system of entry/exit controls. In simple terms, a vessel can only enter the fleet when equivalent capacity has exited the fleet.

At a UK level to date, restrictive licensing has been the main Government instrument to bring the activities of the UK fishing fleet into line with MAGP and UK aims on fleet and catch management. Aside from a few limited exceptions, all vessels engaged in commercial sea fishing are required to hold a licence issued by UK Fisheries Departments. There are a finite number of licences in existence and no new licences are made available. This places a ceiling on the total number of vessels in the UK fishing fleet. In order to license new vessels, fishermen must acquire one or more existing licences from other previously licensed vessels. Capacity penalties are applied when licences are transferred, or aggregated to form a larger licence unit, and these, together with the restricted number of licences on issue, form a mechanism resulting in reductions in the capacity of the UK fleet.

The UK restrictive licensing controls, in combination with successive decommissioning schemes (1994-1997; 2001-2002 and 2003-2004), explain many of the fleet trends in recent years and the figures presented here are interpreted in this context where appropriate.

1.2 Fleet size

2007 saw a continuation of recent changes to the Scottish fleet, either directly or indirectly prompted by measures designed to conserve vulnerable whitefish stocks, particularly cod. The most important of these measures in recent years have been the two successive decommissioning schemes in 2001-2002 and 2003-04, under which 165 vessels were removed from the fleet.

During 2006, it was discovered that the UK Core Vessel file, the official source of information on UK vessels, had been notified of Scottish vessels becoming inactive while they were still

¹ Pelagic Gears; Beam trawl; Demersal seines and nephrops; Lines & Nets; Shellfish-Mobile; Shellfish-Fixed; Distant Water; and vessels under 10 metres

recorded on FIN as active. An exercise was conducted to take this information on board into FIN, leading to an appreciable drop in the number of active vessels recorded. Because this issue affected the figures for earlier years, the figures published in years before 2006 were revised in the 2006 bulletin.

There were 2,191 active fishing vessels based in Scotland at the end of 2007, a net reduction of 33 (1 per cent) since 2006 (Table 1). There were reductions in the number of active vessels in 11 out of 18 districts (Table I below), with losses mainly in the West and Western Isles. The number of active vessels did increase in 6 districts.

Table I: Changes in numbers of active Scottish based vessels 2006-07, by district.

District	Number of active vessels		Change
	2006	2007	
Eyemouth	98	100	2
Pittenweem	101	108	7
Aberdeen	93	92	-1
Peterhead	99	104	5
Fraserburgh	221	214	-7
Buckie	79	78	-1
Wick	120	128	8
Orkney	153	155	2
Shetland	185	177	-8
Stornoway	303	281	-22
Lochinver	18	15	-3
Kinlochbervie	26	25	-1
Ullapool	67	69	2
Mallaig	71	69	-2
Oban	132	129	-3
Campbeltown	161	155	-6
Ayr	158	153	-5
Portree	139	139	-
Total	2,224	2,191	-33

Source: Table 6 and equivalent 2006 figures.

The under 10 metre segment of the fleet decreased by 24 vessels (2 per cent) to 1,494 over the year to December 2007 and has decreased by 9 per cent since 1997 (Table 1). The over 10 metres fleet decreased by 9 vessels (1 per cent) in 2007. This segment is now 37 per cent smaller than in 1997, a trend which has affected the demersal (down 45 per cent), pelagic (down 52 per cent) and shellfish (down 27 per cent) sectors.

1.3 Vessel Capacity

1.3.1 Overall length

The average overall length of vessels in the over 10m fleet was 19.74 metres in 2007, an increase of one centimetre on the 2006 figure, when the average length was at its lowest value in the decade. Since 2001, the average vessel length within the over 10m segment has fallen by 4 per cent (Table 1).

1.3.2 Engine Power

Engine power statistics in earlier years have been underestimated to an unknown degree, due the inclusion of vessels with engines operating at a higher power than permitted on their licences. In November 1999, in response to this problem, Fisheries Departments introduced special (concessionary) licensing arrangements and a timetable for compliance with engine power controls. Under the compliance timetable licence holders who have admitted to under declaration, had until the end of 2004 to ensure that either: (i) their true engine power is registered and to have acquired enough licence entitlement to cover this, or (ii) to have de-rated their engine to the figure on their licence. In practice, most have chosen to acquire extra licences to cover their operational engine power. Consequently, it needs to be borne in mind that after 1999, the trends in average engine power shown in Table 1 are complicated by the effect of an increasing number of owners declaring their true, higher, engine power. Nevertheless, while this bias makes the actual rate of change unclear, it is clear that Scottish based vessels are now fishing with greater engine power on average than in the past. However recent years show that this may have stabilised.

The total registered engine power of the over 10m Scottish fleet was 323 thousand kilowatts in 2007 (Table 1) a fall of 1 per cent since 2006 and 16 per cent lower than 1997. However, average engine power, at 463 kW, has increased by 33 per cent since 1997. The opposing trends of decreasing total fleet engine capacity and increasing average engine power per can be explained by a combination of factors: (i) the 37 per cent reduction in the number of vessels in the over 10 m fleet since 1997 (Section 1.2); (ii) the “natural wastage” of licensed engine power that often accompanies the aggregation of several licences onto a single vessel² and; (iii) since 1999, the progressive correction of under declared engine power, in line with the concessionary licensing arrangements noted above.

² Occurs when the sum of the engine power capacities attached to the licences used in an aggregation, exceeds the maximum engine power of the vessel on which the aggregate licence is used. The excess engine power entitlement is then effectively lost from the fleet total.

1.4 Employment

The 2005 employment figures were revised in the 2006 bulletin because they were affected by an understatement in the figures recorded by Peterhead Fisheries Office. The 2005 figures for Peterhead have been estimated as being the same as the 2006 figures.

Total employment in the catching sector increased by four per cent to 5,424 from 2006 to 2007 (Table 11), while the number of fishermen regularly employed on Scottish based vessels at 4,408 was seven per cent higher than in 2006 (Table 13). The number of irregularly employed (mainly part time) fishermen in 2007 decreased by 48 to 951.

At a district level, the largest increase in the recorded numbers in regular employment occurred at Ayr (+102) jobs. Once again Fraserburgh has the most fishermen in regular and total employment.

Table 1. Active⁽¹⁾ Scottish based vessels and power, by overall length group, 31st December 1997 to 2007

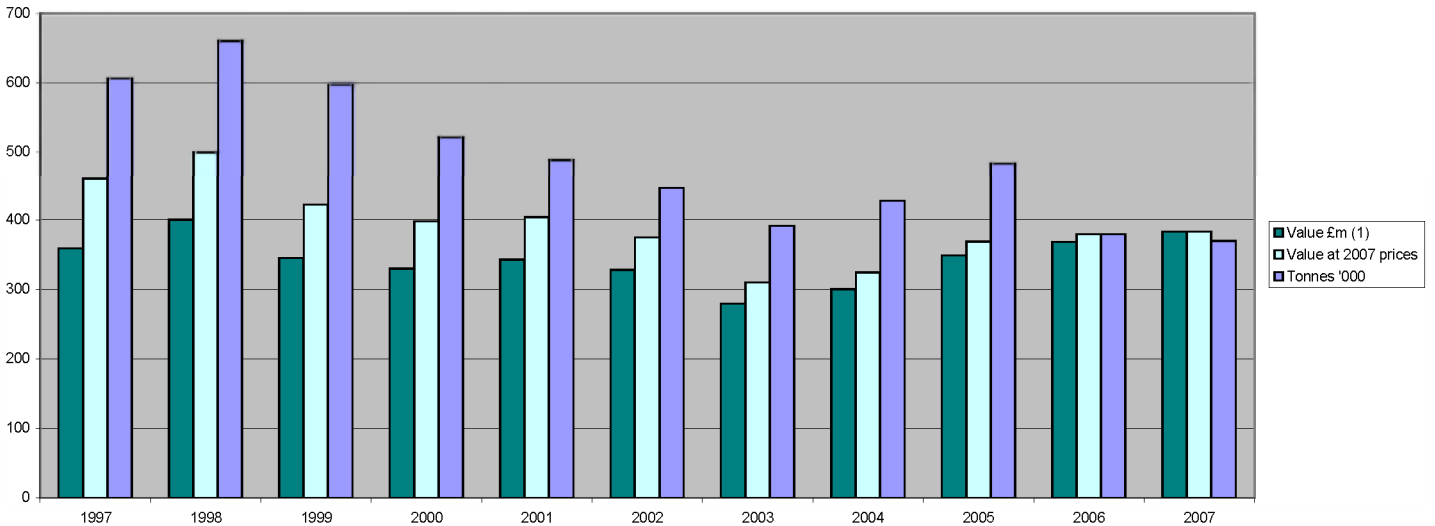
		10 metres	>10 <15	15<20	20<25	25<30	30<35	35 metres	Total	Over 10 metres	
		& under	metres	metres	metres	metres	metres	& over		Number	Average ⁽²⁾
Number	1997 (r)	1,643	348	298	244	134	18	67	2,752	1,109	19.92
	1998 (r)	1,605	315	274	226	130	17	64	2,631	1,026	20.17
	1999 (r)	1,584	297	263	208	128	19	64	2,563	979	20.33
	2000 (r)	1,593	286	253	199	125	22	64	2,542	949	20.50
	2001 (r)	1,604	280	259	202	118	23	62	2,548	944	20.52
	2002 (r)	1,615	274	235	148	91	18	62	2,443	828	20.18
	2003 (r)	1,588	270	223	117	66	16	57	2,337	749	19.90
	2004 (r)	1,595	269	212	113	64	17	55	2,325	730	19.92
	2005 (r)	1,567	270	204	112	61	15	57	2,286	719	19.92
	2006 (r)	1,518	273	193	110	61	16	53	2,224	706	19.73
	2007	1,494	273	187	109	59	15	54	2,191	697	19.74
										Power	Average
Total power (kW)	1997 (r)	70,686	41,600	68,699	95,886	70,953	11,047	97,583	456,454	385,768	347.85
	1998 (r)	70,085	37,815	63,640	90,502	69,356	12,781	100,966	445,146	375,061	365.56
	1999 (r)	71,120	35,734	61,524	83,593	69,632	15,002	102,209	438,814	367,694	375.58
	2000 (r)	76,082	34,878	60,289	82,024	69,701	17,601	106,798	447,373	371,291	391.24
	2001 (r)	79,189	35,055	64,844	85,258	66,966	19,362	120,971	471,644	392,455	415.74
	2002 (r)	80,489	35,146	60,512	65,161	53,578	14,093	128,010	436,989	356,499	430.55
	2003 (r)	80,652	35,976	58,113	52,524	38,883	13,215	141,665	421,028	340,376	454.44
	2004 (r)	81,562	36,811	55,675	50,857	37,618	13,886	147,841	424,250	342,688	469.44
	2005 (r)	82,073	37,413	54,694	50,324	35,466	11,854	148,895	420,718	338,645	470.99
	2006	80,131	38,201	51,802	49,751	35,440	13,174	135,966	404,464	324,334	459.40
	2007	78,753	38,698	51,316	49,296	34,431	11,719	137,190	401,402	322,650	462.91

Scottish based vessels are those licensed at a Scottish port; Scottish registered vessels are those registered at a Scottish port on the Register of Shipping and Seamen. From the beginning of 1993 there was a requirement that all 10 metres and under vessels should be licensed.

⁽¹⁾ During 2006, it was discovered that the UK Core Vessel file, the official source of information on UK vessels, had been notified of Scottish vessels becoming inactive while they were still recorded on FIN as active. An exercise was conducted to take this information on board into FIN, leading to an appreciable drop in the number of active vessels recorded. Because this issue affected the figures for earlier years, figures have been revised.

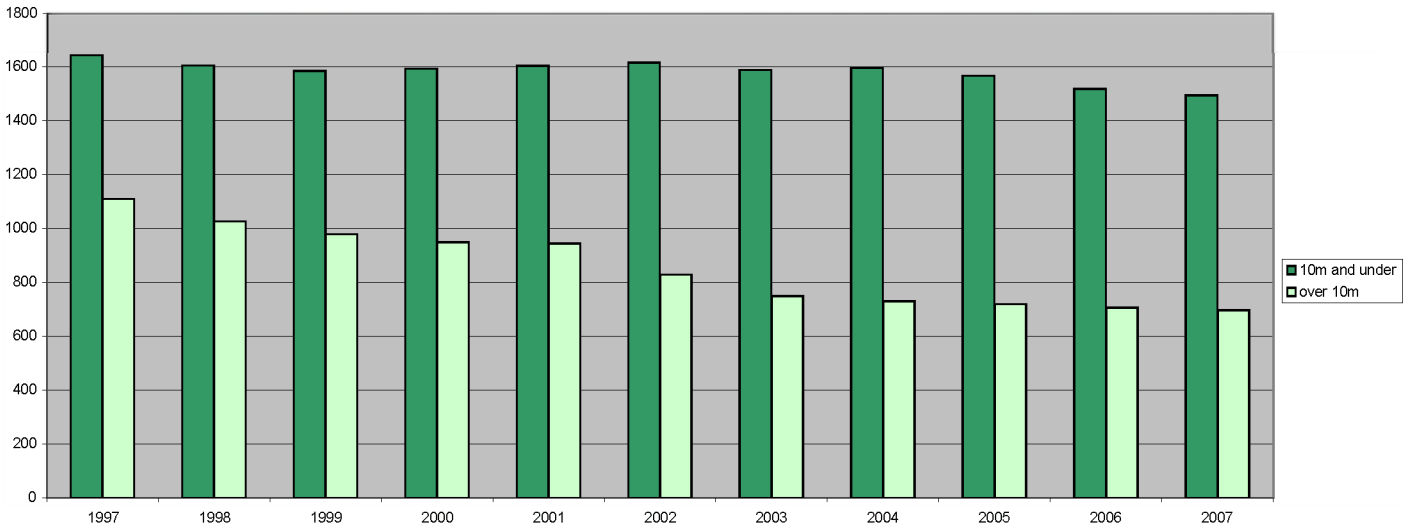
⁽²⁾ Vessel average length figures have been re-calculated retrospectively.

Chart 1. Landings by Scottish based vessels, 1997 to 2007



(1) When the Register of Buyers and Sellers (RBS) was introduced in September 2005, Sales Notes were not initially required for sales of shellfish and information on the value of such landings is consequently missing. The value has therefore been estimated for a number of landings, mostly shellfish, relating to voyages starting on or after 1 September 2005.

Chart 2. Active⁽¹⁾ Scottish based vessels, 1997 to 2007



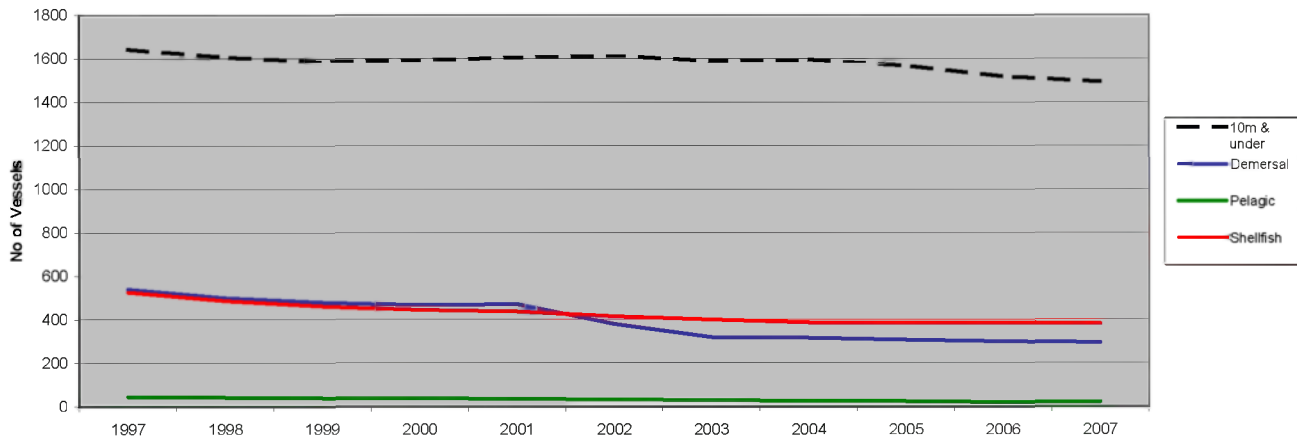
⁽¹⁾ See footnote to Table 1

Table 2. Active Scottish based vessels, tonnage and power by overall length group and age group, 31st December 2007

	10 metres & under	>10 <15 metres	15<20 metres	20<25 metres	25<30 metres	30<35 metres	35 metres & over	Total	Over 10 metres
Number									
Under 10 years	165	24	25	17	8	3	20	262	97
10<15	88	13	10	13	7	1	5	137	49
15<20	258	59	13	20	11	2	5	368	110
20<25	155	34	21	24	14	1	6	255	100
25<30	171	33	17	13	6	-	3	243	72
30<35	97	27	36	15	6	2	4	187	90
35 years & over	151	52	59	4	4	5	5	280	129
Not known	409	31	6	3	3	1	6	459	50
Total	1,494	273	187	109	59	15	54	2,191	697
Average age (years)	22.8	24.9	27.4	20.6	21.2	26.0	17.4	23.3	24.0
Total tonnage									
Under 10 years	825	591	3,544	3,910	2,981	1,709	32,175	45,734	44,910
10<15	329	231	1,116	2,623	2,409	532	6,042	13,282	12,953
15<20	888	983	1,269	3,522	2,689	587	2,568	12,506	11,618
20<25	574	595	2,362	3,979	3,162	375	3,079	14,126	13,552
25<30	664	538	1,412	1,881	1,137	-	1,102	6,734	6,070
30<35	406	381	2,180	1,910	1,025	434	1,400	7,736	7,330
35 years & over	563	784	2,769	408	590	1,113	1,784	8,011	7,448
Not known	1,227	396	749	401	597	224	4,864	8,458	7,231
Total	5,476	4,498	15,401	18,634	14,590	4,974	53,014	116,587	111,111
Average tonnage	4	16	82	171	247	332	982	53	159
Total power (kW)									
Under 10 years	14,444	5,537	10,291	10,137	6,395	4,314	85,578	136,696	122,252
10<15	6,812	2,239	3,029	7,437	5,296	673	12,776	38,262	31,450
15<20	13,421	9,223	4,389	8,582	6,008	1,631	6,731	49,984	36,564
20<25	7,097	4,263	6,460	9,820	7,277	855	9,282	45,053	37,957
25<30	7,871	4,052	5,105	5,356	3,089	-	5,026	30,499	22,628
30<35	4,350	2,968	8,355	5,418	2,959	1,296	3,441	28,787	24,437
35 years & over	5,015	5,453	11,505	1,347	1,693	2,447	3,272	30,731	25,717
Not known	19,744	4,963	2,182	1,200	1,714	503	11,083	41,389	21,645
Total	78,753	38,698	51,316	49,296	34,431	11,719	137,190	401,402	322,650
Average power	53	142	274	452	584	781	2,541	183	463

Year on year tonnage comparisons should be made with caution, since these figures take no account of the phased replacement of GRT with GT during the period 1996-2003.

Chart 3. Scottish based vessels by type, 1997 to 2007



From the beginning of 1993 there was a requirement that all 10 metres and under vessels should be licensed.

Chart 4. Scottish based vessels, average length for Demersal, Pelagic and Shellfish vessels, 1997 to 2007

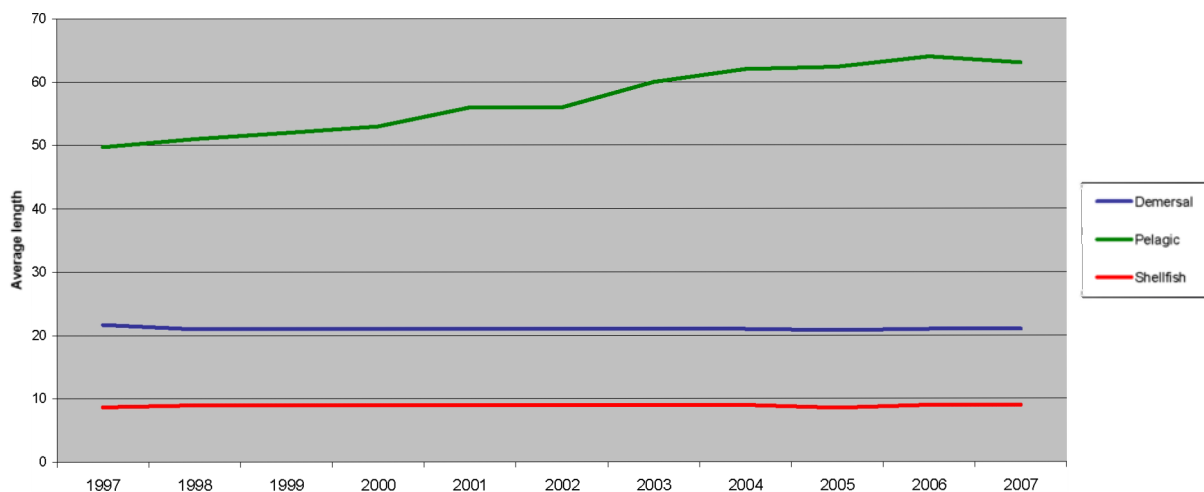


Table 3. Active Scottish based vessels: number, tonnage and power by overall length group, 31st December 2007

Length	Tonnes	Vessels	Total tonnes
10m & under	<40	1,494	5,476
>10 <15	<40	267	4,237
	40-60	6	261
	Total	273	4,498
15<20	<40	21	756
	40-60	59	2,839
	60-80	26	1,761
	80-100	19	1,701
	100-150	45	5,427
	150-200	17	2,918
	Total	187	15,401
20<25	40-60	1	57
	60-80	1	72
	80-100	5	448
	100-150	33	4,419
	150-200	46	7,951
	200-300	19	4,421
	300-500	4	1,266
	Total	109	18,634
25<30	100-150	4	501
	150-200	13	2,256
	200-300	27	6,343
	300-500	15	5,490
	Total	59	14,590
30<35	150-200	3	555
	200-300	6	1,433
	300-500	2	745
	Over 500	4	2,241
	Total	15	4,974
35 & over	200-300	3	838
	300-500	22	8,805
	Over 500	29	43,371
	Total	54	53,014
Total	Under 40	1,782	10,470
	40-60	66	3,156
	60-80	27	1,833
	80-100	24	2,149
	100-150	82	10,346
	150-200	79	13,680
	200-300	55	13,035
	300-500	43	16,306
	Over 500	33	45,612
	Total	2,191	116,587

Length	kW	Vessels	Total power
10m & under	<40	800	14,650
	40-75	329	18,401
	75-150	280	28,784
	150-225	67	12,213
	225-375	18	4,705
	Total	1,494	78,753
>10<15	<40	2	73
	40-75	26	1,664
	75-150	151	16,336
	150-225	63	11,887
	225-375	29	7,761
	375-550	2	977
	Total	273	38,698
15<20	75-150	15	1,940
	150-225	57	10,912
	225-375	85	25,095
	375-550	29	12,750
	550-750	1	620
	Total	187	51,316
20<25	150-225	1	221
	225-375	34	11,524
	375-550	55	24,833
	550-750	17	10,946
	Over 750	2	1,772
	Total	109	49,296
25<30	150-225	2	442
	225-375	3	1,035
	375-550	22	10,648
	550-750	28	18,169
	Over 750	4	4,137
	Total	59	34,431
30<35	375-550	5	2,390
	550-750	5	3,275
	Over 750	5	6,054
	Total	15	11,719
35 & over	375-550	2	992
	550-750	10	6,800
	Over 750	42	129,397
	Total	54	137,190
Total	Under 40	802	14,723
	40-75	355	20,064
	75-150	446	47,060
	150-225	190	35,675
	225-375	169	50,120
	375-550	115	52,590
	550-750	61	39,810
	Over 750	53	141,360
	Total	2,191	401,402

Year on year tonnage comparisons should be made with caution, since these figures take no account of the phased replacement of GRT with GT during the period 1996-2003.

Table 4. Active⁽¹⁾ Scottish based vessels by main fishing method, 31st December 1997 to 2007

	10m & under				Over 10m										Total			
	Nephrops trawl	Creel fishing	Other	Total	Pelagic				Demersal				Shellfish			Total		
					Purse seine	Pelagic trawl	Other	Total	Trawl	Seine	Lines	Other	Total	Nephrops trawl			Other	Total
1997 (r)	63	1,469	111	1,643	27	19	-	46	413	103	8	14	538	282	243	525	1,109	2,752
1998 (r)	66	1,417	122	1,605	25	17	-	42	384	96	5	14	499	249	236	485	1,026	2,631
1999 (r)	73	1,391	120	1,584	21	19	-	40	374	87	4	14	479	237	223	460	979	2,563
2000 (r)	88	1,383	122	1,593	18	20	-	38	366	85	4	11	466	223	222	445	949	2,542
2001 (r)	94	1,390	120	1,604	10	26	-	36	378	79	5	9	471	221	216	437	944	2,548
2002 (r)	94	1,399	122	1,615	9	24	-	33	319	44	6	11	380	204	211	415	828	2,443
2003 (r)	99	1,371	118	1,588	8	21	-	29	272	33	4	11	320	193	207	400	749	2,337
2004 (r)	103	1,371	121	1,595	6	20	-	26	265	33	9	10	317	181	206	387	730	2,325
2005 (r)	100	1,347	120	1,567	6	19	-	25	255	34	9	10	308	177	209	386	719	2,286
2006	98	1,299	121	1,518	5	16	-	21	247	33	10	10	300	171	214	385	706	2,224
2007	95	1,292	107	1,494	5	17	-	22	241	35	9	9	294	172	209	381	697	2,191

From the beginning of 1993 there was a requirement that all 10 metres and under vessels should be licensed.

⁽¹⁾ See footnote to Table 1

Table 5. Active Scottish based vessels, by main fishing method and overall length group, 31st December 2007

	10 metres & Under	>10 <15 metres	15<18 metres	18<25 metres	25<35 metres	35<50 metres	50 metres & over	Total
Demersal single trawl	17	20	25	93	33	8	-	196
Demersal pair trawl	-	-	4	13	7	1	-	25
Seine net	-	-	2	23	9	1	-	35
Lines	29	-	-	-	6	3	-	38
Demersal gill nets	10	2	-	-	2	4	-	18
Demersal twirl/mult trawl	1	1	2	11	5	1	-	21
Beam trawl	-	1	-	1	2	13	-	17
Other demersal	-	-	-	1	-	-	-	1
Demersal total	57	24	33	142	64	31	-	351
Purse seine	-	-	-	-	-	1	4	5
Pelagic trawl	-	-	-	-	-	-	17	17
Other pelagic	-	-	-	-	-	-	-	-
Pelagic total	-	-	-	-	-	1	21	22
Creel fishing	1,292	112	6	2	-	-	-	1,412
Nephrops trawl	95	103	50	17	2	-	-	267
Mechanical dredging	15	28	25	21	8	1	-	98
Suction dredging	1	2	-	-	-	-	-	3
Shell fishing by hand	34	4	-	-	-	-	-	38
Shellfish total	1,437	249	81	40	10	1	-	1,818
Total	1,494	273	114	182	74	33	21	2,191

Table 6. Active Scottish based vessels by base district and overall length group, 31st December 2007

	10 metres & Under	>10 <15 metres	15<18 metres	18<25 metres	25<35 metres	35<50 metres	50 metres & over	Total
Eyemouth	70	19	3	7	1	-	-	100
Pittenweem	89	15	2	2	-	-	-	108
Aberdeen	75	8	-	6	2	1	-	92
Peterhead	41	2	3	26	15	15	2	104
Fraserburgh	101	13	12	55	21	1	11	214
Buckie	33	5	6	27	5	2	-	78
Wick	107	12	3	4	2	-	-	128
Total east coast	516	74	29	127	46	19	13	824
Orkney	115	29	4	1	5	1	-	155
Shetland	133	15	3	14	5	-	7	177
Stornoway	222	37	19	2	-	-	1	281
Total Islands	470	81	26	17	10	1	8	613
Lochinver	12	1	-	2	-	-	-	15
Kinlochbervie	21	1	-	3	-	-	-	25
Ullapool	46	16	6	1	-	-	-	69
Mallaig	39	9	11	9	1	-	-	69
Oban	93	19	9	7	1	-	-	129
Campbeltown	104	32	16	3	-	-	-	155
Ayr	76	20	15	13	16	13	-	153
Portree	117	20	2	-	-	-	-	139
Total west coast	508	118	59	38	18	13	-	754
Total	1,494	273	114	182	74	33	21	2,191

A district is a geographical area within which there are a number of creeks or ports.

Table 7. Changes to the Scottish based, over 10 metres fleet, 31st December 2006 to 2007

	>10 <15 metres	15<20 metres	20<25 metres	25<30 metres	30<35 metres	35 metres & over
Active Scottish vessels, 31st December 2006	273	193	110	61	16	53
Continued to be based in Scotland	263	182	106	59	15	50
Transferred to another UK port	3	8	2	-	-	-
Became inactive	7	3	2	2	1	3
Transferred from another UK port	5	4	2	-	-	4
Became active	2	-	-	-	-	-
Newly built vessels	3	1	1	-	-	-
Change of vessel length category	-	-	-	-	-	-
Active Scottish vessels, 31st December 2007	273	187	109	59	15	54

Table 8. Scottish based sea fishing licences by category, 31st December 2005 to 2007

	Vessel licences				Entitlements				Total			
	Category A	Category B	Category C	<=10m	Category A	Category B	Category C	<=10m	Category A	Category B	Category C	<=10m
2005	572	84	63	1,567	54	2	9	95	626	86	72	1,662
2006	559	85	62	1,518	47	1	7	117	606	86	69	1,635
2007	552	81	64	1,494	54	4	7	100	606	85	71	1,594

In 2007, includes 22 pelagic licences (category A) on vessels.

Category A licences allow full access to all stocks available to UK vessels.

Category B licences allow only restricted access to some UK available stocks.

Category C licences further restrict the range of stocks that can be fished.

Table 9. Scottish based sea fishing licences: vessel capacity units by type of licence, 31st December 2007

	On vessels				Entitlements				Total			
	Category A	Category B	Category C	<=10m	Category A	Category B	Category C	<=10m	Category A	Category B	Category C	<=10m
Pelagic licences	59,969	-	-	-	11,884	-	-	-	71,853	-	-	-
Other licences	162,979	9,416	9,869	67,047	11,386	202	671	1,966	174,365	9,618	10,540	69,013

Table 10. Scottish based, over 10 metres sea fishing licences, by category, 31st December 2006 to 2007

	On vessels			Entitlements		
	Category A	Category B	Category C	Category A	Category B	Category C
Scottish based licences, 31st December 2006	559	85	62	47	1	7
Remained on Scottish based vessels	533	79	60	32	-	4
Became Scottish entitlements	14	4	1	8	-	-
Transferred/aggregated to UK vessels	12	2	1	6	1	3
Other losses	-	-	-	1	-	-
Placed on vessel from Scottish entitlements	9	1	1	22	4	3
Transferred/aggregated from other UK ports	10	1	3	-	-	-
Scottish based licences, 31st December 2007	552	81	64	54	4	7

Table 11. Employment in sea fishing and Scottish labour force, 2000 to 2007

	2000	2001	2002	2003	2004	2005 (r)	2006	2007
Total employed in the catching sector	6,902	6,637	5,707	5,276	5,275	5,155	5,205	5,424
Total labour force ('000)	2,332	2,339	2,358	2,380	2,429	2,451	2,498	2,521
Employment in fishing as % of labour force	0.3	0.3	0.2	0.2	0.2	0.2	0.2	0.2

Source : Total Labour Force data - 2004-2007: Annual Population Survey (Jan-Dec); 2000-2003: Annual Labour Force Survey (Mar-Feb); Scottish Fishery Protection Agency. In 2005 Peterhead's employment figures were under-recorded. Their figures for 2005 have now been estimated as being the same as in 2006.

Table 12. Value of sea fish landings into Scotland by Scottish based vessels; fishermen employed, by selected region, 2007

Region	Landings (1) 2006	Labour force (2)	Fishermen employed	As % labour force
Eilean Siar, Orkney & Shetland	73.7	36	1,395	3.88
Aberdeenshire	142.7	128	1,356	1.06
Angus	1.7	53	62	0.12
Argyll & Bute	21.0	44	489	1.11
City of Aberdeen	8.7	113	54	0.05
City of Edinburgh	0.2	248	5	0.00
Dumfries and Galloway	3.9	70	163	0.23
East Lothian	2.0	46	57	0.12
Fife	4.6	176	125	0.07
Highland	57.9	112	809	0.72
Moray	3.2	44	255	0.58
North Ayrshire	0.9	60	29	0.05
Scottish Borders	4.2	55	106	0.19
South Ayrshire	4.7	53	519	0.98
Total	329	1,238	5,424	0.44

(1) £ million (2) thousands, Office for National Statistics

Table 13. Number of fishermen employed on Scottish based vessels, 2003 to 2007

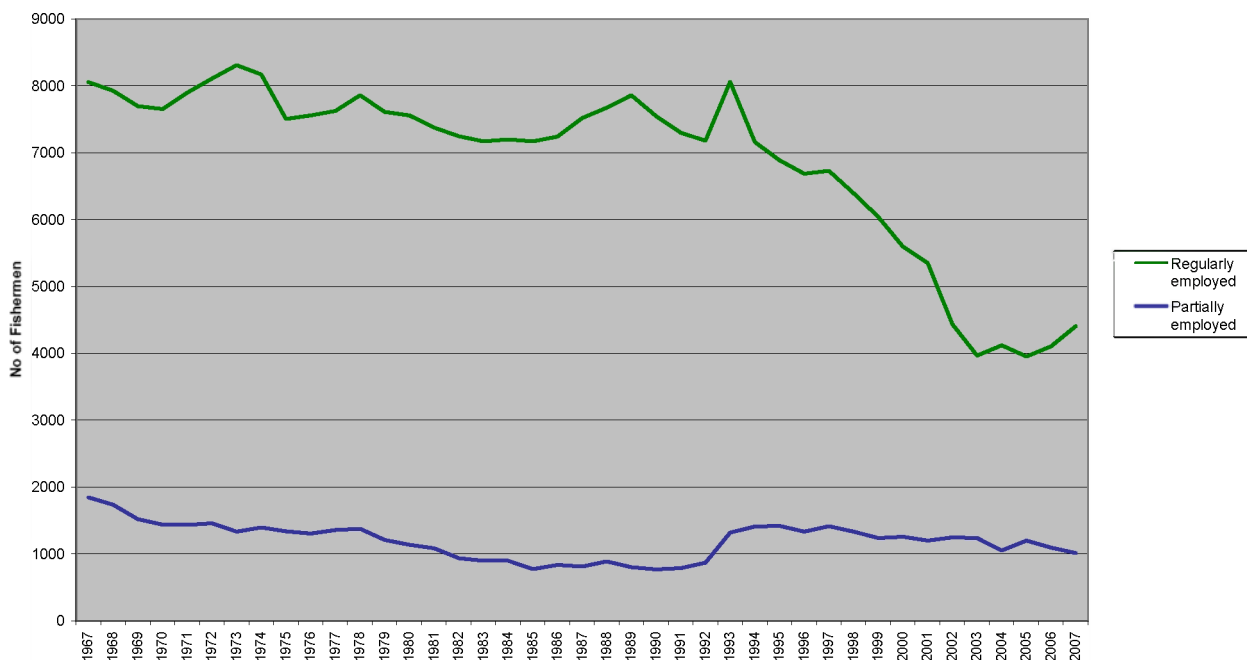
	2003	2004	2005 (r)	2006	2007
Regularly employed	3,968	4,124	3,952	4,109	4,408
Irregularly employed	1,238	1,052	1,110	999	951
Crofters	70	99	93	97	65
Total	5,276	5,275	5,155	5,205	5,424

Figures are limited to those employed on vessels which submit landing declarations to Scottish Fisheries Protection Agency port offices. They exclude, for example, those employed in cockle picking.

Table 14. Number of fishermen employed by district and employment status, 2007

	Regularly employed	Irregularly employed	Crofters	Total
Eyemouth	148	20	0	168
Pittenweem	95	30	0	125
Aberdeen	103	54	0	157
Peterhead	469	0	0	469
Fraserburgh	693	153	0	846
Buckie	228	27	0	255
Wick	197	0	0	197
Orkney	317	73	0	390
Shetland	352	174	0	526
Stornoway	343	137	29	509
Lochinver	22	3	2	27
Kinlochbervie	40	1	0	41
Ullapool	86	13	0	99
Mallaig	137	15	0	152
Oban	168	55	0	223
Campbeltown	248	34	0	282
Ayr	609	95	0	704
Portree	153	67	34	254
All districts	4,408	951	65	5,424

Chart 5. Number of fishermen employed on Scottish based vessels, 1967 to 2007

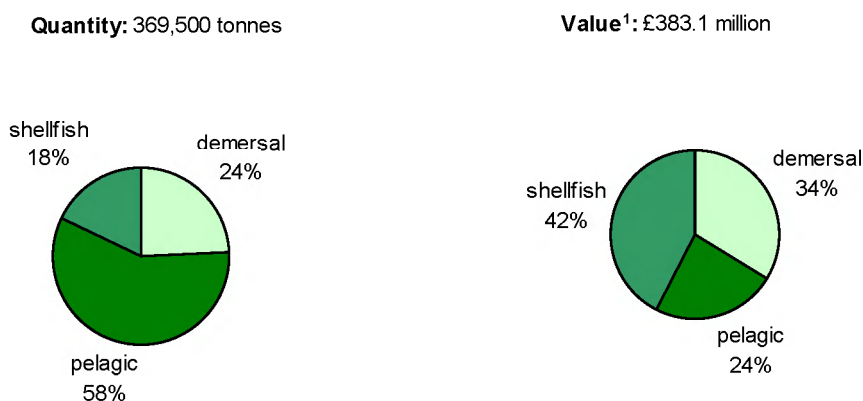


2. Overview of Catches and Landings

2.1 Landings by Scottish based vessels

Scottish based vessels made 83 thousand voyages in 2007, a 3 per cent increase on the number in 2006 (Table 18). The value of landings increased by 1 per cent in real terms to £380 million despite the live weight landed dropping by 10 thousand tonnes (3 per cent) to 370,000 tonnes. The value of shellfish landings increased by 13 per cent in real terms to £163 million in 2007 with the volume of landings in this sector increasing by 13 per cent to 67 thousand tonnes. High value shellfish landings formed 18 per cent of the total by weight but 42 per cent by value (Chart 1), making shellfish the most valuable sector to the Scottish fleet (Chart 11). The value of demersal landings decreased by 8 per cent in real terms to £130 million, with the volume of landings decreasing by 5 per cent to 89 thousand tonnes. Demersal landings made up 34 per cent of the total value and 24 per cent of the total volume. The 2007 pelagic landings have been affected by the repayment arrangements agreed with the Commission for historic undeclared landings of herring and mackerel. Under administrative arrangements, repayment started in 2006 and continued into 2007. The volume of pelagic species landed decreased by 5 per cent to 213 thousand tonnes. Although prices per tonne landed increased, the value landed decreased by 4 per cent in real terms to £91 million. Pelagic landings made up 24 per cent of the total value and 58 per cent of the total volume. The proportion of the value of the annual catch of the Scottish based fleet landed into Scotland increased slightly to 86 per cent (calculated from table 18).

Chart 1: Total landings by Scottish based vessels by species type, 2007



Looking at the longer term trends, the value of demersal landings decreased steeply between 1998 and 2003 but has stabilised thereafter and the 2007 figure of £130 million is still 7 per cent higher in real terms compared with 2003. The value of pelagic landings (at 2007 prices) has increased by 5 per cent from £86 million in 2003 to £91 million in 2007.

¹ When the Register of Buyers and Sellers (RBS) was introduced in September 2005, Sales Notes were not initially required for sales of Shellfish and information on the value of such landings is consequently missing. The value has therefore been estimated for a number of landings in 2005, mostly of shellfish, relating to voyages starting on or after 1st September 2005

The value of shellfish landings has increased by 58 per cent in real terms since 2003 to reach £163 million.

The total quantity of fish landed by Scottish vessels has fallen by 6 per cent since 2003 (calculated from Table 27) affecting the pelagic sector most (down by 27 thousand tonnes or 11 per cent). Demersal landings by Scottish based vessels into UK ports have decreased compared with 2003 by 13 thousand tonnes to 77 thousand tonnes while demersal landings abroad have increased, resulting in an overall decrease of 10 thousand tonnes, or 10 per cent. The quantity of shellfish landed in 2007 was 31 per cent higher than in 2003.

2.2 Total landings into Scotland

The quantity and value of all landings into each Scottish Fishery Office district are shown in Figures 1 and 2, respectively.

In 2007, the total value of fish landed into Scottish ports by vessels of all nationalities was £403 million, an increase of under 1 per cent over the value of landings in 2006, at 2007 prices. The increase in value compared with 2003 (at 2007 prices) is 28 per cent. In 2007, the total quantity landed into Scottish ports by vessels of all nationalities was 402 thousand tonnes, 4 per cent higher than in 2006, and 6 per cent higher than in 2003 (Table 17). There has been a further separation in the contribution of the demersal and pelagic sectors since 2003, with demersal species declining from 35 per cent to 27 per cent of landed volume, while pelagic species have increased from 52 per cent to 57 per cent (calculated from Table 17). However, since 2003 the quota for key demersal² stocks has increased by 19 per cent and the quota for and key pelagic³ stocks has decreased by 22 per cent.

Table II: Combined UK quota ('000 tonnes) for key demersal and pelagic stocks 2003-2007 (based on Table 15)

Quota ('000 tonnes)	2003	2004	2005	2006	2007	Change 2003 - 2007
<i>Combined key demersal stocks</i>	128	141	142	149	153	+25 (+19%)
<i>Combined key pelagic stocks</i>	276	277	251	206	216	-61 (-22%)

2.3 Landings by UK vessels into Scotland by area and district

In 2007, UK vessels landed 310 thousand tonnes of all species, at a value of £350 million, into Scottish ports. These landings represent an increase of 5 per cent in value from 2006

² Key demersal stocks are considered to be North Sea & West of Scotland stocks of Cod, Haddock, Monkfish, Whiting, Saithe, Plaice and Norway Lobster.

³ Key pelagic stocks are considered to be North Sea & West of Scotland stocks of Mackerel, Herring and Horse Mackerel

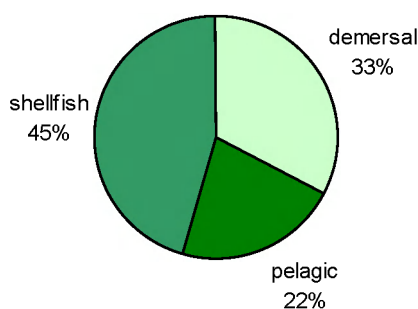
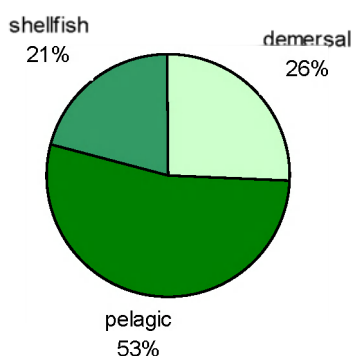
(at 2007 prices) and an increase of 8 per cent in quantity (Table 17). This increase in quantity landed is mainly due to the increase in pelagic landings. The value of landings at 2007 prices by UK vessels into Scotland has increased by 36 per cent in real terms since 2003.

The species type composition of these landings was broadly similar to that of landings by Scottish based vessels (Chart I), although pelagic vessels formed a smaller proportion of the UK landings into Scotland total (Chart II) as Scottish vessels landed 57 thousand pelagic tonnes abroad (Table 17).

Chart II: Landings⁴ by UK vessels into Scotland, 2007

Quantity: total 311,100 tonnes

Value⁴: total £348.3 million



Regional breakdown

Eastern Area: Eyemouth, Pittenweem, Aberdeen, Peterhead, Fraserburgh, Buckie
(Comparisons calculated from table 21)

- In 2007, the volume of landings by UK vessels into the six eastern districts increased by 3 per cent to 164,000 tonnes and the value of landings increased by 5 per cent to £176 million.
- Aberdeen, Buckie and Eyemouth experienced decreases in the value of landings in 2007.

Northern Area: Wick, Orkney, Shetland, Stornoway, Kinlochbervie, Lochinver

- The value of pelagic landings into Shetland increased by 31 per cent to £34 million causing an overall increase of £10 million in the total value of all landings into Shetland.

⁴ When the Register of Buyers and Sellers (RBS) was introduced in September 2005, Sales Notes were not initially required for sales of Shellfish and information on the value of such landings is consequently missing. The value has therefore been estimated for a number of landings in 2005, mostly of shellfish, relating to voyages starting on or after 1st September 2005

- The value of landings into Lochinver decreased by 10 per cent to £8 million, due to the decreased value of demersal landings. The value of landings into other ports in the Northern area in 2007 were similar to the values in 2006.

Western Area: Ullapool, Mallaig, Portree, Oban, Campbeltown, Ayr

- The value of shellfish landings into Campbeltown increased by 42 per cent to £15 million, causing an overall increase in value of all landings of £5 million.
- The value of landings into Ullapool decreased by 22 per cent to £9 million. This was a result of decreased demersal landings.
- The value of landings increased in 5 out of 6 western districts due to increased shellfish landings.

2.4 Landings by foreign vessels into Scotland

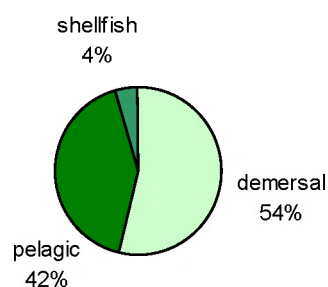
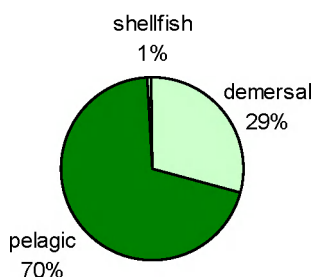
Foreign vessels landed 91 thousand tonnes of fish worth £55 million into Scottish ports in 2007, a 5 per cent decrease in quantity and a 21 per cent decrease in value from 2006 (at 2007 prices). The proportion of total tonnage landed by foreign vessels in 2007 decreased from 25 per cent in 2006 to 23 per cent in 2007 (Table 17). This decrease reflects a drop of 6 thousand tonnes of pelagic species landed by foreign vessels and an increase of 21 thousand tonnes in pelagic landings by UK vessels into Scotland.

In 2007 the composition of species types landed by foreign vessel was similar to 2006, with a slight decrease in the proportion of the landings into Scotland of pelagic species, now forming 70 per cent by volume (Chart III). Most of the remainder comprised demersal species, with just 764 tonnes of shellfish landed (Table 24).

Chart III: Foreign landings⁵ into Scotland by species type, 2007

Quantity: total 90,700 tonnes

Value⁵: total £54.7 million



⁵ When the Register of Buyers and Sellers (RBS) was introduced in September 2005, Sales Notes were not initially required for sales of Shellfish and information on the value of such landings is consequently missing. The value has therefore been estimated for a number of landings in 2005, mostly of shellfish, relating to voyages starting on or after 1st September 2005

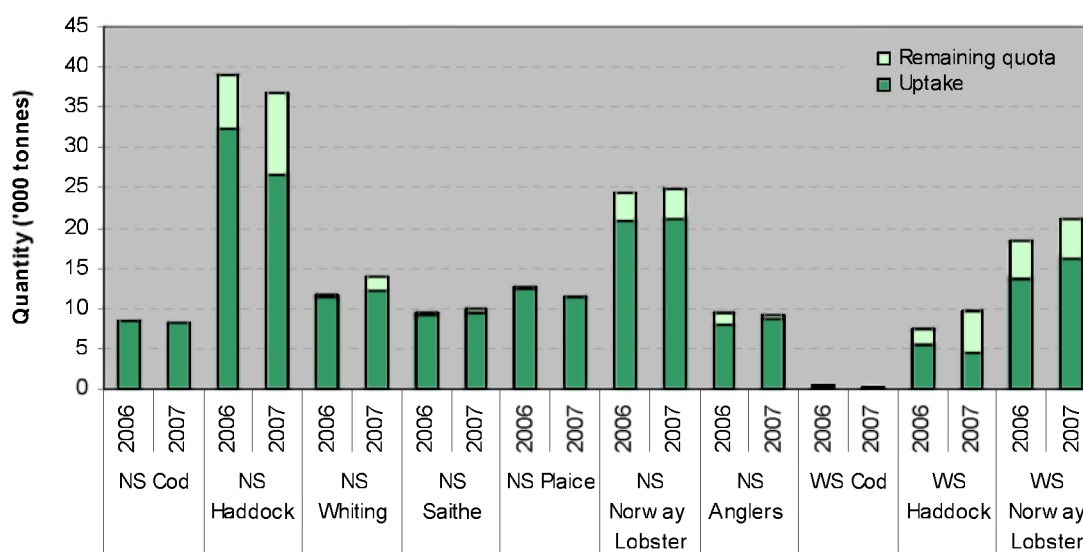
2.5 Uptake of UK quota

2.5.1 Demersal stocks

Quota uptake reached 90 per cent or more, just exceeding 100 per cent for NS Cod and NS Plaice, for four of the ten most important demersal stocks (NS Cod, NS Saithe, NS Anglers and NS Plaice; Chart IV, Table 15). Uptake of these key quota stocks in 2007 was similar to that in 2006 in some cases, but the following exceptions were noted:

- Uptake of NS Whiting decreased from 98 to 87 per cent, as quota increased by 19 per cent and landings increased by only 5 per cent.
- Uptake of NS Haddock decreased from 83 to 73 percent despite quota decreasing by 6 per cent.
- Uptake of NS Anglers increased from 83 to 94 per cent, as landings increased by 11 per cent while quota decreased by 2 per cent.
- Uptake of WS Haddock decreased from 72 to 45 per cent, as landings decreased by 18 per cent while quota increased by 31 per cent.

Chart IV: Quota uptake of main North Sea (NS) and West of Scotland (WS) demersal stocks by UK vessels in 2006 and 2007



2.5.2 Pelagic stocks

Quota uptake for the four most important pelagic stocks continued to be high in 2007, approaching 100 per cent for NS Herring, WS Herring and WS Mackerel and exceeding 80 per cent for WS Horse Mackerel. There were some notable changes in quota over the last year for these stocks:

- NS Herring quota decreased by 30 per cent; landings correspondingly decreased by 30 per cent.
- WS Herring quota decreased by 6 per cent; landings correspondingly decreased by 4 per cent, resulting in uptake increasing from 97 to 99 per cent.
- WS Horse Mackerel quota increased by 7 per cent but landings decreased by 3 per cent, resulting in uptake decreasing from 95 to 86 per cent.

Chart V: Quota uptake of main North Sea (NS) and West of Scotland (WS) pelagic stocks by UK vessels in 2006 and 2007.

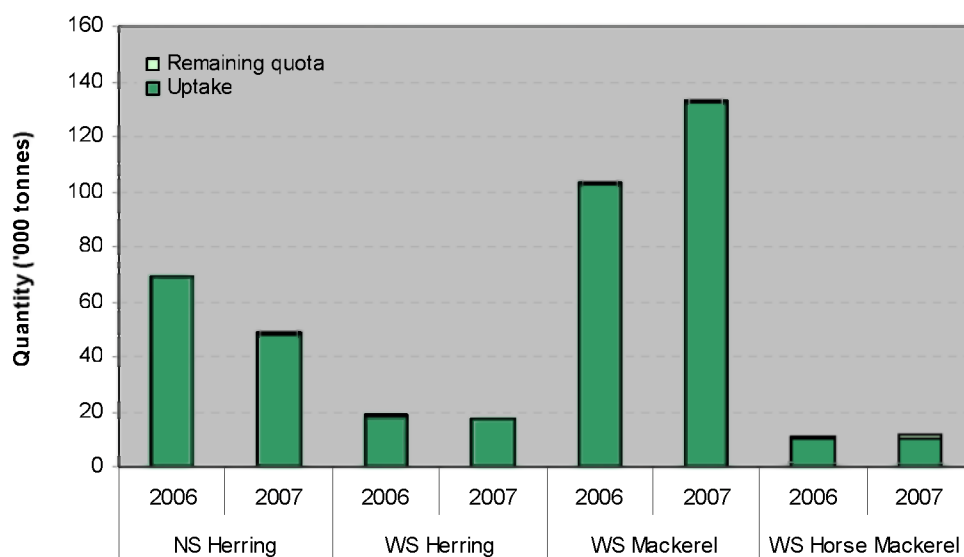


Figure 2: Value (£) landed by district, 2007

District value



- Demersal
- Pelagic
- Shellfish

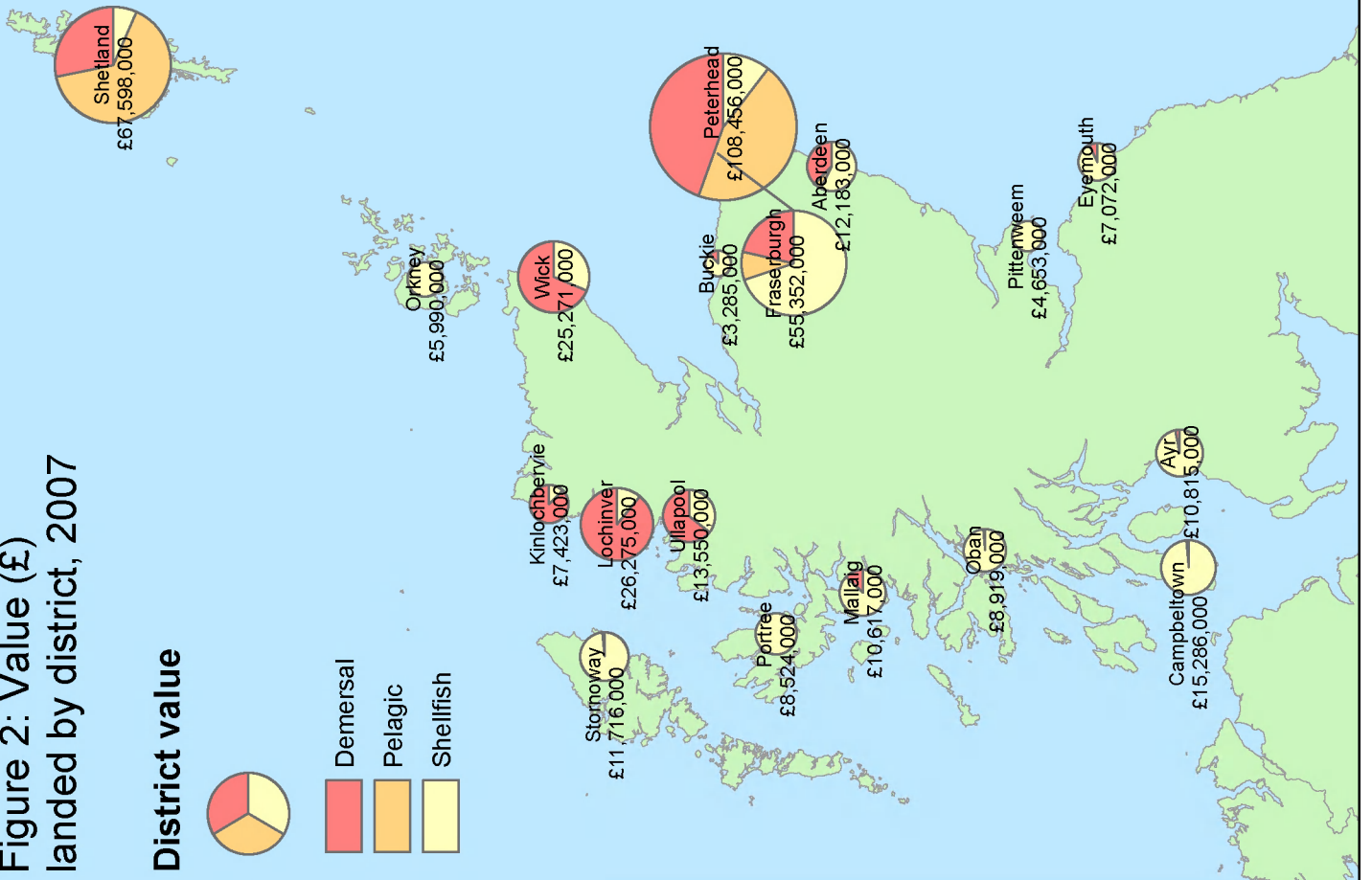


Figure 1: Volume (live weight tonnes) landed by district, 2007

District weight



- Demersal
- Pelagic
- Shellfish

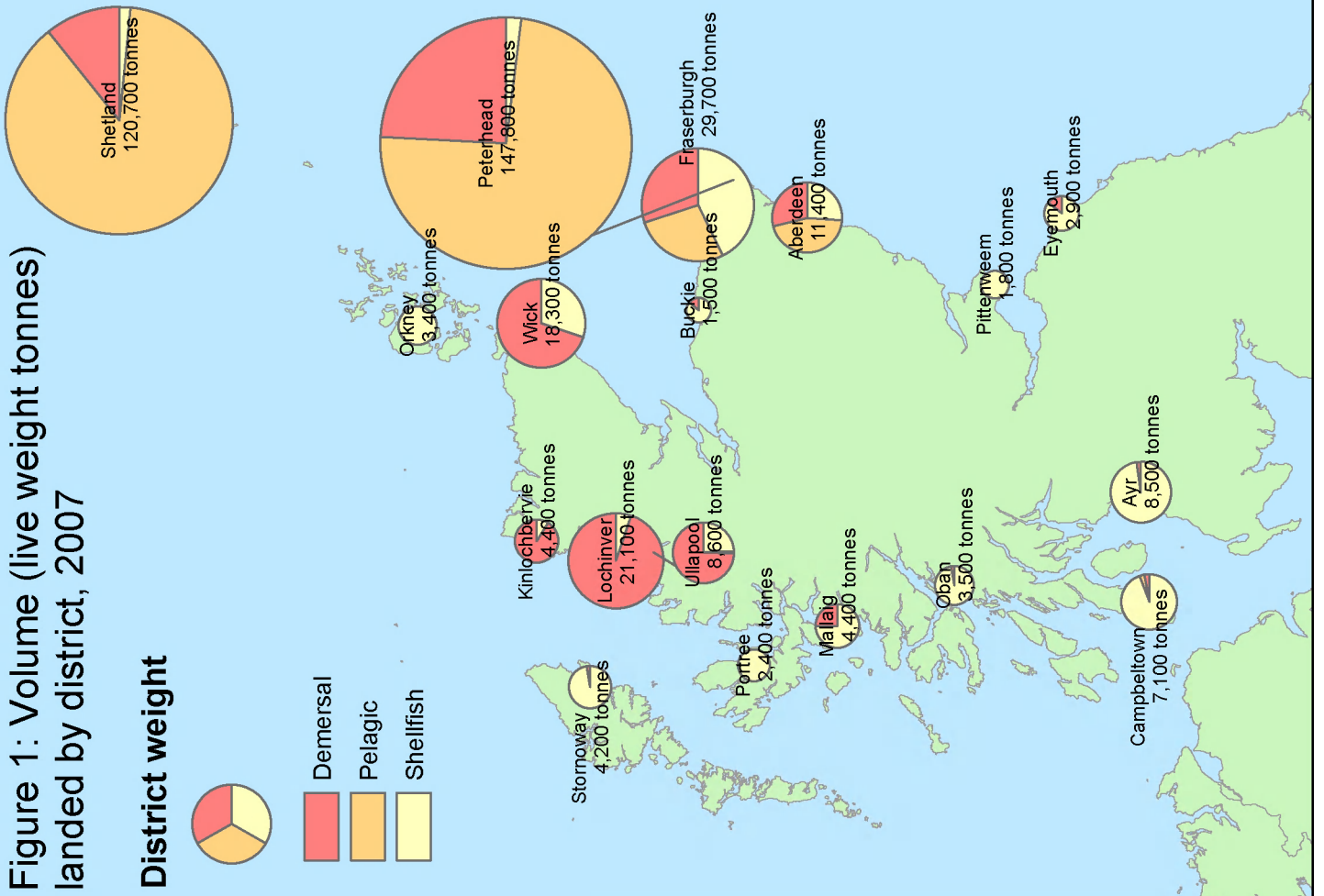


Table 15. Total Allowable Catches, UK quotas, and liveweight landed by UK vessels, 2003 to 2007

Area	Species	Sea area	Year	EU total allowable catch		UK quota		UK uptake	
				After exchanges	% of TAC	Tonnes	% of quota		
North sea	Cod	IIa (EU),IV	2003	22,659	10,696	47.2	10,062	94.1	
			2004	22,659	9,507	42.0	8,534	89.8	
			2005	22,659	8,674	38.3	7,953	91.7	
			2006	19,260	8,357	43.4	8,342	99.8	
			2007	16,564	8,035	48.5	8,099	100.8	
	Haddock	IIa (EU),IV	2003	39,521	33,257	84.2	33,099	99.5	
			2004	65,467	49,537	75.7	40,495	81.7	
			2005	51,321	44,123	86.0	42,422	96.1	
			2006	44,546	39,053	87.7	32,378	82.9	
			2007	46,983	36,841	78.4	26,725	72.5	
	Whiting	IIa (EU),IV	2003	12,294	7,257	59.0	6,417	88.4	
			2004	12,294	6,784	55.2	6,267	92.4	
			2005	19,800	10,544	53.3	8,110	76.9	
			2006	17,370	11,733	67.5	11,482	97.9	
			2007	21,420	13,915	65.0	12,112	87.0	
	Saithe	IIa,III(EU),IV	2003	79,200	13,463	17.0	7,078	52.6	
			2004	91,200	14,654	16.1	6,397	43.7	
			2005	69,600	10,239	14.7	8,766	85.6	
			2006	59,160	9,379	15.9	9,229	98.4	
			2007	59,160	10,069	17.0	9,443	93.8	
	Plaice	IIa (EU),IV	2003	69,282	18,313	26.4	13,890	75.8	
			2004	57,923	15,004	25.9	15,253	101.7	
			2005	57,370	13,932	24.3	12,707	91.2	
			2006	55,820	12,651	22.7	12,429	98.2	
			2007	49,143	11,403	23.2	11,558	101.4	
	Sole	II,IV	2003	15,850	827	5.2	759	91.8	
			2004	17,000	869	5.1	889	102.3	
			2005	18,320	1,127	6.2	945	83.9	
			2006	17,470	1,256	7.2	910	72.5	
			2007	14,920	1,406	9.4	1,207	85.8	
	Hake	IIa(EU),IV(EU)	2003	1,053	175	16.6	131	74.9	
			2004	1,373	233	17.0	213	91.4	
			2005	1,496	262	17.5	251	95.8	
			2006	1,541	326	21.2	320	98.2	
			2007	1,850	397	21.5	360	90.7	
	Nephrops	IIa(EU),IV(EU)	2003	16,623	14,005	84.3	12,374	88.4	
			2004	18,987	16,047	84.5	15,145	94.4	
			2005	21,350	18,101	84.8	18,079	99.9	
			2006	24,380	24,432	100.2	21,003	86.0	
			2007	26,144	24,837	95.0	21,207	85.4	
	Nephrops	IV(Norway)	2003	11,000	3,775	34.3	1,881	49.8	
			2004	11,000	4,045	36.8	1,586	39.2	
2005			7,000	2,488	35.5	1,006	40.4		
2006			7,000	2,581	36.9	1,234	47.8		
2007			1,300	61	4.7	0	0.0		
Anglers	IIa(EU),IV(EU)	2003	7,000	6,245	89.2	6,060	97.0		
		2004	7,000	6,157	88.0	6,048	98.2		
		2005	10,314	8,950	86.8	8,059	90.0		
		2006	10,314	9,509	92.2	7,845	82.5		
		2007	11,345	9,313	82.1	8,739	93.8		
Megrin	IIa(EU),IV(EU)	2003	2,700	2,589	95.9	1,232	47.6		
		2004	1,890	1,814	96.0	1,114	61.4		
		2005	1,740	1,677	96.4	1,197	71.4		
		2006	1,740	1,655	95.1	1,326	80.1		
		2007	1,479	1,424	96.3	1,428	100.3		
Lemon sole & witches	IIa(EU),IV(EU)	2003	8,262	5,039	61.0	2,045	40.6		
		2004	7,023	4,089	58.2	1,634	40.0		
		2005	6,500	3,825	58.8	1,885	49.3		
		2006	6,175	3,431	55.6	1,794	52.3		
		2007	6,175	3,498	56.6	2,098	60.0		
Skate & rays	IIa(EU),IV(EU)	2003	4,121	2,655	64.4	1,270	47.8		
		2004	3,503	2,266	64.7	1,115	49.2		
		2005	3,220	2,080	64.6	825	39.7		
		2006	2,737	1,695	61.9	726	42.8		
		2007	2,190	1,020	46.6	706	69.2		
Dabs & flounder	IIa(EU),IV(EU)	2003	23,001	2,144	9.3	1,301	60.7		
		2004	19,551	1,684	8.6	1,197	71.1		
		2005	18,000	1,830	10.2	1,606	87.8		
		2006	17,100	2,218	13.0	1,629	73.4		
		2007	17,100	1,767	10.3	1,329	75.2		
Turbot & brill	IIa(EU),IV(EU)	2003	5,738	886	15.4	514	58.0		
		2004	4,877	732	15.0	605	82.7		
		2005	4,550	672	14.8	579	86.2		
		2006	4,323	551	12.7	523	94.9		
		2007	4,323	736	17.0	630	85.6		
Spurdog	IIa(EU),IV(EU)	2003	5,640	4,413	78.2	1,177	26.7		
		2004	4,472	3,595	80.4	1,052	29.3		
		2005	1,136	925	81.4	489	52.9		
		2006	691	778	112.6	207	26.6		
		2007	791	640	80.9	128	20.0		
Northern prawns	IIa(EU),IV(EU)	2003	4,880	1,060	21.7	-	-		
		2004	4,880	1,074	22.0	-	-		
		2005	4,880	1,074	22.0	-	-		
		2006	4,980	1,096	22.0	-	-		
		2007	1,064	877	82.4	-	-		
Herring	IVa,b	2003	224,458	56,818	25.3	56,781	99.9		
		2004	260,502	65,220	25.0	64,331	98.6		
		2005	305,557	94,941	31.1	94,648	99.7		
		2006	272,851	69,011	25.3	68,915	99.9		
		2007	204,638	48,541	23.7	48,163	99.2		

Area	Species	Sea area	Year	EU total allowable catch		UK quota		UK uptake			
				After exchanges	% of TAC	Tonnes	% of quota				
North sea	Herring	IVc,VIIId	2003	59,542	4,595	7.7	3,961	86.2			
			2004	66,098	4,481	6.8	4,501	100.4			
			2005	74,293	6,082	8.2	5,861	96.4			
			2006	50,023	5,246	10.5	5,221	99.5			
			2007	37,517	3,874	10.3	3,564	92.0			
			Mackerel	IIa (EU),III(EU),IV	2003	22,063	1,611	7.3	866	53.8	
					2004	21,381	1,707	8.0	1,579	92.5	
	2005	17,067			609	3.6	612	100.5			
	2006	17,621			414	2.3	502	121.3			
	2007	19,677			1,127	5.7	1,027	91.1			
	Horse mackerel	IIa(EU),IV(EU)			2003	41,667	5,124	12.3	1,192	23.3	
					2004	46,788	6,219	13.3	2,554	41.1	
			2005	40,616	2,366	5.8	1,800	76.1			
			2006	40,957	3,917	9.6	2,168	55.3			
			2007	40,983	3,629	8.9	3,625	99.9			
	Blue whiting	I-VIII, XII, XIV	2003	na	na	na	na	na			
			2004	na	na	na	na	na			
			2005	na	na	na	na	na			
			2006	344,063	80,179	23.3	79,577	99.2			
			2007	279,058	55,565	19.9	53,653	96.6			
			Sandeel	IIa(EU),IV(EU)	2003	863,000	17,055	2.0	115	0.7	
					2004	771,200	15,901	2.1	29	0.2	
	2005	655,960			13,525	2.1	-	-			
	2006	-			-	-	-	-			
	2007	152,717			3,774	2.5	1,657	43.9			
	Sandeel	IV (Norway)			2003	131,000	-	-	-	-	
					2004	131,000	6,550	5.0	-	-	
			2005	10,000	500	5.0	-	-			
			2006	-	-	-	-	-			
			2007	20,000	-	-	-	-			
	Pout & blue whiting	IV (ex EC) (Norway)	2003	50,000	2,500	5.0	-	-			
			2004	19,000	2,500	13.2	-	-			
			2005	19,000	950	5.0	-	-			
			2006	19,000	950	5.0	-	-			
			2007	-	-	-	-	-			
	Sprat	IIa(EU),IV(EU)	2003	240,000	9,111	3.8	1,310	14.4			
			2004	238,000	9,035	3.8	1,480	16.4			
			2005	250,000	9,493	3.8	1,605	16.9			
			2006	263,540	4,944	1.9	543	11.0			
			2007	147,028	5,162	3.5	323	6.3			
			West of Scotland	Cod	Vb(EU),VI XII(int'l), XIVb(int'l)	2003	1,808	1,084	60.0	1,025	94.6
						2004	848	508	59.9	506	99.6
2005	721	485				67.3	401	82.7			
2006	613	456				74.4	361	79.2			
2007	490	364				74.3	307	84.3			
Haddock	Vb(EU),VI XII(int'l), XIVb(int'l)	2003				8,675	6,455	74.4	6,378	98.8	
		2004				6,503	5,304	81.6	3,424	64.6	
		2005		8,302	7,081	85.3	3,240	45.8			
		2006		7,810	7,432	95.2	5,381	72.4			
		2007		11,815	9,746	82.5	4,422	45.4			
		Whiting		Vb(EU),VI XII(int'l), XIVb(int'l)	2003	2,000	1,285	64.3	805	62.6	
					2004	1,600	1,032	64.5	459	44.5	
2005	1,600				917	57.3	164	17.9			
2006	1,360				872	64.1	181	20.8			
2007	1,020				672	65.9	426	63.4			
Saithe	Vb(EU),VI XII(int'l), XIVb(int'l)	2003		17,119	3,029	17.7	1,475	48.7			
		2004		19,713	3,488	17.7	1,599	45.8			
		2005		15,044	3,792	25.2	2,009	53.0			
		2006		12,787	4,002	31.3	2,748	68.7			
		2007		12,787	3,953	30.9	1,424	36.0			
Plaice	Vb(EU),VI XII(int'l), XIVb(int'l)	2003		1,534	920	60.0	255	27.7			
		2004		1,227	746	60.8	135	18.1			
		2005		982	597	60.8	59	9.9			
		2006		786	477	60.7	45	9.4			
		2007		786	477	60.7	47	9.9			
Sole	Vb(EU),VI XII(int'l), XIVb(int'l)	2003		106	21	19.8	7	33.3			
		2004		85	17	20.0	4	23.5			
		2005		68	14	20.6	2	13.6			
		2006		68	14	20.6	2	11.4			
		2007		68	14	20.6	3	21.4			
Anglers	Vb(EU),VI XII(int'l), XIVb(int'l)	2003		3,180	1,086	34.2	1,074	98.9			

Table 15. continued

Area	Species	Sea area	Year	EU total allowable catch		UK quota		UK uptake		
				After exchanges	% of TAC	Tonnes	% of quota			
West of Scotland	Herring	Vb(EU), VIa(N), VIb	2003	29,340	17,728	60.4	17,116	96.5		
			2004	29,340	17,776	60.6	17,723	99.7		
			2005	29,440	17,788	60.4	17,439	98.0		
			2006	33,340	18,809	56.4	18,326	97.4		
			2007	33,340	17,758	53.3	17,640	99.3		
			Mackerel	II(excl EU, Ice), Vb(EU), VI, VII, VIII(excl c), XII(intl), XIVb(intl)	2003	310,808	187,596	60.4	182,161	97.1
					2004	297,595	175,164	58.9	173,129	98.8
	2005	217,477			128,690	59.2	127,929	99.4		
	2006	225,837			103,168	45.7	102,537	99.4		
	2007	256,363			132,856	51.8	132,674	99.9		
	Herring	VIa(Clyde)	2003	1,000	1,000	100.0	328	32.8		
			2004	1,000	1,000	100.0	30	3.0		
			2005	1,000	996	99.6	333	33.4		
			2006	800	800	100.0	470	58.8		
			2007	800	800	100.0	598	74.8		
	Horse mackerel	Vb(EU), VI, VII, VIII(excl c), XII(intl), XIVb(intl)	2003	130,000	7,555	5.8	7,095	93.9		
			2004	131,879	10,427	7.9	9,680	92.8		
			2005	133,223	6,598	5.0	6,178	93.6		
			2006	135,257	11,101	8.2	10,507	94.6		
	Blue whiting (inc Biscay)	Vb(EU), VI, VII, VIII(excl c), XII(intl), XIVb(intl)	2003	121,935	29,018	23.8	19,265	66.4		
			2004	209,653	105,130	50.1	59,798	56.9		
			2005	539,006	109,815	20.4	109,102	99.4		
			2006	na	na	-	na	-		
	Hake	Vb(EU), VI, VII, XII(intl), XIVb(intl)	2003	16,823	3,011	17.9	2,401	79.7		
			2004	21,926	3,318	15.1	2,619	78.9		
			2005	23,888	3,896	16.3	3,046	78.2		
			2006	24,617	3,850	15.6	3,086	80.2		
			2007	29,541	5,775	19.5	3,546	61.4		
Area VII	Cod	VIIa	2003	1,950	612	31.4	532	86.9		
			2004	2,150	846	39.3	662	78.3		
			2005	2,150	819	38.1	599	73.1		
			2006	1,828	1,028	56.2	592	57.6		
			2007	1,462	724	49.5	432	59.7		
			Cod	VII(excl a), VIII, IX, X	2003	6,700	547	8.2	482	88.1
					2004	5,700	490	8.6	398	81.2
	2005	6,200			532	8.6	491	92.3		
	2006	5,580			689	12.3	646	93.8		
	2007	4,743			595	12.5	598	100.5		
	Haddock	VII, VIII, IX, X	2003	8,185	789	9.6	672	85.2		
			2004	9,600	847	8.8	743	87.7		
			2005	11,520	1,189	10.3	642	54.0		
			2006	11,520	1,154	10.0	696	60.3		
			2007	11,520	1,216	10.6	941	77.4		
	Whiting	VIIa	2003	500	192	38.4	162	84.4		
			2004	514	199	38.7	86	43.2		
			2005	514	199	38.7	47	23.6		
			2006	437	189	43.2	23	11.9		
			2007	371	163	43.9	5	3.2		
	Whiting	VII(excl a)	2003	31,700	3,302	10.4	879	26.6		
			2004	27,000	2,823	10.5	689	24.4		
			2005	21,600	2,485	11.5	566	22.8		
			2006	19,940	2,289	11.5	484	21.2		
			2007	19,940	2,269	11.4	636	28.0		
	Saithe	VII, VIII, IX, X	2003	8,710	1,337	15.4	364	27.2		
			2004	6,968	1,069	15.3	343	32.1		
			2005	5,574	855	15.3	210	24.6		
			2006	4,738	726	15.3	120	16.5		
			2007	3,790	581	15.3	90	15.5		
	Plaice	VIIa	2003	1,675	478	28.5	419	87.7		
			2004	1,340	464	34.6	372	80.2		
			2005	1,608	590	36.7	422	71.5		
			2006	1,608	707	44.0	412	58.2		
			2007	1,849	708	38.3	412	58.2		
	Plaice	VIIde	2003	5,970	1,790	30.0	1,733	96.8		
			2004	6,060	1,762	29.1	1,482	84.1		
			2005	5,151	1,477	28.7	1,290	87.3		
			2006	5,151	1,644	31.9	1,503	91.4		
			2007	5,050	1,615	32.0	1,135	70.3		
	Plaice	VIIfg	2003	660	155	23.5	127	81.9		
			2004	560	110	19.6	87	79.1		
			2005	476	69	14.5	55	79.7		
			2006	476	119	25.0	87	73.0		
			2007	417	72	17.3	61	85.3		
	Plaice	VIIhjk	2003	582	170	29.2	57	33.5		
			2004	466	72	15.5	36	50.0		
			2005	466	58	12.4	28	48.3		
2006			396	50	12.6	19	37.0			
2007			337	42	12.5	20	47.6			
Sole	VIIa	2003	1,010	238	23.6	220	92.4			
		2004	800	188	23.5	107	56.9			
		2005	960	146	15.2	103	70.5			
		2006	960	226	23.5	70	31.2			
		2007	816	204	25.0	70	34.2			
Sole	VII d	2003	5,400	1,147	21.2	1,113	97.0			
		2004	5,900	1,170	19.8	1,102	94.2			
		2005	5,700	1,170	20.5	558	47.7			
		2006	5,720	1,215	21.2	669	55.1			
		2007	6,220	1,315	21.1	799	60.7			
Sole	VIIe	2003	394	235	59.6	235	100.0			
		2004	300	179	59.7	172	96.1			
		2005	865	511	59.1	506	99.0			
		2006	940	566	60.2	565	99.8			
		2007	900	531	59.0	529	99.6			

Area	Species	Sea area	Year	EU total allowable catch		UK quota		UK uptake		
				After exchanges	% of TAC	Tonnes	% of quota			
Area VII	Sole	VIIfg	2003	1,240	350	28.2	342	97.7		
			2004	1,050	293	27.9	283	96.6		
			2005	1,000	251	25.1	217	86.5		
			2006	950	274	28.8	232	84.6		
			2007	893	272	30.5	245	89.9		
			Sole	VIIhjk	2003	390	80	20.5	78	97.8
					2004	390	80	20.5	79	99.0
	2005	650			141	21.7	112	79.4		
	2006	650			168	25.8	86	51.4		
	2007	650			138	21.2	91	65.9		
	Nephrops	VII	2003	17,790	5,796	32.6	4,782	82.5		
			2004	17,450	5,709	32.7	5,174	90.6		
			2005	19,544	6,507	33.3	5,546	85.2		
			2006	21,498	7,925	36.9	6,609	83.4		
			2007	25,153	9,119	36.3	7,096	77.8		
	Anglers	VII	2003	15,810	3,651	23.1	3,485	95.5		
			2004	20,902	4,074	19.5	3,722	91.4		
			2005	25,082	5,047	20.1	4,774	80.7		
			2006	26,456	4,907	18.5	4,021	81.9		
	Megrin	VII	2003	28,080	5,468	19.5	4,993	91.3		
			2004	14,336	2,265	15.8	1,818	80.3		
			2005	18,099	2,772	15.3	1,705	61.5		
			2006	19,263	3,039	15.8	1,868	61.5		
			2007	18,300	2,918	15.9	1,636	56.1		
	Pollack (Lythe)	VII	2003	18,300	2,916	15.9	1,651	56.6		
			2004	17,000	2,961	17.4	1,750	59.1		
			2005	17,000	2,964	17.4	1,650	55.7		
			2006	17,000	2,964	17.4	1,622	54.7		
2007			15,300	2,658	17.4	1,488	56.0			
Herring	VIIa	2003	15,300	2,665	17.4	1,727	64.8			
		2004	4,800	3,550	74.0	2,736	77.1			
		2005	4,800	2,674	55.7	2,482	92.8			
		2006	4,800	3,640	75.8	3,522	96.8			
		2007	4,800	4,238	88.3	3,822	90.2			
		Herring	VIIe,f	2003	4,800	4,699	97.9	4,630	98.5	
				2004	1,000	500	50.0	335	67.0	
2005	1,000			500	50.0	246	49.2			
2006	1,000			488	48.8	265	54.3			
2007	1,000			500	50.0	222	44.3			
Herring	VIIghjk	2003	13,000	16	0.1	14	87.5			
		2004	13,000	18	0.1	1	5.6			
		2005	13,000	18	0.1	1	5.6			
		2006	11,050	16	0.1	5	31.3			
		2007	9,393	64	0.7	63	98.9			
Sprat	VIIde	2003	9,600	5,040	52.5	1,368	27.1			
		2004	9,600	5,040	52.5	836	16.6			
		2005	7,680	4,032	52.5	1,635	40.6			
		2006	6,144	3,226	52.5	1,974	61.2			
		2007	6,144	3,226	52.5	2,706	83.9			
Norway	Cod	I, II (Norway)	2003	16,353	7,688	47.0	7,470	97.2		
			2004	20,120	7,824	38.9	7,523	96.2		
			2005	19,499	9,140	46.9	8,400	91.9		
			2006	18,920	8,662	45.8	8,053	93.0		
			2007	16,974	7,608	44.8	7,480	98.3		
			Haddock	I, II (Norway)	2003	2,200	1,198	54.5	667	55.7
					2004	2,200	897	40.8	810	90.3
	2005	2,260			1,485	65.7	1,164	78.4		
	2006	2,760			1,405	50.9	1,126	80.1		
	2007	3,000			1,407	46.9	1,464	104.1		
	Saithe	I, II (Norway)	2003	3,600	252	7.0	230	91.3		
			2004	3,600	701	19.5	513	73.2		
			2005	3,600	666	18.5	587	88.1		
			2006	3,600	427	11.9	431	100.9		
			2007	3,950	477	12.1	348	73.0		
	Redfish	I, II (Norway)	2003	1,000	100	10.0	55	55.0		
			2004	1,000	100	10.0	41	41.0		
			2005	1,500	150	10.0	84	56.0		
			2006	1,500	150	10.0	132	88.3		
			2007	1,500	250	16.7	184	73.7		
	Greenland halibut	I, II (Norway)	2003	100	50	50.0	9	18.0		
			2004	100	50					

Table 15. continued

Area	Species	Sea area	Year	EU total allowable catch	UK quota		UK uptake	
					After exchanges	% of TAC	Tonnes	% of quota
Faroes	Cod/haddock	Vb (Faroes)	2003	500	464	92.8	411	88.6
			2004	500	465	93.0	437	94.0
			2005	500	480	96.0	447	93.1
			2006	500	480	96.0	385	80.2
			2007	500	480	96.0	460	95.8
	Saithe	Vb (Faroes)	2003	2,500	767	30.7	676	88.1
			2004	2,500	863	34.5	816	94.6
			2005	2,500	1,069	42.8	1,010	94.5
			2006	2,800	1,216	43.4	1,099	90.4
			2007	2,700	1,016	37.6	408	40.2
	Redfish	Vb (Faroes)	2003	6,300	157	2.5	41	26.1
			2004	6,300	1,867	29.6	140	7.5
			2005	4,000	854	21.4	106	12.4
			2006	3,000	232	7.7	66	28.4
			2007	2,265	44	1.9	9	20.5
	Ling/Blue ling	Vb (Faroes)	2003	3,240	244	7.5	192	78.7
			2004	3,240	444	13.7	284	64.0
			2005	3,240	334	10.3	302	90.4
			2006	3,065	245	8.0	151	61.6
			2007	3,065	224	7.3	165	73.7
	Flatfish	Vb (Faroes)	2003	1,000	680	68.0	201	29.6
2004			1,000	680	68.0	111	16.3	
2005			600	408	68.0	93	22.8	
2006			450	294	65.3	66	22.4	
2007			300	201	67.0	21	10.4	
Other species	Vb (Faroes)	2003	760	180	23.7	140	77.8	
		2004	760	221	29.1	224	101.4	
		2005	760	319	42.0	301	94.4	
		2006	760	345	45.4	315	91.3	
		2007	760	200	26.3	159	79.5	
Blue whiting	Vb (Faroes)	2003	16,000	40	0.3	30	75.0	
		2004	16,000	4,040	25.3	807	20.0	
		2005	16,000	2,806	17.5	2,805	100.0	
		2006	16,000	2,564	16.0	2,564	100.0	
		2007	18,000	4,396	24.4	2,813	64.0	

Source : EU Commission

UK figures are as reported to the EC Commission in 2006. This data, however, is still provisional and does not take into account flexibility arrangements, or small adjustments required to UK landings abroad by other member states.

Area	Species	Sea area	Year	EU total allowable catch	UK quota		UK uptake	
					After exchanges	% of TAC	Tonnes	% of quota
Greenland	Redfish	V, XIV (Greenland)	2003	25,500	600	2.4	271	45.2
			2004	25,500	338	1.3	338	100.0
			2005	15,938	284	1.8	108	38.0
			2006	13,229	66	0.5	-	-
	2007	6,049	42	0.7	8	19.0		
	Greenland halibut	V, XIV (Greenland)	2003	4,800	714	14.9	634	88.8
			2004	4,800	1,615	33.6	1,572	97.3
2005			6,300	271	4.3	272	100.4	
Iceland	Redfish	Va (Iceland)	2003	3,000	1,410	47.0	1,400	99.3
			2004	3,000	1,710	57.0	972	56.8
			2005	3,000	1,625	54.2	1,125	69.2
			2006	1,160	1,160	100.0	400	34.5
			2007	3,000	1,160	38.7	297	25.6

Chart 6. UK percentage uptake of main quota stocks, 2007

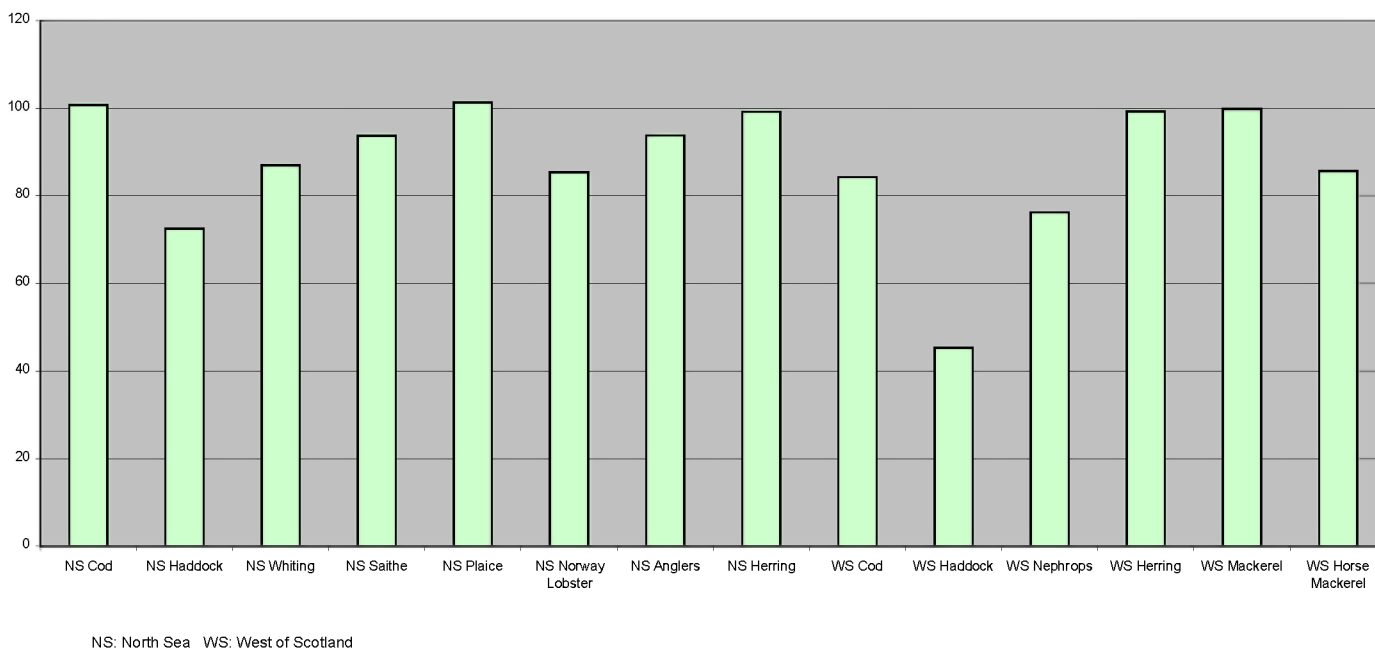


Table 16. Fixed quota units (thousands), by sea area and country, 1st January 2008

	North Sea (1)			West of Scotland (2)			Area VII		
	Scottish vessels	Other UK vessels	Held in PO (3) pools	Scottish vessels	Other UK vessels	Held in PO (3) pools	Scottish vessels	Other UK vessels	Held in PO (3) pools
Demersal	1,073	329	1,006	248	124	231	18	163	82
Pelagic	577	193	29	2,646	901	58	37	353	164
Shellfish	58	14	59	40	14	59	3	36	20
Total	1,708	536	1,094	2,933	1,038	349	58	552	267

(1) includes southern North Sea herring (2) includes western hake (3) Producer Organisations

Table 17. Live weight and value of landings by species type, 2003 to 2007

		Tonnes (thousand)					Value (£ million) (1)					Value (£ million) (2007 prices)						
		2003	2004	2005	2006	2007	2003	2004	2005	2006	2007	2003	2004	2005	2006	2007		
Landings by UK vessels into:	Scotland	Demersal	93.3	93.2	94.6	88.0	79.9	92.9	96.2	108.3	120.5	113.8	103.1	103.9	114.5	124.0	113.8	
		Pelagic	163.3	191.6	217.2	144.0	165.3	48.9	63.2	91.9	65.5	75.3	54.3	68.2	97.1	67.4	75.3	
		Shellfish	49.0	52.5	54.5	57.3	65.9	89.6	99.2	108.5	137.7	159.2	99.4	107.1	114.7	141.7	159.2	
		Total	305.6	337.2	366.3	289.2	311.1	231.4	258.6	308.7	323.7	348.3	256.8	279.3	326.4	333.1	348.3	
		Rest of UK	Demersal	40.2	37.8	34.4	31.3	33.1	74.4	66.4	64.3	62.4	66.7	82.5	71.7	68.0	64.2	66.7
			Pelagic	18.4	12.9	21.0	19.9	21.2	4.9	4.8	7.8	8.3	8.8	5.5	5.2	8.2	8.6	8.8
Shellfish	80.3		73.6	70.0	76.1	74.4	80.9	74.0	75.2	99.4	112.0	89.7	79.9	79.5	102.3	112.0		
Total	139.0		124.3	125.4	127.3	128.7	160.2	145.2	147.3	170.1	187.5	177.7	156.8	155.7	175.1	187.5		
Landings by foreign vessels into:	Scotland	Demersal	37.8	36.3	30.0	25.9	26.6	45.1	44.8	42.3	36.9	29.2	50.0	48.4	44.7	38.0	29.2	
		Pelagic	35.1	38.6	44.2	69.1	63.4	6.3	9.1	18.6	28.1	23.2	7.0	9.8	19.7	28.9	23.2	
		Shellfish	0.2	0.3	0.5	0.7	0.8	0.3	0.5	0.6	1.9	2.4	0.3	0.5	0.6	2.0	2.4	
		Total	73.1	75.2	74.7	95.7	90.7	51.7	54.4	61.6	66.9	54.7	57.4	58.7	65.1	68.9	54.7	
		Rest of UK	Demersal	30.4	45.4	70.7	30.3	16.4	34.4	53.6	100.8	39.3	28.3	38.2	57.9	106.6	40.5	28.3
			Pelagic	0.6	0.0	0.4	0.6	1.5	0.2	0.0	0.3	0.1	1.1	0.2	0.0	0.3	0.1	1.1
Shellfish	2.0		1.6	1.3	1.2	1.2	2.9	2.6	1.7	1.7	1.7	3.2	2.8	1.8	1.8	1.7		
Total	32.9		47.0	72.4	32.2	19.1	37.5	56.2	102.7	41.2	31.1	41.6	60.7	108.6	42.4	31.1		
Landings by UK vessels into UK	All landings into UK	Demersal	133.5	131.0	129.0	119.3	113.1	167.3	162.6	172.6	182.9	180.5	185.6	175.6	182.5	188.2	180.5	
		Pelagic	181.7	204.5	238.2	163.9	186.5	53.8	68.0	99.7	73.8	84.1	59.7	73.4	105.3	76.0	84.1	
		Shellfish	129.3	126.1	124.5	133.4	140.3	170.5	173.2	183.8	237.1	271.2	189.2	187.0	194.3	244.0	271.2	
		Total	444.6	461.5	491.7	416.5	439.8	391.6	403.7	456.0	493.8	535.7	434.5	435.9	482.1	508.2	535.7	
		Demersal	201.7	212.7	229.7	175.6	156.0	246.8	261.0	315.7	259.1	238.0	273.9	281.8	333.7	266.6	238.0	
		Total	217.4	243.1	282.8	233.6	251.3	60.3	77.1	118.6	102.1	108.3	67.0	83.3	125.3	105.0	108.3	
Landings by UK vessels into Scotland as per cent of landings by UK vessels into UK	Landings into Scotland as per cent of landings into UK	Demersal	131.5	128.0	126.3	135.3	142.2	173.7	176.3	186.1	240.8	275.3	192.7	190.4	196.7	247.8	275.3	
		Pelagic	550.6	583.7	638.8	544.4	549.6	480.8	514.4	620.3	601.9	621.6	533.5	555.5	655.8	619.5	621.6	
		Shellfish	69.9	71.1	73.3	73.7	70.7	55.5	59.2	62.7	65.9	63.1	89.9	93.7	91.2	87.9	88.6	
		Total	89.9	93.7	91.2	87.9	86.6	90.8	92.9	92.2	88.7	89.5	37.9	41.6	43.8	42.9	47.0	
		Demersal	68.7	73.1	74.5	69.4	70.7	59.1	64.1	67.7	65.5	65.0	65.0	60.9	54.2	64.9	68.3	
		Total	65.0	60.9	54.2	64.9	68.3	55.9	54.0	47.7	60.8	60.1	91.3	94.7	92.4	91.2	91.0	
Scottish based vessels	- landings into UK	Demersal	89.2	88.1	88.3	82.9	76.7	91.2	89.7	101.6	115.0	110.5	101.2	96.9	107.4	118.3	110.5	
		Pelagic	163.3	191.9	216.9	141.0	156.6	49.2	63.2	91.9	64.5	71.4	54.6	68.2	97.1	66.3	71.4	
		Shellfish	50.5	54.1	54.7	58.6	66.4	91.6	101.5	110.0	138.9	161.2	101.6	109.6	116.3	143.0	161.2	
		Total	303.1	334.1	359.9	282.5	299.7	232.0	254.4	303.4	318.4	343.1	257.4	274.7	320.8	327.6	343.1	
		- landings abroad	Demersal	10.4	13.1	11.4	11.2	12.5	18.0	21.7	21.4	21.4	19.3	20.0	23.4	22.7	22.0	19.3
			Pelagic	77.6	79.4	111.2	84.8	56.8	28.6	22.0	22.5	27.1	19.2	31.7	23.8	23.8	27.9	19.2
Shellfish	0.4		0.8	0.6	0.8	0.5	0.9	2.1	1.8	1.6	1.5	1.0	2.3	1.9	1.6	1.5		
Total	88.4		93.3	123.2	98.8	69.8	47.5	45.9	45.6	50.1	40.0	52.7	49.6	48.3	51.6	40.0		
Other UK based vessels	- landings into UK	Demersal	44.3	42.9	40.6	36.4	36.4	76.1	72.9	71.0	67.9	70.0	84.4	78.7	75.1	69.9	70.0	
		Pelagic	18.4	12.6	21.4	22.9	29.8	4.6	4.8	7.8	9.4	12.6	5.2	5.2	8.2	9.6	12.6	
		Shellfish	78.8	72.0	69.8	74.8	73.9	78.9	71.7	73.8	98.2	110.0	87.5	77.4	78.0	101.0	110.0	
		Total	141.5	127.4	131.8	134.1	140.1	159.6	149.3	152.6	175.5	192.6	177.1	161.2	161.3	180.6	192.6	
		- landings abroad	Demersal	28.3	28.6	24.6	24.0	22.5	34.4	33.7	35.0	29.5	30.7	38.1	36.4	37.0	30.4	30.7
			Pelagic	62.2	65.4	60.7	73.2	73.3	32.5	19.3	21.2	31.5	31.3	36.1	20.8	22.4	32.4	31.3
Shellfish	7.9		4.9	7.7	3.8	5.0	14.6	8.6	13.3	5.3	7.9	16.2	9.3	14.1	5.5	7.9		
Total	98.4		98.9	92.9	100.9	100.8	81.5	61.7	69.5	66.4	69.9	90.4	66.6	73.5	68.3	69.9		
Landings by UK vessels	Total	Demersal	172.2	172.7	164.9	154.4	148.1	219.6	218.0	229.0	233.8	230.4	243.7	235.4	242.1	240.6	230.4	
		Pelagic	321.5	349.3	410.1	321.9	316.6	115.0	109.3	143.3	132.5	134.6	127.6	118.0	151.5	136.4	134.6	
		Shellfish	137.6	131.8	132.8	137.9	145.8	185.9	183.9	198.9	244.0	280.6	206.3	198.6	210.3	251.1	280.6	
		Total	631.4	653.7	707.8	614.2	610.4	520.5	511.3	571.2	610.3	645.7	577.6	552.1	603.8	628.1	645.7	
		Percent landed by Scottish based vessels	Demersal	57.8	58.6	60.5	60.9	60.3	49.7	51.1	53.7	58.3	56.3	74.9	77.7	80.0	70.2	67.4
			Pelagic	74.9	77.7	80.0	70.2	67.4	67.7	78.0	79.8	69.1	67.3	37.0	41.7	41.6	43.0	45.9
Shellfish	37.0		41.7	41.6	43.0	45.9	49.8	56.3	56.2	57.6	58.0	62.0	65.4	68.2	61.7	60.5		
Total	62.0	65.4	68.2	61.7	60.5	53.7	58.7	61.1	60.4	59.3								

Table 18. Voyages and landings by Scottish based vessels by landing district, 2006 and 2007

Voyages ending in district:	2006			2007		
	Number	Tonnes	Value (£000)	Number	Tonnes	Value (£000)
Eyemouth	7,912	2,788	6,271	6,156	2,545	6,361
Pittenweem	4,708	1,647	3,973	5,093	1,824	4,617
Aberdeen	2,266	16,296	13,635	2,471	10,817	11,119
Peterhead	2,498	101,866	83,424	2,664	110,181	89,851
Fraserburgh	5,093	29,382	51,732	5,834	27,761	52,120
Buckie	1,935	1,520	3,214	2,104	1,441	3,240
Wick	2,309	10,152	14,452	2,803	9,825	15,992
Orkney	3,656	3,136	5,365	3,478	3,177	5,742
Shetland	3,325	73,466	46,749	4,458	85,604	56,533
Stornoway	8,696	4,214	12,745	8,880	4,187	11,669
Lochinver	1,777	3,457	8,821	1,756	4,089	7,864
Kinlochbervie	901	4,561	7,459	674	4,359	7,362
Ullapool	2,659	5,172	9,201	2,965	3,837	7,268
Mallaig	3,037	3,787	8,740	2,854	4,214	10,206
Oban	4,106	2,816	6,802	4,126	3,327	8,483
Campbeltown	9,605	4,315	9,354	9,603	5,650	12,899
Ayr	5,530	4,724	7,974	6,159	7,189	9,472
Portree	7,129	2,305	7,777	7,745	2,405	8,524
Other UK	2,278	6,858	10,670	1,861	7,291	13,804
Denmark	47	45,244	8,170	74	32,244	8,706
Eire	78	5,580	2,465	44	4,456	1,882
Netherlands	509	6,934	13,141	465	6,219	12,172
Norway	37	21,978	15,219	43	20,909	10,457
Spain	146	2,176	6,030	128	2,006	4,306
Other foreign ports	60	14,843	5,109	72	3,940	2,494
Total	80,297	379,218	368,495	82,510	369,495	383,144

(1) When the Register of Buyers and Sellers (RBS) was introduced in September 2005, Sales Notes were not initially required for sales of shellfish and information on the value of such landings is consequently missing. The value has therefore been estimated for a number of landings, mostly shellfish, relating to voyages starting on or after 1 September 2005.

Table 19. Liveweight and value of landings into the UK by UK vessels , by main species (over £5m value in 2007) and country of landing, 2003 to 2007

		Tonnes (thousand)					Value (£ million) (1)				
		2003	2004	2005	2006	2007	2003	2004	2005	2006	2007
UK vessels into: Scotland	Cod	9.0	7.2	7.3	7.3	7.1	14.0	12.4	13.0	14.0	14.6
	Haddock	37.9	42.7	45.3	37.4	29.5	25.3	30.4	36.7	43.8	37.6
	Megrims	2.2	2.0	1.8	1.9	2.3	4.4	4.0	3.8	4.6	5.3
	Monks	7.2	7.8	9.6	9.3	10.3	14.8	16.4	23.9	25.0	25.5
	Whiting	6.5	5.5	5.8	8.3	9.4	4.2	4.0	4.2	7.5	9.2
	Herring	51.9	53.5	71.4	57.1	45.2	6.4	6.5	14.4	13.2	8.4
	Mackerel	98.5	110.8	116.0	64.6	95.8	41.5	55.1	75.9	50.4	63.7
	Edible crabs	7.2	6.9	8.2	9.8	11.4	8.0	7.4	9.1	12.0	13.9
	Velvet crabs	1.5	2.3	1.8	2.6	2.9	2.4	3.1	3.0	4.8	5.9
	Lobsters	0.3	0.4	0.4	0.7	0.9	3.4	4.4	4.5	7.6	9.8
	Nephrops	20.6	22.9	25.2	29.6	33.8	52.0	57.2	67.9	89.3	104.3
	Scallops	10.1	11.5	9.8	8.6	8.9	15.7	18.3	15.7	17.8	18.2
Other	52.8	63.7	63.6	52.1	53.7	39.4	39.4	36.5	33.7	31.8	
	Total	305.6	337.2	366.3	289.2	311.1	231.4	258.6	308.7	323.7	348.3
England and Wales	Cod	6.1	7.4	5.9	5.0	5.2	8.0	9.2	7.8	5.5	6.1
	Dover sole	2.2	2.0	1.8	1.9	2.1	13.9	12.8	12.4	14.6	15.4
	Monks	2.7	2.8	2.8	2.8	3.4	5.7	6.0	6.4	6.7	8.3
	Edible crabs	12.7	10.5	8.0	9.8	10.6	13.1	11.3	9.9	13.2	14.4
	Cockles	26.8	12.8	13.1	11.1	11.1	16.9	10.0	8.0	5.0	7.2
	Cuttlefish	5.1	5.0	3.0	3.6	4.4	4.2	4.1	3.0	5.2	5.5
	Lobsters	1.0	0.9	0.9	1.6	1.8	9.3	8.0	7.6	18.5	20.8
	Nephrops	2.7	2.8	3.9	5.5	4.1	5.3	5.9	8.4	13.8	10.5
	Scallops	8.6	8.9	10.4	10.1	11.5	12.7	12.7	16.4	15.4	20.0
	Whelks	8.4	10.6	10.2	11.2	12.4	4.1	5.8	6.2	6.5	7.4
	Other	44.5	46.6	50.4	47.2	44.3	51.3	44.9	46.6	45.3	52.1
		Total	120.7	110.5	110.4	109.6	110.9	144.5	130.8	132.5	149.8
Northern Ireland	Nephrops	4.4	4.7	4.7	5.9	6.2	6.7	7.2	7.8	11.0	11.7
	Other	13.8	9.1	10.3	11.7	11.6	9.0	7.1	7.0	9.2	8.0
	Total	18.2	13.8	15.0	17.6	17.8	15.7	14.3	14.7	20.2	19.7
UK	Cod	15.5	15.2	13.8	12.9	12.8	22.7	22.7	21.8	20.8	21.7
	Dover sole	2.3	2.0	1.8	1.9	2.1	14.1	12.9	12.5	15.0	15.8
	Haddock	40.7	45.4	47.6	38.9	32.3	27.5	32.7	38.7	45.2	39.9
	Lemon sole	2.2	2.1	2.1	2.0	2.0	6.7	6.0	6.4	6.1	6.4
	Megrims	3.6	3.4	3.3	3.0	3.4	8.2	7.7	8.3	8.2	8.5
	Monks	10.1	10.8	12.6	12.2	13.8	20.8	22.7	30.6	32.0	34.1
	Whiting	8.2	7.4	8.9	12.1	13.1	5.1	5.0	5.7	9.8	11.8
	Herring	55.2	56.2	76.4	62.1	50.7	7.0	7.6	15.9	14.5	9.5
	Mackerel	106.5	115.3	120.6	70.4	100.3	44.6	57.0	78.3	54.9	67.1
	Cockles	26.8	12.9	13.2	11.3	11.3	16.9	10.1	8.1	5.3	7.4
	Edible crabs	20.5	17.9	16.6	20.4	23.2	21.5	19.0	19.2	25.8	29.3
	Velvet crabs	1.9	2.8	2.3	3.8	3.7	2.9	3.7	3.7	6.4	7.1
	Cuttlefish	5.1	5.0	3.0	3.6	4.4	4.2	4.1	3.0	5.2	5.5
	Lobsters	1.3	1.4	1.3	2.3	2.8	12.8	12.6	12.2	26.6	31.2
	Nephrops	27.6	30.4	33.8	41.0	44.1	64.0	70.3	84.0	114.2	126.5
	Scallops	19.2	21.1	20.6	19.0	20.8	29.1	31.8	32.7	33.7	38.8
	Squid	3.0	2.8	2.6	1.3	1.8	6.8	7.7	6.3	3.8	5.9
	Whelks	9.3	12.1	11.2	12.0	13.0	4.5	6.6	6.7	7.1	7.8
	Other	85.7	97.4	100.0	86.3	84.2	72.2	63.3	61.7	59.1	61.4
	Total	444.6	461.5	491.7	416.5	439.8	391.6	403.7	456.0	493.8	535.7

Table 20. Liveweight and value of landings into Scotland by UK vessels, by main species (value of £2.0m in 2007) 2003 to 2007

	Tonnes					Value (£ 000) (1)					£ per tonne (live weight)				
	2003	2004	2005	2006	2007	2003	2004	2005	2006	2007	2003	2004	2005	2006	2007
Cod	8,955	7,178	7,323	7,292	7,115	13,969	12,373	13,008	14,017	14,649	1,560	1,724	1,776	1,922	2,059
Haddock	37,862	42,696	45,282	37,392	29,509	25,266	30,432	36,747	43,764	37,579	667	713	812	1,170	1,273
Hake	525	947	1,530	1,846	2,154	1,150	2,060	4,069	4,992	3,013	2,190	2,176	2,659	2,705	1,398
Lemon sole	819	671	878	879	946	1,807	2,065	2,035	2,147	2,416	2,205	3,076	2,317	2,442	2,554
Ling	3,825	3,760	2,948	2,616	2,511	4,074	3,939	3,239	3,137	3,084	1,065	1,048	1,099	1,199	1,228
Megrims	2,174	1,962	1,842	1,863	2,283	4,418	4,018	3,812	4,619	5,283	2,032	2,048	2,069	2,480	2,315
Monks	7,248	7,807	9,628	9,309	10,255	14,761	16,371	23,946	25,028	25,524	2,037	2,097	2,487	2,689	2,489
Saithe	7,600	8,137	10,551	11,497	9,545	3,105	3,317	4,876	5,809	4,659	409	408	462	505	488
Whiting	6,516	5,472	5,753	8,271	9,393	4,228	3,957	4,199	7,473	9,189	649	723	730	903	978
Other demersal	17,783	14,542	8,844	6,991	6,236	20,080	17,660	12,364	9,529	8,392	1,129	1,214	1,398	1,363	1,346
Total demersal	93,306	93,174	94,579	87,956	79,946	92,856	96,193	108,295	120,515	113,787	995	1,032	1,145	1,370	1,423
Blue whiting	9,728	24,819	28,767	21,381	21,886	670	1,339	1,367	1,799	2,686	69	54	48	84	123
Herring	51,909	53,510	71,385	57,081	45,158	6,401	6,519	14,446	13,164	8,387	123	122	202	231	186
Mackerel	98,496	110,757	115,970	64,590	95,788	41,474	55,065	75,939	50,403	63,749	421	497	655	780	666
Other pelagic	3,211	2,469	1,084	937	2,419	375	266	144	136	452	117	108	133	145	187
Total pelagic	163,344	191,555	217,205	143,989	165,250	48,920	63,189	91,895	65,502	75,274	299	330	423	455	456
Edible crabs	7,240	6,937	8,248	9,795	11,439	7,995	7,401	9,106	12,030	13,855	1,104	1,067	1,104	1,228	1,211
Lobsters	301	425	414	710	894	3,352	4,385	4,467	7,595	9,837	11,150	10,317	10,791	10,701	11,002
Nephrops	20,589	22,920	25,199	29,616	33,782	52,047	57,209	67,872	89,288	104,321	2,528	2,496	2,693	3,015	3,088
Scallops	10,055	11,538	9,777	8,600	8,862	15,701	18,324	15,720	17,825	18,247	1,562	1,588	1,608	2,073	2,059
Squid	2,214	2,125	1,898	871	1,193	4,826	5,276	4,182	2,239	3,275	2,180	2,482	2,203	2,572	2,746
Velvet crabs	1,517	2,298	1,802	2,593	2,946	2,379	3,116	2,995	4,757	5,852	1,568	1,356	1,662	1,835	1,986
Other shellfish	7,074	6,269	7,138	5,096	6,766	3,348	3,478	4,204	3,932	3,803	473	555	589	772	562
Total shellfish	48,990	52,513	54,476	57,280	65,882	89,647	99,189	108,545	137,666	159,190	1,830	1,889	1,993	2,403	2,416
Total landings	305,640	337,242	366,260	289,226	311,078	231,423	258,571	308,736	323,684	348,252	757	767	843	1,119	1,120

(1) When the Register of Buyers and Sellers (RBS) was introduced in September 2005, Sales Notes were not initially required for sales of shellfish and information on the value of such landings is consequently missing. The value has therefore been estimated for a number of landings, mostly shellfish, relating to voyages starting on or after 1 September 2005.

Table 21. Liveweight and value (£) of landings into Scottish ports by UK vessels, by landing district and species type, 2003 to 2007

		2003		2004		2005		2006		2007	
		Tonnes	Value (£000)	Tonnes	Value (£000)	Tonnes	Value (£000)	Tonnes	Value (£000)	Tonnes	Value (£000)
Eyemouth	Demersal	1,882	1,917	2,472	2,181	1,776	1,853	1,123	1,484	437	489
	Pelagic	-	-	1	1	0	0	0	0	17	10
	Shellfish	1,002	2,535	1,295	3,090	1,235	3,248	1,965	5,644	2,403	6,574
	Total	2,884	4,452	3,768	5,271	3,010	5,101	3,088	7,128	2,858	7,072
Pittenweem	Demersal	24	19	103	125	5	5	16	25	7	10
	Pelagic	0	0	0	0	0	0	-	-	1	1
	Shellfish	892	1,887	1,313	2,615	1,444	3,301	1,631	3,950	1,824	4,642
	Total	916	1,905	1,416	2,740	1,449	3,306	1,648	3,975	1,832	4,653
Aberdeen	Demersal	12,463	10,670	12,494	10,169	11,573	10,934	6,717	8,370	3,311	4,563
	Pelagic	4	1	6,623	353	11,668	587	7,799	671	5,080	638
	Shellfish	1,557	2,863	2,695	4,933	1,922	3,663	2,194	5,152	2,927	6,755
	Total	14,023	13,535	21,812	15,455	25,164	15,184	16,710	14,193	11,318	11,956
Peterhead	Demersal	26,406	26,031	29,018	29,112	35,659	37,150	35,541	45,144	35,549	48,070
	Pelagic	61,559	20,020	82,007	28,353	79,058	37,114	66,986	32,879	79,057	36,097
	Shellfish	1,996	5,138	2,675	6,224	2,773	6,891	2,472	7,371	2,802	9,917
	Total	89,961	51,189	113,700	63,689	117,490	81,154	104,998	85,393	117,408	94,083
Fraserburgh	Demersal	11,794	9,379	12,156	9,880	12,475	13,012	11,299	14,577	8,917	11,921
	Pelagic	24,881	6,738	21,291	7,610	23,275	12,876	7,367	5,776	7,178	4,244
	Shellfish	7,320	15,059	9,222	19,485	10,955	26,219	11,462	33,058	12,659	38,517
	Total	43,994	31,176	42,670	36,975	46,705	52,107	30,129	53,411	28,755	54,683
Buckie	Demersal	1,483	1,595	887	946	667	894	368	598	219	404
	Pelagic	8	3	4	1	3	1	-	-	1	0
	Shellfish	1,663	3,094	1,980	3,844	1,919	3,975	1,338	2,912	1,245	2,881
	Total	3,154	4,692	2,871	4,791	2,589	4,870	1,706	3,509	1,465	3,285
Wick	Demersal	11,818	12,783	10,657	12,429	10,067	12,121	8,429	11,267	6,959	11,138
	Pelagic	6	1	12	5	12	5	0	1	0	0
	Shellfish	4,835	5,930	5,458	5,768	5,188	6,071	5,135	6,742	5,274	7,585
	Total	16,659	18,715	16,127	18,201	15,267	18,197	13,564	18,009	12,233	18,723
Orkney	Demersal	30	14	50	21	30	31	51	51	7	6
	Pelagic	1	0	1	0	3	3	8	10	8	4
	Shellfish	2,347	3,239	3,375	4,713	3,608	5,349	3,079	5,306	3,192	5,761
	Total	2,377	3,254	3,426	4,734	3,642	5,382	3,137	5,367	3,207	5,771
Shetland	Demersal	7,612	7,047	9,018	9,042	9,664	11,569	11,514	16,520	12,814	19,065
	Pelagic	73,986	21,828	80,005	26,619	102,191	41,165	61,614	26,016	73,578	34,133
	Shellfish	1,069	1,523	1,137	1,706	1,059	1,928	1,740	4,838	1,870	4,502
	Total	82,667	30,398	90,159	37,366	112,914	54,663	74,868	47,374	88,261	57,699
Stornoway	Demersal	530	337	318	242	172	169	125	250	142	168
	Pelagic	-	-	-	-	0	0	4	4	1	0
	Shellfish	3,670	8,331	3,705	9,127	3,465	8,627	4,089	12,501	4,056	11,526
	Total	4,199	8,668	4,022	9,370	3,637	8,796	4,218	12,754	4,199	11,695
Lochinver	Demersal	4,009	5,262	3,623	5,748	2,525	5,902	2,472	6,210	3,129	5,084
	Pelagic	6	3	-	-	-	-	-	-	9	6
	Shellfish	1,040	3,136	861	2,647	707	1,967	985	2,611	1,059	2,822
	Total	5,055	8,401	4,484	8,395	3,232	7,869	3,457	8,821	4,197	7,912
Kinlochbervie	Demersal	6,357	7,679	5,606	6,671	4,364	6,507	4,197	6,534	4,017	6,495
	Pelagic	37	9	2	0	8	2	7	1	-	-
	Shellfish	685	1,379	464	1,029	369	785	495	1,088	385	927
	Total	7,079	9,066	6,072	7,699	4,741	7,294	4,699	7,624	4,402	7,423
Ullapool	Demersal	5,122	6,239	4,061	6,636	3,770	5,902	4,363	6,829	2,838	4,274
	Pelagic	28	11	168	65	33	18	203	144	125	77
	Shellfish	1,706	3,861	1,484	3,476	1,417	3,741	1,945	4,794	2,031	4,786
	Total	6,856	10,111	5,713	10,178	5,220	9,661	6,511	11,767	4,994	9,136
Mallaig	Demersal	1,847	1,551	1,541	1,381	924	989	996	1,404	1,130	1,431
	Pelagic	2,543	280	1,440	182	953	126	0	0	6	1
	Shellfish	3,130	5,964	2,944	5,849	2,754	5,784	3,010	7,820	3,301	9,185
	Total	7,520	7,795	5,925	7,412	4,632	6,899	4,007	9,225	4,437	10,617
Oban	Demersal	255	201	136	159	299	390	84	131	105	130
	Pelagic	-	-	-	-	-	-	0	0	-	-
	Shellfish	3,438	6,447	3,185	6,181	3,047	5,843	3,032	7,170	3,429	8,788
	Total	3,693	6,647	3,320	6,340	3,346	6,233	3,116	7,301	3,535	8,919
Campbeltown	Demersal	159	116	98	72	68	61	81	95	172	179
	Pelagic	273	25	0	0	0	0	0	0	165	28
	Shellfish	3,992	7,153	5,063	7,551	4,454	8,439	5,017	10,620	6,769	15,080
	Total	4,424	7,294	5,162	7,624	4,523	8,501	5,098	10,715	7,107	15,286
Ayr	Demersal	850	1,319	751	1,156	476	714	481	895	172	329
	Pelagic	12	1	0	0	1	2	0	0	24	36
	Shellfish	6,628	5,721	3,911	4,761	6,084	6,439	5,486	8,445	8,269	10,450
	Total	7,490	7,041	4,663	5,916	6,561	7,155	5,967	9,340	8,465	10,815
Portree	Demersal	667	697	187	223	65	89	101	133	19	31
	Pelagic	1	0	-	-	-	-	-	-	-	-
	Shellfish	2,020	6,387	1,747	6,191	2,075	6,275	2,204	7,645	2,386	8,494
	Total	2,687	7,084	1,934	6,414	2,140	6,364	2,305	7,777	2,405	8,524
Total	Demersal	93,306	92,856	93,174	96,192	94,579	108,293	87,956	120,515	79,946	113,787
	Pelagic	163,344	48,920	191,555	63,189	217,206	91,897	143,989	65,502	165,250	75,274
	Shellfish	48,990	89,647	52,513	99,189	54,476	108,545	57,280	137,666	65,882	159,190
	Total	305,640	231,424	337,242	258,571	366,260	308,736	289,226	323,684	311,078	348,252

(1) When the Register of Buyers and Sellers (RBS) was introduced in September 2005, Sales Notes were not initially required for sales of shellfish and information on the value of such landings is consequently missing. The value has therefore been estimated for a number of landings, mostly shellfish, relating to voyages starting on or after 1 September 2005.

Table 22. Disposal of sea fish landed (1) into Scotland by UK vessels, 2003 to 2007

	Demersal					Pelagic					Shellfish				
	2003	2004	2005	2006	2007	2003	2004	2005	2006	2007	2003	2004	2005	2006	2007
Human consumption	90.7	91.1	94.0	87.6	79.5	154.6	169.6	187.5	122.4	150.3	49.0	52.5	54.5	57.3	65.9
Klondyked	-	0.0	0.0	-	0.0	-	0.0	0.0	-	-	-	0.0	-	0.0	0.0
Meal and oil	2.4	1.9	0.5	0.3	0.4	8.2	22.0	29.3	21.6	15.0	-	0.0	0.0	0.0	0.0
Dumped/ bait	0.1	0.1	0.1	0.1	0.1	0.4	0.0	0.1	-	-	-	0.0	0.0	-	0.0
Other	-	0.0	0.0	0.0	0.0	0.2	-	0.2	-	0.0	-	0.0	0.0	0.0	0.0
Total	93.3	93.2	94.6	88.0	79.9	163.3	191.6	217.2	144.0	165.3	49.0	52.5	54.5	57.3	65.9

(1) '000 tonnes

Table 23. Liveweight and value (£) of landings into Scotland by UK vessels, by landing district and main species, 2007

	Eyemouth	
	Tonnes	£'000
Cod	21	25
Haddock	214	238
Lemon sole	25	58
Whiting	123	91
Other demersal	54	77
Total demersal	437	489
Total pelagic	17	10
Edible crabs	149	200
Lobsters	98	1060
Nephrops	1,835	4,700
Scallops	112	200
Squid	78	210
Velvet crabs	109	190
Whelks	21	9
Other shellfish	0	4
Total shellfish	2,403	6,574
Total landings	2,858	7,072

	Pittenweem	
	Tonnes	£'000
Total demersal	7	10
Total pelagic	1	1
Edible crabs	134	152
Lobsters	84	934
Nephrops	1,274	2,891
Scallops	42	77
Squid	112	324
Surf clams	60	65
Velvet crabs	94	157
Other shellfish	25	43
Total shellfish	1,824	4,642
Total landings	1,832	4,653

	Aberdeen	
	Tonnes	£'000
Cod	272	525
Haddock	1,929	2,586
Hake	63	88
Lemon sole	107	303
Ling	30	30
Monks	77	184
Plaice	65	59
Pollack	99	114
Saithe	196	92
Whiting	392	394
Other demersal	82	188
Total demersal	3,311	4,563
Blue whiting	5,076	637
Other pelagic	4	1
Total pelagic	5,080	638
Edible crabs	255	293
Lobsters	83	881
Nephrops	289	1,006
Scallops	2,094	4,149
Squid	35	119
Velvet crabs	169	303
Other shellfish	2	4
Total shellfish	2,927	6,755
Total landings	11,318	11,956

	Peterhead	
	Tonnes	£'000
Blue ling	31	38
Catfish	142	225
Cod	3,562	7,558
Dogfish spur	63	47
Haddock	16,529	21,257
Hake	706	923
Halibut	107	565
Lemon sole	500	1,321
Ling	691	854
Megrimms	423	979
Monks	2,127	5,298
Plaice	221	222
Pollack	612	854
Redfish	102	95
Roes	30	71
Saithe	4,842	2,462
Skates & rays	66	54
Tusk	53	49
Whiting	4,424	4,658
Witches	189	263
Other demersal	129	278
Total demersal	35,549	48,070
Anchovy - European	181	18
Blue whiting	7,573	922
Herring	23,178	4,461
Horse mackerel	1,354	334
Mackerel	46,581	30,351
Pilchard	114	3
Sprats	73	7
Total pelagic	79,057	36,097
Edible crabs	74	86
Nephrops	2,259	8,808
Scallops	283	504
Squid	157	432
Velvet crabs	24	41
Other shellfish	6	46
Total shellfish	2,802	9,917
Total landings	117,408	94,083

	Fraserburgh	
	Tonnes	£'000
Cod	591	1,026
Dogfish spur	22	16
Haddock	2,385	2,498
Hake	92	63
Halibut	65	386
Lemon sole	200	457
Ling	185	221
Megrimms	341	710
Monks	1,672	4,099
Plaice	173	119
Saithe	684	290
Skates & rays	33	19
Whiting	1,978	1,404
Witches	365	383
Other demersal	132	230
Total demersal	8,917	11,921
Herring	299	48
Mackerel	6,866	4,189
Other pelagic	14	7
Total pelagic	7,178	4,244
Edible crabs	345	469
Nephrops	11,252	35,541
Scallops	630	1,325
Squid	372	1,023
Velvet crabs	43	61
Other shellfish	18	99
Total shellfish	12,659	38,517
Total landings	28,755	54,683

	Buckie	
	Tonnes	£'000
Cod	39	72
Haddock	34	39
Monks	74	187
Other demersal	73	106
Total demersal	219	404
Total pelagic	1	0
Edible crabs	52	59
Nephrops	542	1,411
Scallops	346	643
Squid	220	594
Velvet crabs	64	92
Other shellfish	22	80
Total shellfish	1,245	2,881
Total landings	1,465	3,285

	Wick	
	Tonnes	£'000
Cod	623	1,327
Dogfish spur	73	66
Haddock	1,665	2,263
Hake	67	88
Lemon sole	25	46
Ling	233	288
Megrimms	464	1,188
Monks	1,654	4,282
Plaice	66	54
Redfish	38	49
Saithe	1,358	700
Skates & rays	118	99
Tusk	38	31
Whiting	380	394
Witches	44	44
Other demersal	111	220
Total demersal	6,959	11,138
Edible crabs	2,943	3,992
Lobsters	73	860
Mussels	1,100	287
Nephrops	253	848
Scallops	537	1,015
Squid	46	105
Velvet crabs	191	397
Whelks	129	77
Other shellfish	4	5
Total shellfish	5,274	7,585
Total landings	12,233	18,723

	Orkney	
	Tonnes	£'000
Total demersal	7	6
Total pelagic	8	4
Edible crabs	1,728	1,970
Green crabs	128	70
Lobsters	110	1,215
Periwinkles	65	178
Scallops	115	318
Velvet crabs	878	1,844
Whelks	143	80
Other shellfish	25	83
Total shellfish	3,192	5,761
Total landings	3,207	5,771

	Shetland	
	Tonnes	£'000
Cod	1,627	3,347
Dogfish spur	23	28
Haddock	3,786	4,984
Hake	134	142
Halibut	24	146
Lemon sole	75	201
Ling	452	480
Megrimms	474	1,126
Monks	2,161	5,167
Plaice	211	202
Pollack	131	207
Saithe	1,603	707
Skates & rays	192	170
Tusk	30	20
Whiting	1,750	1,897
Witches	56	62
Other demersal	85	179
Total demersal	12,814	19,065
Blue whiting	9,230	1,124
Herring	21,518	3,851
Horse mackerel	40	5
Mackerel	42,183	29,116
Other pelagic	606	36
Total pelagic	73,578	34,133
Edible crabs	474	470
Nephrops	213	997
Scallops	862	2,108
Squid	104	323
Velvet crabs	191	396
Other shellfish	25	208
Total shellfish	1,870	4,502
Total landings	88,261	57,698

	Stornoway	
	Tonnes	£'000
Dogfish spur	26	30
Skates & rays	22	16
Other demersal	94	122
Total demersal	142	168
Total pelagic	1	0
Edible crabs	988	1,054
Lobsters	178	1,849
Nephrops	2,231	7,277
Scallops	337	689
Velvet crabs	302	585
Other shellfish	20	73
Total shellfish	4,056	11,526
Total landings	4,199	11,695

	Lochinver	
	Tonnes	£'000
Blue ling	30	29
Cod	41	84
Dogfish spur	20	22
Forkbeard	38	33
Haddock	811	1,000
Hake	712	1,135
Ling	523	732
Megrimms	69	177
Monks	645	1,689
Saithe	133	66
Skates & rays	28	24
Other demersal	78	93
Total demersal	3,129	5,084
Total pelagic	9	6
Edible crabs	23	26
Nephrops	852	2,499
Red crabs	107	48
Scallops	43	80
Other shellfish	33	169
Total shellfish	1,059	2,822
Total landings	4,197	7,912

Chart 7. Average prices of landings into Scotland by UK vessels, by species type, 1990 to 2007

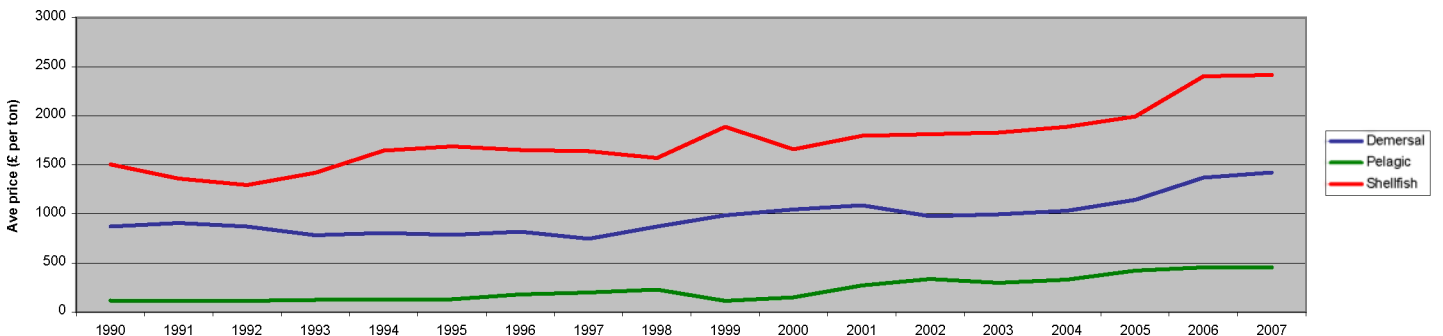


Table 23. continued

	Kinlochbervie	
	Tonnes	£'000
Blue ling	159	229
Cod	233	508
Dogfish portugese	51	45
Dogfish spur	42	50
Forkbeard	80	60
Greenland halibut	20	31
Haddock	846	1,035
Hake	86	152
Ling	248	291
Megrims	322	721
Monks	991	2,621
Redfish	86	97
Saithe	473	208
Scabbardfish	48	72
Skates & rays	110	79
Tusk	49	40
Whiting	78	74
Other demersal	94	183
Total demersal	4,017	6,495
Edible crabs	149	173
Nephrops	154	434
Squid	34	64
Other shellfish	47	256
Total shellfish	385	927
Total landings	4,402	7,423

	Ullapool	
	Tonnes	£'000
Blue ling	38	49
Cod	66	119
Dogfish knifetooth	20	6
Dogfish spotted	21	7
Forkbeard	58	49
Haddock	805	1,115
Hake	98	125
Ling	113	145
Megrims	73	177
Monks	638	1,508
Saithe	233	122
Skates & rays	47	41
Whiting	76	86
Witches	406	573
Other demersal	145	150
Total demersal	2,838	4,274
Mackerel	124	76
Total pelagic	125	77
Edible crabs	1,069	1,317
Nephrops	808	3,120
Red crabs	38	17
Scallops	89	160
Other shellfish	28	171
Total shellfish	2,031	4,786
Total landings	4,994	9,136

	Mallaig	
	Tonnes	£'000
Cod	24	32
Dogfish spur	44	52
Haddock	330	370
Hake	131	133
Megrims	69	107
Monks	174	404
Skates & rays	106	98
Whiting	129	117
Witches	65	59
Other demersal	56	58
Total demersal	1,130	1,431
Total pelagic	6	1
Edible crabs	123	135
Nephrops	2,811	8,124
Razor fish	38	113
Scallops	242	493
Velvet crabs	71	147
Other shellfish	18	173
Total shellfish	3,301	9,185
Total landings	4,437	10,617

	Oban	
	Tonnes	£'000
Haddock	49	63
Other demersal	55	67
Total demersal	105	130
Edible crabs	1,149	1,240
Lobsters	73	814
Nephrops	1,052	4,200
Scallops	828	1,830
Velvet crabs	300	621
Other shellfish	27	84
Total shellfish	3,429	8,788
Total landings	3,535	8,919

	Campbeltown	
	Tonnes	£'000
Haddock	104	108
Other demersal	67	71
Total demersal	172	179
Herring	163	27
Other pelagic	2	1
Total pelagic	165	28
Edible crabs	1,141	1,440
Lobsters	45	528
Nephrops	4,116	10,160
Razor fish	172	479
Scallops	836	1,596
Velvet crabs	402	815
Whelks	31	16
Other shellfish	25	46
Total shellfish	6,769	15,080
Total landings	7,107	15,286

	Ayr	
	Tonnes	£'000
Dogfish spur	44	51
Hake	40	143
Skates & rays	39	67
Other demersal	48	68
Total demersal	172	329
Total pelagic	24	36
Cockles	165	190
Edible crabs	32	38
Lobsters	50	562
Nephrops	2,435	5,411
Queen scallops	4,282	1,673
Scallops	1,184	2,485
Whelks	113	71
Other shellfish	7	19
Total shellfish	8,269	10,450
Total landings	8,465	10,815

	Portree	
	Tonnes	£'000
Total demersal	19	31
Edible crabs	611	742
Nephrops	1,396	6,843
Scallops	277	563
Velvet crabs	76	142
Other shellfish	25	203
Total shellfish	2,386	8,494
Total landings	2,405	8,524

	All ports	
	Tonnes	£'000
Blue ling	271	363
Catfish	206	315
Cod	7,115	14,649
Dogfish knifetooth	20	6
Dogfish other	23	24
Dogfish portugese	77	57
Dogfish spotted	40	18
Dogfish spur	395	404
Forkbeard	205	163
Greenland halibut	30	56
Gurnards - red	33	20
Haddock	29,509	37,579
Hake	2,154	3,013
Halibut	228	1,294
John dory	79	272
Lemon sole	946	2,416
Ling	2,511	3,084
Megrims	2,283	5,283
Monks	10,255	25,524
Other flatfish	34	59
Plaice	776	686
Pollack	887	1,243
Redfish	234	249
Roes	42	103
Saithe	9,545	4,659
Scabbardfish	57	87
Sharks	23	38
Skates & rays	803	699
Turbot	41	333
Tusk	220	180
Whiting	9,393	9,189
Witches	1,196	1,458
Other demersal	317	263
Total demersal	79,946	113,787
Anchovy - European	181	18
Blue whiting	21,886	2,686
Bream - rays	33	42
Herring	45,158	8,387
Horse mackerel	1,394	340
Mackerel	95,788	63,749
Pilchard	114	3
Sprats	87	12
Other pelagic	609	36
Total pelagic	165,250	75,274
Cockles	169	195
Edible crabs	11,439	13,855
Green crabs	182	101
Lobsters	894	9,837
Mussels	1,100	287
Nephrops	33,782	104,321
Periwinkles	66	181
Queen scallops	4,301	1,693
Razor fish	257	707
Red crabs	145	65
Scallops	8,862	18,247
Squid	1,193	3,275
Surf clams	60	65
Velvet crabs	2,946	5,852
Whelks	456	264
Other shellfish	30	246
Total shellfish	65,882	159,190
Total landings	311,078	348,252

(1) liveweight landings of 20 tonnes or more.

Chart 8. Liveweight landings into Scotland by UK vessels, by species type, 1967 to 2007

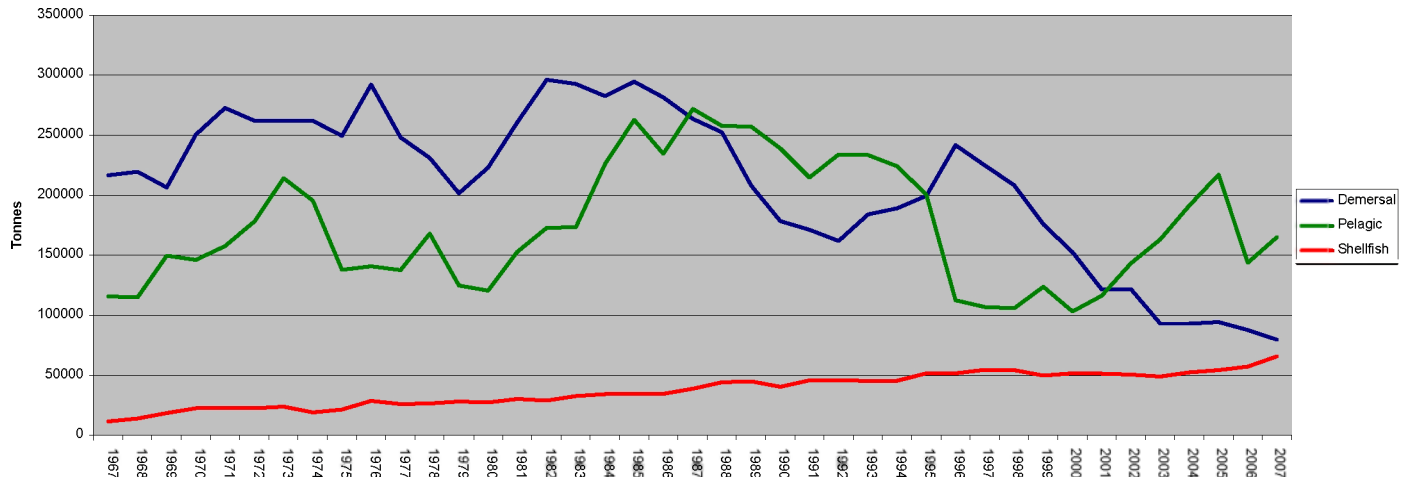


Chart 9. Average prices of landings into Scotland, by species type and month, 2007

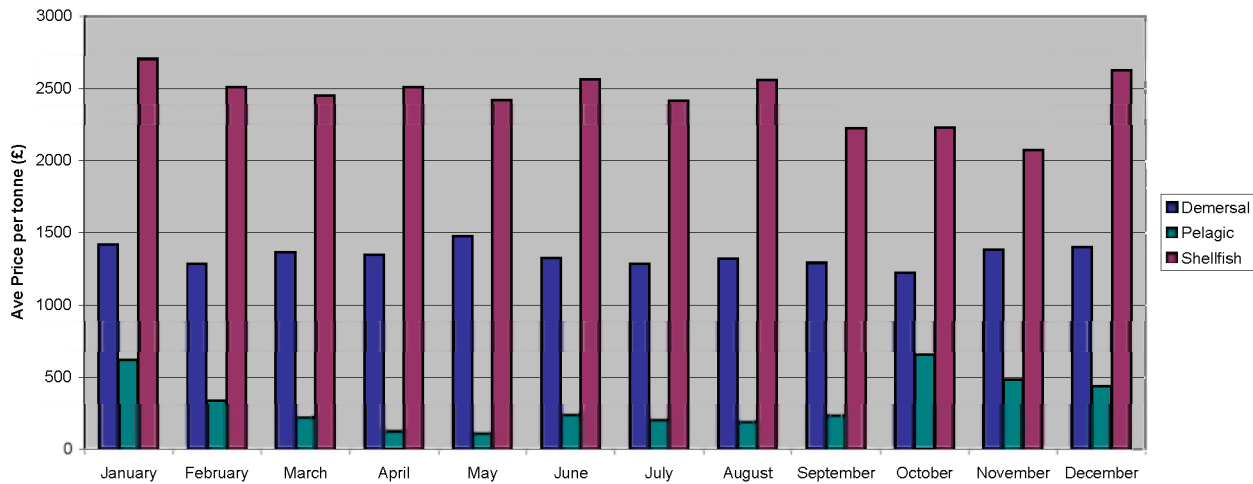


Table 24. Liveweight and value of landings into Scotland by foreign vessels, by main (1) species, 2003 to 2007

	Tonnes					Value (£'000) (1)				
	2003	2004	2005	2006	2007	2003	2004	2005	2006	2007
Blue ling	4,735	4,161	3,641	3,534	3,534	5,879	5,573	4,915	5,102	3,961
Cod	5,329	4,099	1,937	713	602	6,593	5,638	3,376	1,445	1,298
Dogfish portugese	1,750	1,485	1,091	835	928	1,449	1,256	938	722	1,445
Haddock	4,620	2,444	1,485	819	693	3,982	2,015	1,439	902	1,285
Hake	503	1,013	2,250	1,876	2,066	2,392	4,756	9,763	8,115	3,338
Ling	949	765	780	667	839	888	734	872	743	1,193
Monks	929	1,079	1,227	1,214	1,572	1,996	2,451	2,999	3,358	4,027
Roundnose grenadier	5,861	6,464	3,966	3,184	2,837	6,813	7,547	4,710	4,022	1,152
Saithe	6,182	7,796	7,823	8,137	8,208	3,562	3,910	4,525	4,181	3,934
Black scabbardfish	2,870	2,387	2,403	2,172	2,499	5,903	5,128	4,682	4,685	3,815
Other demersal	4,065	4,596	3,383	2,790	2,808	5,601	5,803	4,073	3,609	3,766
Total demersal	37,793	36,289	29,984	25,942	26,588	45,060	44,811	42,292	36,882	29,215
Blue whiting	22,820	19,902	14,270	17,820	19,971	1,624	1,212	727	2,488	3,409
Herring	377	5,351	15,338	26,331	19,571	45	844	4,163	6,632	4,119
Mackerel	9,923	13,201	13,742	22,963	23,102	4,277	6,985	13,568	18,595	15,476
Other pelagic	1,966	173	850	1,986	712	388	17	172	396	148
Total pelagic	35,087	38,627	44,200	69,100	63,357	6,335	9,059	18,630	28,111	23,153
Edible crabs	1	125	429	623	535	1	138	461	1,738	1,928
Other shellfish	171	201	97	71	230	301	344	187	211	437
Total shellfish	171	326	526	693	764	302	482	648	1,949	2,365
Total	73,051	75,241	74,711	95,735	90,709	51,697	54,352	61,569	66,943	54,732

(1) landings of £1.0 million or more in 2006

Table 25 Liveweight and value of landings into Scotland by foreign vessels, by country of origin, 2003 to 2007

	Tonnes					Value (£'000) (1)				
	2003	2004	2005	2006	2007	2003	2004	2005	2006	2007
Denmark	1,853	4,571	8,675	14,731	12,139	177	555	1,486	5,604	5,237
Eire	10,023	18,089	16,337	18,989	15,753	4,299	7,531	9,833	10,248	8,839
Faroe	25,662	19,365	18,939	18,780	19,919	18,912	15,240	17,450	13,109	12,613
France	16,004	17,243	14,888	15,467	16,519	21,963	24,364	21,124	19,254	17,074
Germany	256	1,174	1,486	354	967	383	625	656	866	1,013
Iceland	4,137	1,513	1,454	1,768	-	447	178	71	156	-
Netherlands	-	-	-	16	124	29	-	-	30	248
Norway	11,736	11,370	9,404	20,782	21,611	948	782	1,740	9,289	6,094
Poland	-	34	359	2,665	979	-	12	160	1,207	617
Russia	617	43	-	-	-	43	31	-	-	-
Spain	2,277	1,579	2,674	2,183	1,779	4,462	5,000	8,866	7,181	2,677
Sweden	450	262	495	-	919	34	34	183	-	320
Other	36	-	-	-	-	-	-	-	-	-
Total	73,051	75,241	74,711	95,735	90,709	51,697	54,352	61,569	66,943	54,732

Table 26. Liveweight and value of landings into Scotland by foreign vessels, by landing district, 2003 to 2007

	Tonnes					Value (£'000) (1)				
	2003	2004	2005	2006	2007	2003	2004	2005	2006	2007
North east ports (2)	10,671	14,507	21,797	33,213	31,387	5,043	6,392	11,929	17,325	15,269
Other east coast	-	-	-	-	-	-	-	-	-	-
North mainland ports (3)	15,689	14,635	9,942	6,389	6,114	13,707	11,678	8,662	7,660	6,548
Orkney/Shetland	26,101	24,649	22,825	35,955	32,652	2,785	3,159	7,099	10,990	10,118
North west/WI ports (4)	20,589	21,372	20,146	20,145	20,556	30,161	32,974	33,879	30,925	22,797
South west ports (5)	-	77	-	34	-	-	149	-	42	-
Total	73,051	75,241	74,711	95,735	90,709	51,697	54,352	61,569	66,943	54,732

(1) When the Register of Buyers and Sellers (RBS) was introduced in September 2005, Sales Notes were not initially required for sales of shellfish and information on the value of such landings is consequently missing. The value has therefore been estimated for a number of landings, mostly shellfish, relating to voyages starting on or after 1 September 2005.

(2) Aberdeen to Buckie port districts; (3) Scrabster to Kinlochbervie; (4) Lochinver to Oban; (5) Campbeltown to Ayr

Table 27. Liveweight and value of landings by Scottish based vessels, by main (1) species, 2003 to 2007

	Landings into UK & abroad (tonnes)														
	Into UK					Abroad					Total				
	2003	2004	2005	2006	2007	2003	2004	2005	2006	2007	2003	2004	2005	2006	2007
Cod	8,727	6,986	7,133	7,106	6,971	261	338	188	230	254	8,988	7,325	7,321	7,336	7,226
Dover sole	15	8	20	11	12	233	355	353	341	520	248	363	373	353	532
Haddock	37,710	42,370	44,581	36,950	29,103	89	159	75	53	90	37,799	42,529	44,655	37,003	29,192
Hake	681	1,021	1,596	1,838	2,077	213	275	544	685	647	894	1,296	2,141	2,523	2,724
Lemon sole	817	670	877	878	942	149	160	196	233	234	966	830	1,073	1,112	1,176
Ling	3,420	3,359	2,775	2,440	2,360	59	141	44	63	86	3,479	3,500	2,819	2,503	2,446
Megrimms	2,127	1,939	1,839	1,880	2,303	78	92	104	111	119	2,205	2,031	1,942	1,991	2,422
Monks	7,080	7,393	9,316	8,943	9,872	267	338	1,021	907	978	7,347	7,731	10,336	9,850	10,850
Plaice	1,298	885	933	1,004	777	5,744	6,999	5,502	5,041	4,605	7,042	7,885	6,435	6,045	5,382
Saithe	6,378	6,958	7,927	8,872	8,284	95	171	247	30	66	6,473	7,129	8,174	8,902	8,350
Whiting	6,536	5,564	6,018	8,466	9,473	45	63	49	62	29	6,581	5,627	6,067	8,528	9,502
Other demersal	14,444	10,963	5,309	4,528	4,509	3,186	4,015	3,039	3,410	4,919	17,631	14,978	8,349	7,938	9,428
Total demersal	89,234	88,116	88,325	82,916	76,683	10,420	13,107	11,361	11,168	12,547	99,654	101,224	99,686	94,085	89,230
Blue whiting	9,728	24,971	28,783	21,381	21,886	19,015	33,535	75,788	50,725	21,654	28,743	58,505	104,571	72,106	43,540
Herring	50,902	53,133	70,559	55,077	42,048	10,654	13,154	18,825	17,970	16,073	61,556	66,287	89,384	73,047	58,121
Mackerel	99,098	111,150	116,235	63,580	90,339	47,680	31,235	15,941	15,133	17,728	146,778	142,385	132,176	78,713	108,067
Other pelagic	3,565	2,632	1,279	938	2,376	213	1,484	653	996	1,299	3,778	4,116	1,932	1,934	3,675
Total pelagic	163,293	191,886	216,856	140,975	156,649	77,562	79,408	111,207	84,825	56,754	240,854	271,294	328,063	225,800	213,404
Edible crabs	5,724	5,919	6,418	8,384	10,000	20	58	61	85	89	5,744	5,977	6,479	8,469	10,089
Lobsters	287	413	406	708	885	1	1	2	3	1	288	414	408	711	886
Nephrops	20,406	22,719	24,928	29,449	32,134	36	35	167	204	206	20,441	22,754	25,094	29,652	32,340
Scallops	12,534	14,116	12,454	10,969	12,371	1	1	3	1	0	12,535	14,117	12,458	10,970	12,371
Squid	2,223	2,136	1,916	873	1,194	100	111	140	95	53	2,323	2,247	2,056	968	1,246
Velvet crabs	1,519	2,299	1,802	2,594	2,944	-	-	-	-	-	1,519	2,299	1,802	2,594	2,944
Other shellfish	7,832	6,454	6,750	5,595	6,862	215	555	267	374	124	8,047	7,008	7,017	5,969	6,986
Total shellfish	50,525	54,056	54,674	58,572	66,389	373	760	640	761	473	50,898	54,816	55,313	59,334	66,862
Total landings	303,052	334,058	359,855	282,463	299,721	88,354	93,275	123,208	96,755	69,774	391,406	427,333	483,062	379,218	369,496

	Landings into UK & abroad (value £'000) (2)														
	Into UK					Abroad					Total				
	2003	2004	2005	2006	2007	2003	2004	2005	2006	2007	2003	2004	2005	2006	2007
Cod	13,649	12,036	12,671	13,654	14,380	384	526	301	399	637	14,032	12,562	12,971	14,053	15,017
Dover sole	69	41	131	169	77	1,628	2,417	2,637	2,871	3,207	1,696	2,458	2,768	3,040	3,284
Haddock	25,254	30,236	36,266	43,334	37,104	69	107	66	48	138	25,323	30,343	36,332	43,382	37,241
Hake	1,237	1,947	4,203	4,939	2,949	408	511	1,455	2,948	1,086	1,646	2,458	5,657	7,888	4,035
Lemon sole	1,803	2,049	2,030	2,145	2,407	335	351	461	687	765	2,138	2,401	2,492	2,832	3,172
Ling	3,579	3,504	3,072	2,937	2,899	153	176	90	67	107	3,732	3,680	3,163	3,004	3,006
Megrimms	4,291	3,960	3,847	4,726	5,390	336	503	393	264	292	4,627	4,462	4,240	4,989	5,682
Monks	14,424	15,416	23,003	23,615	24,634	1,093	1,173	4,191	3,046	2,600	15,517	16,589	27,195	26,662	27,234
Plaice	1,101	690	853	874	689	8,001	8,675	7,433	6,934	6,326	9,102	9,365	8,286	7,808	7,014
Saithe	2,592	2,853	3,749	4,564	4,032	73	81	138	17	55	2,665	2,935	3,887	4,582	4,087
Whiting	4,219	3,983	4,248	7,561	9,224	22	41	29	50	32	4,241	4,023	4,277	7,611	9,255
Other demersal	18,979	12,963	7,476	6,456	6,717	5,493	7,185	4,161	4,093	4,064	24,472	20,149	11,638	10,560	10,782
Total demersal	91,196	89,679	101,549	114,975	110,501	17,995	21,746	21,355	21,425	19,309	109,191	111,425	122,904	136,400	129,810
Blue whiting	670	1,344	1,368	1,799	2,686	1,545	2,194	4,620	4,526	1,644	2,215	3,538	5,988	6,325	4,331
Herring	6,280	6,478	14,276	12,711	7,792	2,142	2,482	4,109	6,912	6,453	8,422	8,960	18,385	19,623	14,245
Mackerel	41,742	55,086	76,031	49,816	60,536	24,883	16,851	13,128	14,079	10,043	66,624	71,937	89,158	63,896	70,580
Other pelagic	465	309	187	139	415	12	517	611	1,621	1,088	477	826	798	1,759	1,503
Total pelagic	49,157	63,218	91,861	64,465	71,430	28,581	22,043	22,468	27,138	19,229	77,738	85,262	114,329	91,602	90,659
Edible crabs	6,182	6,152	6,885	10,232	11,953	13	30	50	47	69	6,195	6,182	6,934	10,280	12,022
Lobsters	3,180	4,228	4,360	7,592	9,732	3	2	10	22	11	3,183	4,231	4,370	7,614	9,743
Nephrops	52,119	57,209	67,463	88,940	101,012	125	118	751	932	1,144	52,244	57,327	68,214	89,872	102,156
Scallops	19,425	22,116	20,167	20,886	25,606	1	1	5	2	0	19,426	22,117	20,172	20,888	25,606
Squid	4,838	5,285	4,202	2,247	3,280	553	557	733	363	188	5,391	5,842	4,935	2,609	3,467
Velvet crabs	2,381	3,118	2,994	4,758	5,845	-	-	-	-	-	2,381	3,118	2,994	4,758	5,845
Other shellfish	3,489	3,441	3,919	4,266	3,769	232	1,398	275	207	68	3,721	4,840	4,194	4,472	3,836
Total shellfish	91,615	101,549	109,989	138,920	161,197	927	2,106	1,823	1,573	1,479	92,542	103,655	111,812	140,493	162,676
Total landings	231,968	254,446	303,399	318,360	343,127	47,503	45,895	45,646	50,135	40,017	279,471	300,342	349,045	368,495	383,144

	Landings into UK & abroad (value £'000) (2007 prices)														
	Into UK					Abroad					Total				
	2003	2004	2005	2006	2007	2003	2004	2005	2006	2007	2003	2004	2005	2006	2007
Cod	15,146	12,998	13,394	14,052	14,380	426	568	318	411	637	15,571	13,565	13,712	14,462	15,017
Dover sole	76	44	138	173	77	1,806	2,610	2,788	2,955	3,207	1,882	2,655	2,926	3,128	3,284
Haddock	28,024	32,651	38,336	44,596	37,104	77	115	70	49	138	28,100	32,766	38,406	44,645	37,241
Hake	1,373	2,102	4,443	5,083	2,949	453	552	1,538	3,034	1,086	1,826	2,654	5,980	8,117	4,035
Lemon sole	2,001	2,213	2,146	2,207	2,407	372	379	488	707	765	2,373	2,592	2,634	2,914	3,172
Ling	3,972	3,784	3,248	3,022	2,899	170	190	96	69	107	4,142	3,973	3,343	3,091	3,006
Megrimms	4,761	4,276	4,067	4,863	5,390	373	543	415	271	292	5,134	4,819	4,482	5,135	5,682
Monks	16,006	16,647	24,316	24,303	24,634	1,213	1,266	4,431	3,135	2,600	17,219	17,914	28,747	27,438	27,234
Plaice	1,222	745	902	900	689	8,878	9,368	7,857	7,136	6,326	10,100	10,113	8,759	8,036	7,014
Saithe	2,876	3,081	3,963	4,697	4,032	81	88	146	18	55	2,957	3,169	4,109	4,715	4,087
Whiting	4,682	4,301	4,490	7,781	9,224	25	44	31	52	32	4,706	4,345	4,521	7,833	9,255
Other demersal	21,061	13,998	7,903	6,644	6,717	6,096	7,759	4,399	4,212	4,064	27,156	21,758	12,302	10,857	10,782
Total demersal	101,199	96,840	107,347	118,324	110,501	19,968	23,483	22,574	22,049	19,309	121,167	120,323	129,921	140,372	129,810
Blue whiting	743	1,452	1,446	1,851	2,686	1,715	2,369	4,884	4,658	1,644	2,458	3,821	6,330	6,509	4,331
Herring	6,969	6,996	15,091	13,081	7,792	2,376	2,680	4,344	7,113	6,453	9,345</				

Chart 10. Value of landings at 2007 prices per Scottish based over 10 metres vessel, by vessel type 1998 to 2007

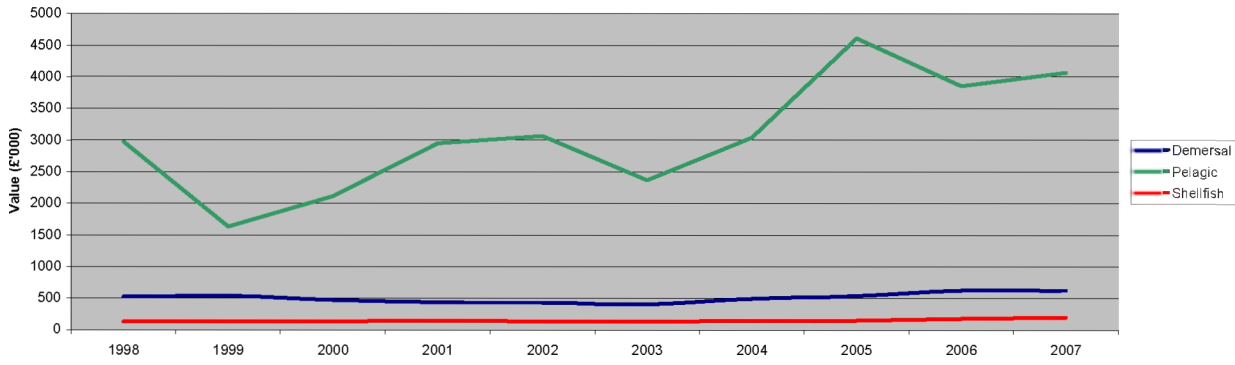


Table 28. Liveweight and value of landings abroad by Scottish based vessels, by country of landing, 2003 to 2007

	Tonnes					Value (£ thousand) (1)				
	2003	2004	2005	2006	2007	2003	2004	2005	2006	2007
EU: Denmark	16,973	33,129	60,730	45,244	32,244	3,938	3,408	8,517	8,170	8,706
Eire	6,016	2,052	359	5,580	4,456	1,205	1,127	1,015	2,465	1,882
France	361	178	309	206	405	73	51	120	419	894
Germany	167	725	7,995	6,032	1,847	208	245	1,913	1,455	269
Holland	7,447	8,972	7,645	6,934	6,219	12,029	13,936	13,080	13,141	12,172
Spain	2,683	3,464	3,317	2,176	2,006	6,122	8,200	8,096	6,030	4,306
Sweden	-	-	-	-	144	-	-	-	-	69
Non-EU: Faroes	3,374	5,297	9,103	4,281	-	299	351	574	569	-
Iceland	2,330	2,510	16,311	2,584	-	185	534	1,100	351	-
Norway	49,002	36,576	16,670	21,978	20,909	23,444	17,289	10,255	15,219	10,457
Other	-	373	769	1,741	1,543	-	754	976	2,315	1,261
Total	88,354	93,275	123,208	96,755	69,774	47,503	45,895	45,646	50,135	40,017

(1) When the Register of Buyers and Sellers (RBS) was introduced in September 2005, Sales Notes were not initially required for sales of shellfish and information on the value of such landings is consequently missing. The value has therefore been estimated for a number of landings, mostly shellfish, relating to voyages starting on or after 1 September 2005.

Table 29. Liveweight and value of landings from specified ICES areas by Scottish based vessels, by main (1) species, 2007

ICES area	Liveweight (tonnes)									Value (£'000) (1)										
	North sea IV a	IV b	Area II a	Faroes V b	West Scotland VI a	VI b	Irish sea VII a	Rest of area VII	Other	Total	North sea IV a	IV b	Area II a	Faroes V b	West Scotland VI a	VI b	Irish sea VII a	Rest of area VII	Other	Total
Cod	6,102	399	1	410	260	26	2	14	12	7,226	12,657	891	2	859	510	50	5	24	20	15,017
Dover sole	0	486	-	-	1	0	4	4	37	532	0	2,892	-	-	8	1	27	31	325	3,284
Haddock	22,602	2,317	0	50	2,587	1,635	1	-	1	29,192	29,063	2,636	0	75	3,310	2,157	0	-	1	37,241
Hake	933	60	0	1	1,257	1	0	138	333	2,724	1,121	85	0	1	1,952	1	1	293	581	4,035
Halibut	187	36	-	2	6	2	-	0	0	233	1,060	203	-	11	37	9	-	0	0	1,321
Lemon sole	553	594	0	2	18	3	0	1	4	1,176	1,450	1,660	0	7	33	8	0	4	10	3,172
Ling	1,257	9	4	64	867	213	0	23	9	2,446	1,451	10	4	90	1,166	239	0	34	12	3,006
Megrim	1,423	13	5	8	658	152	-	23	140	2,422	3,249	16	14	18	1,655	266	-	65	401	5,682
Monks	8,304	172	10	123	1,071	476	3	331	361	10,850	20,496	417	24	306	2,868	1,315	7	821	981	27,234
Plaice	589	4,529	0	5	44	-	0	2	212	5,382	534	6,183	0	5	33	-	0	3	256	7,014
Saithe	6,363	244	5	408	1,125	204	-	1	0	8,350	3,102	129	1	202	552	99	-	1	0	4,087
Turbot	32	187	-	0	3	0	0	4	9	236	270	1,260	-	1	21	2	1	28	68	1,652
Whiting	8,392	667	-	15	405	1	0	17	4	9,502	8,318	484	-	17	409	2	0	22	3	9,255
Other demersal	2,167	2,617	106	135	1,742	106	6	500	1,580	8,958	2,698	1,126	108	184	1,843	100	10	1,037	702	7,809
Total demersal	58,903	12,330	130	1,223	10,044	2,820	17	1,060	2,702	89,230	85,470	17,992	153	1,776	14,397	4,249	50	2,362	3,360	129,810
Blue whiting	77	-	-	2,813	11,388	6,727	-	22,478	58	43,540	11	-	-	361	1,288	617	-	2,051	3	4,331
Herring	32,624	0	13,244	-	12,190	-	-	-	63	58,121	6,202	0	5,730	-	2,283	-	-	-	31	14,245
Mackerel	37,024	251	-	-	61,506	-	-	5,097	4,188	108,067	23,629	172	-	-	40,512	-	-	3,464	2,803	70,580
Other pelagic	541	286	-	-	246	-	-	660	1,943	3,675	31	29	-	-	26	-	-	154	1,264	1,503
Total pelagic	70,266	538	13,244	2,813	85,330	6,727	-	28,235	6,251	213,404	29,872	201	5,730	361	44,108	617	-	5,669	4,100	90,659
Edible crabs	2,673	699	-	-	6,706	-	9	1	2	10,089	3,115	796	-	-	8,097	-	12	1	3	12,022
Lobsters	193	272	-	-	374	-	47	0	0	866	2,177	2,960	-	-	4,076	-	528	0	0	9,743
Nephrops	13,200	4,723	-	-	14,139	-	73	3	203	32,340	42,952	12,956	-	-	44,924	-	153	13	1,159	102,156
Queen scallops	11	0	-	-	48	-	4,476	-	-	4,535	9	0	-	-	28	-	1,656	-	-	1,693
Scallops	2,177	2,441	-	-	2,757	-	2,229	2,740	26	12,371	4,762	4,698	-	-	5,650	-	5,005	5,482	9	25,606
Squid	864	245	-	1	71	12	0	37	17	1,246	2,391	714	-	2	148	26	0	148	38	3,467
Velvet crabs	1,366	396	-	-	1,181	-	-	-	-	2,944	2,787	691	-	-	2,367	-	-	-	-	5,845
Other shellfish	1,684	138	-	-	316	1	286	12	15	2,451	818	137	-	-	856	1	301	18	13	2,143
Total shellfish	22,169	8,914	-	1	25,593	12	7,119	2,792	263	66,862	59,011	22,951	-	2	66,146	27	7,655	5,661	1,223	162,676
Total landings	151,338	21,782	13,374	4,037	120,967	9,559	7,136	32,087	9,216	369,496	174,354	41,145	5,882	2,139	124,651	4,894	7,705	13,691	8,683	383,144

(1) Total value over £1.0m

Table 30. Liveweight and value of landings by Scottish based vessels, by main (1) species and overall vessel length group (metres), 2007

	Liveweight (tonnes)										Total	Value (£'000)										Total	
	Overall vessel length group											Overall vessel length group											
	<8	8-10	>10-12	>12-15	>15-18	>18-24	>24-30	>30-40	>40-50	over 50		<8	8-10	>10-12	>12-15	>15-18	>18-24	>24-30	>30-40	>40-50	over 50		
Cod	1	10	7	49	253	2,126	3,897	723	161	-	7,226	2	16	11	81	472	4,213	8,286	1,528	408	-	15,017	
Dover sole	0	0	0	0	1	5	1	133	392	-	532	0	1	0	1	6	31	10	824	2,411	-	3,284	
Haddock	0	16	15	193	496	8,328	15,590	4,531	21	-	29,192	0	13	17	155	492	9,986	20,354	6,218	27	-	37,241	
Hake	-	0	0	11	37	385	1,177	1,099	13	-	2,724	-	1	0	7	34	419	1,668	1,891	14	-	4,035	
Halibut	-	0	0	5	11	104	93	18	3	-	233	-	2	1	28	59	605	513	98	15	-	1,321	
Lemon sole	-	2	1	14	42	514	312	194	98	-	1,176	-	3	2	29	81	1,242	879	592	345	-	3,172	
Ling	-	1	0	5	28	437	1,438	527	8	-	2,446	-	1	1	6	31	488	1,760	709	10	-	3,006	
Megrims	-	0	1	23	139	1,293	693	269	4	-	2,422	-	0	1	45	310	3,013	1,634	671	8	-	5,682	
Monks	-	3	6	121	371	3,936	4,217	2,125	71	-	10,850	-	6	13	277	881	9,642	10,817	5,408	191	-	27,234	
Plaice	0	8	2	20	66	341	299	1,105	3,540	-	5,382	0	7	2	14	51	284	288	1,432	4,935	-	7,014	
Saithe	1	9	1	21	75	1,378	4,766	1,961	137	-	8,350	1	5	1	9	32	612	2,286	1,059	82	-	4,087	
Turbot	0	0	0	1	5	19	15	48	147	-	236	0	2	1	11	31	153	127	316	1,010	-	1,652	
Whiting	-	19	16	214	412	4,047	4,386	382	26	-	9,502	-	16	13	136	319	3,616	4,672	455	30	-	9,255	
Other demersal	7	15	11	95	275	1,225	1,992	1,681	1,100	2,557	8,958	14	19	12	198	273	1,369	2,454	2,436	883	151	7,809	
Total demersal	10	86	62	774	2,211	24,138	38,877	14,796	5,721	2,557	89,230	17	91	74	996	3,072	35,654	55,749	23,638	10,369	151	129,810	
Blue whiting	-	-	-	-	-	-	-	-	-	43,540	43,540	-	-	-	-	-	-	-	-	-	4,331	4,331	
Herring	-	-	-	-	163	0	0	-	1,765	56,193	58,121	-	-	-	-	27	0	0	-	317	13,902	14,245	
Mackerel	215	140	0	0	8	2	0	2,147	105,555	-	108,067	121	83	-	0	0	4	2	0	1,394	68,976	70,580	
Other pelagic	-	0	-	0	6	-	7	425	602	2,634	3,675	-	0	-	0	1	-	5	482	595	420	1,503	
Total pelagic	215	140	0	0	177	2	8	2,571	107,922	102,367	213,404	121	84	0	0	28	4	7	482	2,305	87,628	90,659	
Edible crabs	686	3,986	1,692	822	1,773	1,041	0	17	72	-	10,089	756	4,677	1,870	971	2,285	1,394	1	14	54	-	12,022	
Lobsters	307	348	136	67	24	2	-	0	1	-	886	3,321	3,872	1,491	721	292	34	-	1	10	-	9,743	
Nephrops	324	3,249	2,458	4,563	8,079	12,193	1,367	94	13	-	32,340	2,265	13,904	8,964	11,443	20,572	39,514	4,991	461	41	-	102,156	
Queen scallops	-	9	3	0	51	4,471	-	-	0	-	4,535	-	13	3	0	20	1,657	-	-	0	-	1,693	
Scallops	150	333	574	506	2,740	3,332	2,069	2,666	-	-	12,371	340	1,121	1,184	963	5,474	6,355	5,179	4,991	-	-	25,606	
Squid	-	227	55	161	164	334	200	87	18	-	1,246	-	640	155	493	520	817	519	262	61	-	3,467	
Velvet crabs	1,278	1,140	467	45	13	0	-	-	-	-	2,944	2,416	2,274	1,019	106	30	1	-	-	-	-	-	5,845
Other shellfish	220	535	351	1,201	10	6	2	99	27	-	2,451	413	795	445	386	25	7	2	61	11	-	2,143	
Total shellfish	2,966	9,827	5,737	7,365	12,855	21,379	3,638	2,964	131	-	66,862	9,511	27,297	15,131	15,082	29,218	49,779	10,692	5,789	177	-	162,676	
Total landings	3,190	10,053	5,800	8,139	15,243	45,520	42,522	20,330	113,774	104,924	369,496	9,649	27,471	15,205	16,078	32,317	85,436	66,447	29,909	12,852	87,779	383,144	

(1) Total value over £1.0m

Chart 11. Value of landings at 2007 prices by Scottish based vessels by species type, 1998 to 2007

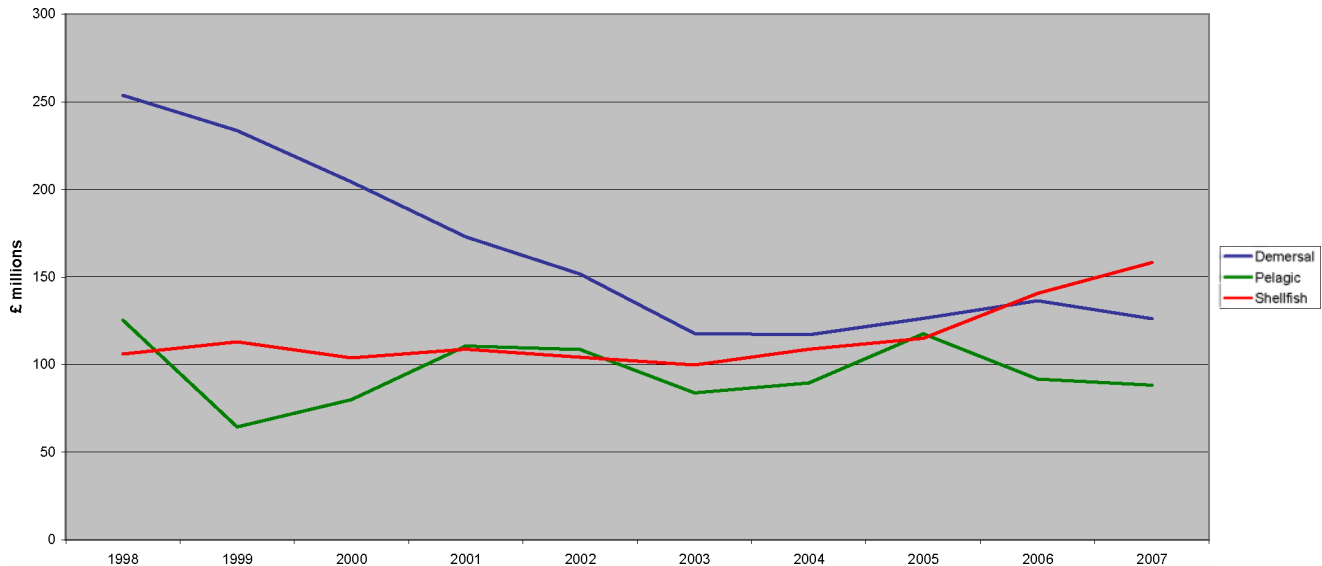


Table 31. Liveweight and value of landings by Scottish based vessels, by main (1) species and gear 2007

	Liveweight (tonnes)								Value (£'000)							
	Demersal trawl (2)	Demersal seine	Demersal twin trawl	Lines	Gill nets	Beam trawl	Other demersal	Demersal total	Demersal trawl (2)	Demersal seine	Demersal twin trawl	Lines	Gill nets	Beam trawl	Other demersal	Demersal total
Cod	5,469	1,043	588	4	3	86	-	7,192	11,522	2,026	1,204	9	5	164	-	14,930
Dogfish spur	247	43	27	62	-	7	-	386	236	35	30	332	-	2	-	636
Dover sole	7	-	0	-	0	516	-	524	33	-	2	-	1	3,192	-	3,228
Haddock	23,104	4,757	1,247	2	0	5	-	29,115	29,956	5,799	1,404	4	0	4	-	37,167
Hake	1,217	267	53	1,179	0	5	-	2,720	1,671	312	44	1,997	1	5	-	4,030
Hallibut	182	19	30	-	1	1	-	232	1,022	105	179	-	5	4	-	1,316
Lemon sole	911	71	100	-	-	89	-	1,171	2,439	172	258	-	-	291	-	3,160
Ling	1,688	36	217	465	38	1	-	2,445	2,007	38	250	675	31	2	-	3,004
Megrim	1,898	209	311	-	1	3	-	2,422	4,454	556	663	-	3	5	-	5,681
Monks	7,715	204	1,456	0	1,395	39	-	10,808	19,445	484	3,548	0	3,567	103	-	27,147
Plaice	944	125	234	1	0	4,059	-	5,363	1,003	117	284	1	0	5,586	-	6,991
Pollack	611	25	19	6	1	1	0	664	912	35	32	10	2	1	1	993
Saithe	7,296	385	634	20	1	2	-	8,338	3,587	191	291	10	0	2	-	4,080
Skates & rays	601	74	77	14	42	32	-	840	507	74	58	15	31	31	-	716
Turbot	41	2	12	0	1	175	-	231	330	15	93	0	3	1,176	-	1,617
Whiting	6,767	1,880	752	-	-	12	-	9,411	6,625	1,970	582	-	-	11	-	9,188
Witches	621	41	145	-	-	0	-	807	712	53	156	-	-	0	-	921
Other demersal	3,214	348	125	932	6	683	-	5,308	2,061	759	151	589	18	747	-	4,325
Total demersal	62,534	9,529	6,025	2,686	1,488	5,717	0	87,979	88,521	12,741	9,229	3,643	3,668	11,327	1	129,130
Other species	2,828	118	109	1,362	78	166	0	4,660	3,655	363	279	1,283	47	176	0	5,803

	Liveweight (tonnes)			Value (£'000)		
	Pelagic purse seine	Pelagic trawl	Pelagic total	Pelagic purse seine	Pelagic trawl	Pelagic total
Blue whiting	-	43,540	43,540	-	4,331	4,331
Herring	-	57,360	57,360	-	14,130	14,130
Mackerel	-	106,786	106,786	-	69,764	69,764
Other pelagic	-	2,631	2,631	-	419	419
Total pelagic	-	210,318	210,318	-	88,644	88,644
Other species	-	1,036	1,036	-	378	378

	Liveweight (tonnes)						Value (£'000)					
	Creel fishing	Nephrop trawl (2)	Dredging	Hand shellfishing	Other methods	Shellfish total	Creel fishing	Nephrop trawl (2)	Dredging	Hand shellfishing	Other methods	Shellfish total
Edible crabs	9,976	0	4	5	-	9,986	11,922	0	6	6	-	11,934
Lobsters	881	0	0	1	-	883	9,696	0	3	13	-	9,712
Nephrops	1,834	30,484	1	2	1	32,322	13,760	88,320	6	12	1	102,100
Queen scallops	1	-	4,455	3	-	4,459	1	-	1,651	7	-	1,658
Razor fish	22	-	54	175	6	257	63	-	144	484	16	707
Scallops	23	-	11,974	344	19	12,360	66	-	24,668	786	62	25,582
Velvet crabs	2,932	-	1	4	-	2,937	5,823	-	2	8	-	5,833
Other shellfish	669	3	1,303	85	0	2,059	587	6	532	219	1	1,344
Total shellfish	16,338	30,487	17,793	619	26	65,263	41,917	88,326	27,011	1,536	79	158,870
Other species	38	149	52	0	-	239	29	126	162	0	-	318

(1) Total value over £0.5m

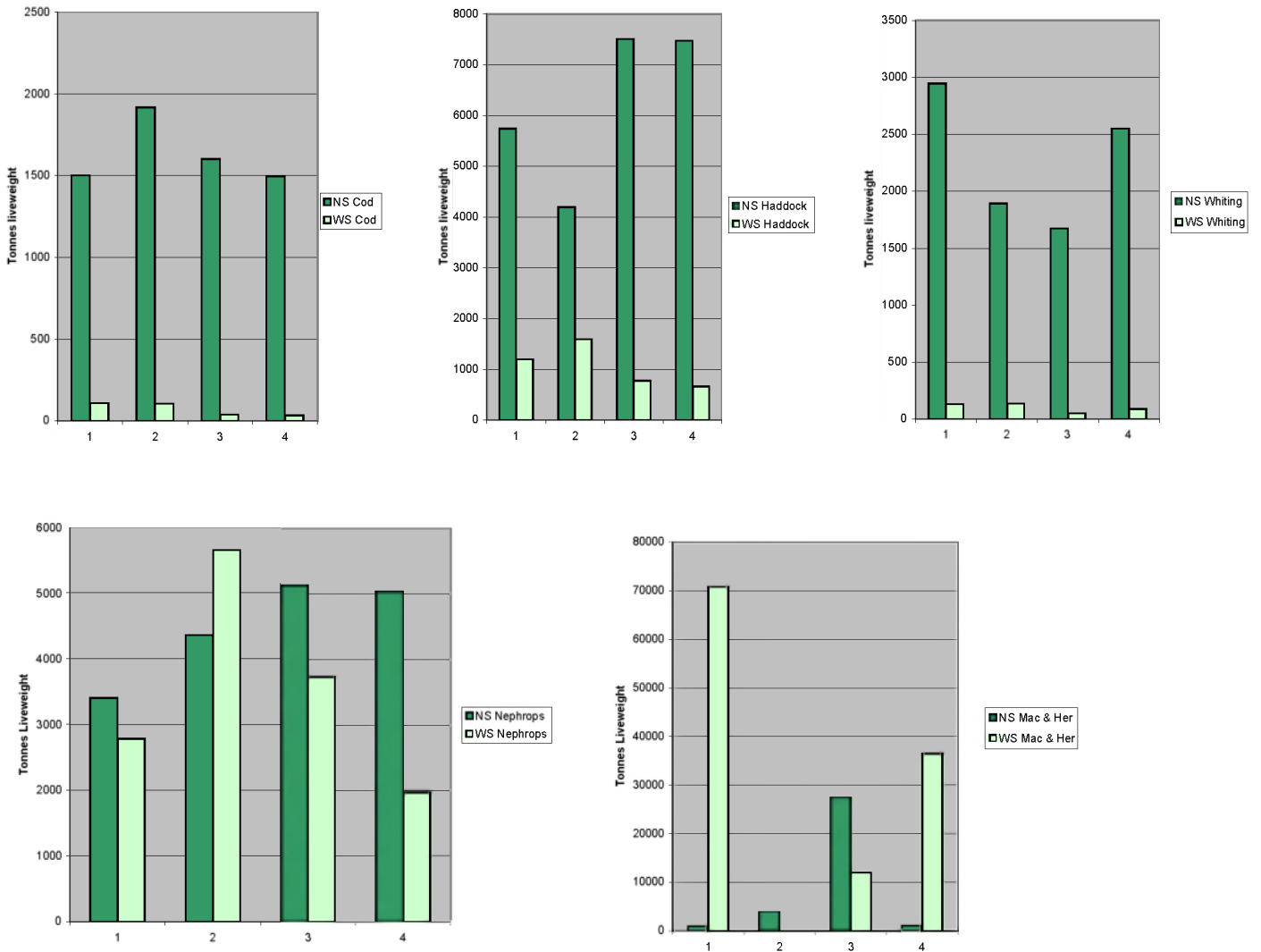
(2) Bottom trawl gears catching demersal species have been included as demersal trawl; those catching nephrops have been included as nephrop trawl.

Table 32. Key commercial quota stocks landed by Scottish vessels 2003 to 2007

	Tonnes					Value (£'000) (1)				
	2003	2004	2005	2006	2007	2003	2004	2005	2006	2007
Atlanto Scandian Herring	9,215	6,960	-	11,973	13,244	1,937	1,261	-	5,217	5,730
North Sea cod	7,774	6,590	6,625	6,723	6,512	12,098	11,283	11,675	12,833	13,567
North Sea haddock	31,354	39,104	41,315	31,547	24,919	20,184	27,466	33,255	36,790	31,699
North Sea herring	39,768	45,331	74,510	47,920	32,624	4,967	5,927	15,417	11,318	6,202
North Sea monkfish	5,512	5,456	7,569	7,257	8,238	11,230	11,097	18,666	19,130	20,314
North Sea nephrops	10,399	13,184	15,344	16,894	17,923	23,345	28,950	38,641	49,845	55,908
West of Scotland cod	933	440	329	334	286	1,454	751	606	646	560
West of Scotland haddock	6,200	3,242	3,119	5,339	4,222	4,879	2,668	2,841	6,441	5,466
West of Scotland herring	12,573	13,996	14,830	13,148	12,027	1,517	1,772	2,958	3,087	2,256
West of Scotland mackerel	146,240	141,001	131,382	78,219	107,066	66,411	71,138	88,552	63,620	69,996
West of Scotland monkfish	818	1,031	1,493	1,397	1,547	1,639	2,281	4,396	4,086	4,183
West of Scotland nephrops	9,920	9,412	9,493	12,504	14,139	28,536	27,971	28,492	38,982	44,924
Edible crabs	5,752	5,977	6,581	8,469	10,089	6,202	6,182	7,031	10,280	12,022
Velvet crabs	1,519	2,299	1,802	2,594	2,944	2,381	3,118	2,994	4,758	5,845
Scallops	12,535	14,113	12,458	10,970	12,371	19,426	22,108	20,172	20,888	25,600

(1) When the Register of Buyers and Sellers (RBS) was introduced in September 2005, Sales Notes were not initially required for sales of shellfish and information on the value of such landings is consequently missing. The value has therefore been estimated for a number of landings, mostly shellfish, relating to voyages starting on or after 1 September 2005.

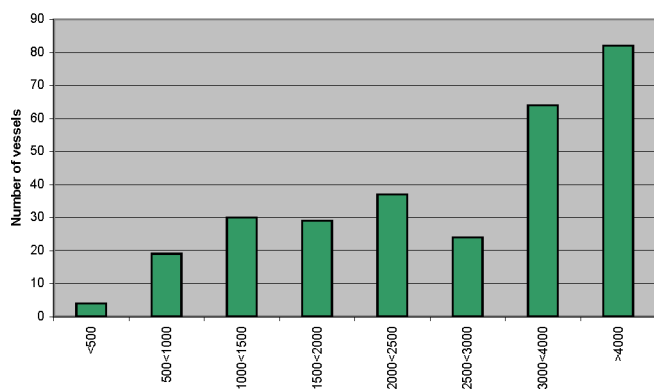
Chart 12. Liveweight landings by Scottish based vessels, by quarter, 2007



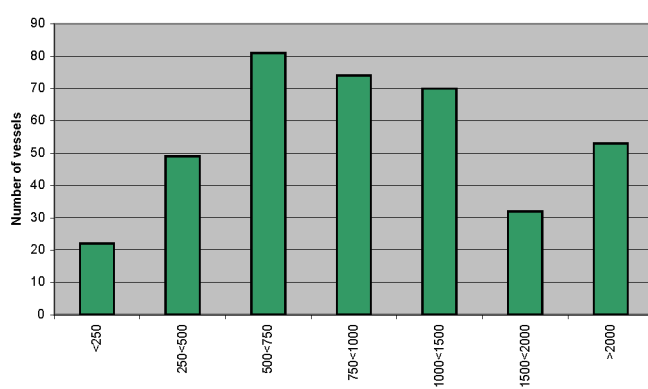
NS: North Sea WS: West of Scotland

Chart 13. Average value of landings per day at sea by Scottish based over 10m based vessels, by vessel type, 2007

Demersal Vessels



Shellfish Vessels



Pelagic Vessels

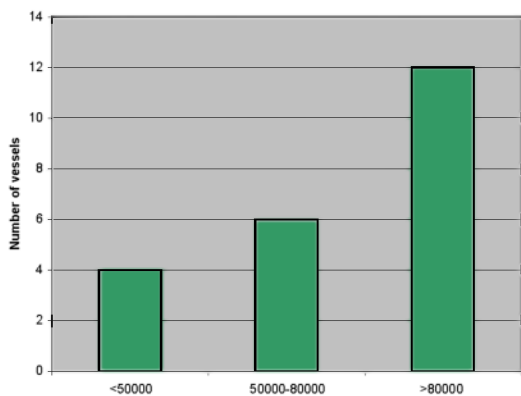
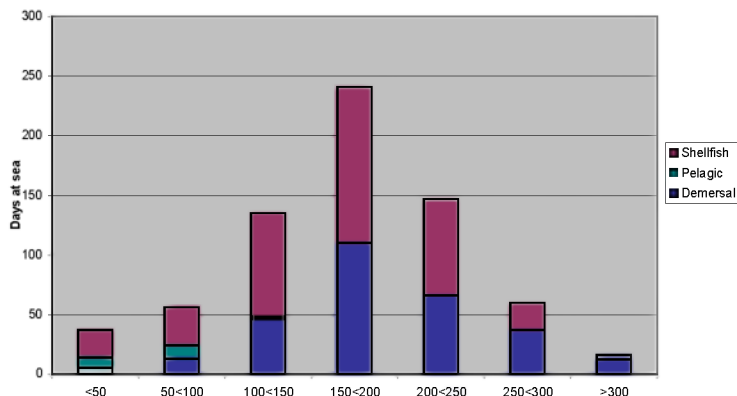


Chart 14. Effort days(1) by Scottish based over 10m vessels by vessel type, 2007



(1) £ per day. A day in which fishing activity, of whatever duration, takes place is counted as a day fished.
 (1) £ per day. A day is defined as a continuous period of 24 hours beginning at the time a vessel leaves port.

Table 33. Effort days (1) by Scottish based over 10 metres vessels by Ices area, 2007

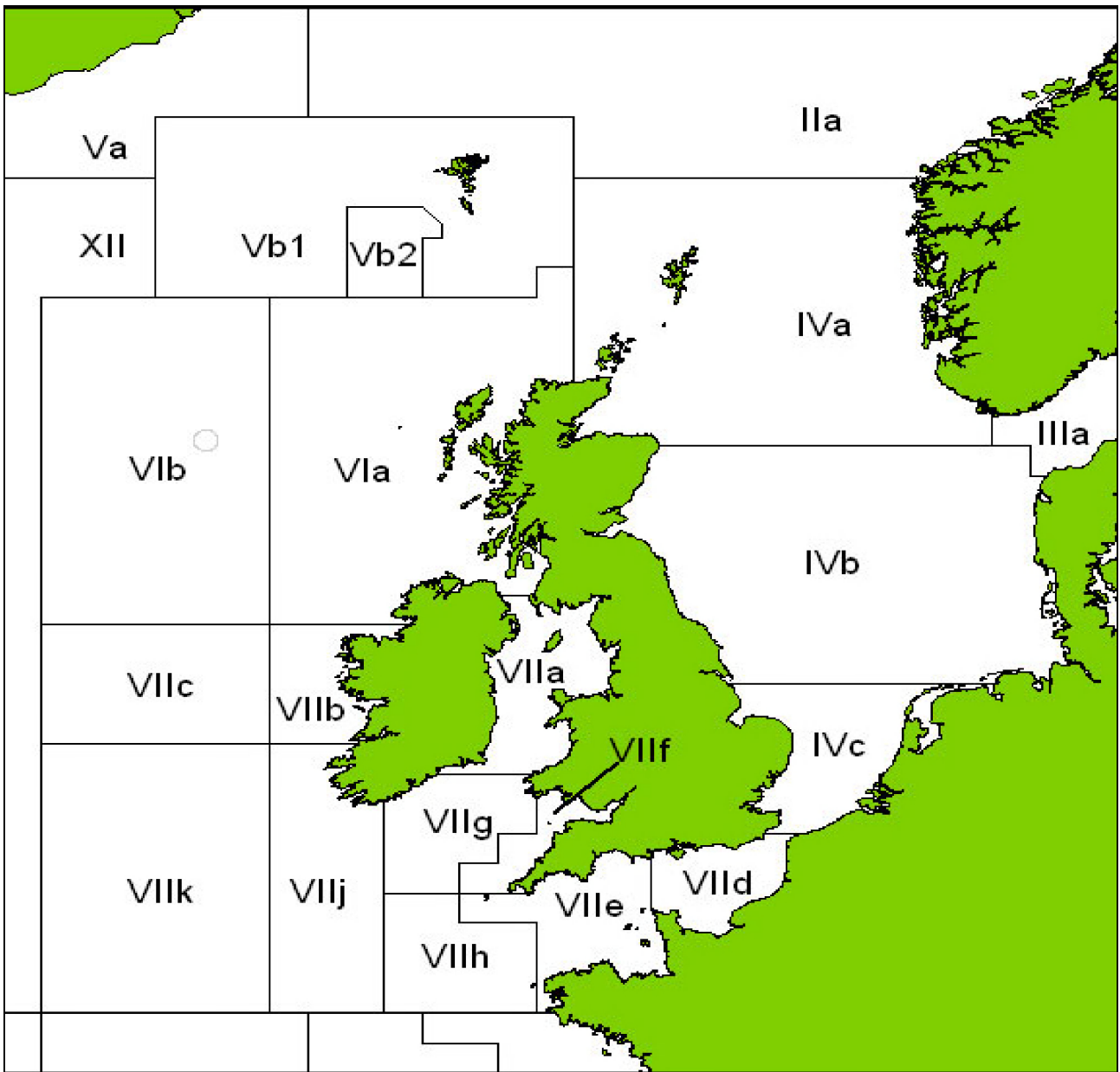
ICES AREA	Demersal	Pelagic	Shellfish
IVb, Central North Sea	8,069	35	7,365
Vb, Faroes	291	15	-
Vlj, Great Sole	720	75	-
Vlla, Irish Sea	480	-	2,337
Vllh, Little Sole	94	-	82
IVa, Northern North Sea	31,434	438	13,960
Vlc, Porcupine Bank	377	109	-
Vlb, Rockall	977	42	-
IVc, Southern North Sea	159	8	6
Vlk, West Great Sole	1,076	-	-
Vllb, West Ireland	360	22	614
Vla, West Scotland	9,603	427	37,717
Vlle, Western English Channel	261	16	582
Other	1,263	87	30
Total	55,163	1,272	62,692

Table 34. Effort days (1) by Scottish based over 10 metres vessels by length group, 2007

Length group	Demersal	Pelagic	Shellfish
>10<15	3,597	-	37,360
15<20	14,249	-	20,882
20<25	17,689	-	2,099
25<30	10,709	-	1,464
30<35	3,190	-	715
35 and over	5,730	1,272	172
Total	55,163	1,272	62,692

(1) Source : UK effort reference database : Effort figures include time spent by a vessel in travelling to the fishing ground. This is the basis reported to the EU.

Annex 2 - ICES Fishing Areas around the UK Coastline



SCOTTISH GOVERNMENT STATISTICIAN GROUP

OUR AIM

To provide relevant and reliable information, analysis and advice that meet the needs of government, business and the people of Scotland.

OBJECTIVES

1. To produce statistics and analysis relevant to user needs by
 - Developing our understanding of customer requirements to ensure statistics are kept relevant and analysis is well targeted;
 - Developing the range of statistics and analysis we produce;
 - Where practicable improving timeliness;
 - Providing more statistics disaggregated by age, gender and ethnicity;
 - Developing more data for small areas through the Neighbourhood Statistics project;
 - Contributing to production of comparable statistics across the UK and internationally.
2. To ensure effective use of our statistics by
 - Contributing more directly to policy processes inside and where possible outside government;
 - Improving access to and presentation of data and analysis;
 - Improving the advice provided on statistics.
3. To work effectively with users and providers by
 - Maintaining arrangements to consult and involve users and providers;
 - Involving users and providers in planning developments in outputs and processes;
 - Minimising the burden on data providers through dropping or streamlining collections as appropriate, to ensure the benefits of the information justify the costs of collection.
4. To develop the quality of statistics by
 - Assuring and improving quality as an integral part of data collection and analysis and through regular reviews in line with National Statistics quality strategy;
 - Developing statistical methods, systems and classifications;
 - Working with the rest of the Government Statistical Service to develop joint approaches/solutions where appropriate.
5. To assure the integrity of statistics by
 - Maintaining and promoting integrity through implementation of the National Statistics Code of Practice and related protocols;
 - Safeguarding the confidentiality of data subjects.
6. To ensure the efficient and effective delivery of statistics products and services by
 - Making best use of all sources including administrative sources;
 - Working with other analysts to maximise the contribution of our own and other analysts' work;
 - Ensuring value for money;
 - Making best use of Information and Communications Technology;
 - Ensuring effective communication within the Statistician Group.
7. To develop our workforce and competences
 - Ensuring recruitment of staff with the necessary skills and potential;
 - Ensuring development of expertise amongst existing staff;
 - Promoting and upholding the standards of the statistics profession.

This is a National Statistics publication

"This is a National Statistics publication. It has been produced to high professional standards set out in the National Statistics Code of Practice Protocol - see www.statistics.gov.uk/about_ns/cop/default.asp

These statistics undergo regular quality assurance reviews to ensure that they meet customer needs. They are produced free from any political interference."

Details of pre-release access will be provided in the Scottish Government Statistics Website under 'Forthcoming Releases'.

Correspondence and enquiries

Enquiries on Scottish Sea Fisheries Statistics 2007 should be addressed to:

Patrick McDonald
Sea Fisheries Management Division
Marine Directorate
Room 430, Pentland House
Edinburgh, EH14 1TY
Telephone: 0131 244 6441; Fax: 0131 244 6288
e-mail: fisheriesstatistics@scotland.gsi.gov.uk

General enquiries on Scottish Government statistics can be addressed to:

Office of the Chief Statistician
Scottish Government
3 Floor West Rear, St Andrews House
EDINBURGH EH1 3DG
Telephone: (0131) 244 0442; Fax: (0131) 244 0335
e-mail: statistics.enquiries@scotland.gsi.gov.uk

Advice on specific areas of Scottish Executive statistical work can be obtained from staff at the telephone numbers given below:

Scottish Executive Statistics contacts

Schools – qualifications	(0131) 244 0315
Schools – pupils and teachers	(0131) 244 1689
Further and Higher Education	(0141) 242 0273
The Economy	(0131) 244 2234
Labour market	(0141) 242 5446
Business	(0141) 242 5446
Income, Tax and Benefits	(0131) 244 2583
Local government finance	(0131) 244 7033
Environment	(0131) 244 0445
Planning	(0131) 244 0439
Equality	(0131) 244 0324
Housing	(0131) 244 7236
Transport	(0131) 244 7255
Health	(0131) 244 3432
Community Care	(0131) 244 3777
Social Justice	(0131) 244 0442
Scottish Executive personnel	(0131) 244 3926
Agricultural census and labour force	(0131) 244 6150
Fisheries	(0131) 244 6441
Courts and law	(0131) 244 2227
Recorded crime	(0131) 244 2635
Prisons	(0131) 244 2147

Other contacts for Scottish statistics

Forestry Commission	(0131) 314 6337
The Scottish Funding Councils for Higher and Further Education	(0131) 313 6575
General Register Office for Scotland - Vital statistics and publications - Population statistics, census statistics or digital boundary products	(0131) 314 4243 (0131) 314 4254

For **general enquiries about National Statistics** in the United Kingdom Government contact the National Statistics Public Enquiry Service on

020 7533 5888

minicom: 01633 812399
Email: info@statistics.gov.uk
Fax: 01633 652747
Letters: room DG/18, 1 Drummond Gate,
LONDON SW1V 2QQ

You can also find National Statistics on the internet - go to www.statistics.gov.uk

If you would like to be consulted about new or existing statistical collections or receive notification of forthcoming statistical publications, please register your interest on the Scottish Government ScotStat website at www.scotland.gov.uk/scotstat

Current contact points, e-mail addresses and the publications listed below as well as a range of other statistical publications can be found on the Scottish Executive Web site at www.scotland.gov.uk/stats

Further information on the General Register Office for Scotland is available on the website www.gro-scotland.gov.uk

Most recent Statistical Publications relating to Freshwater Fisheries and Aquaculture

Ref no.	Title	Last published	Price
	Scottish Salmon and Sea Trout Catches 2006	September 2007	
	Scottish Shellfish Farms Annual Production Survey 2007	April 2008	
	Scottish Fish Farms Annual Production Survey 2006	October 2007	

Additional copies of these publications may be purchased from **Scottish Government Publication Sales, Blackwell's Bookshop, 53 South Bridge, Edinburgh, EH1 1YS**, Telephone: 0131 622 8283 or 0131 622 8258, Fax: 0131 557 8149. Cheques should be made payable to 'Blackwell's Bookshop'.

Complaints and suggestions

If you are not satisfied with our service, please write to the Chief Statistician, Mr Rob Wishart, 3R02, St Andrews House, Edinburgh, EH1 3DG, Telephone: (0131) 244 0302, e-mail rob.wishart@scotland.gsi.gov.uk. We also welcome any comments or suggestions that would help us to improve our standards of service.

ISBN 978 0 7559 7209 8

Price £12

Crown Copyright

Brief extracts from the Crown Copyright material in this publication may be reproduced provided the source is fully acknowledged.

© Crown copyright 2008

This document is also available on the Scottish Government website:
www.scotland.gov.uk

RR Donnelley B57458 08/08

Further copies are available from
Blackwell's Bookshop
53 South Bridge
Edinburgh
EH1 1YS

Telephone orders and enquiries
0131 622 8283 or 0131 622 8258

Fax orders
0131 557 8149

Email orders
business.edinburgh@blackwell.co.uk

Fish photograph on cover courtesy of:
Tom McInnes, FRS Marine Laboratory

RR Donnelley B57458 08/08

£12.00

ISBN 978-0-7559-7209-8



9 780755 972098