

**Scottish  
Fisheries  
Statistics  
2003**



**Scottish  
Fisheries  
Statistics  
2003**

© Crown copyright 2004

ISBN 0 7559 1059-1

Scottish Executive  
St Andrew's House  
Edinburgh  
EH1 3DG

Produced for the Scottish Executive by Astron B37864 9-04

Published by the Scottish Executive, September 2004

Further copies are available from  
Blackwell's Bookshop  
53 South Bridge  
Edinburgh  
EH1 1YS

The text pages of this document are produced from 100% elemental chlorine-free, environmentally-preferred material and are 100% recyclable.

Contents	Page
<b>Vessels</b>	
Overview of The Scottish Fishing Fleet	1-4
Table 1. Active Scottish based vessels, power, by overall length group, 31st December 1993 to 2003	5
Chart 1. Landings by Scottish based vessels, 1989 to 2003	5
Chart 2. Active Scottish based vessels, 1989 to 2003	5
Table 2. Active Scottish based vessels, tonnage and power by overall length group and age group, 31st December 2003	6
Chart 3. Scottish based vessels by type, 1987 to 2003	6
Chart 4. Scottish based vessels, average age, 1989 to 2003	6
Table 3. Active Scottish based vessels: number, tonnage and power, by overall length group, 31st December 2003	7
Table 4. Active Scottish based vessels, by main fishing method, 31st December 1993 to 2003	7
Table 5. Active Scottish based vessels, by main fishing method and overall length group, 31st December 2003	7
Table 6. Active Scottish based vessels by base district and overall length group, 31st December 2003	8
Table 7. Active Scottish based over 10m vessels by overall length group, 31st December 2002 to 2003	8
Table 8. Scottish based sea fishing licences by category, 31st December 2001 to 2003	8
Table 9. Scottish based sea fishing licences, vessel capacity units by type of licence, 31st December 20083	8
Table 10. Scottish based over 10m sea fishing licences, 31st December 2002 and 2003	8
<b>Employment</b>	
Table 11. Employment in sea fishing, and Scottish labour force, 1993 to 2003	9
Table 12. Value of sea fish landings into Scotland by Scottish based vessels; fishermen employed, by region, 2003	9
Table 13. Number of fishermen employed on Scottish based vessels, 1999 to 2003	9
Table 14. Number of fishermen employed by district and employment status, 2003	9
Chart 5. Number of fishermen employed on Scottish based vessels, 1963 to 2003	9
<b>Landings</b>	
<b>Overview of Catches and Landings</b>	
Table 15. Total Allowable Catches, UK quotas and liveweight landed by UK vessels, 1999 to 2003	10-16
Chart 6. UK uptake of main quota stocks, 2003	17-19
Table 16. Fixed quota units by sea area and country, 1st January, 2004	19
Table 17. Live weight and value of landings, by species type, 1999 to 2003	19
Table 18. Voyages and landings by Scottish based over 10m vessels by landing district, 2002 and 2003	20
Chart 7. Average prices of landings into Scotland by UK vessels, by species type, 1986 to 2003	20
Table 19. Liveweight and value of landings into the UK by UK vessels, by main species and country of landing, 1999 to 2003	20
Table 20. Liveweight and value of landings into Scotland by UK vessels, by main species, 1999 to 2003	21
Table 21. Liveweight and value of landings into Scottish ports by UK vessels, by landing district and species type, 1999 to 2003	21
Table 22. Disposal of sea fish landed into Scotland by UK vessels, 1999 to 2003	22
Table 23. Liveweight and value of landings into Scotland by UK vessels, by landing district and main species, 2003	22
Chart 8. Liveweight landings into Scotland by UK vessels by species type, 1963 to 2003	23-24
Chart 9. Average prices of landings into Scotland, by species type and month, 2003	24
Table 24. Liveweight and value of landings into Scotland by foreign vessels, by main species, 1999 to 2003	25
Table 25. Liveweight and value of landings into Scotland by foreign vessels, by country of origin, 1999 to 2003	25
Table 26. Liveweight and value of landings into Scotland by foreign vessels, by landing district, 1999 to 2003	25
Table 27. Liveweight and value of landings by Scottish based vessels, by main species, 1999 to 2003	26
Chart 10. Value of landings per Scottish based over 10m vessel, by vessel type, 1987 to 2003	26
Table 28. Liveweight and value of landings abroad by Scottish based vessels, by country of landing, 1999 to 2003	26
Table 29. Liveweight and value of landings from specified ICES areas by Scottish based vessels, by main species, 2003	26
Table 30. Liveweight and value of landings by Scottish based vessels, by main species and overall vessel length group, 2003	27
Chart 11. Value of landings by Scottish based vessels by species type, 1987 to 2003	27
Table 31. Liveweight and value of landings by Scottish based vessels, by main species gear, 2003	28
Chart 12. Liveweight landings by Scottish based vessels by quarter, 2003	29-30
Chart 13. Average value of landings per day at sea by Scottish based over 10 metres vessels by vessel type, 2003	30
Chart 14. Days at sea by Scottish based over 10 metres vessels by vessel type	30
Table 32. Days fished by Scottish based over 10 metres vessels by lces area, 2003	30
Table 33. Days fished by Scottish based over 10 metres vessels by length group, 2003	30
Annex 1 Map of port districts and ports in Scotland	
Annex 2 ICES fishing areas around the UK coastline	

## **1. Overview of The Scottish Fishing Fleet**

### **1.1 The regulation of the UK Fleet**

The structure and capacity of the UK and Scottish fishing fleets has, since 1983, been dictated primarily by the EU Common Fisheries Policy. Between 1997 and 2002 fleet structure was managed within the CFP through the fourth Multi Annual Guidance Programme (MAGP) designed to tailor fleet capacity to available fish stocks across the EU. Under this programme the UK fishing fleet was divided into eight of segments defined mainly by broad fishing method, (Pelagic Gears, Beam trawl, Demersal seines and nephrops, Lines & Nets, Shellfish-Mobile, Shellfish-Fixed, Distant Water and vessels under 10 metres) and capacity limits or effort reduction targets set for each segment. MAGP IV has now ended and has been replaced by global effort ceilings at member state level controlled through a system of entry/exit controls. In simple terms, a vessel can only enter the fleet when equivalent capacity has exited the fleet.

At a UK level, restrictive (closed) licensing has been the main UK Government instrument to bring the activities of the UK fishing fleet into line with MAGP and UK aims on fleet and catch management. Aside from a few limited exceptions, all vessels engaged in commercial sea fishing are required to hold a licence issued by UK Fisheries Departments. Current measures to manage the capacity of the UK fleet include an halt to the issuing of new licenses and detailed rules to govern the transfer and aggregation of existing licences. These licensing rules, including capacity penalties imposed when licences are transferred or aggregated, form the mechanism for bringing the capacity of the UK fleet into line with EU and UK objectives.

The UKs restrictive licensing controls, in combination with successive decommissioning schemes (1994-1997; 2001-2002 and 2003), explain many of the fleet statistics and trends within this publication and the figures are interpreted in this context where appropriate.

### **1.2 Fleet size**

2003 saw a continuation of recent changes to the Scottish fleet, either directly or indirectly prompted by measures designed to conserve vulnerable whitefish stocks, particularly (North Sea) Cod. The most important of these measures has been the 2003 decommissioning scheme under which 20 vessels over 10 metres in length were scrapped at Fraserburgh, 10 at Buckie, 6 at Lerwick, 5 at Peterhead, 2 at Aberdeen and one each at Kirkwall, Lochinver and Ayr.

There were 2,395 active fishing vessels based in Scotland at the end of 2003, a net reduction of 118 since 2002 (4.7 per cent), just under half of which is attributable to the 46 vessels decommissioned in 2003. Table I below shows that there were



reductions in the number of active vessels at 13 out of 18 districts, but 50 per cent of the Scottish total reduction in vessel numbers occurred in the North East of Scotland; where most of the whitefish fleet is based and where most vessels were decommissioned.

*Table 1: Changes in numbers of active Scottish based vessels 2002-03, by district.*

District	Number of active vessels		Change
	2002	2003	
<i>Oban</i>	148	152	+4
<i>Portree</i>	139	140	+1
<i>Stornoway</i>	336	336	0
<i>Kinlochbervie</i>	29	29	0
<i>Ullapool</i>	65	65	0
<i>Lochinver</i>	22	21	-1
<i>Pittenweem</i>	111	109	-2
<i>Orkney</i>	173	169	-4
<i>Mallaig</i>	102	98	-4
<i>Ayr</i>	158	152	-6
<i>Aberdeen</i>	96	89	-7
<i>Wick</i>	131	123	-8
<i>Eyemouth</i>	122	111	-11
<i>Peterhead</i>	124	112	-12
<i>Buckie</i>	90	77	-13
<i>Shetland</i>	222	208	-14
<i>Campbeltown</i>	196	182	-14
<i>Fraserburgh</i>	249	222	-27
<b>Total</b>	<b>2,513</b>	<b>2,395</b>	<b>-118</b>

**Source:** Table 6 and Scottish Fisheries Statistics 2002

These reductions have only affected vessels in the fleet greater than 10 metres in overall length. The number of vessels over 10 metres in length has been declining steadily since at least 1989 (Chart 2) and in 2003 stood at 763, down by 79 since 2002 and 570 fewer than in 1993 (-43 per cent; Table 1). The decline has affected all of the main catching sectors, demersal, pelagic and shellfish to a varying degree. The number of demersal vessels fell by 58 (15 per cent) in 2003 (Table 4), again largely as a result of decommissioning and the Scottish over 10 metres demersal fleet is now 48 per cent smaller than in 1993.

The number of vessels in the 10 metres and under fleet (1,632) has changed little since 2002 and has been relatively stable at around 1,600 vessels since 1993 (Table 1). It should be noted however, that the time series for the 10m & under segment suffers from an inconsistency that affects the recorded fleet size before and after

1993. In 1993 restrictive licensing was extended to all vessels of 10 metres and under in overall length, requiring all such vessels to apply for a licence to fish. The number of licence applications for these vessels revealed many more actively fishing than had been previously recorded.

### **1.3 Vessel capacity**

#### **1.3.1 Overall length**

The average length of vessel in the over 10m fleet was 19.22 metres in 2003, a shortening of 42 cm on the 2002 figure. This reduction represents a reversal of a previous trend towards increasing vessel length, seen up until 2000. Since 2000, the average within the over 10m segment has fallen by 82 cm and has returned to a level last seen in 1993 (Table 1).

#### **1.3.2 Engine Power**

Previous years statistics on engine power in the Scottish fleet have been underestimated to an unknown degree, due the inclusion of vessels with engines operating at a higher power than permitted on their licences. In November 1999 in response to this problem, Fisheries Departments introduced special (concessionary) licensing arrangements and a timetable for compliance with engine power controls. Under the compliance timetable licence holders who have admitted to underdeclaration, have until the end of 2004 to ensure that either: (i) their true engine power is registered and to have acquired enough licence entitlement to cover this, or (ii) to have de-rated their engine to the figure on their licence. In practice, most have chosen to acquire extra licences to cover their operational engine power. Consequently, it needs to be borne in mind that after 1999, the trends in average engine power shown in Table 1 are complicated by the effect of an increasing number of owners declaring their true, higher engine power. Nevertheless, while this bias makes the actual rate of change unclear, it is clear that Scottish based vessels are now fishing with greater engine power on average than in the past.

The total registered engine power of the over 10m Scottish fleet was 346 thousand kW in 2003 (Table 1), a fall of 4 per cent since 2002 and 16 per cent lower than in 1993. However, average engine power, at 453 kW, has increased 6 per cent since 2002 and is 47 per cent greater than in 1993. The opposing trends of increasing total fleet engine capacity and increasing average engine power per can be explained by a combination of factors: (i) the 43 per cent reduction in the over 10 m fleet since 1993 (Section 1.1); (ii) the “natural wastage” of licensed engine power that often accompanies the aggregation of several licences onto a single vessel<sup>1</sup> and; (iii) since 1999, the progressive correction of under declared engine power, in line with the concessionary licensing arrangements noted above.

---

<sup>1</sup> Occurs when the sum of the engine power capacities attached to the licences used in an aggregation, exceeds the maximum engine power of the vessel on which the aggregate licence is used. The excess engine power entitlement is then effectively lost from the fleet total.

## 1.4 Employment

Employment in the catching sector in 2003, fell by 9 per cent to 5,276 (Table 11), while the number of fishermen regularly employed on Scottish based vessels at 3,968, was 471 fewer than in 2002 (Table 14). Decommissioning in 2003 contributed substantially to this reduction in employment, although any precise estimate of its effect is confounded by economic and quota related factors.

The number of irregularly employed (mainly part-time) fishermen in 2003 remained at 2002 levels.

As with the fleet reductions, the loss in full time employment has occurred disproportionately in North East Scotland where the majority of the demersal fleet is based and where decommissioning was concentrated in 2003: Peterhead, Fraserburgh, Buckie and Aberdeen together lost 401 regularly employed in fishing, although this was partially offset by increases at some west coast districts: Stornoway, Ullapool and Oban together gained 98 regularly employed fishermen in 2003. The general decline in demersal fisheries had less of an impact on employment in west coast districts where local vessels are predominantly involved in fishing for Nephrops, scallops and other shellfish.



Table 1. Active Scottish based vessels and power, by overall length group, 31st December 1993 to 2003

		10 metres & under	>10 <15 metres	15<20 metres	20<25 metres	25<30 metres	30<35 metres	35 metres & over	Total	Over 10 metres	
										Number	Average
Number	1993	1,562	438	379	300	118	30	68	2,895	1,333	19.23
	1994	1,703	430	356	289	120	28	68	2,994	1,291	19.26
	1995	1,583	397	331	279	121	23	58	2,792	1,209	19.26
	1996	1,668	357	305	260	132	22	62	2,806	1,138	19.61
	1997	1,659	348	298	247	133	18	67	2,770	1,111	19.69
	1998	1,628	316	272	229	134	17	65	2,661	1,033	19.88
	1999	1,604	298	263	209	128	19	64	2,585	981	19.95
	2000	1,622	290	254	202	126	22	64	2,580	958	20.04
	2001	1,645	284	260	203	118	23	62	2,595	950	19.98
	2002	1,671	280	237	152	92	19	62	2,513	842	19.64
2003	1,632	274	225	123	67	16	58	2,395	763	19.22	
Total power (kW)	1993	63,892	48,736	83,358	109,554	60,304	20,327	90,028	476,199	412,307	309.31
	1994	68,812	48,657	79,973	107,084	61,545	18,088	90,606	474,765	405,953	314.45
	1995	64,789	45,725	74,874	106,107	62,479	14,146	80,987	449,107	384,318	317.88
	1996	70,949	42,234	70,392	101,103	69,596	13,682	90,725	458,681	387,732	340.71
	1997	71,419	41,489	68,837	97,373	70,392	11,037	97,113	457,661	386,241	347.65
	1998	70,686	37,910	63,511	91,374	71,428	12,771	102,290	449,970	379,284	367.17
	1999	71,684	35,686	61,630	84,070	69,633	15,002	101,723	439,428	367,744	374.87
	2000	76,742	35,234	60,417	83,209	70,070	17,601	106,312	449,584	372,843	389.19
	2001	80,697	35,396	64,947	85,634	66,966	19,362	120,971	473,972	393,276	413.97
	2002	82,690	35,906	60,956	66,308	54,511	15,368	127,089	442,827	360,138	427.72
2003	82,646	36,504	58,779	54,891	39,593	13,215	142,762	428,391	345,744	453.14	

Scottish based vessels are those licensed at a Scottish port; Scottish registered vessels are those registered at a Scottish port on the Register of Shipping and Seamen. From the beginning of 1993 there was a requirement that all 10 metres and under vessels should be licensed.

Chart 1. Landings by Scottish based vessels, 1989 to 2003

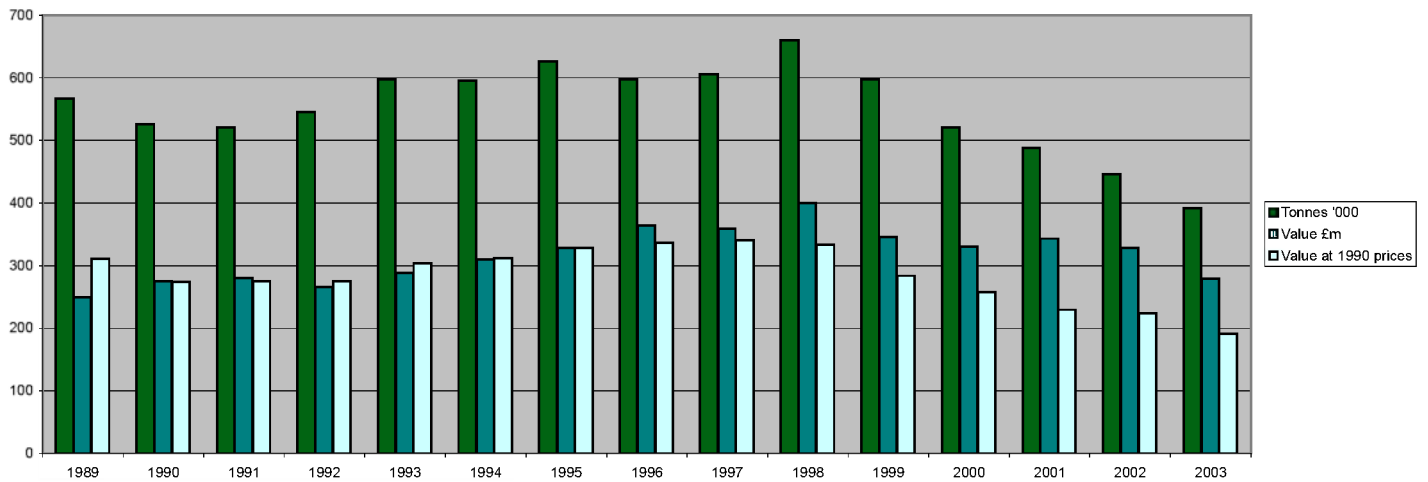
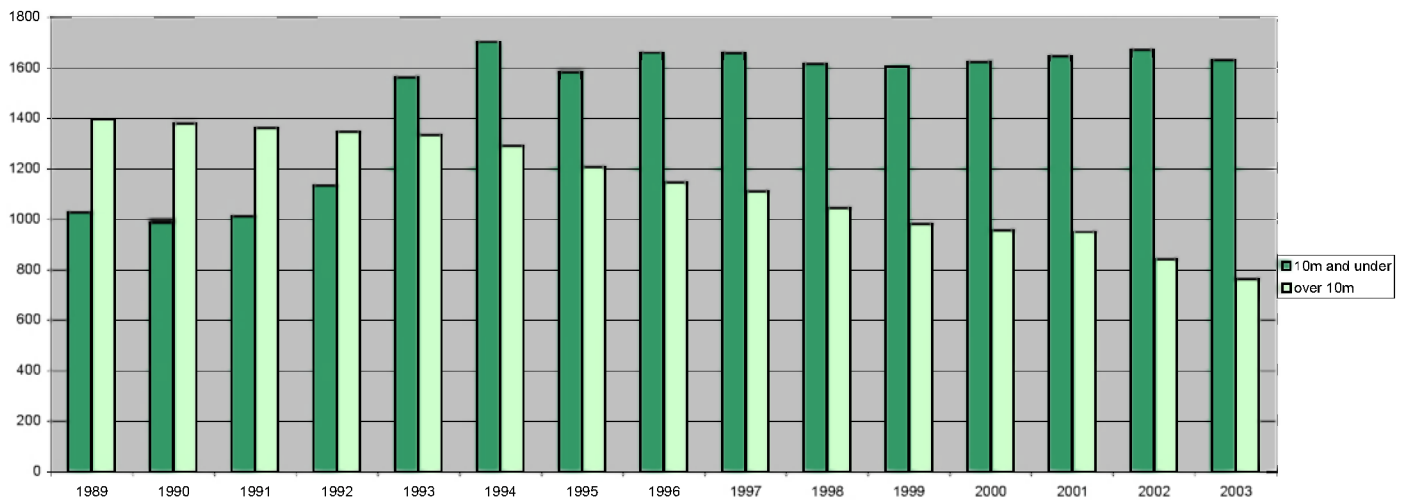


Chart 2. Active Scottish based vessels, 1989 to 2003



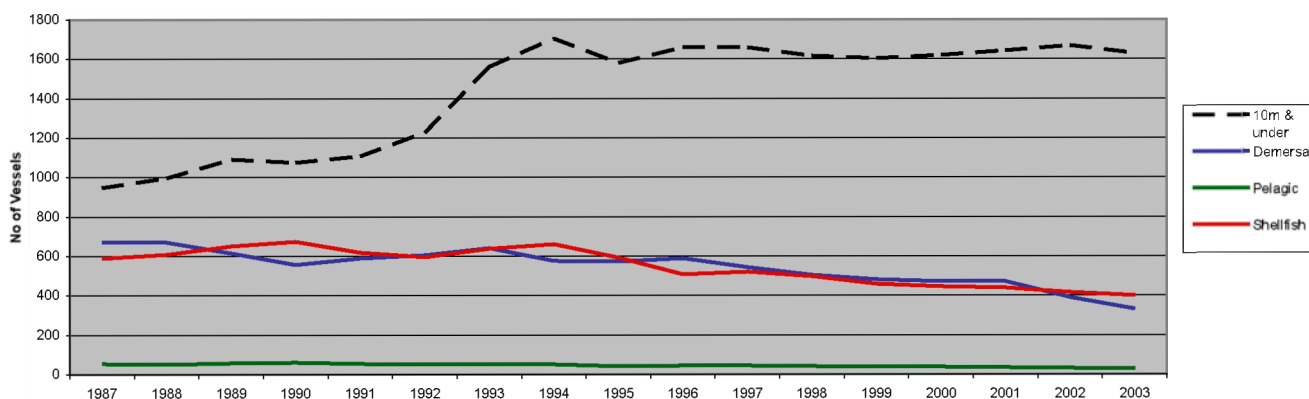
Increase in number of 10m & under vessels in 1993 due to changes in licensing requirements

Table 2. Active Scottish based vessels, tonnage and power by overall length group and age group, 31st December 2003

	10 metres & under	>10 <15 metres	15<20 metres	20<25 metres	25<30 metres	30<35 metres	35 metres & over	Total	Over 10 metres
<b>Number</b>									
Under 10 years	206	22	27	30	20	5	25	335	129
10<15	258	43	10	14	11	2	4	342	84
15<20	233	48	23	33	17	1	4	359	126
20<25	220	38	33	17	6	0	13	327	107
25<30	145	29	29	16	6	2	3	230	85
30<35	91	45	56	6	4	3	2	207	116
35 years & over	146	33	44	6	3	3	6	241	95
Not known	333	16	3	1	0	0	1	354	21
<b>Total</b>	<b>1632</b>	<b>274</b>	<b>225</b>	<b>123</b>	<b>67</b>	<b>16</b>	<b>58</b>	<b>2395</b>	<b>763</b>
<b>Average age (years)</b>	<b>16.4</b>	<b>21.7</b>	<b>25.2</b>	<b>17.3</b>	<b>16.0</b>	<b>20.9</b>	<b>15.3</b>	<b>17.8</b>	<b>21.0</b>
<b>Total tonnage</b>									
Under 10 years	1,058	500	3,766	6,476	7,192	2,707	37,870	59,569	58,511
10<15	919	634	871	2,457	2,837	587	2,155	10,460	9,541
15<20	763	834	2,452	5,400	3,992	375	1,726	15,542	14,779
20<25	830	611	2,762	2,312	1,118	0	7,462	15,095	14,265
25<30	583	381	1,800	2,121	1,042	517	1,358	7,803	7,219
30<35	368	636	2,837	668	711	544	723	6,487	6,119
35 years & over	472	477	1,775	623	407	645	2,154	6,553	6,081
Not known	1,016	244	298	57	0	0	2,194	3,810	2,793
<b>Total</b>	<b>6,008</b>	<b>4,318</b>	<b>16,562</b>	<b>20,115</b>	<b>17,299</b>	<b>5,375</b>	<b>55,642</b>	<b>125,317</b>	<b>119,308</b>
<b>Average tonnage</b>	<b>4</b>	<b>16</b>	<b>74</b>	<b>164</b>	<b>258</b>	<b>336</b>	<b>959</b>	<b>52</b>	<b>156</b>
<b>Total power (kW)</b>									
Under 10 years	18,960	4,570	10,709	17,750	15,156	6,408	93,772	167,325	148,365
10<15	13,969	7,512	3,068	6,334	6,059	1,631	5,992	44,565	30,596
15<20	10,308	6,582	6,964	13,626	9,311	855	5,793	53,439	43,131
20<25	10,784	4,504	10,039	6,844	3,025	0	22,704	57,900	47,116
25<30	6,306	2,978	6,731	6,265	3,004	1,297	3,454	30,036	23,729
30<35	3,280	4,504	12,353	1,937	1,709	1,848	2,314	27,944	24,665
35 years & over	3,818	3,079	8,091	1,807	1,329	1,176	3,673	22,973	19,155
Not known	15,222	2,775	824	328	0	0	5,060	24,209	8,987
<b>Total</b>	<b>82,646</b>	<b>36,504</b>	<b>58,779</b>	<b>54,891</b>	<b>39,593</b>	<b>13,215</b>	<b>142,762</b>	<b>428,391</b>	<b>345,744</b>
<b>Average power</b>	<b>51</b>	<b>133</b>	<b>261</b>	<b>446</b>	<b>591</b>	<b>826</b>	<b>2461</b>	<b>179</b>	<b>453</b>

Since the unit of tonnage measurement has been changing from registered tonnage to gross tonnage, incrementally throughout the fleet, year-on-year comparisons may be unreliable

Chart 3. Scottish based vessels by type, 1987 to 2003



From the beginning of 1993 there was a requirement that all 10 metres and under vessels should be licensed.

Chart 4. Scottish based vessels, average age, 1989 to 2003

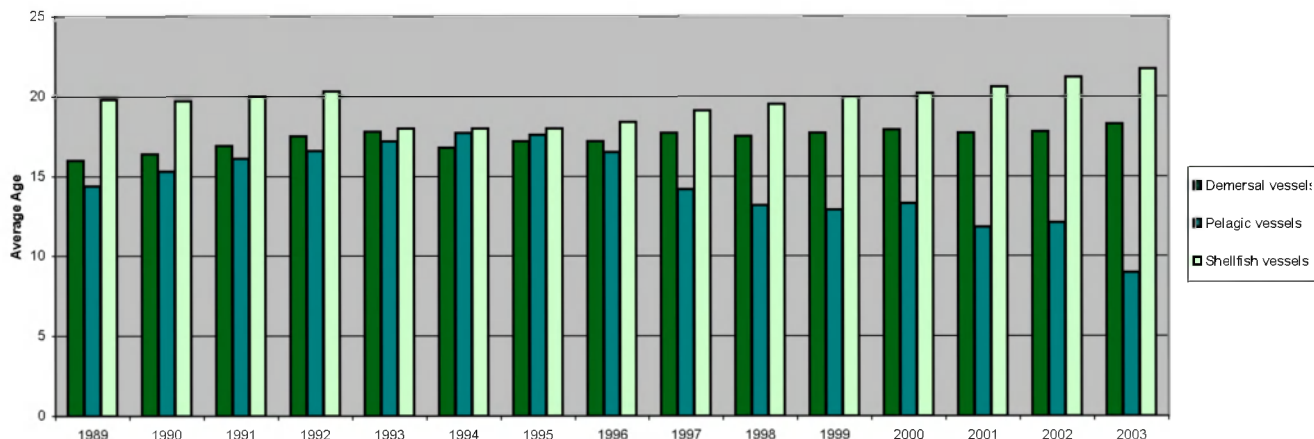


Table 3. Active Scottish based vessels: number, tonnage and power by overall length group, 31st December 2003

Length	Tonnes	Vessels	Total tonnes	Length	kW	Vessels	Total power
10m & under	<40	1,632	6,008	10 m & under	<40	888	15,823
>10 <15	<40	269	4,098	>10<15	40<75	353	19,259
	40<60	5	219		75<150	310	31,600
	Total	274	4,318		150<225	65	12,003
			225<375		16	3,961	
15<20	<40	42	1,350	Total	1,632	82,646	
	40<60	67	3,197	>10<15	<40	3	104
	60<80	35	2,380	40<75	34	2,141	
	80<100	25	2,224	75<150	155	16,640	
	100<150	42	4,995	150<225	55	10,274	
	150<200	14	2,416	225<375	26	6,823	
Total	225	16,562	375<550	1	522		
20<25	40<60	1	57	Total	274	36,504	
	60<80	3	205	15<20	75<150	20	2,566
	80<100	7	615	150<225	74	14,248	
	100<150	43	5,588	225<375	108	31,608	
	150<200	46	7,903	375<550	22	9,737	
	200<300	19	4,480	550<750	1	620	
300<500	4	1,266	Total	225	58,779		
Total	123	20,115	20<25	150<225	2	406	
25<30	80<100	1	97	225<375	40	13,466	
	100<150	1	145	375<550	60	27,131	
	150<200	14	2,405	550<750	19	12,116	
	200<300	32	7,638	Over 750	2	1,772	
	300<500	19	7,014	Total	123	54,891	
Total	67	17,299	25<30	150<225	2	442	
30<35	150<200	4	741	225<375	2	592	
	200<300	5	1,182	375<550	24	11,690	
	300<500	2	745	550<750	36	23,632	
	Over 500	5	2,707	Over 750	3	3,237	
	Total	16	5,375	Total	67	39,593	
35 & over	200<300	1	295	30<35	225<375	1	354
	300<500	23	9,045	375<550	3	1,365	
	Over 500	34	46,302	550<750	6	4,021	
	Total	58	55,642	Over 750	6	7,475	
Total	Under 40	1,943	11,456	Total	16	13,215	
	40<60	73	3,474	35 & over	375<550	3	1,507
	60<80	38	2,585	550<750	6	4,049	
	80<100	33	2,937	Over 750	49	137,206	
	100<150	86	10,728	Total	58	142,762	
	150<200	78	13,465	Total	Under 40	891	15,926
	200<300	57	13,595		40<75	387	21,400
	300<500	48	18,070		75<150	485	50,806
	Over 500	39	49,009		150<225	198	37,373
	Total	2,395	125,317		225<375	193	56,805
			375<550		113	51,952	
			550<750	68	44,438		
			Over 750	60	149,690		
			Total	2,395	428,391		

Since the unit of tonnage measurement has been changing from registered tonnage to gross tonnage, incrementally throughout the fleet, year-on-year comparisons may be unreliable

Table 4. Active Scottish based vessels by main fishing method, 31st December 1993 to 2003

	10m & under				Over 10m										Total			
	Nephrops trawl	Creel fishing	Other	Total	Pelagic				Demersal				Shellfish			Total		
					Purse seine	Pelagic trawl	Other	Total	Trawl	Seine	Lines	Other	Total	Nephrops trawl			Other	Total
1993	47	1,421	94	1,562	37	15	-	52	417	192	20	12	641	357	283	640	1,333	2,895
1994	50	1,527	127	1,704	37	14	-	51	371	174	22	11	578	366	296	662	1,291	2,995
1995	43	1,448	97	1,588	34	15	-	49	374	146	14	9	543	322	254	576	1,168	2,756
1996	53	1,520	109	1,682	33	17	-	50	409	122	14	8	553	300	255	555	1,158	2,840
1997	62	1,480	117	1,659	28	17	-	45	418	104	8	14	544	277	245	522	1,111	2,770
1998	63	1,440	125	1,628	25	17	-	42	390	96	5	14	505	248	238	486	1,033	2,661
1999	73	1,411	120	1,604	21	19	-	40	375	87	4	15	481	236	224	460	981	2,585
2000	91	1,404	127	1,622	19	19	-	38	371	85	4	12	472	223	225	448	958	2,580
2001	99	1,421	125	1,645	9	27	-	36	379	80	5	9	473	223	218	441	950	2,595
2002	100	1,440	131	1,671	8	25	-	33	326	47	6	11	390	208	211	419	842	2,513
2003	102	1,406	124	1,632	6	21	2	29	281	36	4	11	332	194	208	402	763	2,395

From the beginning of 1993 there was a requirement that all 10 metres and under vessels should be licensed.

Table 5. Active Scottish based vessels, by main fishing method and overall length group, 31st December 2003

	<8 metres	8-10 metres	>10-12 metres	>12<15 metres	15-18 metres	>18-24 metres	>24-30 metres	>30-40 metres	>40-50 metres	over 50 metres	Total
Demersal single trawl	4	19	5	13	35	95	51	16	1	0	239
Demersal pair trawl	0	0	0	0	4	13	8	0	0	0	25
Seine net	0	0	0	0	3	17	13	1	0	0	34
Lines	18	7	0	0	0	0	2	2	0	0	29
Demersal pair seine	0	0	0	0	0	1	1	0	0	0	2
Demersal gill nets	8	8	3	1	0	0	1	6	0	0	27
Demersal twin/mult trawl	0	1	0	0	1	15	6	0	0	0	23
Beam trawl	0	1	0	1	0	1	1	6	9	0	19
Other demersal	1	0	0	0	0	0	0	0	0	0	1
Demersal total	31	36	8	15	43	142	83	31	10	-	399
Purse seine	0	0	0	0	0	0	0	0	4	2	6
Pelagic trawl	0	0	0	0	0	0	0	0	2	19	21
Other pelagic	0	0	0	0	0	0	0	0	0	2	2
Pelagic total	0	0	0	0	0	0	0	0	6	23	29
Creel fishing	997	409	91	15	6	4	0	0	0	0	1,522
Nephrops trawl	2	100	61	52	63	16	2	0	0	0	296
Mechanical dredging	2	13	13	12	31	21	4	4	0	0	100
Suction dredging	0	1	2	0	0	0	0	0	0	0	3
Shell fishing by hand	31	8	5	0	0	0	0	0	0	0	44
Shrimp trawl	0	2	0	0	0	0	0	0	0	0	2
Shellfish total	1,032	533	172	79	100	41	6	4	0	0	1,967
Total	1,063	569	180	94	143	183	89	35	16	23	2,395

Table 6. Active Scottish based vessels by base district and overall length group, 31st December 2003

	<8 metres	8-10 metres	>10-12 metres	>12<15 metres	15-18 metres	>18-24 metres	>24-30 metres	>30-40 metres	>40-50 metres	over 50 metres	Total
Eyemouth	39	35	14	7	7	8	1	0	0	0	111
Pittenweem	58	28	9	6	3	4	1	0	0	0	109
Aberdeen	50	20	4	3	2	7	2	1	0	0	89
Peterhead	21	16	3	2	3	21	23	10	9	4	112
Fraserburgh	60	37	3	8	14	56	30	1	3	10	222
Buckie	14	18	2	0	7	24	9	2	1	0	77
Wick	70	22	13	3	5	8	2	0	0	0	123
Total east coast	312	176	48	29	41	128	68	14	13	14	843
Orkney	89	38	22	10	4	1	3	2	0	0	169
Shetland	103	60	10	4	4	8	9	0	2	8	208
Stornoway	196	72	31	11	21	3	0	0	1	1	336
Total Islands	388	170	63	25	29	12	12	2	3	9	713
Kinlochbervie	17	7	1	0	1	3	0	0	0	0	29
Lochinver	11	4	1	1	1	3	0	0	0	0	21
Ullapool	27	17	10	5	5	1	0	0	0	0	65
Mallaig	34	21	7	7	15	13	1	0	0	0	98
Oban	73	49	17	2	6	4	1	0	0	0	152
Campbeltown	91	40	14	10	25	2	0	0	0	0	182
Ayr	50	24	7	10	18	17	7	19	0	0	152
Portree	60	61	12	5	2	0	0	0	0	0	140
Total west coast	363	223	69	40	73	43	9	19	0	0	839
Total	1063	569	180	94	143	183	89	35	16	23	2355

A district is a geographical area within which there are a number of creeks or ports

Table 7. Active Scottish based over 10 metres vessels by overall length group, 31st December 2002 to 2003

	>10 <15 metres	15<20 metres	20<25 metres	25<30 metres	30<35 metres	35 metres & over
Active Scottish vessels, 31st December 2002	284	234	151	92	19	62
Continued to be based in Scotland	263	217	120	66	16	48
Transferred to another UK port	6	3	-	-	-	2
Became inactive	15	14	31	26	3	12
Transferred from another UK port	5	4	3	1	-	2
Became active	1	-	-	-	-	-
Newly built vessels	5	4	-	-	-	8
Active Scottish vessels, 31st December 2003	274	225	123	67	16	58

Table 8. Scottish based sea fishing licences by category, 31st December 2001 to 2003

	Vessel licences				Entitlements				Total			
	Category A	Category B	Category C	<=10m	Category A	Category B	Category C	<=10m	Category A	Category B	Category C	<=10m
2001	788	79	66	1,587	52	7	3	66	840	86	69	1,653
2002	675	85	68	1,605	60	5	2	57	735	90	70	1,662
2003	614	86	65	1,599	49	1	3	78	663	87	68	1,677

In 2003, includes 29 pelagic licences (category A) on vessels

Table 9. Scottish based sea fishing licences: vessel capacity units by type of licence, 31st December 2003

	On vessels				Entitlements				Total			
	Category A	Category B	Category C	<=10m	Category A	Category B	Category C	<=10m	Category A	Category B	Category C	<=10m
Pelagic licences	66,885	-	-	-	7,104	-	-	-	73,989	-	-	-
Other licences	176,515	9,531	10,203	70,441	14,736	78	302	2,613	191,250	9,609	10,505	73,054

Table 10. Scottish based, over 10 metres sea fishing licences, by category, 31st December 2002 and 2003

	On vessels			Entitlements		
	Category A	Category B	Category C	Category A	Category B	Category C
Scottish based licences, 31st December 2002	675	85	68	60	5	2
Remained on Scottish based vessels	583	80	63	19	1	1
Became Scottish entitlements	30	-	2	38	4	-
Transferred/aggregated to other UK vessels	9	3	2	1	-	1
Other losses	53	2	1	2	-	-
Placed on vessel from Scottish entitlements	31	6	2	30	-	2
Transferred/aggregated from other UK ports	-	-	-	-	-	-
Scottish based licences, 31st December 2003	614	86	65	49	1	3

Table 11. Employment in sea fishing and Scottish labour force, 1993 to 2003

	1993	1994	1995	1996	1997	1998	1999	2000	2001	2002	2003
Total employed in fishing industry	9,420	8,610	8,395	8,084	8,194	7,771	7,330	6,902	6,637	5,795	5,276
Total labour force ('000)	2,198	2,274	2,280	2,278	2,299	2,298	2,301	2,359	2,357	2,369	2,412
Employment in fishing as % of labour force	0.4	0.4	0.4	0.4	0.4	0.3	0.3	0.3	0.3	0.2	0.2

Source : Labour Force Survey; Scottish Fishery Protection Agency

Table 12. Value of sea fish landings into Scotland by Scottish based vessels; fishermen employed, by region, 2003

Region	Landings (1)	Labour	Fishermen	As %
	2003	force (2)	employed	labour force
Eilean Siar, Orkney & Shetland	41.7	33	1,308	3.96
Aberdeenshire	82.0	118	1,259	1.07
Angus	0.8	51	58	0.11
Argyll & Bute	12.7	40	609	1.52
City of Aberdeen	12.1	105	58	0.06
City of Edinburgh	0.0	220	4	0.00
Dumfries and Galloway	0.4	75	79	0.11
East Lothian	0.7	41	56	0.14
Fife	1.9	171	128	0.07
Highland	54.1	98	813	0.83
Moray	4.4	42	263	0.63
North Ayrshire	0.3	65	46	0.07
Scottish Borders	3.5	54	119	0.22
South Ayrshire	5.6	52	476	0.92
Total	220.3	1,165	5,276	0.45

(1) £ million (2) thousands, Office for National Statistics

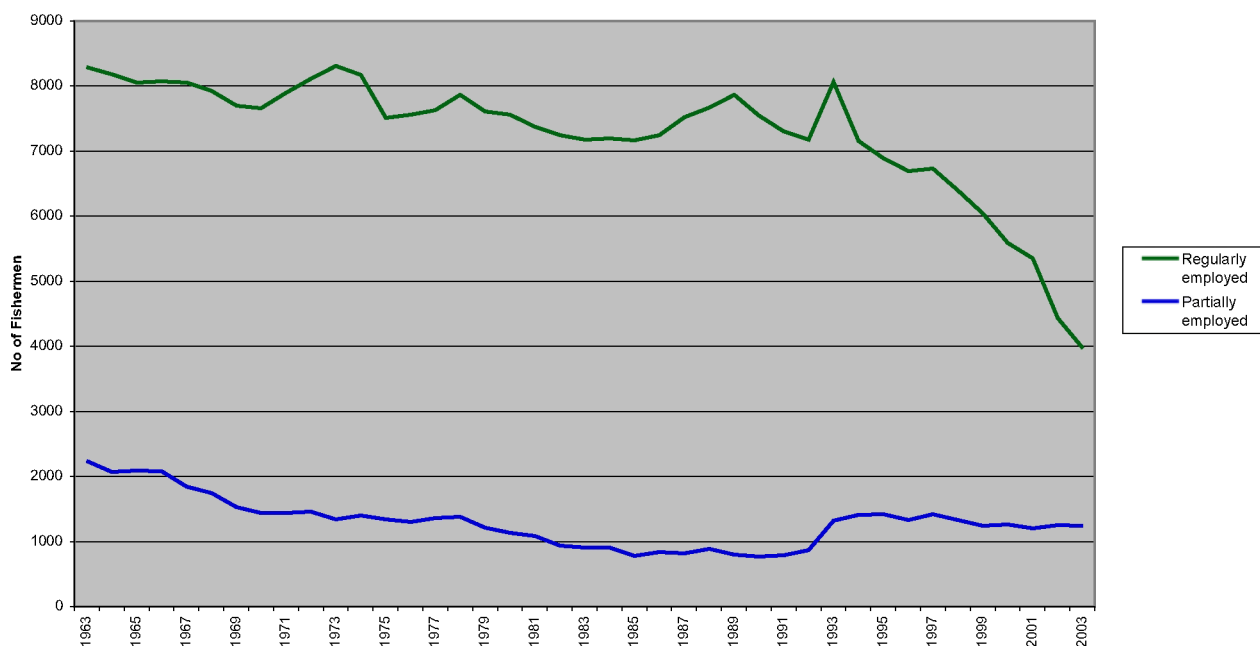
Table 13. Number of fishermen employed on Scottish based vessels, 1999 to 2003

	1999	2000	2001	2002	2003
Regularly employed	6,042	5,594	5,353	4,439	3,968
Irregularly employed	1,242	1,260	1,203	1,251	1,238
Crofters	46	48	81	105	70
Total	7,330	6,902	6,637	5,795	5,276

Table 14. Number of fishermen employed by district and employment status, 2003

	Regularly employed	Irregularly employed	Crofters	Total
Eyemouth	164	15	0	179
Pittenweem	103	25	0	128
Aberdeen	95	58	0	153
Peterhead	362	52	0	414
Fraserburgh	699	109	0	808
Buckie	241	24	0	265
Wick	189	0	0	189
Orkney	245	91	0	336
Shetland	273	187	0	460
Stornoway	219	255	38	512
Kinlochbervie	39	0	2	41
Lochinver	36	4	3	43
Ullapool	98	7	0	105
Mallaig	170	20	0	190
Portree	79	146	0	225
Oban	240	40	27	307
Campbeltown	255	73	0	328
Ayr	461	132	0	593
All districts	3,968	1,238	70	5,276

Chart 5 Number of fishermen employed on Scottish based vessels, 1963 to 2003



## 2. Overview of Catches and Landings

### 2.1 Total landings into Scotland

The total quantity landed into Scottish ports by all vessels and all nationalities in 2003 was, at 379 thousand tonnes, virtually unchanged from 2002 (Table 17) but 3 per cent lower than in 1999. There has however, been a substantial switch in the contribution of the demersal and pelagic sectors over this period, with demersal species declining from 52 per cent to 35 per cent of all volume landed while pelagic species have increased from 35 per cent to 52 per cent of all volume landed (calculated from Table 17). This switch has been associated with quota reductions for all of the most important demersal stocks since 1999: the combined quota for key demersal stocks<sup>1</sup> having fallen by 49 per cent over this period while that for key pelagic stocks has remained relatively constant (Table II). Landings of shellfish species are generally not subject to quota restrictions and remained stable at 13 per cent of total landings over this period.

*Table II: Combined UK quota ('000 tonnes) for key demersal and pelagic stocks\* 1999-2003*

Quota ('000 tonnes)						Change	
	1999	2000	2001	2002	2003	1999 - 2003	
<i>Combined key demersal stocks</i>	251	210	159	186	128	<b>-123 (-49%)</b>	
<i>Combined key pelagic stocks</i>	278	287	292	287	282	<b>+4 (+1%)</b>	

\* defined in footnote 1

---

<sup>1</sup> Key demersal stocks are considered to be North Sea & West of Scotland stocks of Cod, Haddock, Monkfish, Whiting, Saithe, Plaice and Norway Lobster. Key pelagic stocks are considered to be North Sea & West of Scotland stocks of Mackerel, Herring and Horse Mackerel.

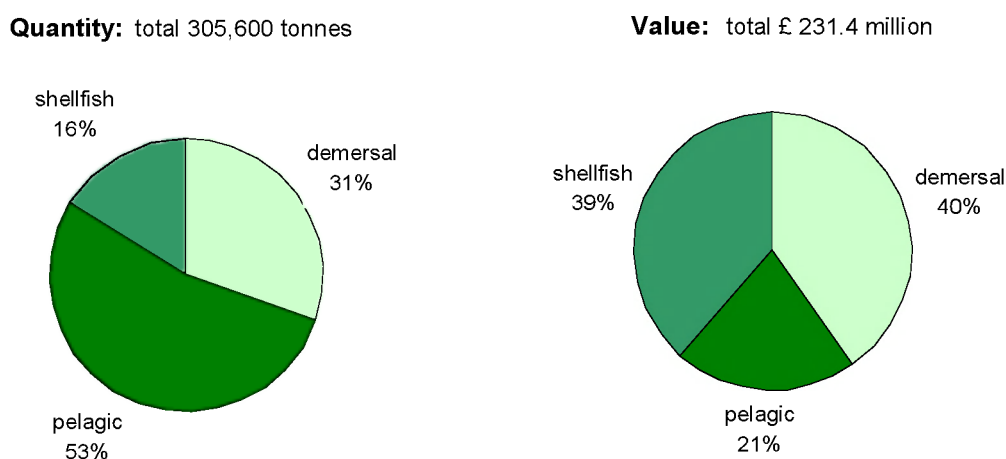


## 2.2 Landings by UK vessels into Scotland by area and district

In 2003, UK vessels landed 306 thousand tonnes of all species, at a value of £231 million, into Scottish ports. These landings represent a reduction of 3 per cent in quantity and 11 per cent in value from 2002 (Table 17).

Pelagic landings formed just over half of the total quantity landed although the relatively low prices achieved by pelagic species (Chart 8) resulted in the sector contributing only a fifth of the total value landed (Chart I). Conversely, demersal species which fetch higher prices, made up under a third of total quantity landed but formed just under 40 per cent of total value landed. High value shellfish landings formed only 16 per cent of the total by quantity but 39 per cent by value.

Chart I: Landings by UK vessels into Scotland, 2003



*Eastern Area: Eyemouth, Pittenweem, Aberdeen, Peterhead, Fraserburgh, Buckie*  
(comparisons calculated from Table 21)

- In 2003, landings by UK vessels fell at four of the six eastern districts, by between 3 per cent (Peterhead) and 25 per cent (Eyemouth), while the value of these landings dropped at three districts by between 5 per cent (Eyemouth) and 16 per cent (Aberdeen). These decreases were mainly due to reduced landings of demersal species experienced at all districts.
- Only Fraserburgh and Buckie experienced increases in total amount landed in 2003.
- At Fraserburgh, an extra 8.4 thousand tonnes of pelagic species was largely responsible for the 22 per cent increase in total tonnage landed,
- At Buckie, a 40 per cent increase in shellfish landings boosted the total value of landings there (all species) by 22 per cent.

*Northern Area : Wick, Orkney, Shetland, Stornoway, Kinlochbervie, Lochinver*

- Among the northern districts, only Shetland experienced a small increase in the total quantity landed by UK vessels, due entirely to an extra 4.9 thousand tonnes of pelagic species in 2003. The value of these landings was insufficient to prevent the total value of landings of all species into Shetland falling by 16 per cent since 2002.
- Total amounts landed at the other northern districts dropped by between 2 percent (Stornoway) and 32 per cent (Lochinver), largely as a result of a slump in demersal landings.
- Increased quantities and value of shellfish landed into Kinlochbervie and Lochinver however, helped reduce overall losses at these districts

*Western Area: Ullapool, Mallaig, Portree, Oban, Campbeltown, Ayr*

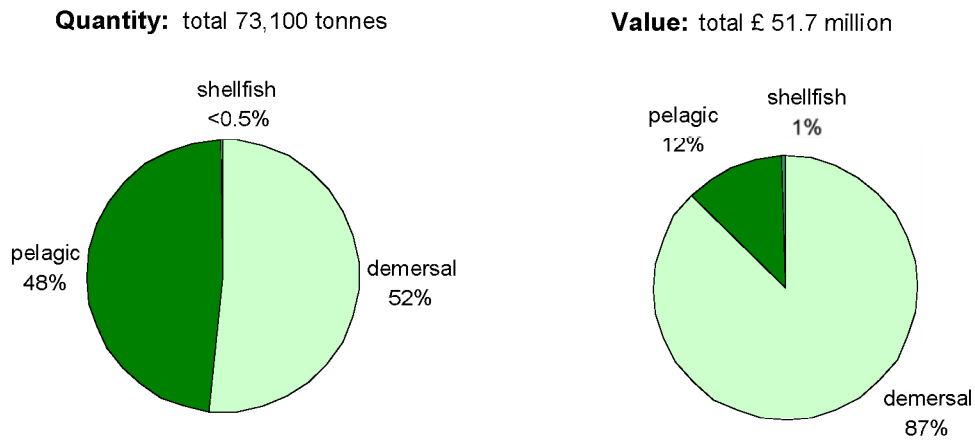
- Portree was the only western district to show a slight increase in the quantity and value of landings in 2003 (up by 3 per cent and 1 per cent, respectively). This was due to an 79 per cent increase in demersal landings since 2002, although the quantity involved was relatively small (667 tonnes).
- The total quantities landed at the other five western districts fell by 2 per cent (Campbeltown) to 25 per cent (Oban), while the total value of landings fell by 1 per cent (Portree) to 19 per cent (Oban).
- The decline of the demersal sector was the main reason behind these reductions except at Ullapool which experienced an 86 per cent drop in pelagic landings, and at Ayr where a 21 per cent fall in shellfish landings was the biggest change.

### **2.3 Landings by foreign vessels into Scotland**

Foreign vessels landed 73.1 thousand tonnes, worth £51.7 million, into Scottish ports in 2003. The proportion of fish landed into Scotland by foreign vessels increased from 10 per cent in 1999 to 19 percent in 2003 by volume (Table 17). This increase is largely due to a dramatic increase in the volumes of low value pelagic species landed into Scotland. The volumes of demersal species landed by foreign vessels has also increased over the same period but were lower in 2003 than the previous year.

The species composition of foreign landings differed notably from that by UK vessels (Charts II and I, respectively) with demersal species forming most of the tonnage landed (52 per cent) and negligible quantities of shellfish (0.3 per cent).

Chart II: Foreign landings into Scotland by species type, 2003



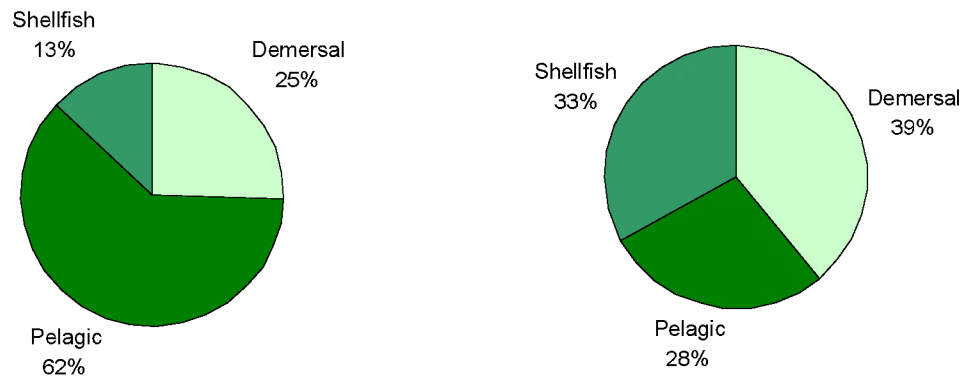
## 2.4 Landings by Scottish based vessels

Scottish based vessels made just under 72 thousand voyages in 2003, a similar number to 2002 (Table 18). These voyages were however, less productive on average than in 2002: the total quantity of fish landed fell by 12 percent to 391 thousand tonnes while the total value of these landings fell by 15 per cent to £279 million. The species composition of these landings (Chart III) was broadly similar to that of UK vessels landing into Scotland (Chart I), although Scottish based vessels landed proportionally more pelagic species and less demersal species and shellfish (Chart III), due primarily to 78 thousand tonnes of pelagic landings abroad (Table 17). Despite having declined sharply in total value since 1998, demersal species remained the most valuable species type landed by Scottish based vessels in 2003, forming 39 per cent of the total £280 million landed (Chart III). Shellfish formed the next most valuable segment of the catch at 33 per cent, while the value of pelagic landings slipped to 28 per cent of the total, due to a fall of 20 thousand tonnes landed (Table 17) compounded by a slight reduction in average prices for pelagic species.

Chart III: Total landings by Scottish based vessels by species type, 2003

**Quantity:** 391,400 tonnes

**Value:** £279.5 million



Looking at the longer term trends, total landings by Scottish vessels have fallen by 205 thousand tonnes or 34 per cent since 1999 (calculated from Table 17) affecting the demersal sector most (down by 93 thousand tonnes or 48 per cent). Pelagic landings by Scottish based vessels into UK ports have increased since 1999 by 34 thousand tonnes to 163 thousand tonnes, but this has been insufficient to offset a fall of 147 thousand (pelagic) tonnes landed abroad, resulting in an overall reduction of 113 thousand tonnes, or 32 per cent. Annual quantities of shellfish landed have remained relatively stable over this period .

The proportion of the annual catch of the Scottish based fleet that was landed into Scotland increased from 68 per cent in 2002 to 75 per cent in 2003 and in value terms increased from 75 per cent to 79 per cent.

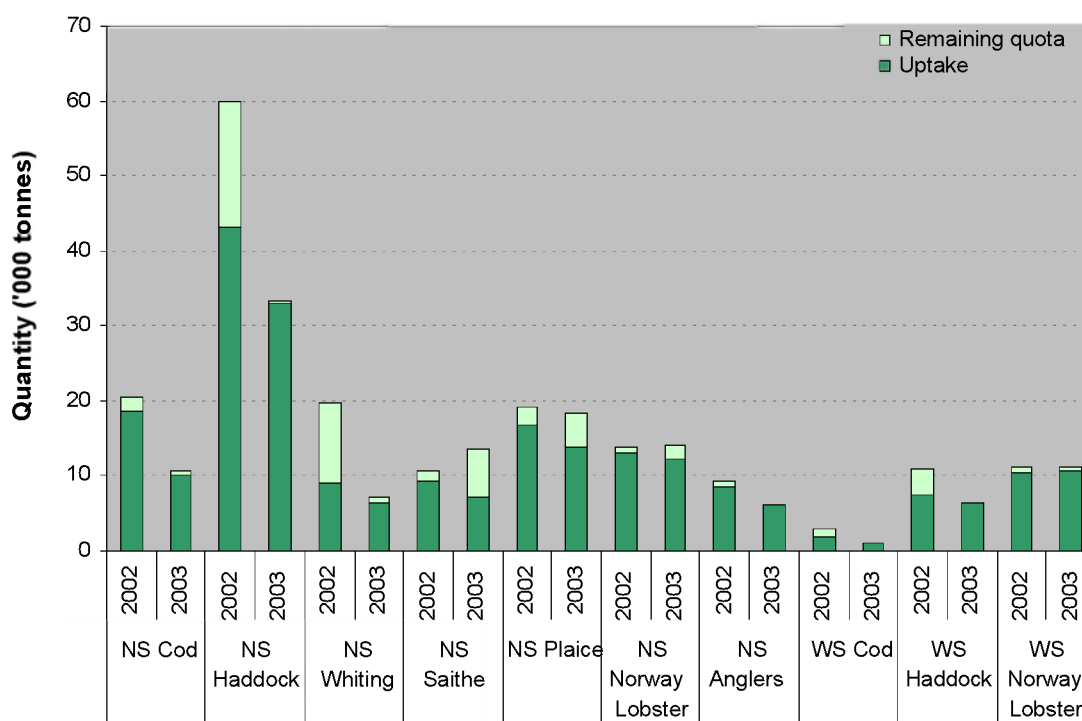
## 2.5 Uptake of UK quota

### 2.5.1 Demersal stocks

Quota uptake reached over 90 per cent for six of the ten most valuable demersal stocks (NS Cod, NS Haddock, NS Monkfish, WS Cod, WS Haddock and WS Norway Lobster) and in most cases exceeded percentage uptake in 2002 (Chart IV). With the 2003 quotas set below the quantity landed in 2002 for six of these stocks, the substantially increased uptakes of North Sea Haddock (from 72 per cent to almost 100 per cent), North Sea Whiting (from 46 per cent to 88 per cent), West of Scotland Haddock (from 67 per cent to 99 per cent) and West of Scotland Cod (from 60 per cent to 95 per cent) can be completely explained by reduced quotas rather than increased catching rates.

There were significant reductions in the uptake of two quota stocks: North Sea Plaice (76 per cent - down from 88 per cent in 2002) and especially North Sea Saithe (53 per cent - down from 87 per cent in 2002). The low uptake of North Sea Saithe might reflect the low profitability of fishing for this species, which fetches poor prices at market and is caught mainly in more northerly grounds where fishing is more expensive in terms of fuel and time spent at sea. The reduced uptake of North Sea Plaice will have been at least partly due to reduced fishing effort in 2003 by the beam trawler fleet.

*Chart IV: Quota uptake of main North Sea (NS) and West of Scotland (WS) demersal stocks by UK vessels in 2002 and 2003*



### 2.5.2 Pelagic stocks

Quota uptake for the four most important pelagic stocks continued to be high in 2003, exceeding 90 per cent for North Sea Herring, West of Scotland Herring, West of Scotland Mackerel and West of Scotland Horse Mackerel (Chart V). As with some of the demersal stocks noted above, quota change provides a better explanation of the pelagic uptake changes, than catching rate. Thus, landings of WS Herring and WS Horse Mackerel were all slightly down on 2002, yet percentage uptake was similar or higher due to reduced quotas. There was however, a slightly reduced percentage uptake of WS Mackerel despite a small quota reduction in 2003.

Chart V: Quota uptake of main North Sea (NS) and West of Scotland (WS) pelagic stocks by UK vessels in 2002 and 2003

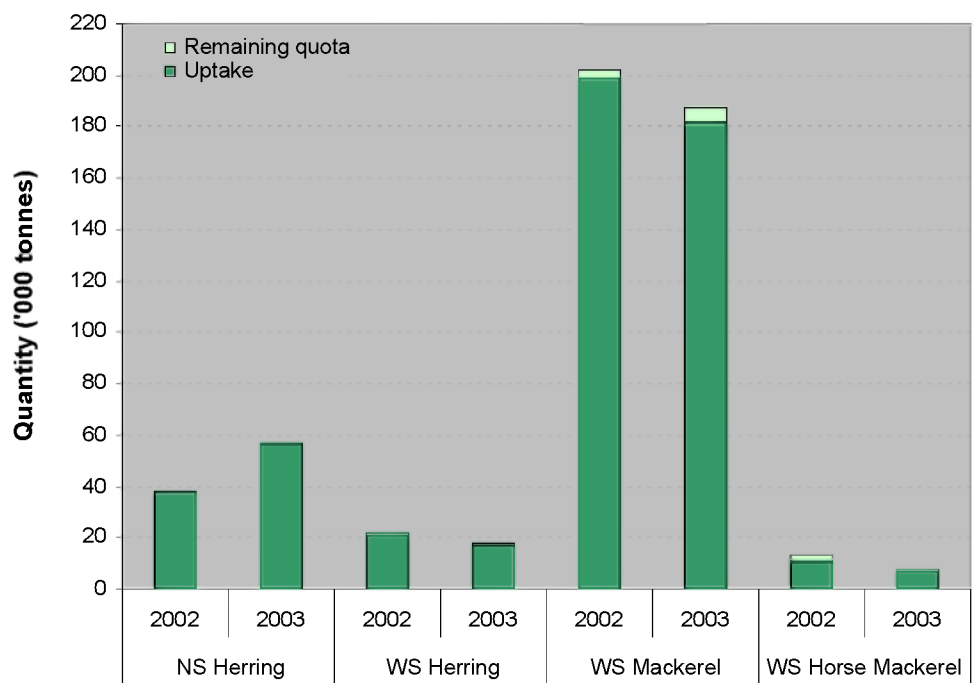




Table 15. Total Allowable Catches, UK quotas, and liveweight landed by UK vessels, 1999 to 2003

Area	Species	Sea area	Year	EU total	UK quota		UK uptake		Area	Species	Sea area	Year	EU total	UK quota		UK uptake		
				allowable catch	After exchanges	% of TAC	Tonnes	% of quota					allowable catch	After exchanges	% of TAC	Tonnes	% of quota	
North sea	Cod	IIa (EU),IV	1999	119,890	55,660	46.4	33,364	59.9	North sea	Herring	IVc,VIIId	1999	25,000	1,692	6.8	1,765	104.3	
			2000	73,610	34,149	46.4	27,555	80.7				2000	25,000	1,656	6.6	1,612	97.3	
			2001	40,720	20,555	50.5	19,712	95.9				2001	25,000	1,693	6.8	2,334	137.9	
	2002	41,620	20,377	49.0	18,522	90.9	2002	42,673		4,094	9.6	3,877	94.7					
	2003	22,659	10,696	47.2	10,062	94.1	2003	59,542		4,595	7.7	3,961	86.2					
	Haddock	IIa (EU),IV	1999	69,680	57,088	81.9	56,025	98.1		Mackerel	IIa (EU),III(EU),IV	1999	22,055	1,390	6.3	1,458	104.9	
			2000	60,620	53,056	87.5	39,655	74.7				2000	24,725	2,140	8.7	1,896	88.6	
			2001	47,895	41,184	86.0	32,576	79.1				2001	25,295	1,660	6.6	1,139	68.6	
			2002	77,935	59,805	76.7	43,234	72.3				2002	25,798	1,478	5.7	1,436	97.2	
			2003	39,521	33,257	84.2	33,099	99.5				2003	22,063	1,611	7.3	866	53.8	
	Whiting	IIa (EU),IV	1999	38,100	24,415	64.1	19,477	79.8		Horse mackerel	IIa(EU),IV(EU)	1999	58,000	5,840	10.1	2,523	43.2	
			2000	25,690	19,470	75.8	18,943	97.3				2000	49,400	4,960	10.0	3,480	70.2	
			2001	21,775	14,363	66.0	11,887	82.8				2001	49,400	5,554	11.2	3,479	62.6	
			2002	32,358	19,608	60.6	9,060	46.2				2002	49,400	5,230	10.6	1,446	27.6	
	2003	12,294	7,257	59.0	6,417	88.4	2003	41,667		5,124	12.3	1,192	23.3					
	Saithe	IIa,III(EU),IV	1999	52,800	8,900	16.9	8,461	95.1		Blue whiting	IIa(EU),IV(EU)	1999	50,000	1,070	2.1	16	1.5	
			2000	41,680	6,820	16.4	6,851	100.5				2000	50,000	963	1.9	-	-	
			2001	42,640	6,497	15.2	6,587	101.4				2001	50,000	1,071	2.1	-	-	
			2002	66,150	10,718	16.2	9,267	86.5				2002	27,650	698	2.5	-	-	
	2003	79,200	13,463	17.0	7,078	52.6	2003	27,650		592	2.1	65	11.0					
	Plaice	IIa (EU),IV	1999	98,625	27,970	28.4	17,072	61.0		Sandeel	IIa(EU),IV(EU)	1999	970,000	20,000	2.1	7,318	36.6	
			2000	94,210	26,520	28.1	18,922	71.3				2000	970,000	20,000	2.1	6,425	32.1	
			2001	76,540	18,705	24.4	19,149	102.4				2001	970,000	20,000	2.1	-	-	
			2002	73,110	19,063	26.1	16,708	87.6				2002	863,000	17,474	2.0	2,442	14.0	
			2003	69,282	18,313	26.4	13,890	75.8				2003	863,000	17,055	2.0	115	0.7	
	Sole	II,IV	1999	22,000	1,171	5.3	1,148	98.0		Sandeel	IV (Norway)	1999	150,000	7,500	5.0	-	-	
			2000	22,000	936	4.3	947	101.2				2000	150,000	7,500	5.0	-	-	
			2001	19,000	1,274	6.7	909	71.4				2001	150,000	7,500	5.0	-	-	
			2002	16,000	800	5.0	693	86.6				2002	150,000	-	-	-	-	
			2003	15,850	827	5.2	759	91.8				2003	131,000	-	-	-	-	
	Hake	IIa(EU),IV(EU)	1999	1,970	350	17.8	339	96.9		Pout & blue whiting	IV (ex EC) (Norway)	1999	50,000	2,500	5.0	511	20.4	
			2000	1,586	351	22.1	296	84.3				2000	50,000	2,500	5.0	511	20.4	
			2001	870	211	24.3	196	93.0				2001	50,000	2,500	5.0	-	-	
			2002	946	224	23.7	157	70.1				2002	50,000	2,500	5.0	-	-	
			2003	1,053	175	16.6	131	74.9				2003	50,000	2,500	5.0	-	-	
	Norway lobster	IIa(EU),IV(EU)	1999	15,200	14,865	97.8	13,132	88.3		Sprat	IIa(EU),IV(EU)	1999	156,000	7,810	5.0	2,994	38.3	
			2000	17,200	14,862	86.4	12,005	80.8				2000	220,000	8,350	3.8	2,027	24.3	
			2001	15,480	12,961	83.7	12,318	95.0				2001	220,000	8,350	3.8	-	-	
			2002	16,623	13,885	83.5	12,909	93.0				2002	220,000	8,348	3.8	1,633	19.6	
			2003	16,623	14,005	84.3	12,374	88.4				2003	240,000	9,111	3.8	1,310	14.4	
	Norway other	IV(Norway)	1999	11,000	3,875	35.2	2,366	61.1		West of Scotland	Cod	Vb(EU),VI XII(intl), XIVb(intl)	1999	11,800	5,960	50.5	3,514	59.0
			2000	11,000	3,875	35.2	2,722	70.2					2000	7,480	3,530	47.2	2,647	75.0
2001			11,000	3,875	35.2	2,401	62.0	2001	3,700				2,322	62.8	1,869	80.5		
2002			11,000	3,875	35.2	1,928	49.8	2002	4,600				2,974	64.7	1,789	60.2		
2003	11,000	3,775	34.3	1,881	49.8	2003	1,808	1,084	60.0		1,025	94.6						
Anglers	IIa(EU),IV(EU)	1999	22,070	17,960	81.4	10,717	59.7	Haddock	Vb(EU),VI XII(intl), XIVb(intl)		1999	19,000	14,705	77.4	13,262	90.2		
		2000	17,660	14,370	81.4	9,942	69.2				2000	19,000	15,002	79.0	8,647	57.6		
		2001	14,130	11,495	81.4	10,499	91.3				2001	13,900	10,720	77.1	7,343	68.5		
		2002	10,500	9,205	87.7	8,534	92.7				2002	14,100	10,996	78.0	7,377	67.1		
2003	6,245	6,245	89.2	6,060	97.0	2003	8,675	6,455	74.4		6,378	98.8						
Megrin	IIa(EU),IV(EU)	1999	3,000	2,860	95.3	2,119	74.1	Whiting	Vb(EU),VI XII(intl), XIVb(intl)		1999	6,300	4,060	64.4	3,308	81.5		
		2000	3,000	2,870	95.7	2,040	71.1				2000	4,300	2,875	66.9	2,421	84.2		
		2001	2,700	2,589	95.9	1,850	71.5				2001	4,000	2,580	64.5	1,737	67.3		
		2002	2,700	2,584	95.7	1,676	64.9				2002	3,500	2,157	61.6	1,144	53.0		
		2003	2,700	2,589	95.9	1,232	47.6				2003	2,000	1,285	64.3	805	62.6		
Lemon sole & witches	IIa(EU),IV(EU)	1999	12,000	7,330	61.1	4,259	58.1	Saithe	Vb(EU),VI XII(intl), XIVb(intl)		1999	7,500	3,125	41.7	2,962	94.8		
		2000	12,000	7,330	61.1	3,895	53.1				2000	7,000	2,970	42.4	2,630	88.6		
		2001	10,800	6,580	60.9	3,478	52.9				2001	9,000	2,955	32.8	2,649	89.6		
		2002	9,720	5,937	61.1	2,317	39.0				2002	14,000	3,211	22.9	1,918	59.7		
		2003	8,262	5,039	61.0	2,045	40.6				2003	17,119	3,029	17.7	1,475	48.7		
Skate & rays	IIa(EU),IV(EU)	1999	6,060	3,920	64.7	1,580	40.3	Plaice	Vb(EU),VI XII(intl), XIVb(intl)		1999	2,400	1,450	60.4	686	47.3		
		2000	6,060	3,920	64.7	1,371	35.0				2000	2,400	1,450	60.4	469	32.3		
		2001	4,848	3,128	64.5	1,299	41.5				2001	1,920	1,170	60.9	508	43.4		
		2002	4,848	3,136	64.7	1,357	43.3				2002	1,728	1,050	60.8	342	32.6		
2003	4,121	2,655	64.4	1,270	47.8	2003	1,534	920	60.0		255	27.7						
Dabs & flounder	IIa(EU),IV(EU)	1999	30,070	2,690	8.9	1,994	74.1	Sole	Vb(EU),VI XII(intl), XIVb(intl)		1999	155	30	19.4	17	56.7		
		2000	30,070	2,590	8.6	1,576	60.8				2000	155	30	19.4	12	40.0		
		2001	27,060	2,330	8.6	1,391	59.7				2001	140	30	21.4	9	31.0		
		2002	27,060	2,331	8.6	1,256	53.9				2002	125	25	20.0	6	24.0		
		2003	23,001	2,144	9.3	1,301	60.7				2003	106	21	19.8	7	33.3		
Turbot & brill	IIa(EU),IV(EU)	1999	9,000	1,390	15.4	594	42.7	Anglers	Vb(EU),VI XII(intl), XIVb(intl)		1999	8,600	2,695	31.3	2,197	81.5		
		2000	9,000	1,390	15.4	658	47.3				2000	8,000	2,505	31.3	2,195	87.6		
		2001	7,200	1,110	15.4	768	69.2				2001	6,400	2,033	31.8	1,737	85.4		
		2002	6,750	1,042	15.4	631	60.6				2002	4,770	1,572	33.0	1,550	98.6		
2003	5,738	886	15.4	514	58.0	2003	3,180	1,086	34.2		1,074	98.9						
Spurdog	IIa(EU),IV(EU)	1999	8,870	7,177	80.9	1,653	23.0	Norway lobster	Vb(EU),VI		1999	12,600	12,305	97.7	11,299	91.8		
		2000	8,870	7,177	80.9	1,291	18.0				2000	12,600	12,305	97.7	10,800	87.8		
		2001	8,870	7,177	80.9	1,006	14.0				2001	11,340	11,070	97.6	10,699	96.6		
		2002	7,100	5,745	80.9	1,013	17.6				2002	11,340	11,102	97.9	10,363	93.3		
2003	5,640	4,413	78.2	1,177	26.7	2003	11,340	11,065	97.6		10,551	95.4						
Northern prawns	IIa(EU),IV(EU)	1999	7,016	1,948	27.8	480	24.6	Megrin	Vb(EU),VI XII(intl), XIVb(intl)		1999	4,840	1,520	31.4	1,208	79.5		
		2000	7,016	1,948	27.8	378	19.4				2000	4,840	1,530	31.6	1,145	74.8		
		2001	6,404	1,778	27.8	465	26.2			2001	4,360	1,370	31.4	1,058	77.2			

Table 15. continued

Area	Species	Sea area	Year	EU total		UK quota		UK uptake		
				allowable catch	After exchanges	% of TAC	Tonnes	% of quota		
West of Scotland	Herring	Vb(EU), Via(N),Vlb	1999	64,940	39,240	60.4	37,395	95.3		
			2000	41,340	24,990	60.4	37,395	149.6		
			2001	35,700	21,570	60.4	21,795	101.0		
			2002	35,700	21,571	60.4	20,926	97.0		
			2003	29,340	17,728	60.4	17,116	96.5		
	Mackerel	II(excl EU,Ice) Vb(EU),VI,VII, VIII(excl c), XII(intl), XIVb(intl)	1999	282,090	164,580	58.3	165,193	100.4		
			2000	329,410	192,770	58.5	191,852	99.5		
			2001	337,639	197,099	58.4	197,813	100.4		
			2002	345,012	202,139	58.6	199,237	98.6		
			2003	310,808	187,596	60.4	182,161	97.1		
	Herring	Via(Clyde)	1999	1,000	1,000	100.0	16	1.6		
			2000	1,000	1,000	100.0	1	0.1		
			2001	1,000	1,000	100.0	437	43.7		
			2002	1,000	1,000	100.0	46	4.6		
			2003	1,000	1,000	100.0	328	32.8		
	Horse mackerel	Vb(EU),VI,VII, VIII(excl c), XII(intl), XIVb(intl)	1999	258,000	23,560	9.1	18,503	78.5		
			2000	233,000	19,314	8.3	13,618	70.5		
			2001	233,000	23,233	10.0	16,103	69.3		
			2002	143,000	13,040	9.1	10,887	83.5		
			2003	130,000	7,555	5.8	7,095	93.9		
	Blue whiting (inc Biscay)	Vb(EU),VI,VII, VIII(excl c), XII(intl), XIVb(intl)	1999	150,000	35,000	23.3	92,694	264.8		
			2000	150,000	42,921	28.6	42,921	100.0		
			2001	194,360	52,103	26.8	51,889	99.6		
			2002	121,845	31,548	25.9	28,874	91.5		
2003			121,935	29,018	23.8	19,265	66.4			
Hake	Vb(EU),VI,VII, XII(intl), XIVb(intl)	1999	30,910	5,533	17.9	5,146	93.0			
		2000	23,600	4,353	18.4	4,115	94.5			
		2001	13,920	2,653	19.1	2,469	93.1			
		2002	15,118	2,685	17.8	2,386	88.9			
		2003	16,823	3,011	17.9	2,401	79.7			
Area VII	Cod	VIIa	1999	5,500	2,320	42.2	1,750	75.4		
			2000	2,100	950	45.2	839	88.3		
			2001	2,100	925	44.0	902	97.5		
			2002	3,200	1,377	43.0	1,166	84.7		
			2003	1,950	612	31.4	532	86.9		
	Cod	VII(excl a),VIII IX,X	1999	19,000	1,836	9.7	1,318	71.8		
			2000	16,000	1,740	10.9	1,100	63.2		
			2001	10,500	1,237	11.8	1,110	89.7		
			2002	8,700	802	9.2	760	94.8		
			2003	6,700	547	8.2	482	88.1		
	Haddock	VII,VIII, IX,X	1999	20,000	4,590	23.0	1,828	39.8		
			2000	13,200	3,049	23.1	1,407	46.1		
			2001	15,250	2,383	15.6	2,856	119.8		
			2002	9,300	1,436	15.4	910	63.4		
			2003	8,185	789	9.6	672	85.2		
	Whiting	VIIa	1999	4,400	1,922	43.7	1,274	66.3		
			2000	2,640	1,220	46.2	685	56.1		
			2001	1,390	685	49.3	509	74.3		
			2002	1,000	443	44.3	312	70.4		
			2003	500	192	38.4	162	84.4		
	Whiting	VII(excl a)	1999	25,000	2,117	8.5	1,491	70.4		
			2000	22,500	1,527	6.8	1,388	90.9		
			2001	21,000	1,110	5.3	1,046	94.2		
			2002	31,700	3,402	10.7	971	28.5		
			2003	31,700	3,302	10.4	879	26.6		
	Saithe	VII,VIII, IX,X	1999	8,800	1,350	15.3	719	53.3		
			2000	6,500	970	14.9	458	47.2		
			2001	5,600	805	14.4	301	37.4		
			2002	8,710	1,340	15.4	296	22.1		
			2003	8,710	1,337	15.4	364	27.2		
	Plaice	VIIa	1999	2,400	887	37.0	711	80.2		
			2000	2,400	1,035	43.1	632	61.1		
			2001	2,238	924	41.3	605	65.5		
			2002	2,400	1,223	51.0	577	47.2		
			2003	1,675	478	28.5	419	87.7		
	Plaice	VIIde	1999	7,400	2,150	29.1	1,664	77.4		
			2000	6,500	1,797	27.6	1,643	91.4		
			2001	6,000	1,665	27.8	1,419	85.2		
			2002	6,690	1,856	27.7	1,807	97.4		
			2003	5,970	1,790	30.0	1,733	96.8		
	Plaice	VIIfg	1999	900	195	21.7	169	86.7		
			2000	900	175	19.4	134	76.6		
			2001	755	180	23.8	135	75.0		
			2002	680	119	17.5	105	88.2		
			2003	660	155	23.5	127	81.9		
	Plaice	VIIhjk	1999	1,350	170	12.6	82	48.2		
			2000	1,350	170	12.6	76	44.7		
			2001	1,215	150	12.3	72	48.0		
2002			970	146	15.1	60	41.1			
2003			582	170	29.2	57	33.5			
Sole	VIIa	1999	900	191	21.2	173	90.6			
		2000	900	206	22.9	141	68.4			
		2001	1,190	264	22.2	197	74.6			
		2002	1,100	242	22.0	168	69.4			
		2003	1,010	238	23.6	220	92.4			
Sole	VII d	1999	4,700	905	19.3	768	84.9			
		2000	4,100	711	17.3	617	86.8			
		2001	4,790	964	20.1	785	81.4			
		2002	5,200	1,096	21.1	976	89.1			
		2003	5,400	1,147	21.2	1,113	97.0			
Sole	VIIe	1999	700	410	58.6	375	91.5			
		2000	700	385	55.0	383	99.5			
		2001	600	355	59.2	378	106.5			
		2002	525	288	54.9	290	100.7			
		2003	394	235	59.6	235	100.0			
Area VII	Sole	VIIfg	1999	960	261	27.2	231	88.5		
			2000	960	291	30.3	243	83.5		
			2001	1,112	318	28.6	286	89.9		
			2002	1,070	319	29.8	318	99.7		
			2003	1,240	350	28.2	342	97.7		
			Sole	VIIhjk	1999	720	120	16.7	97	80.8
					2000	720	151	21.0	96	63.6
					2001	650	110	16.9	109	99.1
					2002	650	141	21.7	125	88.7
					2003	390	80	20.5	78	97.8
					Norway lobster	VII	1999	23,000	7,640	33.2
			2000	21,000			6,965	33.2	5,568	79.9
	2001	18,900	6,220	32.9			5,311	85.4		
	2002	17,790	5,526	31.1			5,111	92.5		
	2003	17,790	5,796	32.6			4,782	82.5		
	Anglers	VII	1999	26,670			4,252	15.9	3,483	81.9
			2000	23,000	3,990	17.3	3,109	77.9		
			2001	23,810	4,284	18.0	3,092	72.2		
			2002	18,600	3,876	20.8	3,540	91.3		
			2003	15,810	3,651	23.1	3,485	95.5		
			Megrin	VII	1999	22,400	2,889	12.9	2,263	78.3
	2000	17,920			2,634	14.7	2,260	85.8		
	2001	16,466			2,407	14.6	1,609	66.8		
	2002	13,350			2,124	15.9	1,830	86.2		
2003	14,336	2,265			15.8	1,818	80.3			
Pollack (Lythe)	VII	1999			17,000	2,960	17.4	1,626	54.9	
		2000	17,000	2,960	17.4	1,711	57.8			
		2001	17,000	2,960	17.4	1,788	60.4			
		2002	17,000	2,934	17.3	1,961	66.8			
		2003	17,000	2,961	17.4	1,750	59.1			
		Herring	VIIa(excl part)	1999	6,600	4,880	73.9	4,388	89.9	
2000	6,600			3,960	60.0	2,003	50.6			
2001	6,900			5,100	73.9	4,141	81.2			
2002	4,800			3,525	73.4	2,473	70.2			
2003	4,800			3,550	74.0	2,736	77.1			
Herring	VIIe,f			1999	1,000	500	50.0	176	35.2	
		2000	1,000	500	50.0	239	47.8			
		2001	1,025	500	48.8	139	27.8			
		2002	1,000	500	50.0	167	33.4			
		2003	1,000	500	50.0	335	67.0			
		Herring	VIIg,h,j,k,part a	1999	21,000	30	0.1	12	40.0	
2000	21,000			30	0.1	1	3.3			
2001	20,129			-	-	-	-			
2002	8,000			10	0.1	9	90.0			
2003	13,000			16	0.1	14	87.5			
Sprat	VIIde			1999	12,000	6,300	52.5	3,557	56.5	
		2000	12,000	6,300	52.5	1,692	26.9			
		2001	12,000	6,300	52.5	1,334	21.2			
		2002	12,000	6,300	52.5	1,196	19.0			
		2003	9,600	5,040	52.5	1,368	27.1			
		Norway	Cod	I, II (Norway)	1999	19,870	9,845	49.5	8,916	90.6
2000	16,150				7,607	47.1	7,619	100.2		
2001	16,350				7,708	47.1	7,080	91.9		
2002	16,355				7,699	47.1	7,629	99.1		
2003	16,353		7,688	47.0	7,470	97.2				
Haddock	I, II (Norway)		1999	1,700	895	52.6	607	67.8		
			2000	1,360	603	44.3	417	69.2		
			2001	1,850	1,060	57.3	781	73.7		
			2002	1,850	1,041	56.3	629	60.4		
			2003	2,200	1,198	54.5	667	55.7		
Saithe	I, II (Norway)		1999	3,100	136	4.4	136	100.0		
			2000	3,000	302	10.1	306	101.3		
		2001	3,234	328	10.1	334	101.8			
		2002	3,240	294	9.1	257	87.4			
		2003	3,600	252	7.0	230	91.3			
Redfish	I, II (Norway)	1999	3,500	400	11.4	232	58.0			
		2000	3,300	360	10.9	80	22.2			
		2001	3,000	300	10.0	70	23.3			
		2002	3,000	300	10.0	110	3			

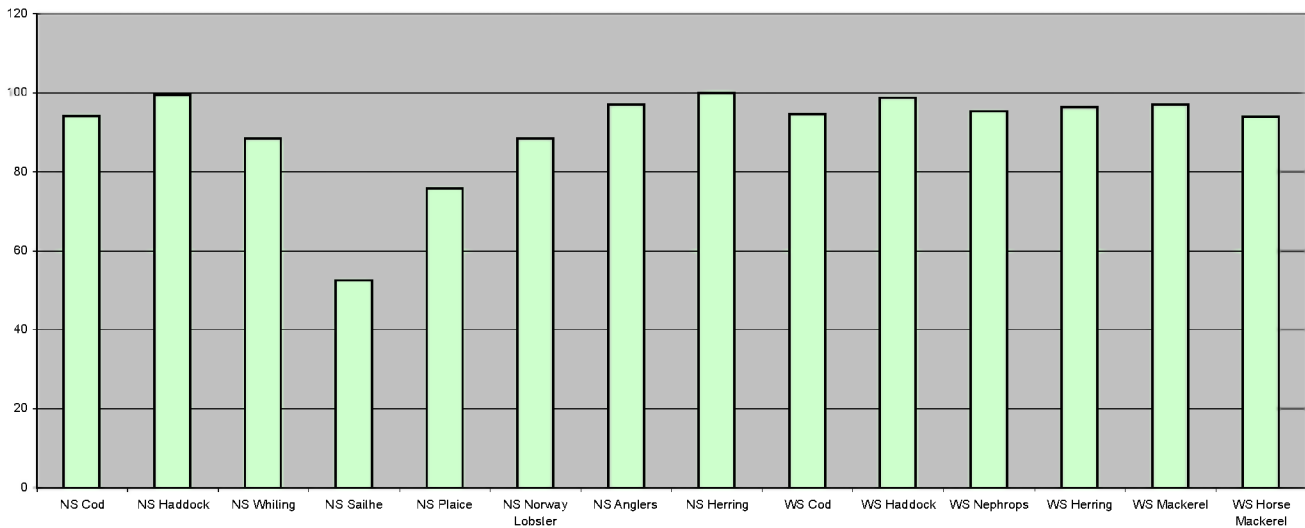
Table 15. continued

Area	Species	Sea area	Year	EU total		UK quota		UK uptake	
				allowable catch	After exchanges	% of TAC	Tonnes	% of quota	
Faroes	Cod/haddock	Vb (Faroes)	1999	500	450	90.0	422	93.8	
			2000	500	445	89.0	440	98.9	
			2001	500	455	91.0	446	98.0	
			2002	500	430	86.0	420	97.7	
			2003	500	464	92.8	411	88.6	
	Saithe	Vb (Faroes)	1999	2,500	580	23.2	453	78.1	
			2000	2,500	628	25.1	518	82.5	
			2001	2,500	680	27.2	649	95.4	
			2002	2,500	630	25.2	549	87.1	
			2003	2,500	767	30.7	676	88.1	
	Redfish	Vb (Faroes)	1999	7,000	75	1.1	31	41.3	
			2000	7,000	375	5.4	144	38.4	
			2001	7,000	275	3.9	151	54.9	
			2002	7,000	120	1.7	86	71.7	
			2003	6,300	157	2.5	41	26.1	
	Ling/blue ling	Vb (Faroes)	1999	3,600	205	5.7	136	66.3	
			2000	3,600	190	5.3	69	36.3	
			2001	3,600	180	5.0	119	66.1	
			2002	3,600	250	6.9	219	87.6	
	Flatfish	Vb (Faroes)	2003	3,240	244	7.5	192	78.7	
			1999	1,000	680	68.0	45	6.6	
2000			1,000	680	68.0	195	28.7		
2001			1,000	680	68.0	113	16.6		
Other species	Vb (Faroes)	2002	1,000	680	68.0	187	27.5		
		2003	1,000	680	68.0	201	29.6		
		1999	760	220	28.9	133	60.5		
		2000	760	180	23.7	171	95.0		
Blue whiting	Vb (Faroes)	2001	760	180	23.7	133	73.9		
		2002	760	180	23.7	132	73.3		
		2003	760	180	23.7	140	77.8		
		1999	25,000	11,000	44.0	6,346	57.7		
		2000	25,000	11,000	44.0	2,127	19.3		
Greenland Cod	V, XIV, NAFO1 (Greenland)	2001	25,000	4,944	19.8	0	0.0		
		2002	0	0	0.0	0	0.0		
		2003	16,000	40	0.3	30	75.0		
		1999	31,000	5,612	18.1	95	1.7		
		2000	31,000	5,640	18.2	1	0.0		
Greenland Redfish	NAFO1 (Greenland)	2001	2,000	364	18.2	129	35.4		
		2002	2,000	364	18.2	5	1.4		
		2003	2,000	364	18.2	315	86.5		
		1999	5,500	105	1.9	-	-		
Greenland Redfish	V, XIV (Greenland)	2000	5,500	105	1.9	-	-		
		2001	5,500	0	0.0	-	-		
		2002	5,500	105	1.9	-	-		
		2003	5,500	105	1.9	-	-		
Greenland Redfish	V, XIV (Greenland)	1999	46,820	520	1.1	68	13.1		
		2000	48,320	220	0.5	45	20.5		
		2001	25,000	175	0.7	179	102.3		
		2002	26,500	175	0.7	36	20.6		
Greenland halibut	V, XIV (Greenland)	2003	25,500	600	2.4	271	45.2		
		1999	4,250	233	5.5	226	97.0		
		2000	5,430	268	4.9	268	100.0		
		2001	4,250	212	5.0	100	47.2		
Roundnose Grenadier	V, XIV, NAFO1 (Greenland)	2002	5,455	354	6.5	201	56.8		
		2003	4,800	714	14.9	634	88.8		
		1999	4,650	0	0.0	na	na		
		2000	4,935	250	5.1	0	0.0		
Iceland Redfish	Va (Iceland)	2001	1,715	86	5.0	2	2.3		
		2002	2,000	86	4.3	1	1.2		
		2003	2,000	86	4.3	1	1.2		
		1999	3,000	1,160	38.7	na	na		
NEAFC Redfish	Redfish	2000	3,000	1,160	38.7	819	70.6		
		2001	3,000	1,460	48.7	608	41.6		
		2002	3,000	1310	43.7	372	28.4		
		2003	3,000	1410	47.0	1400	99.3		
NEAFC Redfish	Redfish	1999	27,000	44	0.2	0	0.0		
		2000	20,780	35	0.2	0	0.0		
		2001	13,734	23	0.2	2	8.7		
		2002	13,883	171	1.2	4	2.3		
2003	16,452	2	0.0	1	50.0				

Source : EU Commission

UK figures are as reported to the EC Commission in 2003. This data, however, is still provisional and does not take into account flexibility arrangements, or small adjustments required to UK landings abroad by other member states.

Chart 6. UK percentage uptake of main quota stocks, 2003



NS: North Sea WS: West of Scotland

Table 16. Fixed quota units (thousands), by sea area and country, 1st January 2004

	North Sea (1)			West of Scotland (2)			Area VII		
	Scottish vessels	Other UK vessels	Held in PO (3) pools	Scottish vessels	Other UK vessels	Held in PO (3) pools	Scottish vessels	Other UK vessels	Held in PO (3) pools
Demersal	1293	384	674	233	81	118	25	181	57
Pelagic	406	177	45	2581	809	96	3	74	1
Shellfish	68	22	41	57	15	41	4	41	14
Total	1766	583	760	2870	905	255	32	297	72

(1) includes southern North Sea herring (2) includes western hake (3) Producer Organisations

Table 17. Live weight and value of landings by species type, 1999 to 2003

		Tonnes (thousand)					Value (£ million)				
		1999	2000	2001	2002	2003	1999	2000	2001	2002	2003
Landings by UK vessels into: Scotland	Demersal	175.9	152.7	121.8	122.0	93.3	173.4	159.9	132.6	119.3	92.9
	Pelagic	123.9	103.2	116.4	143.4	163.3	14.4	15.6	31.6	48.2	48.9
	Shellfish	49.9	51.8	51.5	50.8	49.0	94.3	86.0	92.5	92.1	89.6
	Total	349.7	307.7	289.7	316.3	305.6	282.1	261.5	256.7	259.6	231.4
	Rest of UK	Demersal	68.4	56.9	53.7	48.0	40.2	105.2	87.7	84.9	78.5
Landings by foreign vessels into: Scotland	Pelagic	21.7	24.8	30.2	21.4	18.4	4.9	5.5	7.3	4.8	4.9
	Shellfish	66.8	75.2	84.7	80.7	80.3	72.0	67.3	74.8	72.6	80.9
	Total	156.9	156.9	168.6	150.2	139.0	182.1	160.5	167.0	155.9	160.2
	Demersal	25.5	29.6	28.9	39.4	37.8	35.0	43.0	40.5	49.8	45.1
	Pelagic	14.2	22.8	30.5	22.1	35.1	2.0	2.3	4.4	5.6	6.3
Landings by foreign vessels into: Rest of UK	Shellfish	0.1	0.1	0.1	0	0.2	0.2	0.4	0.2	0.1	0.3
	Total	39.9	52.4	59.5	61.6	73.1	37.3	45.7	45.0	55.5	51.7
	Demersal	10.6	7.3	8.1	7.8	30.4	19.8	13.6	17.5	17.0	34.4
	Pelagic	2.7	1.3	3.3	1.4	0.6	0.5	0.3	1.0	0.6	0.2
	Shellfish	0.4	0.6	0.7	1.5	2.0	0.6	0.9	0.9	2.3	2.9
Landings by UK vessels into UK	Total	13.8	9.2	12.1	10.7	32.9	20.9	14.8	19.3	19.8	37.5
	Demersal	244.3	209.6	175.5	170.0	133.5	278.6	247.6	217.5	197.8	167.3
	Pelagic	145.6	128.0	146.6	164.8	181.7	19.3	21.1	38.9	53.0	53.8
	Shellfish	116.7	127.0	136.2	131.5	129.3	166.3	153.3	167.3	164.7	170.5
	Total	506.6	464.6	458.3	466.5	444.6	464.2	422.0	423.7	415.5	391.6
All landings into UK	Demersal	280.4	246.5	212.6	217.2	201.7	333.4	304.2	275.4	264.6	246.8
	Pelagic	162.5	152.1	180.5	188.3	217.4	21.8	23.7	44.2	59.2	60.3
	Shellfish	117.2	127.7	136.9	133.0	131.5	167.1	154.6	168.4	167.1	173.7
	Total	560.3	526.2	530.0	538.8	550.6	522.4	482.5	488.0	490.8	480.8
	Demersal	72.0	72.9	69.4	71.8	69.9	62.2	64.6	61.0	60.3	55.5
Landings by UK vessels into Scotland as per cent of landings by UK vessels into UK	Pelagic	85.1	80.6	79.4	87.0	89.9	74.6	73.9	81.3	90.9	90.8
	Shellfish	42.8	40.8	37.8	38.6	37.9	56.7	56.1	55.3	55.9	52.6
	Total	69.0	66.2	63.2	67.8	68.7	60.8	62.0	60.6	62.5	59.1
	Demersal	71.8	74.0	70.9	74.3	65.0	62.5	66.7	62.8	63.9	55.9
	Pelagic	85.0	82.8	81.4	87.9	91.3	75.2	75.5	81.3	90.9	91.5
Landings into Scotland as per cent of landings into UK	Shellfish	42.7	40.6	37.7	38.2	37.4	56.6	55.9	55.0	55.2	51.8
	Total	69.5	68.4	65.9	70.1	68.8	61.7	63.7	61.8	64.2	58.9
	Demersal	173.7	147.9	117.3	117.4	89.2	172.1	155.0	127.2	114.9	91.2
	Pelagic	129.0	114.2	131.2	150.3	163.3	16.0	18.0	35.3	49.9	49.2
	Shellfish	49.6	51.9	53.3	51.7	50.5	93.4	86.8	94.1	92.5	91.6
Scottish based vessels - landings into UK	Total	352.3	314.0	301.9	319.4	303.1	281.5	259.8	256.7	257.4	232.0
	Demersal	19.2	18.1	12.9	15.3	10.4	24.2	19.0	23.8	21.7	18.0
	Pelagic	224.8	189.0	173.2	110.8	77.6	38.1	50.0	61.2	47.9	28.6
	Shellfish	0.3	0.2	0.2	0.4	0.4	1.1	0.9	0.9	1.3	0.9
	Total	244.3	207.3	186.3	126.5	88.4	63.4	69.9	85.9	70.9	47.5
Other UK based vessels - landings into UK	Demersal	70.6	61.7	58.2	52.6	44.3	106.5	92.6	90.3	82.9	76.1
	Pelagic	16.6	13.8	15.4	14.5	18.4	3.3	3.1	3.6	3.1	4.6
	Shellfish	67.1	75.1	82.9	79.8	78.8	72.9	66.5	73.2	72.2	78.9
	Total	154.3	150.6	156.4	147.1	141.5	182.6	162.2	167.0	158.1	159.6
	Demersal	28.7	28.2	30.0	30.7	28.3	36.1	33.3	36.8	35.4	34.4
Other UK based vessels - landings into Rest of UK	Pelagic	49.9	39.8	55.7	56.1	62.2	11.3	9.6	17.0	15.5	32.5
	Shellfish	6.8	8.2	7.4	5.7	7.9	12.9	15.4	10.9	8.0	14.6
	Total	85.4	76.2	93.1	92.5	98.4	60.3	58.3	64.8	58.9	81.5
	Demersal	292.2	255.9	218.4	216.0	172.2	338.9	299.9	278.1	254.9	219.6
	Pelagic	420.3	356.8	375.5	331.7	321.5	68.7	80.7	117.1	116.4	115.0
Landings by UK vessels	Shellfish	123.8	135.4	143.8	137.6	137.6	180.3	169.6	179.1	174.0	185.9
	Total	836.3	748.1	737.7	685.5	631.4	587.9	550.2	574.4	545.3	520.5
	Demersal	66.0	64.9	59.6	61.4	57.8	57.9	58.0	54.3	53.6	49.7
	Pelagic	84.2	85.0	81.1	78.7	74.9	78.7	84.2	82.4	84.0	67.7
	Shellfish	40.3	38.5	37.2	37.9	37.0	52.4	51.7	53.0	53.9	49.8
Percent landed by Scottish based vessels	Total	71.3	69.7	66.2	65.0	62.0	58.7	59.9	59.6	60.2	53.7

Table 18. Voyages and landings by Scottish based vessels by landing district, 2002 & 2003

Voyages ending in district:	2002			2003		
	Number	Tonnes	Value (£000)	Number	Tonnes	Value (£000)
Eyemouth	5,411	3,733	4,568	4,708	2,730	4,216
Pittenweem	5,341	1,019	1,897	4,110	915	1,904
Aberdeen	2,212	17,327	15,726	2,028	13,649	13,092
Peterhead	3,016	92,168	59,214	2,472	89,290	50,713
Fraserburgh	4,957	35,665	30,024	5,361	43,891	31,031
Buckie	2,394	2,908	3,790	2,761	2,949	4,433
Wick	2,452	17,391	20,008	2,191	13,347	15,434
Orkney	1,900	2,762	3,881	1,537	2,187	3,080
Shetland	3,326	79,813	35,815	2,687	80,780	29,975
Stornoway	6,706	4,302	9,053	6,775	4,178	8,633
Kinlochbervie	972	7,393	9,244	922	6,932	8,896
Lochinver	1,843	5,436	7,382	1,842	3,836	6,332
Ullapool	3,012	7,280	10,117	2,843	5,767	8,479
Mallaig	3,438	7,969	8,300	4,004	7,474	7,722
Oban	4,271	4,582	7,730	4,787	3,427	6,330
Campbeltown	8,368	3,606	6,633	8,535	3,602	6,548
Ayr	5,362	7,974	6,470	5,488	6,466	6,359
Portree	4,580	2,596	7,021	5,924	2,687	7,082
Other UK	1,627	15,441	10,496	1,767	8,947	11,711
Denmark	74	35,057	9,260	34	16,973	3,938
Netherlands	551	9,367	12,493	516	7,447	12,029
Norway	156	68,926	37,140	111	49,002	23,444
Spain	144	3,105	7,684	143	2,683	6,122
Other foreign ports	54	9,998	4,325	41	12,249	1,970
Total	72,167	445,819	328,272	71,587	391,406	279,471

Chart 7. Average prices of landings into Scotland by UK vessels, by species type, 1986 to 2003

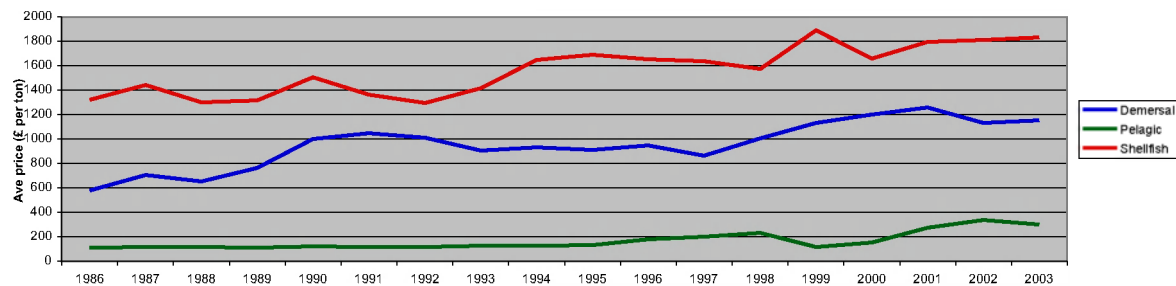


Table 19. Liveweight and value of landings into the UK by UK vessels, by main species (over £5m value in 2003) and country of landing, 1999 to 2003

		Tonnes (thousand)					Value (£ million)				
		1999	2000	2001	2002	2003	1999	2000	2001	2002	2003
UK vessels into: Scotland	Cod	26.1	23.3	17.4	17.0	9.0	35.3	32.9	23.6	23.8	14.0
	Haddock	66.4	46.3	36.5	46.8	37.9	54.4	46.9	31.2	30.6	25.3
	Monks	12.1	11.9	11.8	10.1	7.2	28.4	27.5	26.5	21.4	14.8
	Herring	42.3	34.5	36.0	38.2	51.9	4.6	3.4	8.6	6.2	6.4
	Mackerel	33.3	43.5	54.9	89.5	98.5	7.0	10.4	21.1	40.3	41.5
	Crabs	9.6	12.3	11.1	10.1	9.1	11.0	13.9	12.9	11.9	10.8
	Nephrops	21.8	20.6	20.3	21.4	20.6	57.5	48.0	53.1	56.4	52.0
	Scallops	8.5	8.8	9.8	9.1	10.1	14.3	13.9	17.2	14.7	15.7
	Other	102.1	80.5	73.7	59.3	61.4	51.2	45.9	47.9	42.5	51.0
	Total	349.7	307.7	271.6	301.5	305.6	282.1	261.5	241.9	247.8	231.4
England and Wales	Cod	19.0	12.8	9.9	7.6	6.1	24.8	16.3	12.6	9.4	8.0
	Monks	3.1	2.7	3.1	2.8	2.7	6.6	5.8	7.0	6.0	5.7
	Sole	2.0	1.8	2.1	2.1	2.2	13.6	11.1	13.1	12.6	13.9
	Cockles	14.0	20.2	18.9	14.2	26.8	2.4	2.9	3.8	4.1	16.9
	Crabs	13.1	12.7	13.5	12.7	14.0	15.7	13.6	14.7	13.7	14.2
	Lobsters	1.3	0.8	0.8	0.8	1.0	9.2	7.7	7.8	8.1	9.3
	Nephrops	3.0	2.7	3.3	2.4	2.7	6.3	4.8	6.8	4.8	5.3
	Scallops	10.2	10.4	9.1	9.2	8.6	14.2	16.1	11.9	12.6	12.7
	Other	71.3	70.4	84.8	77.6	56.6	67.9	65.1	70.3	66.1	58.4
	Total	137.2	134.8	145.5	129.4	120.7	160.7	143.2	147.8	137.4	144.5
Northern Ireland	Nephrops	6.2	5.0	4.8	4.6	4.4	10.5	7.9	8.5	7.5	6.7
	Other	13.5	17.1	18.3	15.3	13.8	11.0	9.3	10.4	10.1	9.0
Total	19.7	22.1	23.1	19.9	18.2	21.5	17.2	18.9	17.6	15.7	
UK	Cod	46.7	37.0	28.1	25.7	15.5	62.6	50.6	37.4	35.0	22.7
	Dogfish	6.8	7.4	7.1	5.8	6.6	5.2	5.9	6.4	5.4	6.3
	Haddock	71.4	50.2	42.3	51.9	40.7	59.3	51.2	36.3	34.6	27.5
	Lemon sole	4.5	4.0	3.6	2.3	2.2	10.4	10.0	9.9	7.3	6.7
	Monks	15.5	14.8	15.1	13.1	3.6	35.5	33.6	33.8	27.9	8.2
	Megrim	5.0	5.0	4.3	4.0	10.1	9.4	8.9	7.0	8.0	20.8
	Plaice	9.6	8.5	7.7	5.9	4.4	12.6	9.8	9.0	6.6	5.4
	Skates and rays	5.6	5.5	5.5	5.3	5.7	5.4	5.7	5.7	5.3	5.7
	Sole	2.0	1.8	2.1	2.1	2.3	13.8	11.2	13.2	12.8	14.1
	Whiting	25.4	23.2	15.1	11.4	8.2	13.9	14.4	9.9	6.6	5.1
	Herring	45.3	39.5	43.8	42.5	55.3	5.1	4.1	10.5	6.9	7.0
	Mackerel	41.3	54.6	63.9	96.6	106.5	9.6	13.8	23.9	42.7	44.6
	Cockles	14.2	20.3	19.0	14.3	26.8	2.5	3.0	3.8	4.2	16.9
	Crabs	23.0	25.6	25.0	23.3	23.8	27.0	28.0	27.8	26.0	25.5
	Lobsters	1.8	1.2	1.1	1.2	1.3	14.9	12.5	11.4	11.7	12.8
	Nephrops	31.0	28.3	28.4	28.4	27.6	74.3	60.7	68.4	68.8	64.0
	Scallops	19.2	19.6	19.5	18.8	19.2	29.2	30.7	29.9	28.0	29.1
	Squid	2.1	1.4	1.4	2.1	3.0	4.2	2.7	3.9	4.9	6.8
	Others	136.2	116.8	125.3	111.7	82.0	69.3	65.2	75.5	72.9	62.3
	Total	506.6	464.6	458.3	466.4	444.6	464.2	422.0	423.7	415.6	391.6

Table 20. Liveweight and value of landings into Scotland by UK vessels, by main species (value over £0.1m in 2003) 1999 to 2003

	Tonnes					Value (£ 000)					£ per tonne (standard weight)				
	1999	2000	2001	2002	2003	1999	2000	2001	2002	2003	1999	2000	2001	2002	2003
Blue ling	3,705	2,375	4,243	2,880	577	2,945	2,039	4,099	2,874	671	914	987	1,111	1,147	1,337
Catfish	628	740	587	424	461	914	1,023	827	676	659	1,718	1,631	1,661	1,879	1,687
Cod	26,098	23,305	17,383	17,025	8,955	35,334	32,945	23,558	23,814	13,969	1,584	1,654	1,586	1,637	1,825
Dogfish	3,183	3,768	3,492	3,357	3,905	2,373	3,059	3,184	3,144	3,947	1,021	1,112	1,249	1,283	1,385
Forkbeard	173	270	433	407	519	125	198	324	288	387	815	826	845	800	843
Greenland halibut	1,104	895	917	1,002	1,327	1,841	1,500	1,621	1,754	2,144	1,801	1,811	1,909	1,891	1,745
Grenadiers	1,038	598	1,020	758	169	676	325	800	543	163	651	544	784	717	966
Gurnards	31	108	194	309	305	13	29	83	143	212	421	272	427	463	695
Haddock	66,359	46,347	36,458	46,842	37,862	54,433	46,946	31,167	30,642	25,266	952	1,175	992	759	774
Hake	1,362	1,252	976	677	525	1,744	1,954	2,320	1,744	1,150	1,485	1,811	2,757	2,987	2,540
Halibut	226	172	134	181	256	666	562	509	659	929	3,186	3,519	4,120	3,931	3,925
Lemon sole	2,576	2,184	1,791	895	819	4,944	4,650	4,072	2,162	1,807	1,996	2,214	2,365	2,512	2,294
Ling	7,190	6,480	5,903	6,026	3,825	7,150	6,624	6,512	6,560	4,074	1,144	1,175	1,269	1,252	1,225
Megrim	3,241	3,183	2,875	2,531	2,174	5,148	4,587	4,231	4,195	4,418	1,668	1,513	1,545	1,740	2,134
Monks	12,139	11,864	11,847	10,086	7,248	28,435	27,461	26,460	21,432	14,761	2,970	2,928	2,811	2,686	2,546
Mullet	2	1	15	39	49	5	3	39	133	188	2,733	3,274	2,875	3,808	4,325
Plaice	2,813	2,138	2,089	1,468	1,283	2,961	1,531	1,506	1,000	1,081	1,126	766	771	729	902
Pollack (Lythe)	660	874	795	648	805	716	982	914	718	834	1,236	1,281	1,310	1,262	1,181
Redfish	1,306	1,096	1,233	1,124	1,793	1,125	914	1,068	1,128	1,812	862	834	866	1,003	1,011
Roes	120	110	74	75	82	148	156	123	134	129	1,239	1,423	1,650	1,795	1,570
Saithe (Coalfish)	8,211	8,629	8,330	8,493	7,600	3,835	3,433	3,614	3,540	3,105	556	473	516	496	486
Scabbardfish	200	399	669	971	95	269	389	771	1,055	159	1,347	975	1,152	1,086	1,682
Shark	258	78	196	74	258	259	109	160	72	321	1,376	1,915	1,121	1,341	1,703
Skates & Rays	2,430	2,466	2,247	2,080	2,184	1,812	2,030	1,826	1,587	1,815	843	930	918	862	939
Turbot	150	154	117	96	82	595	458	571	502	472	4,240	3,186	5,207	5,573	6,130
Tusk	770	962	807	639	361	555	637	585	474	250	815	748	819	838	783
Whiting	20,334	19,490	12,266	8,849	6,516	11,335	12,073	8,266	5,215	4,228	630	700	761	666	733
Witches	1,822	2,145	2,440	2,036	2,239	1,826	2,071	2,423	2,294	3,128	1,042	1,004	1,033	1,172	1,453
Other flatfish	163	157	170	138	107	220	210	231	187	196	1,351	1,333	1,354	1,351	1,835
Other demersal	7,628	10,445	2,084	1,886	926	977	1,045	726	639	582	129	101	359	348	668
Total demersal	175,919	152,685	121,788	122,019	93,306	173,379	159,943	132,590	119,307	92,856	1,133	1,201	1,258	1,132	1,152
Blue whiting	38,432	17,685	20,023	8,047	9,728	1,476	737	936	532	670	38	42	47	66	69
Herring	42,290	34,452	35,957	38,231	51,909	4,589	3,425	8,614	6,219	6,401	109	99	240	163	123
Mackerel	33,332	43,542	54,947	89,515	98,496	6,998	10,443	21,084	40,256	41,474	210	240	384	450	421
Sprats	8,611	4,238	1,297	2,657	2,593	1,043	495	152	277	284	121	117	117	104	109
Other pelagic	1,221	3,299	4,215	4,960	618	304	528	815	932	91	249	160	193	188	148
Total pelagic	123,886	103,217	116,438	143,411	163,344	14,410	15,628	31,600	48,217	48,920	116	151	271	336	299
Edible crabs	7,458	9,615	8,558	7,693	7,240	7,636	9,701	9,052	8,481	7,995	1,024	1,009	1,058	1,102	1,104
Lobsters	527	408	301	328	301	5,532	4,544	3,497	3,426	3,352	10,495	11,130	11,637	10,449	11,150
Mussels	229	864	853	735	839	46	178	186	193	242	201	206	218	262	289
Nephrops	21,817	20,599	20,282	21,359	20,589	57,507	48,040	53,055	56,448	52,047	2,636				



Table 21. Liveweight and value of landings into Scottish ports by UK vessels, by landing district and species type, 1999 to 2003

		1999		2000		2001		2002		2003	
		Tonnes	Value (£000)	Tonnes	Value (£000)	Tonnes	Value (£000)	Tonnes	Value (£000)	Tonnes	Value (£000)
Eyemouth	Demersal	3,525	3,689	2,218	2,403	1,682	1,604	2,825	2,487	1,882	1,917
	Pelagic	0	0	1	1	0	0	-	-	0	0
	Shellfish	1,714	4,060	1,505	3,186	1,054	2,288	998	2,209	1,002	2,535
	Total	5,240	7,749	3,725	5,590	2,737	3,893	3,823	4,696	2,884	4,452
Pittenweem	Demersal	512	540	66	72	133	116	80	62	24	19
	Pelagic	0	0	-	-	-	-	-	-	0	+
	Shellfish	1,392	2,540	1,328	2,157	1,003	1,769	942	1,836	892	1,887
	Total	1,903	3,080	1,394	2,229	1,137	1,884	1,021	1,898	916	1,905
Aberdeen	Demersal	22,767	22,610	17,103	18,981	13,001	13,103	15,373	13,333	12,463	10,670
	Pelagic	14,715	615	8781	370	8,378	387	982	58	4	1
	Shellfish	1,887	4,088	1,117	2,343	1,153	2,559	1,206	2,701	1,557	2,863
	Total	39,369	27,312	27,002	21,694	22,532	16,049	17,561	16,093	14,023	13,535
Peterhead	Demersal	66,673	64,785	55,305	60,494	39,697	43,823	37,511	36,881	26,406	26,031
	Pelagic	28,427	4,235	30,677	4,595	35,450	9,887	53,389	17,397	61,559	20,020
	Shellfish	3,396	9,766	1,953	5,474	1,354	4,284	2,022	5,540	1,996	5,138
	Total	98,496	78,787	87,935	70,563	76,501	57,994	92,922	59,818	89,961	51,189
Fraserburgh	Demersal	13,867	12,355	11,812	11,918	10,579	10,586	12,896	9,960	11,794	9,379
	Pelagic	14,500	2,235	17,078	2,876	23,151	6,965	16,432	5,401	24,881	6,738
	Shellfish	5,863	15,364	6,002	12,161	6,665	13,977	6,657	14,882	7,320	15,059
	Total	34,231	29,954	34,892	26,955	40,395	31,529	35,985	30,244	43,994	31,176
Buckie	Demersal	1,282	1,518	1,304	1,525	1,015	1,071	1,742	1,730	1,483	1,595
	Pelagic	-	-	17	8	8	3	17	5	8	3
	Shellfish	1,084	1,813	1,620	2,572	1,541	2,620	1,191	2,122	1,663	3,094
	Total	2,365	3,332	2,940	4,105	2,563	3,695	2,950	3,856	3,154	4,692
Wick	Demersal	13,487	16,761	15,065	18,633	14,806	17,487	16,070	17,555	11,818	12,783
	Pelagic	322	119	238	71	190	60	94	28	6	1
	Shellfish	4,271	5,649	5,433	6,112	5,322	6,352	4,886	6,107	4,835	5,930
	Total	18,081	22,529	20,736	24,815	20,318	23,899	21,051	23,690	16,659	18,715
Orkney	Demersal	571	636	295	303	160	126	71	30	30	14
	Pelagic	20	8	2	0	0	0	1	0	1	+
	Shellfish	3,003	4,339	2,998	4,024	2,903	4,040	2,690	3,850	2,347	3,239
	Total	3,594	4,983	3,294	4,327	3,063	4,166	2,762	3,881	2,377	3,254
Shetland	Demersal	17,300	11,566	19,956	12,185	12,481	12,777	10,719	9,769	7,612	7,047
	Pelagic	53,678	5,736	40,178	6,818	46,355	13,789	69,116	24,860	73,986	21,828
	Shellfish	1,674	2,027	1,571	1,589	1,234	1,634	1,137	1,695	1,069	1,523
	Total	72,651	19,330	61,705	20,592	60,070	28,201	80,971	36,323	82,667	30,398
Stornoway	Demersal	942	647	581	398	624	437	593	412	530	337
	Pelagic	0	0	-	-	3	2	0	0	0	0
	Shellfish	4,160	8,399	3,455	7,500	3,741	9,079	3,714	8,650	3,670	8,331
	Total	5,103	9,045	4,036	7,898	4,368	9,518	4,307	9,062	4,199	8,668
Kinlochbervie	Demersal	10,954	12,726	9,152	11,412	8,106	9,563	6,852	8,146	6,357	7,679
	Pelagic	2	1	3	0	70	14	154	37	37	9
	Shellfish	438	577	472	636	480	795	616	1,319	685	1,379
	Total	11,394	13,304	9,627	12,049	8,655	10,372	7,622	9,502	7,079	9,066
Lochinver	Demersal	7,614	8,642	6,911	8,411	7,849	10,014	6,435	8,036	4,009	5,262
	Pelagic	14	4	-	-	89	26	71	18	6	3
	Shellfish	700	2,013	821	2,092	671	2,004	937	2,737	1,040	3,136
	Total	8,328	10,659	7,732	10,503	8,609	12,044	7,443	10,791	5,055	8,401
Ullapool	Demersal	5,016	5,681	5,196	5,286	5,962	6,192	6,479	6,909	5,122	6,239
	Pelagic	1,879	213	851	159	1,179	251	202	69	28	11
	Shellfish	1,710	3,125	1,737	3,091	1,883	3,836	1,810	4,199	1,706	3,861
	Total	8,606	9,018	7,784	8,536	9,025	10,279	8,491	11,176	6,856	10,111
Mallaig	Demersal	8,954	8,636	5,477	5,410	3,270	3,259	2,298	1,856	1,847	1,551
	Pelagic	5,264	696	3,827	513	1,409	194	2,662	275	2,543	280
	Shellfish	4,532	11,003	4,170	7,890	3,573	7,485	3,073	6,290	3,130	5,964
	Total	18,749	20,335	13,474	13,813	8,251	10,937	8,032	8,421	7,520	7,795
Portree	Demersal	-	-	323	371	449	503	373	387	667	697
	Pelagic	-	-	283	22	0	0	105	45	1	+
	Shellfish	-	-	1,443	4,020	2,392	7,253	2,121	6,596	2,020	6,387
	Total	-	-	2,048	4,413	2,841	7,756	2,599	7,028	2,687	7,084
Oban	Demersal	230	244	262	278	537	547	627	565	255	201
	Pelagic	3,634	405	1,054	162	0	0	-	-	0	0
	Shellfish	2,767	5,340	4,341	7,339	4,624	8,300	4,321	7,662	3,438	6,447
	Total	6,630	5,989	5,657	7,779	5,161	8,846	4,948	8,228	3,693	6,647
Campbeltown	Demersal	529	501	418	396	290	254	245	208	159	116
	Pelagic	1,341	130	201	29	153	21	185	23	273	25
	Shellfish	3,453	6,710	5,778	8,568	5,062	8,493	4,086	7,338	3,992	7,153
	Total	5,323	7,342	6,397	8,993	5,505	8,768	4,516	7,570	4,424	7,294
Ayr	Demersal	1,697	1,841	1,242	1,469	1,149	1,128	832	981	850	1,319
	Pelagic	89	13	27	4	2	1	1	0	12	1
	Shellfish	7,869	7,499	6,095	5,210	6,840	5,753	8,428	6,389	6,628	5,721
	Total	9,655	9,353	7,364	6,683	7,990	6,881	9,261	7,370	7,490	7,041
Total	Demersal	175,919	173,377	152,685	159,943	121,788	132,590	122,019	119,307	93,306	92,856
	Pelagic	123,886	14,410	103,217	15,628	116,438	31,600	143,411	48,217	163,344	48,920
	Shellfish	49,912	94,313	51,840	85,966	51,495	92,521	50,835	92,123	48,990	89,647
	Total	349,717	282,100	307,741	261,536	289,721	256,711	316,265	259,647	305,640	231,424

Table 22. Disposal of sea fish landed (1) into Scotland by UK vessels, 1999 to 2003

	Demersal					Pelagic					Shellfish				
	1999	2000	2001	2002	2003	1999	2000	2001	2002	2003	1999	2000	2001	2002	2003
Human consumption	168.2	142.2	119.0	117.8	90.7	86.2	86.5	101.2	137.5	154.6	49.9	51.8	51.5	50.8	49.0
Klondyked	-	-	-	-	-	-	0.6	-	0.1	-	-	-	-	-	-
Meal and oil	6.7	10.3	2.6	3.7	2.4	32.0	16.1	14.9	5.7	8.2	-	-	-	-	-
Dumped/ bait	0.1	0.2	0.1	0.4	0.1	1.7	0.1	0.1	-	0.4	-	-	-	-	-
Withdrawn	1.0	-	-	-	-	4.0	-	-	-	-	-	-	-	-	-
Other	-	-	0.1	0.1	-	-	-	0.2	0.2	0.2	-	-	-	-	-
Total	175.9	152.7	121.8	122.0	93.3	123.9	103.2	116.4	143.4	163.3	49.9	51.8	51.5	50.8	49.0





Table 23. continued

Kinlochbervie		Mallaig		Ayr		All ports		
Tonnes	£'000	Tonnes	£'000	Tonnes	£'000	Tonnes	£'000	
Blue Ling	111	180	Cod	93	96	Cod	577	671
Cod	252	394	Dogfish - Spur	224	194	Dogfish - Spotted	39	35
Dogfish - Portugese	310	371	Haddock	577	345	Dogfish - Spur	461	659
Dogfish - Spur	516	493	Hake	40	29	Haddock	8,955	13,969
Forkbeard	156	106	Ling	41	35	Ling	70	38
Greenland Halibut	287	530	Megrims	123	185	Megrims	27	16
Haddock	1,408	1,047	Monks	154	278	Pollack (Lythe)	21	8
Hake	38	71	Saithe (Coalfish)	29	10	Dogfish - L.nose velvet	767	734
Ling	277	332	Skates & Rays	167	99	Dogfish - Spotted	31	7
Megrims	517	1,102	Whiting	176	83	Dogfish - Spur	3,085	3,198
Monks	597	1,375	Witches	150	140	Forkbeard	519	387
Plaice	105	87	Other demersal	74	57	Greenland Halibut	1,327	2,144
Redfish	501	522	Total demersal	1,847	1,551	Gurnards - Red	279	198
Roundnose Grenadier	55	56	Sprats	2,543	280	Gurnards Other	26	14
Saithe (Coalfish)	359	144	Total pelagic	2,543	280	Haddock	37,862	25,266
Scabbardfish	22	44	Nephrops	1,983	4,259	Hake	525	1,150
Sharks	27	31	Scallops	1,125	1,668	Halibut	256	929
Skates & Rays	429	382	Other shellfish	23	37	John Dory	42	99
Tusk	56	37	Total shellfish	3,130	5,964	Lemon Sole	819	1,807
Whiting	168	99	Total landings	7,520	7,795	Ling	3,825	4,074
Witches	43	45				Megrims	2,174	4,418
Other demersal	122	230				Monks	7,248	14,761
Total demersal	6,357	7,679				Mullet - Red	49	188
Argentines	37	9				Other flatfish	107	196
Total pelagic	37	9				Plaice	1,283	1,081
Brown Crabs	299	338				Pollack (Lythe)	805	833
Nephrops	197	626				Rabbit fish	33	8
Scallops	47	128				Redfish	1,793	1,812
Squid	124	197				Roes	82	129
Other shellfish	19	91				Roundnose Grenadier	166	162
Total shellfish	685	1,379				Saithe (Coalfish)	7,600	3,105
Total landings	7,079	9,066				Sandeels	301	16
						Scabbardfish	95	159
						Sharks	258	321
						Skates & Rays	2,184	1,815
						Turbot	82	472
						Tusk	361	250
						Whiting	6,516	4,228
						Witches	2,239	3,128
						Other demersal	417	373
						Total demersal	93,306	92,856
						Argentines	109	39
						Blue Whiting	9,728	670
						Herring	51,909	6,401
						Horse Mackerel	508	51
						Mackerel	98,496	41,474
						Sprats	2,593	284
						Total pelagic	163,344	48,920
						Brown Crabs	7,257	8,029
						Cockles	75	66
						Green Crabs	218	108
						Lobsters	301	3,352
						Mussels	839	242
						Nephrops	20,589	52,047
						Periwinkles	57	62
						Queen Scallops	4,457	1,736
						Razor Fish	29	72
						Red Crabs	154	266
						Scallops	10,055	15,701
						Squid	2,214	4,826
						Surf Clams	270	189
						Velvet Crabs	1,517	2,379
						Wheiks	905	452
						Other shellfish	53	121
						Total shellfish	48,990	89,647
						Total landings	305,640	231,424

Oban		Portree			
Tonnes	£'000	Tonnes	£'000		
Dogfish - Spur	25	30	Cod	21	35
Haddock	120	77	Dogfish - Spur	67	61
Skates & Rays	26	21	Haddock	249	180
Whiting	40	26	Ling	56	58
Other demersal	46	47	Megrims	57	118
Total demersal	255	201	Monks	40	78
Brown Crabs	1,022	971	Saithe (Coalfish)	23	11
Lobsters	24	262	Skates & Rays	50	45
Nephrops	698	2,717	Whiting	21	16
Scallops	1,410	2,077	Other demersal	82	96
Velvet Crabs	223	366	Total demersal	667	697
Wheiks	57	36	Total pelagic	1	+
Other shellfish	4	18	Brown Crabs	254	378
Total shellfish	3,438	6,447	Nephrops	1,189	5,058
Total landings	3,693	6,647	Scallops	454	700

Campbeltown		
Tonnes	£'000	
Cod	19	17
Haddock	52	34
Hake	23	15
Other demersal	65	49
Total demersal	159	116
Herring	223	21
Sprats	50	4
Total pelagic	273	25
Brown Crabs	208	196
Green Crabs	26	12
Nephrops	2,155	4,640
Queen Scallops	200	99
Scallops	980	1,584
Velvet Crabs	194	322
Wheiks	203	101
Other shellfish	26	199
Total shellfish	3,992	7,153
Total	4,424	7,294

Ullapool		
Tonnes	£'000	
Blue Ling	193	208
Cod	174	327
Dogfish - L.nose velvet	21	8
Dogfish - Portugese	387	290
Dogfish - Spur	179	213
Forkbeard	217	165
Greenland Halibut	144	216
Haddock	1,187	1,157
Lemon Sole	20	68
Ling	222	306
Megrims	198	436
Monks	420	1,000
Plaice	22	22
Rabbitfish	25	6
Redfish	248	249
Roundnose Grenadier	51	53
Saithe (Coalfish)	461	233
Scabbardfish	37	57
Sharks	184	151
Skates & Rays	180	209
Tusk	49	33
Whiting	91	84
Witches	320	543
Other demersal	92	203
Total demersal	5,122	6,239
Argentines	24	10
Other pelagic	4	1
Total pelagic	28	11
Brown Crabs	652	801
Nephrops	635	2,422
Red Crabs	111	125
Scallops	262	390
Squid	44	99
Other shellfish	2	24
Total shellfish	1,706	3,861
Total landings	6,856	10,111

Chart 8. Liveweight landings into Scotland by UK vessels, by species type, 1963 to 2003

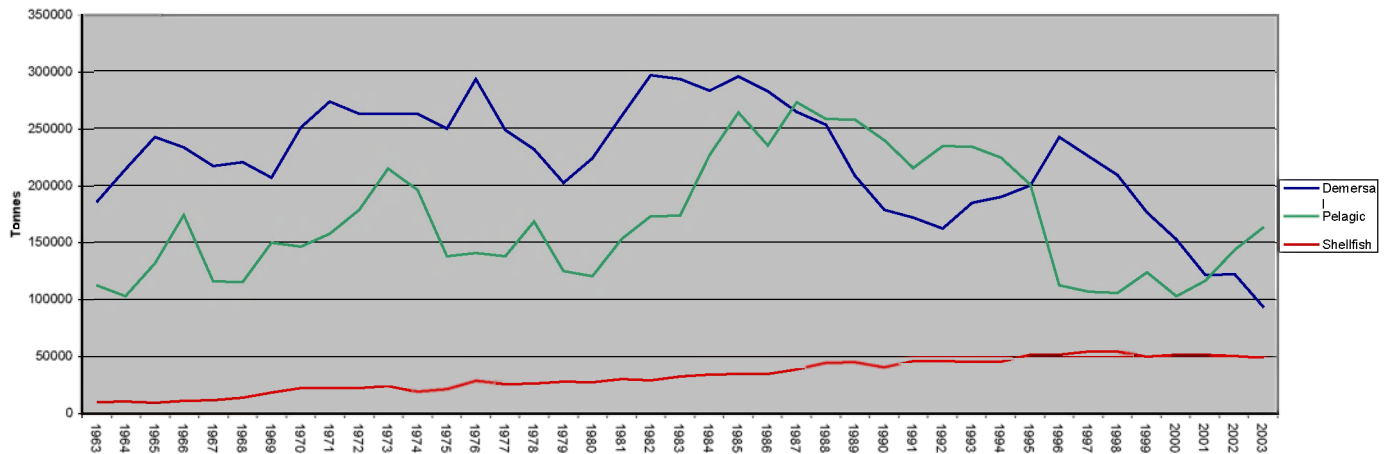


Chart 9. Average prices of landings into Scotland, by species type and month, 2003

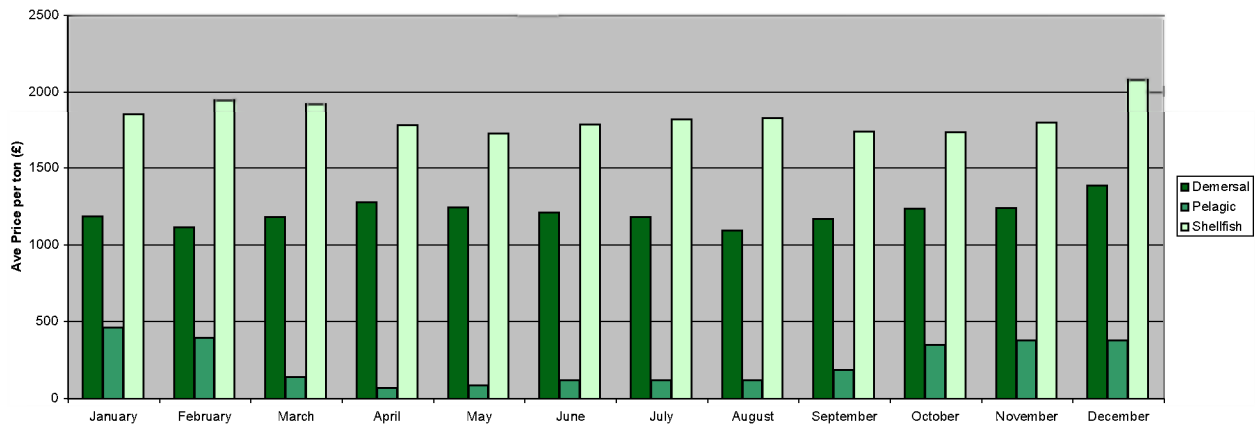


Table 24. Liveweight and value of landings into Scotland by foreign vessels, by main (1) species, 1999 to 2003

	Tonnes					Value (£'000)				
	1999	2000	2001	2002	2003	1999	2000	2001	2002	2003
Blue ling	3,458	3,892	3,250	3,333	4,735	4,632	5,281	4,431	4,590	5,879
Bluemouth	139	203	300	252	176	171	193	304	252	176
Catfish	-	-	-	-	124	-	-	-	-	109
Cod	1,613	1,375	2,175	4,768	5,329	2,111	1,911	2,851	5,811	6,593
Dogfish	1,184	2,236	2,845	2,410	1,955	1,018	1,861	2,515	2,027	1,626
Forkbeard	280	493	573	409	259	275	502	580	414	259
Greenland halibut	460	242	290	406	636	741	424	493	754	1,213
Haddock	1,721	1,279	1,567	5,300	4,620	2,082	1,615	2,083	5,350	3,982
Hake	1,238	2,353	1,118	914	503	5,408	9,699	5,223	4,315	2,392
Halibut	47	45	58	82	82	151	160	252	332	310
Lemon Sole	18	31	24	74	80	32	68	59	170	195
Ling	1,850	1,239	1,017	1,030	949	2,158	1,381	1,102	1,092	888
Megrim	169	146	167	151	147	381	347	413	375	364
Monks	957	626	642	727	929	2,344	1,465	1,274	1,737	1,996
Orange roughy	185	109	72	129	149	340	398	268	374	595
Rabbitfish	403	556	708	555	391	409	435	500	386	274
Redfish	689	405	549	705	631	905	583	780	838	793
Roundnose Grenadier	4,588	7,353	5,742	6,802	5,861	5,054	7,949	6,609	7,901	6,813
Saithe (Coalfish)	3,435	3,799	3,845	5,313	6,182	2,561	3,347	3,394	3,183	3,562
Scabbard fish	1,085	1,874	2,532	3,911	2,870	2,233	4,076	5,826	8,667	5,903
Sharks	-	-	-	-	164	-	-	-	-	152
Skates & Rays	99	79	89	91	124	97	79	91	108	149
Tusk	399	380	463	347	376	364	407	362	298	275
Whiting	-	-	-	-	144	-	-	-	-	108
Witches	252	139	401	231	102	413	217	615	356	157
Other demersal	1,275	695	494	1,670	250	1,166	635	459	520	287
<b>Total demersal</b>	<b>25,544</b>	<b>29,550</b>	<b>28,918</b>	<b>39,409</b>	<b>37,768</b>	<b>35,046</b>	<b>43,035</b>	<b>40,485</b>	<b>49,848</b>	<b>45,050</b>
Argentines	-	-	-	-	1,789	-	-	-	-	351
Blue whiting	9,107	16,422	16,933	10,493	22,820	410	685	815	723	1,624
Mackerel	3,551	5,342	9,877	11,376	9,923	902	1,417	2,991	4,813	4,277
Other pelagic	1,567	988	3,714	260	554	650	204	564	53	82
<b>Total pelagic</b>	<b>14,225</b>	<b>22,751</b>	<b>30,524</b>	<b>22,129</b>	<b>35,086</b>	<b>1,962</b>	<b>2,306</b>	<b>4,370</b>	<b>5,590</b>	<b>6,334</b>
Crabs - Red	-	-	-	-	121	-	-	-	-	187
Other shellfish	143	144	94	36	75	244	353	179	102	123
<b>Total shellfish</b>	<b>143</b>	<b>144</b>	<b>94</b>	<b>36</b>	<b>196</b>	<b>244</b>	<b>353</b>	<b>179</b>	<b>102</b>	<b>310</b>
<b>Total</b>	<b>39,913</b>	<b>52,445</b>	<b>59,536</b>	<b>61,574</b>	<b>73,051</b>	<b>37,251</b>	<b>45,694</b>	<b>45,034</b>	<b>55,540</b>	<b>51,697</b>

(1) landings of £0.1 million or more in 2002

Table 25. Liveweight and value of landings into Scotland by foreign vessels, by country of origin, 1999 to 2003

	Tonnes					Value (£'000)				
	1999	2000	2001	2002	2003	1999	2000	2001	2002	2003
Belgium	300	183	-	114	36	171	168	-	118	29
Denmark	207	1,383	15	42	1,853	249	527	40	88	177
Eire	4,413	6,190	10,642	11,425	10,023	1,200	1,731	3,213	4,867	4,299
Faroe	6,146	2,719	11,554	18,397	25,662	5,652	3,739	7,692	17,150	18,912
France	16,481	21,676	19,001	17,789	16,004	20,689	27,072	25,482	24,723	21,963
Germany	397	126	261	88	256	941	269	421	190	383
Iceland	165	1,443	-	233	4,137	118	265	-	340	447
Norway	7,696	11,717	14,573	10,242	11,736	376	505	873	810	948
Russia	780	2,781	-	-	617	42	109	-	-	43
Spain	3,322	4,061	3,491	3,106	2,277	7,810	11,302	7,312	7,174	4,462
Other	6	166	-	139	450	3	7	-	80	34
<b>Total</b>	<b>39,913</b>	<b>52,445</b>	<b>59,536</b>	<b>61,574</b>	<b>73,051</b>	<b>37,251</b>	<b>45,694</b>	<b>45,034</b>	<b>55,540</b>	<b>51,697</b>

\*\* - the Other for 2003 relates to Sweden only.

Table 26. Liveweight and value of landings into Scotland by foreign vessels, by landing district, 1999 to 2003

	Tonnes					Value (£'000)				
	1999	2000	2001	2002	2003	1999	2000	2001	2002	2003
North east ports (1)	271	2,537	10,261	11,028	10,671	188	851	2,770	5,500	5,043
Other east coast	-	-	-	-	-	-	-	-	-	-
North mainland ports (2)	5,410	3,503	5,412	13,745	15,689	6,551	4,639	6,346	13,071	13,707
Orkney/Shetland	11,878	18,808	20,344	13,907	26,101	870	1,218	1,717	1,687	2,785
North west/WI ports (3)	21,415	27,507	23,453	22,894	20,589	28,740	38,897	34,130	35,283	30,161
South west ports (4)	939	90	66	-	-	902	89	71	-	-
<b>Total</b>	<b>39,913</b>	<b>52,445</b>	<b>59,536</b>	<b>61,574</b>	<b>73,051</b>	<b>37,251</b>	<b>45,694</b>	<b>45,034</b>	<b>55,540</b>	<b>51,697</b>

(1) Aberdeen to Buckie port districts; (2) Wick to Kinlochbervie; (3) Lochinver to Oban; (4) Campbeltown to Ayr

Table 27. Liveweight and value of landings by Scottish based vessels, by main (1) species, 1999 to 2003

	Landings into UK & abroad (tonnes)														
	Into UK					Abroad					Total				
	1999	2000	2001	2002	2003	1999	2000	2001	2002	2003	1999	2000	2001	2002	2003
Bass	214	47	78	112	130	7	0	-	1	0	222	47	78	113	130
Blue ling	3,597	2,147	3,765	2,533	441	20	18	15	30	8	3,617	2,165	3,780	2,563	449
Brill	9	9	11	4	6	40	49	61	43	75	49	58	72	47	81
Catfish	617	723	577	420	445	11	23	13	13	14	628	746	589	433	459
Cod	29,955	23,336	17,253	16,822	8,727	616	332	317	283	261	26,571	23,668	17,570	17,105	8,988
Dabs	76	43	39	29	25	1,153	764	660	649	582	1,229	807	699	678	607
Dogfish	2,880	2,836	2,695	2,349	3,563	705	548	822	713	871	3,585	3,384	3,517	3,061	4,434
Dover Sole	28	25	24	11	15	492	345	309	239	233	520	370	333	250	248
Forkbeard	198	232	333	383	500	388	561	229	152	145	586	793	561	534	645
Greenland halibut	943	638	788	940	1,120	2	15	5	8	4	945	653	793	948	1,125
Gurnards	44	120	205	311	302	64	110	96	54	73	107	229	301	365	374
Haddock	66,269	46,212	37,315	47,178	37,710	151	87	155	158	89	66,419	46,300	37,471	47,336	37,799
Hake	1,667	1,367	859	688	681	334	242	180	153	213	2,001	1,609	1,038	841	894
Halibut	224	170	130	176	249	3	1	1	10	1	227	171	131	186	250
Lemon sole	2,617	2,226	1,835	901	817	233	151	166	142	149	2,850	2,376	2,001	1,044	966
Ling	6,371	5,567	5,074	5,209	3,420	607	480	498	321	59	6,978	6,048	5,572	5,530	3,479
Megrim	3,192	3,137	2,796	2,476	2,127	55	58	30	37	78	3,247	3,195	2,826	2,513	2,205
Monks	11,690	11,375	11,272	9,727	7,080	260	202	720	636	267	11,950	11,577	11,993	10,363	7,347
Plaice	2,830	2,188	2,149	1,485	1,298	5,200	5,934	6,552	6,999	5,744	8,029	8,122	8,701	8,484	7,042
Pollack (Lythe)	608	813	764	629	747	8	2	8	6	3	616	815	772	635	750
Redfish	1,199	777	1,001	951	1,616	214	147	69	164	152	1,413	924	1,071	1,115	1,768
Saithe (Coalfish)	7,832	7,463	7,043	7,231	6,378	39	37	37	305	95	7,871	7,500	7,080	7,536	6,473
Sharks	91	159	81	40	76	365	351	954	732	308	456	510	1,036	772	384
Skates & Rays	2,353	2,238	2,119	1,977	2,128	143	205	211	171	299	2,496	2,443	2,331	2,148	2,427
Turbot	153	161	130	98	86	176	161	189	203	156	329	322	319	302	243
Tusk	722	874	706	586	333	63	2	25	6	1	785	876	731	592	334
Whiting	20,628	19,634	12,481	8,916	6,536	31	39	58	51	45	20,660	19,674	12,539	8,967	6,581
Witches	1,593	1,835	1,970	1,465	1,337	216	276	276	274	273	1,809	2,112	2,246	1,739	1,610
Other demersal	9,023	11,545	3,841	3,733	1,342	7,603	6,983	226	2,705	221	16,626	18,528	4,067	6,438	1,563
<b>Total demersal</b>	<b>173,623</b>	<b>147,898</b>	<b>117,335</b>	<b>117,378</b>	<b>89,234</b>	<b>19,198</b>	<b>18,123</b>	<b>12,884</b>	<b>15,258</b>	<b>10,420</b>	<b>192,820</b>	<b>166,020</b>	<b>130,219</b>	<b>132,636</b>	<b>99,654</b>
Blue Whiting	38,432	17,704	20,023	8,047	9,728	60,422	28,344	30,124	18,355	19,015	98,854	46,047	50,147	26,402	28,743
Mackerel	37,109	48,975	59,874	92,587	99,098	107,397	1,380	109,313	75,754	47,680	144,507	50,355	169,188	168,341	146,778
Herring	40,881	36,622	39,907	39,588	50,902	43,574	122,128	20,271	13,067	10,654	84,455	158,749	60,177	52,656	61,556
Sprats	7,368	4,014	1,356	2,575	2,543	907	-	-	-	-	8,275	4,014	1,356	2,575	2,543
Other pelagic	5,249	6,887	10,081	7,460	1,021	12,503	37,140	13,517	3,607	213	17,751	44,028	23,598	11,067	1,235
<b>Total pelagic</b>	<b>129,040</b>	<b>114,202</b>	<b>131,241</b>	<b>150,257</b>	<b>163,293</b>	<b>224,802</b>	<b>188,992</b>	<b>173,224</b>	<b>110,784</b>	<b>77,562</b>	<b>353,841</b>	<b>303,194</b>	<b>304,466</b>	<b>261,041</b>	<b>240,854</b>
Edible Crabs	5,824	7,855	6,941	6,014	5,724	7	3	2	30	20	5,831	7,858	6,944	6,044	5,744
Lobsters	509	391	290	323	287	0	0	1	0	1	509	391	291	323	288
Mussels	780	864	853	735	841	-	-	-	-	-	780	864	853	735	841
Nephrops	22,136	21,155	20,318	20,768	20,406	43	30	35	32	36	22,179	21,185	20,353	20,800	20,441
Queen Scallops	5,112	4,372	6,083	7,482	5,467	-	-	-	-	17	5,112	4,372	6,083	7,482	5,484
Scallops	9,031	9,668	12,642	11,682	12,534	4	0	-	0	1	9,034	9,668	12,642	11,682	12,535
Squid	1,161	860	720	1,190	2,223	153	129	111	180	100	1,314	989	831	1,370	2,323
Velvet Crabs	1,885	2,414	2,230	1,971	1,519	-	-	-	-	-	1,885	2,414	2,230	1,971	1,519
Whelks	1,315	2,321	1,615	855	812	48	0	0	40	117	1,362	2,321	1,615	896	929
Other shellfish	1,960	1,992	1,620	711	712	90	21	91	129	80	2,050	2,013	1,711	840	792
<b>Total shellfish</b>	<b>49,713</b>	<b>51,892</b>	<b>53,313</b>	<b>51,731</b>	<b>50,525</b>	<b>345</b>	<b>184</b>	<b>240</b>	<b>411</b>	<b>373</b>	<b>50,058</b>	<b>52,075</b>	<b>53,553</b>	<b>52,143</b>	<b>50,898</b>
<b>Total landings</b>	<b>352,375</b>	<b>313,992</b>	<b>301,889</b>	<b>319,366</b>	<b>303,052</b>	<b>244,345</b>	<b>207,298</b>	<b>186,348</b>	<b>126,453</b>	<b>88,354</b>	<b>596,720</b>	<b>521,290</b>	<b>488,237</b>	<b>445,819</b>	<b>391,406</b>

	Landings into UK & abroad (value £'000)														
	Into UK					Abroad					Total				
	1999	2000	2001	2002	2003	1999	2000	2001	2002	2003	1999	2000	2001	2002	2003
Bass	1,477	259	457	693	745	62	0	-	2	1	1,540	259	457	695	745
Blue ling	2,846	1,787	3,583	2,515	537	10	11	9	19	8	2,856	1,797	3,591	2,534	545
Brill	33	37	41	16	21	203	222	262	216	309	236	259	304	232	330
Catfish	902	1,000	814	669	638	19	29	18	18	15	921	1,029	832	687	653
Cod	35,139	32,948	23,289	23,525	13,649	880	470	466	429	384	36,018	33,418	23,755	23,954	14,032
Dabs	41	20	18	16	12	996	707	555	445	354	1,037	728	573	461	366
Dogfish	2,228	2,339	2,534	2,411	3,704	416	338	614	466	520	2,644	2,678	3,148	2,876	4,224
Dover Sole	137	109	121	48	69	2,842	1,982	2,142	1,573	1,628	2,978	2,092	2,263	1,622	1,696
Forkbeard	128	162	217	264	368	512	745	309	203	200	641	907	526	467	568
Greenland halibut	1,576	1,076	1,392	1,633	1,836	2	20	8	11	8	1,578	1,095	1,400	1,645	1,844
Gurnards	16	33	86	145	211	20	143	109	50	65	36	177	196	195	277
Haddock	54,329	46,794	31,660	30,832	25,254	135	60	98	72	69	54,464	46,854	31,758	30,905	25,323
Hake	2,469	1,892	1,445	1,344	1,237	2,211	687	344	291	408	4,680	2,579	1,789	1,636	1,646
Halibut	661	555	503	640	912	21	4	5	10	6	682	559	508	650	918
Lemon sole	5,026	4,708	4,161	2,165	1,803	558	357	451	395	335	5,583	5,065	4,612	2,560	2,138
Ling	6,287	5,600	5,587	5,668	3,579	1,391	1,321	1,287	828	153	7,678	6,921	6,874	6,496	3,732
Megrim	5,045	4,440	4,023	4,045	4,291	229	244	124	147	336	5,274	4,684	4,147	4,193	4,627
Monks	27,373	26,492	25,635	21,050	14,424	1,007	761	3,584	2,927	1,093	28,380	27,253	29,219	23,977	15,517
Plaice	2,966	1,575	1,561	1,018	1,101	7,630	6,376	7,245	8,067	8,001	10,596	7,951	8,806	9,085	9,102
Pollack (Lythe)	670	922	886	702	781	12	2	9	10	3	682	924	896	712	784
Redfish	1,032	640	831	929	3,639	299	347	155	202	244	1,330	987	986	1,131	3,883
Saithe (Coalfish)	3,642	2,920	3,000	2,960	2,592	24	14	18	194	73	3,666	2,934	3,018	3,154	2,665
Sharks	84	158	48	49	171	799	804	2,678	1,872	595	884	962	2,727	1,922	766
Skates & Rays	1,729	1,783	1,686	1,452	1,706	362	549	524	411	689	2,091	2,332	2,210	1,863	2,395
Turbot	622	502	645	523	497	1,471	1,036	1,135	1,250	1,168	2,093	1,538	1,780	1,773	1,665
Tusk	518	557	488	423	227	70	2	33	5	1	588	560	520	428	228
Whiting	11,457	12,137	8,350	5,254	4,219	14	18	27	24	22	11,471	12,155	8,377	5,278	4,241
Witches	1,473	1,582	1,692	1,422	1,669	879	1,186	1,185	1,188	1,085	2,352	2,768	2,878	2,611	2,754
Other demersal	2,092	1,936	2,484	2,530	1,305	1,134	542	444	366	222	3,226	2,478	2,928	2,895	1,527
<b>Total demersal</b>	<b>171,993</b>	<b>154,965</b>	<b>127,238</b>	<b>114,942</b>	<b>91,196</b>	<b>24,212</b>	<b>18,979</b>	<b>23,839</b>	<b>21,692</b>	<b>17,995</b>	<b>196,205</b>	<b>173,944</b>	<b>151,077</b>	<b>136,634</b>	<b>109,191</b> </

Chart 10. Value of landings per Scottish based over 10 metres vessel, by vessel type 1987 to 2003

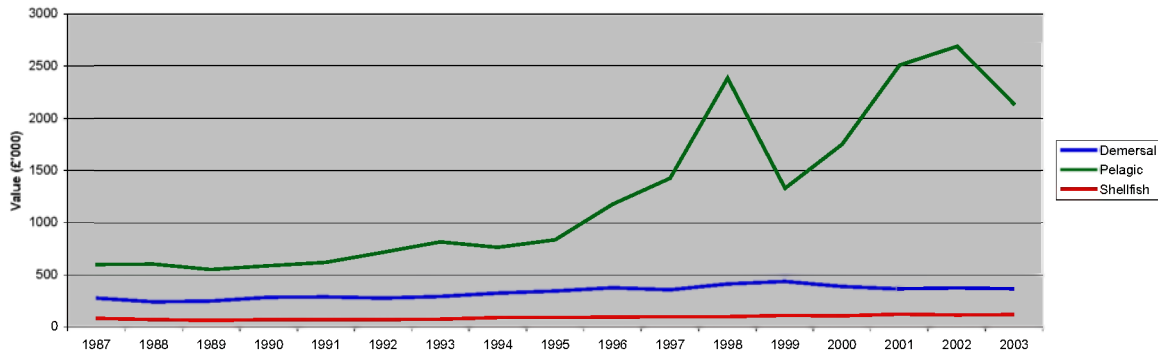


Table 28. Liveweight and value of landings abroad by Scottish based vessels, by country of landing, 1999 to 2003

		Tonnes				Value (£ thousand)					
		1999	2000	2001	2002	2003	1999	2000	2001	2002	2003
EU:	Denmark	77,191	51,785	38,863	35,057	16,973	7,415	7,177	8,098	9,260	3,938
	Eire	3,917	1,774	5,319	1,923	6,016	1,022	517	1,044	718	1,205
	France	2,217	2,157	2,676	1,484	361	571	380	508	348	73
	Germany	0	0	0	178	167	0	0	0	187	208
	Holland	10,731	7,861	9,776	9,367	7,447	15,038	10,950	12,629	12,493	12,029
Non-EU:	Spain	3,474	3,235	3,735	3,105	2,683	9,981	8,053	8,987	7,684	6,122
	Faroes	28,674	24,664	19,102	6,009	3,374	4,560	5,566	5,345	1,153	299
EU:	Brazil	0	0	582	404	0	0	0	3,036	1,919	0
	Iceland	1,713	101	54	0	2,330	84	99	52	0	185
	Norway	116,424	115,705	106,241	68,926	49,002	24,761	37,122	46,214	37,140	23,444
<b>Total</b>		<b>244,340</b>	<b>207,298</b>	<b>186,348</b>	<b>126,453</b>	<b>88,354</b>	<b>63,432</b>	<b>69,880</b>	<b>85,912</b>	<b>70,902</b>	<b>47,503</b>

Table 29. Liveweight and value of landings from specified ICES areas by Scottish based vessels, by main (1) species, 2003

ICES area	Liveweight (tonnes)								Value (£'000)														
	North sea		Area Faroes		West Scotland		Irish sea		Rest of area VII	Other	Total	North sea		Area Faroes		West Scotland		Irish sea		Rest of area VII	Other	Total	
	IV a	IV b	II a	V b	VI a	VI b	VII a	VII b				IV a	IV b	II a	V b	VI a	VI b	VII a	VII b				
Bass	0	2	-	-	0	-	0	128	0	130	0	11	-	-	0	-	0	733	1	745			
Blue ling	12	0	1	18	381	24	-	1	11	449	15	0	2	23	461	32	-	1	11	545			
Brill	0	38	-	-	1	22	1	1	17	81	1	165	-	-	2	80	4	6	72	330			
Catfish	328	43	1	9	11	54	-	-	13	459	474	54	1	13	16	80	-	-	-	16	653		
Cod	7,076	633	5	200	868	57	15	9	124	8,988	11,182	837	8	372	1,337	102	23	17	154	14,032			
Dabs	5	562	-	0	10	3	1	-	26	607	2	343	-	0	4	3	0	-	14	366			
Dogfish	901	169	-	5	2,401	207	38	687	27	4,434	1,025	150	-	5	2,415	154	47	403	25	4,224			
Dover Sole	0	182	-	-	1	-	4	1	60	248	1	1,274	-	-	4	-	15	5	398	1,696			
Forkbeard	5	-	0	7	429	38	-	166	-	645	4	-	0	5	311	29	-	219	-	588			
Greenland halibut	112	-	57	171	740	41	-	-	5	1,125	197	-	80	264	1,238	55	-	-	11	1,844			
Grenadiers	0	0	-	9	112	41	-	-	0	163	0	0	-	7	107	46	-	-	0	160			
Gurnards	49	245	-	0	29	0	14	34	3	374	10	200	-	0	6	0	10	51	1	277			
Haaddock	25,717	5,626	12	181	4,560	1,606	36	10	52	37,799	16,201	3,973	9	214	3,449	1,379	34	8	55	25,323			
Hake	202	34	0	1	210	4	8	436	0	884	299	50	0	1	440	10	19	826	0	1,646			
Halibut	156	29	7	22	30	6	0	0	0	250	534	136	10	98	113	26	1	0	2	918			
John Dory	9	0	-	0	32	0	1	11	-	53	19	1	-	0	78	0	2	63	-	162			
Lemon sole	383	469	0	25	60	15	7	3	3	966	855	1,002	0	97	122	31	12	10	9	2,138			
Ling	2,129	66	8	129	955	90	12	86	4	3,479	2,112	70	9	162	1,088	105	12	170	6	3,732			
Megrims	1,225	2	2	6	558	279	7	127	0	2,205	2,473	2	3	13	1,133	603	8	391	0	4,627			
Monks	5,733	246	15	94	700	116	23	419	1	7,347	11,628	484	50	232	1,463	171	45	1,442	2	15,517			
Mullet	0	49	-	-	0	-	0	0	0	49	1	187	-	-	0	-	-	0	0	188			
Plaice	745	5,433	0	12	242	7	12	1	590	7,042	600	7,657	0	20	198	4	13	1	609	9,102			
Pollack (Lythe)	654	21	0	0	61	0	12	1	0	750	677	25	0	0	66	0	14	1	0	784			
Reotfish	373	0	184	82	806	116	-	11	195	1,768	378	0	155	91	840	163	-	22	2,234	3,883			
Roes	67	3	0	2	8	1	0	0	1	82	102	7	0	3	13	2	0	0	2	128			
Saithe (Coalfish)	4,576	157	9	554	1,052	89	20	5	10	6,473	1,772	64	3	300	468	41	10	3	4	2,665			
Scabbardfish	-	-	-	5	78	8	-	1	-	93	-	-	-	-	8	133	14	-	2	156			
Sharks	6	3	0	0	88	41	0	228	18	384	11	14	0	0	146	105	0	437	54	766			
Skates & Rays	651	57	3	5	1,296	105	60	239	11	2,427	495	38	3	5	1,035	134	63	613	9	2,385			
Turbot	52	149	0	3	14	3	1	10	10	243	280	1,062	0	23	88	18	4	102	87	1,665			
Tusk	166	0	3	11	89	63	-	0	1	334	117	1	2	10	61	38	-	0	0	228			
Whiting	5,219	508	5	25	751	11	32	5	24	6,581	3,414	267	5	26	488	6	19	3	14	4,241			
Witches	658	123	5	4	281	367	4	168	0	1,610	674	151	5	6	273	937	5	703	0	2,754			
Other flatfish	74	13	0	4	13	1	0	-	-	105	138	19	0	13	23	2	0	-	-	194			
Other demersal	396	215	0	2	211	10	2	125	57	1,018	162	100	0	1	111	17	1	133	13	539			
<b>Total demersal</b>	<b>57,677</b>	<b>15,077</b>	<b>318</b>	<b>1,588</b>	<b>17,078</b>	<b>3,427</b>	<b>311</b>	<b>2,913</b>	<b>1,265</b>	<b>99,654</b>	<b>55,847</b>	<b>18,341</b>	<b>346</b>	<b>2,012</b>	<b>17,730</b>	<b>4,385</b>	<b>362</b>	<b>6,365</b>	<b>3,802</b>	<b>109,191</b>			
Blue Whiting	65	-	-	30	3,253	21,054	-	-	3,593	28,743	0	-	-	1	260	1,671	-	-	236	47	2,215		
Herring	39,445	322	9,215	-	12,573	-	-	-	-	61,556	4,931	36	1,937	-	1,517	-	-	-	-	-	8,422		
Mackerel	42,246	9	-	510	100,509	-	-	-	3,503	146,778	18,997	5	-	183	46,206	-	-	-	1,233	-	66,624		
Sprats	-	-	-	-	2,543	-	-	-	-	2,543	-	-	-	-	280	-	-	-	-	-	280		
Other pelagic	21	0	2	1	533	6	0	672	-	1,235	5	0	0	0	78	3	0	111	-	197			
<b>Total pelagic</b>	<b>81,777</b>	<b>332</b>	<b>9,217</b>	<b>541</b>	<b>119,412</b>	<b>21,060</b>	<b>0</b>	<b>7,767</b>	<b>748</b>	<b>240,854</b>	<b>23,933</b>	<b>41</b>	<b>1,938</b>	<b>185</b>	<b>48,341</b>	<b>1,674</b>	<b>0</b>	<b>1,580</b>	<b>47</b>	<b>77,738</b>			
Edible crabs	1,681	203	-	-	3,860	-	-	1	0	5,744	1,818	177	-	-	4,200	-	-	-	1	0	6,195		
Green crabs	173	-	-	-	45	-	-	-	-	218	86	-	-	-	22	-	-	-	-	-	108		
Lobsters	89	72	-	-	125	0	2	-	0	288	1,035	792	-	-	1,328	1	27	-	0	3,183			
Mussels	838	-	-	-	1	-	3	-	-	841	238	-	-	-	4	-	9	-	-	251			
Nephrops	7,737	2,673	-	1	9,913	5	53	56	3	20,441	16,861	6,530	-	10	28,487	39	107	204	6	52,244			
Other crabs	2	10	-	-	3	47	-	2	-	64	7	9	-	-	3	78	-	-	5	102			
Queen scallops	18	-	-	-	953	-	4,514	-	-	5,484	18	-	-	-	381	-	1,734	-	-	2,134			
Red crabs	-	-	-	-	19	3	-	4	-	26	-	-	-	-	75	19	-	17	-	111			
Scallops	2,864	971	-	1	5,678	32	1,023	2,166	-	12,535	4,175	1,202	-	1	8,799	84	1,743	3,423	-	19,426			
Squid	1,426	333	0	5	365	84	14	95	1	2,323	3,130	835	0	6	682	164	31	539	4	5,391			
Surf Clams																							



Table 30. Liveweight and value of landings by Scottish based vessels, by main (1) species and overall vessel length group (metres), 2003

	Liveweight (tonnes)										Value (£'000)											
	Overall vessel length group										Total	Overall vessel length group										Total
	<8	8-10	>10-12	>12-15	>15-18	>18-24	>24-30	>30-40	>40-50	over 50		<8	8-10	>10-12	>12-15	>15-18	>18-24	>24-30	>30-40	>40-50	over 50	
Bass	-	0	0	42	0	2	46	40	0	130	-	0	0	235	1	11	278	220	0	745		
Blue ling	-	-	-	-	-	1	316	113	20	449	-	-	-	-	0	388	126	30	-	545		
Brill	-	0	0	0	2	1	0	42	35	81	-	0	0	0	6	3	1	166	154	330		
Catfish	-	0	-	0	5	161	232	41	20	459	-	0	-	0	6	218	338	62	30	653		
Cod	3	44	9	46	258	2,833	5,087	451	257	8,988	6	59	6	50	294	4,089	8,407	754	367	14,032		
Dabs	-	1	-	0	0	20	7	316	263	607	-	1	-	0	0	8	3	190	165	366		
Dogfish	0	25	15	37	168	1,001	1,948	1,234	6	4,434	0	23	13	31	153	913	2,118	967	6	4,224		
Dover Sole	-	0	0	0	1	6	0	92	148	248	-	1	0	1	4	23	1	656	1,011	1,696		
Forkbeard	-	-	-	-	-	2	340	303	-	645	-	-	-	-	1	265	302	0	-	568		
Greenland halibut	-	-	-	-	-	0	898	176	51	1,125	-	-	-	-	0	1,475	279	90	-	1,844		
Grenadiers	-	-	-	-	-	0	77	57	29	163	-	-	-	-	0	75	49	35	-	160		
Gurnards	-	-	-	0	17	206	76	49	26	374	-	-	-	0	11	180	19	55	11	277		
Haddock	0	98	10	480	1,161	13,344	19,536	3,110	60	37,799	0	82	6	234	552	7,133	14,190	3,081	46	25,323		
Hake	0	1	1	9	30	108	349	393	4	894	0	0	1	10	46	127	759	699	4	1,646		
Halibut	-	0	0	2	10	87	123	24	2	250	-	3	1	8	45	352	421	79	10	918		
John Dory	-	0	-	0	1	17	22	13	0	53	-	0	-	0	2	38	52	69	1	162		
Lemon sole	0	3	1	12	55	467	233	121	74	966	0	4	1	20	97	947	591	307	170	2,138		
Ling	-	3	3	3	62	782	2,196	392	40	3,479	-	2	0	2	55	788	2,311	524	49	3,732		
Megrim	-	0	0	2	48	1,243	593	264	55	2,205	-	0	0	1	67	2,546	1,115	757	140	4,627		
Monks	0	11	4	54	323	3,171	2,751	876	157	7,347	0	17	6	86	581	6,201	5,976	2,232	418	15,517		
Mullet	-	-	-	0	0	44	4	0	0	49	-	-	-	0	1	173	14	0	0	188		
Plaice	-	7	1	38	81	723	378	2,608	3,206	7,042	-	7	0	31	61	618	329	3,613	4,443	9,102		
Pollack (Lythe)	-	1	6	0	22	79	582	57	1	750	-	1	0	0	24	87	615	55	1	784		
Redfish	-	29	-	-	0	1	1,007	503	228	1,768	-	2,021	-	-	0	1	1,012	568	282	3,883		
Roes	-	0	-	0	1	21	52	6	1	82	-	0	-	0	1	34	82	9	1	128		
Saithe (Coalfish)	5	11	2	20	127	1,447	3,975	715	171	6,473	2	5	1	8	48	487	1,674	347	92	2,665		
Scabbardfish	-	-	-	-	-	-	59	31	4	93	-	-	-	-	-	101	46	9	-	156		
Sharks	0	0	3	1	0	3	30	346	-	384	2	1	4	1	1	15	36	708	0	766		
Skates & Rays	0	13	6	27	209	916	706	410	141	2,427	0	7	3	14	159	710	572	788	141	2,395		
Turbot	0	0	0	1	6	36	30	71	99	243	0	2	0	6	28	202	173	553	700	1,665		
Tusk	-	1	-	0	2	65	163	91	12	334	-	1	-	0	2	41	109	67	9	228		
Whiting	0	21	1	41	358	3,002	2,935	187	36	6,581	0	9	1	14	161	1,685	2,205	146	21	4,241		
Witches	0	5	1	13	112	686	249	542	1	1,610	0	3	1	9	98	675	316	1,650	1	2,754		
Other flatfish	-	1	0	3	8	54	34	5	0	105	-	1	0	4	12	105	58	13	0	194		
Other demersal	0	11	20	35	272	194	75	184	210	1,018	0	9	19	23	76	162	58	157	34	539		
Total demersal	10	288	84	867	3,342	30,721	45,111	13,861	5,354	99,654	11	2,258	62	789	2,592	28,574	46,137	20,296	8,471	109,191		
Blue Whiting	-	-	-	-	-	0	-	53	28,690	28,743	-	-	-	-	-	0	-	3	2,212	2,215		
Herring	0	0	-	4	0	1	0	2,659	5,873	53,018	61,556	0	0	-	1	0	0	299	742	7,379	8,422	
Mackerel	204	157	0	0	2	8	6	1,000	14,429	130,971	146,778	78	62	0	0	2	4	2	451	6,216	59,810	66,624
Sprats	-	-	-	0	1,970	573	-	-	-	2,543	-	-	-	-	217	63	-	-	-	-	280	
Other pelagic	-	-	-	24	-	0	50	50	688	1,235	-	-	-	-	34	0	12	27	88	36	197	
Total pelagic	204	158	0	29	1,972	583	56	3,708	21,042	213,101	240,854	78	62	0	34	219	67	14	778	7,049	69,437	77,738
Edible crabs	221	994	1,381	691	1,015	1,418	-	6	19	5,744	258	1,122	1,268	670	1,185	1,672	-	8	12	6,195		
Green crabs	102	71	46	-	-	-	-	-	-	218	50	36	22	-	-	-	-	-	-	108		
Lobsters	80	91	76	20	13	7	0	1	0	288	875	996	820	243	171	74	0	3	1	3,183		
Mussels	1	0	840	-	-	-	-	-	-	841	2	2	247	-	-	-	-	-	-	251		
Nephrops	211	1,984	2,083	2,201	5,337	7,843	715	62	6	20,441	1,347	8,530	6,782	4,615	10,899	17,833	1,979	243	15	52,244		
Other crabs	3	5	2	-	-	-	-	54	0	64	3	4	2	-	-	0	-	93	0	102		
Queen scallops	7	3	2	1	216	4,678	568	10	-	5,484	9	3	1	1	111	1,780	225	3	-	2,134		
Red crabs	-	-	-	-	-	-	-	26	-	26	-	-	-	-	-	-	-	111	-	111		
Scallops	275	419	574	753	3,377	3,030	1,165	2,891	51	12,535	553	741	812	1,140	5,041	4,757	1,515	4,736	130	19,426		
Squid	-	143	13	177	283	1,021	481	197	6	2,323	-	268	23	418	623	2,367	950	730	12	5,391		
Surf Clams	10	191	10	38	-	1	7	-	-	256	6	140	6	24	-	2	11	-	-	189		
Velvet crabs	595	525	333	51	16	0	-	-	-	1,519	931	825	517	84	24	0	-	-	-	2,381		
Whelks	43	274	217	256	0	18	2	51	68	929	15	141	110	126	0	5	1	22	30	451		
Other shellfish	129	15	63	1	1	10	0	9	0	227	165	87	76	2	0	4	0	41	0	375		
Total shellfish	1,675	4,714	5,640	4,189	10,258	18,025	2,939	3,307	151	50,898	4,216	12,896	10,686	7,322	18,054	28,495	4,681	5,991	201	92,542		
Total landings	1,890	5,159	5,725	5,084	15,572	49,329	48,106	20,876	26,547	213,118	391,406	4,305	15,215	10,748	8,146	20,865	57,136	50,833	27,064	15,721	69,437	279,471

(1) Total value over £0.1m

Chart 11. Value of landings by Scottish based vessels by species type, 1987 to 2003

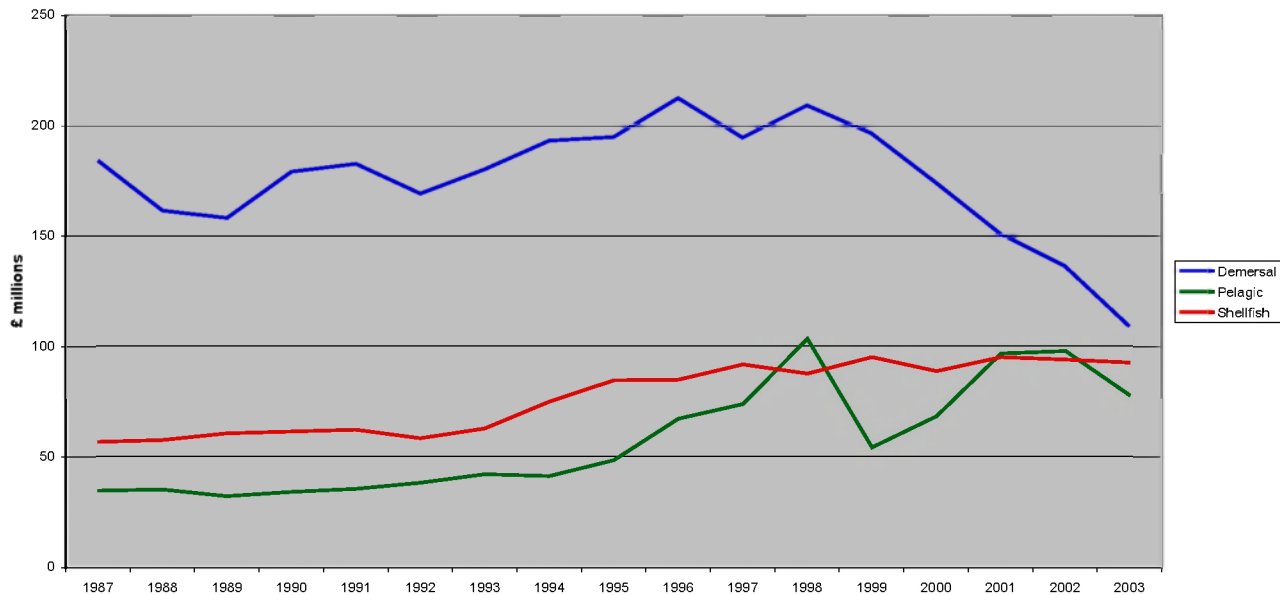




Table 31. Liveweight and value of landings by Scottish based vessels, by main (1) species and gear 2003

	Liveweight (tonnes)								Value (£'000)							
	Demersal trawl	Demersal seine	Demersal twin trawl	Lines	Gill nets	Beam trawl	Other demersal	Demersal total	Demersal trawl	Demersal seine	Demersal twin trawl	Lines	Gill nets	Beam trawl	Other demersal	Demersal total
Bass	9	0	-	-	-	0	-	10	40	0	-	-	-	1	-	41
Blue ling	364	-	83	1	2	0	-	449	467	-	76	0	0	0	-	545
Brill	2	2	0	-	22	53	-	79	8	0	0	-	80	230	-	323
Catfish	361	31	47	-	-	12	-	451	516	42	70	-	-	15	-	643
Cod	6,641	1,197	714	22	33	204	-	8,810	10,439	1,846	1,162	29	51	290	-	13,818
Dabs	114	8	0	-	-	479	-	601	68	3	0	-	-	292	-	364
Dogfish	2,717	180	536	299	544	4	112	4,391	2,782	155	610	199	376	3	67	4,193
Dover Sole	4	0	0	-	-	238	-	242	20	0	0	-	-	1,651	-	1,672
Forkbeard	548	-	14	9	74	-	1	644	446	-	9	11	101	-	1	568
Greenland halibut	1,018	-	107	0	0	-	-	1,125	1,657	-	187	0	0	-	-	1,844
Grenadiers	145	-	18	-	-	0	-	163	149	-	10	-	-	0	-	160
Gurnards	285	35	20	-	0	33	-	373	239	19	4	-	0	14	-	276
Haddock	26,728	8,292	2,253	15	0	55	-	37,344	18,629	4,985	1,438	17	0	34	-	25,103
Hake	579	63	26	63	153	5	-	890	922	94	38	265	316	5	-	1,640
Halibut	197	24	22	0	0	1	-	244	739	78	71	1	1	3	-	893
John Dory	47	1	3	-	1	0	-	52	147	2	7	-	3	1	2	161
Lemon sole	623	109	82	-	-	125	-	939	1,384	238	182	-	-	285	-	2,089
Ling	2,584	85	494	227	45	11	0	3,446	2,704	81	539	286	80	14	0	3,704
Megrim	1,698	79	354	-	0	36	-	2,168	3,664	143	678	-	1	86	-	4,572
Monks	5,388	270	843	1	453	106	8	7,068	11,230	471	1,786	2	1,130	313	37	14,968
Mullet	40	9	0	-	-	0	-	49	157	30	0	-	-	1	-	188
Plice	1,288	247	63	-	-	5,361	-	6,959	1,304	209	45	-	-	7,439	-	8,997
Pollack (Lythe)	571	80	88	1	1	0	-	741	591	81	107	1	1	0	-	782
Redfish	1,519	0	226	2	14	0	-	1,762	3,588	0	225	2	67	0	-	3,883
Roes	59	14	5	2	0	1	-	81	90	23	9	3	0	2	-	127
Saithe (Coalfish)	5,287	453	626	7	0	2	-	6,376	2,172	169	278	4	0	1	-	2,624
Scabbardfish	80	-	13	-	-	-	-	93	138	-	18	-	-	-	-	156
Sharks	44	0	0	261	79	0	0	384	74	1	0	460	230	0	1	766
Skates & Rays	1,829	94	210	21	54	142	45	2,396	1,826	58	169	22	89	139	73	2,376
Turbot	67	7	5	-	2	146	8	236	396	39	27	-	15	1,061	85	1,623
Tusk	256	2	45	23	0	7	-	333	169	1	34	18	0	5	-	227
Whiting	4,598	1,266	452	0	-	52	-	6,369	2,936	944	245	0	-	27	-	4,152
Witches	1,370	57	115	-	1	0	-	1,545	2,503	73	111	-	6	0	-	2,694
Other flatfish	81	11	9	-	-	0	-	102	152	15	19	-	-	0	-	186
Other demersal	768	13	30	15	9	88	-	923	385	12	22	30	13	32	-	494
Total demersal	67,908	12,632	7,502	967	1,488	7,164	175	97,837	72,730	9,818	8,179	1,351	2,565	11,945	265	106,853
Other species	22,479	165	1,108	357	85	1,967	1	26,162	36,936	407	2,642	141	227	770	1	41,124

	Liveweight (tonnes)			Value (£'000)		
	Pelagic purse seine	Pelagic trawl	Pelagic total	Pelagic purse seine	Pelagic trawl	Pelagic total
Blue whiting	-	27,781	27,781	-	2,155	2,155
Herring	-	58,269	58,269	-	7,860	7,860
Mackerel	852	141,867	142,719	289	64,637	64,926
Sprats	-	2,524	2,524	-	278	278
Other pelagic	48	1,064	1,112	4	154	158
Total pelagic	900	231,503	232,403	293	75,083	75,376
Other species	38	290	329	56	860	916

	Liveweight (tonnes)						Value (£'000)					
	Creel fishing	Nephrop trawl	Dredging	Hand shellfishing	Other methods	Shellfish total	Creel fishing	Nephrop trawl	Dredging	Hand shellfishing	Other methods	Shellfish total
Edible crabs	5,704	0	7	-	-	5,712	6,162	0	4	-	-	6,166
Green crabs	218	-	0	-	-	218	108	-	0	-	-	108
Lobsters	286	0	0	0	-	286	3,163	1	0	0	-	3,164
Mussels	1	-	840	1	-	841	3	-	247	1	-	251
Nephrops	1,588	3,979	8	1	-	5,576	10,322	9,069	15	6	-	19,412
Other crabs	9	0	-	-	-	9	9	0	-	-	-	9
Queen scallops	-	1	5,238	7,464	-	5,247	-	0	2,008	9	-	2,017
Scallops	23	9	12,024	422	-	12,476	38	13	18,343	871	-	19,264
Squid	1	22	0	-	-	23	1	39	0	-	-	40
Surf Clams	0	1	255	0	-	256	0	1	188	0	-	189
Velvet crabs	1,516	0	3	0	-	1,519	2,376	0	4	0	-	2,381
Whelks	786	8	4	-	-	798	390	3	3	-	-	396
Other shellfish	11	0	61	133	1	206	85	0	46	178	4	313
Total shellfish	10,142	4,021	18,440	564	1	33,168	22,656	9,126	20,858	1,065	4	53,710
Other species	117	1,335	54	0	-	1,507	72	1,289	131	0	-	1,492

(1) Total value over £0.1m

Chart 12. Liveweight landings by Scottish based vessels, by quarter, 2003

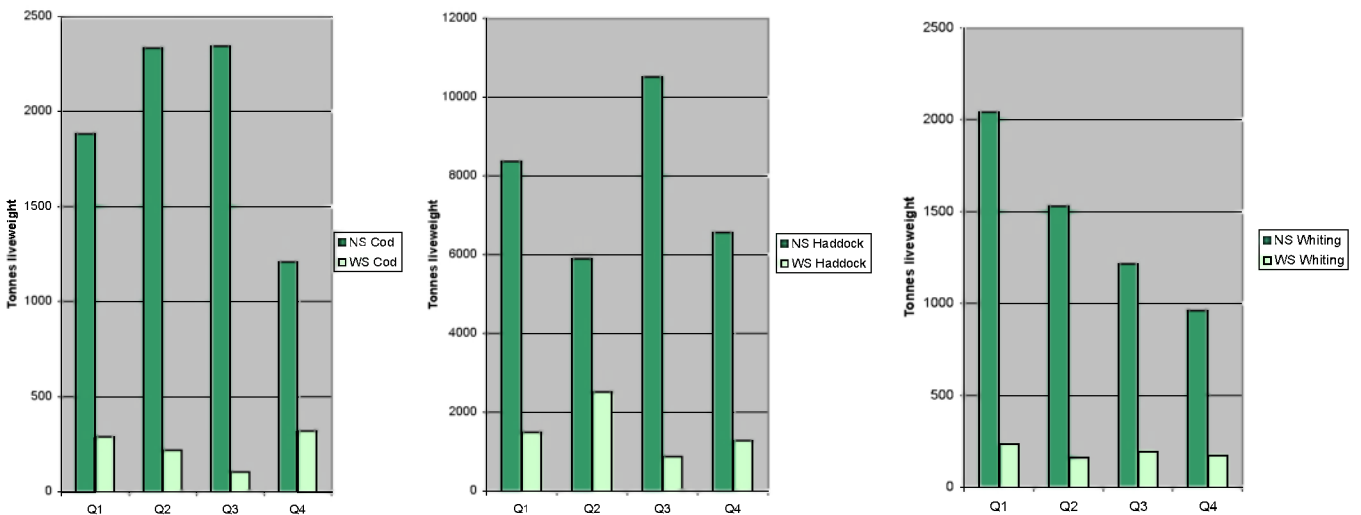
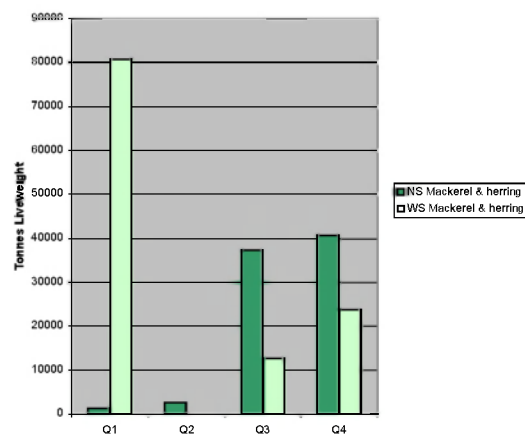
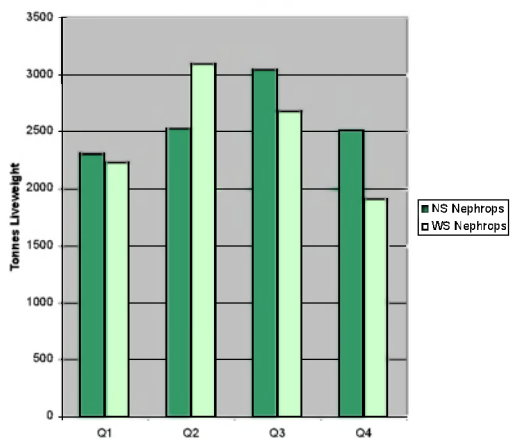


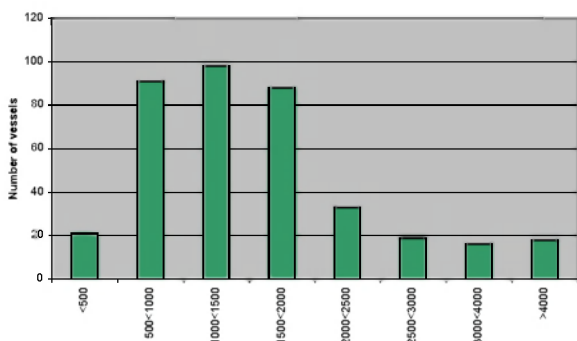
Chart 12. continued



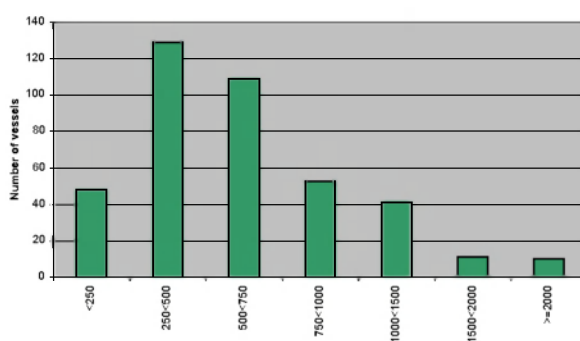
NS:North Sea WS:West of Scotland

Chart 13. Average value of landings per day at sea by Scottish based over 10m based vessels, by vessel type, 2003

Demersal Vessels



Shellfish Vessels



Pelagic Vessels

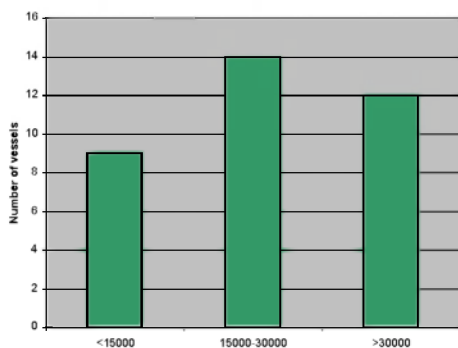
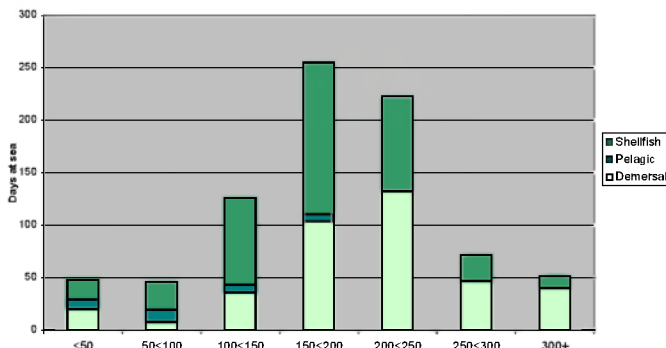


Chart 14. Days at sea by Scottish based over 10m vessels by vessel type, 2003



(1) £ per day. A day in which fishing activity, of whatever duration, takes place is counted as a day fished.

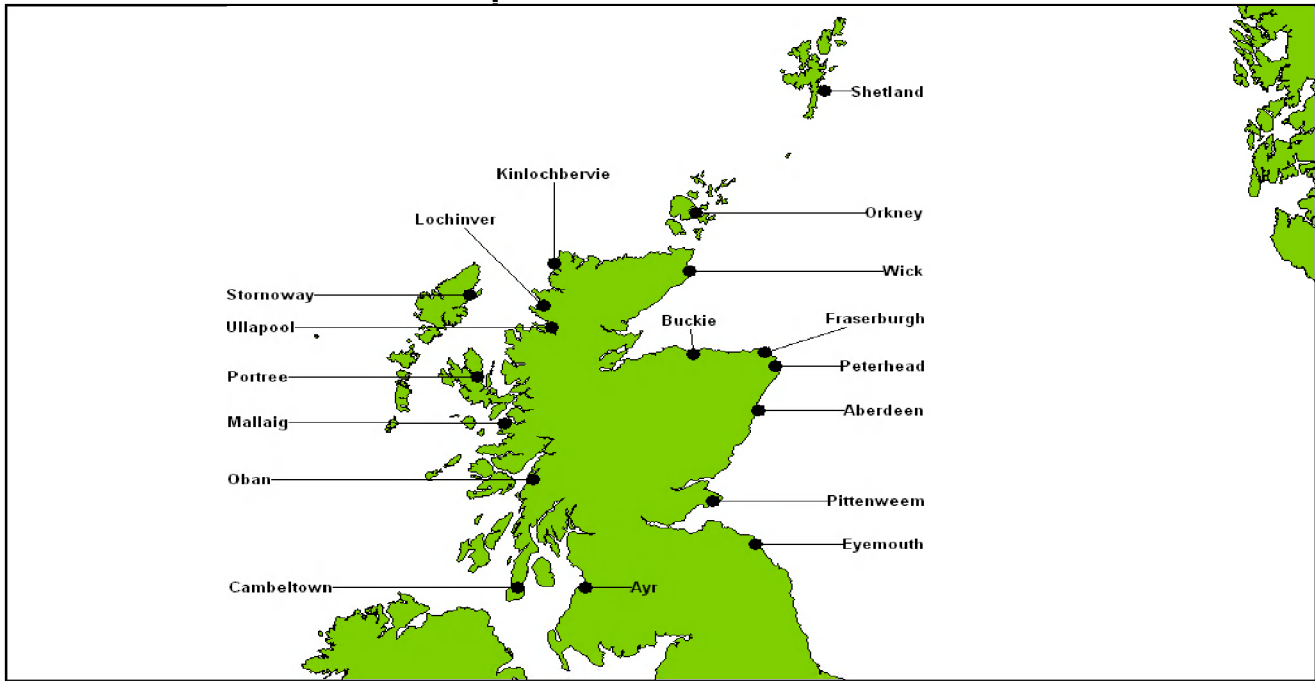
Table 32. Days fished by Scottish based over 10 metres vessels by loe area, 2003

ICES AREA	Demersal	Pelagic	Shellfish
IVb, Central North Sea	8,617	9	6,396
Vb, Faroes	578	3	2
VIIj, Great Sole	1,044	28	-
VIIa, Irish Sea	384	-	1,680
VIIh, Little Sole	84	1	162
IVa, Northern North Sea	34,705	407	12,829
VIIc, Porcupine Bank	439	4	-
VIIb, Rockall	1,579	41	-
IVc, Southern North Sea	248	-	-
VIIk, West Great Sole	788	-	-
VIIb, West Ireland	100	11	-
VIa, West Scotland	16,125	459	38,392
VIIe, Western English Channel	258	62	558
Other	166	37	151
<b>Total</b>	<b>64,112</b>	<b>1,060</b>	<b>60,168</b>

Table 33. Days fished by Scottish based over 10 metres vessels by length group, 2003

Length group	Demersal	Pelagic	Shellfish
>10<15	2714	-	33279
15<20	16622	-	22419
20<25	21590	-	2752
25<30	16336	-	744
30<35	2864	-	760
35 and over	4986	1060	214
<b>Total</b>	<b>64,112</b>	<b>1,060</b>	<b>60,168</b>

## Annex 1 - Port districts and ports in Scotland



### Aberdeen

Aberdeen  
Arbroath  
Catterline  
Gourdoun  
Johnshaven  
Montrose  
Stonehaven

### Ayr

Annan  
Ayr  
Ballantrae  
Cumbraes  
Drummore  
Dunure  
Girvan  
Kirkcudbright  
Largs & Greenock  
Maidens  
Portpatrick  
Stranraer  
Troon & Saltcoats  
Whithorn

### Buckie

Buckie  
Burghead  
Findochty  
Hopeman  
Lossiemouth  
Portknockie

### Campbeltown

Ardrishaig  
Arran  
Bruichladdich  
Bute  
Campbeltown  
Carradale  
Colonsay  
Crinan  
Gigha  
Islay  
Jura  
Port Askaig  
Port Ellen  
Tarbert  
Tayinloan  
Tayvallich  
West Loch Tarbert

### Eyemouth

Burnmouth  
Cove  
Dunbar  
Eyemouth  
Granton  
North Berwick  
Port Seton  
St Abbs

### Fraserburgh

Fraserburgh  
Gardenstown  
Macduff  
Pennan  
Portsoy  
Rosehearty  
Sandhaven & Pitullie  
Whitehills

### Kinlochbervie

Eriboll  
Kinlochbervie  
Scourie

### Lochinver

Culkein/Drumbeg  
Kylesku  
Lochinver

### Mallaig

Ardnamurchan  
Arisaig  
Corpach  
Glenuig  
Mallaig  
Salen

### Oban

Coll  
Fort William  
Loch Buie (Mull)  
Loch Scridain (Mull)  
Luing  
Oban  
Tiree  
Tobermory (Mull)

### Orkney

Hoy  
Kirkwall  
Rousay  
S Ronaldsay  
Sanday  
Stromness  
Stronsay  
Tingwall  
Westray

### Peterhead

Boddam  
Peterhead  
Port Errol

### Pittenweem

Anstruther  
Burntisland  
Crail  
Methil & Leven  
Pittenweem  
St Andrews  
St Monans

### Portree

Bracadale  
Broadford  
Dunvegan  
Kyle  
Portree  
Sleat  
Snizort  
Strathaird  
Torridon

### Shetland

Central Mainland  
Lerwick  
Northmavine  
S Mainland & Fair Isle  
Scalloway  
Skerries  
West Mainland  
Whalsay  
Yell, Fetlar & Unst

### Stornoway

Barra  
Benbecula  
Bernera (Lewis)  
Berneray (N Uist)  
Grimsay  
Lochs  
North Harris  
North Uist  
Portnaguran & Ness  
Scalpay  
South Harris  
South Uist & Eriskay  
Stornoway

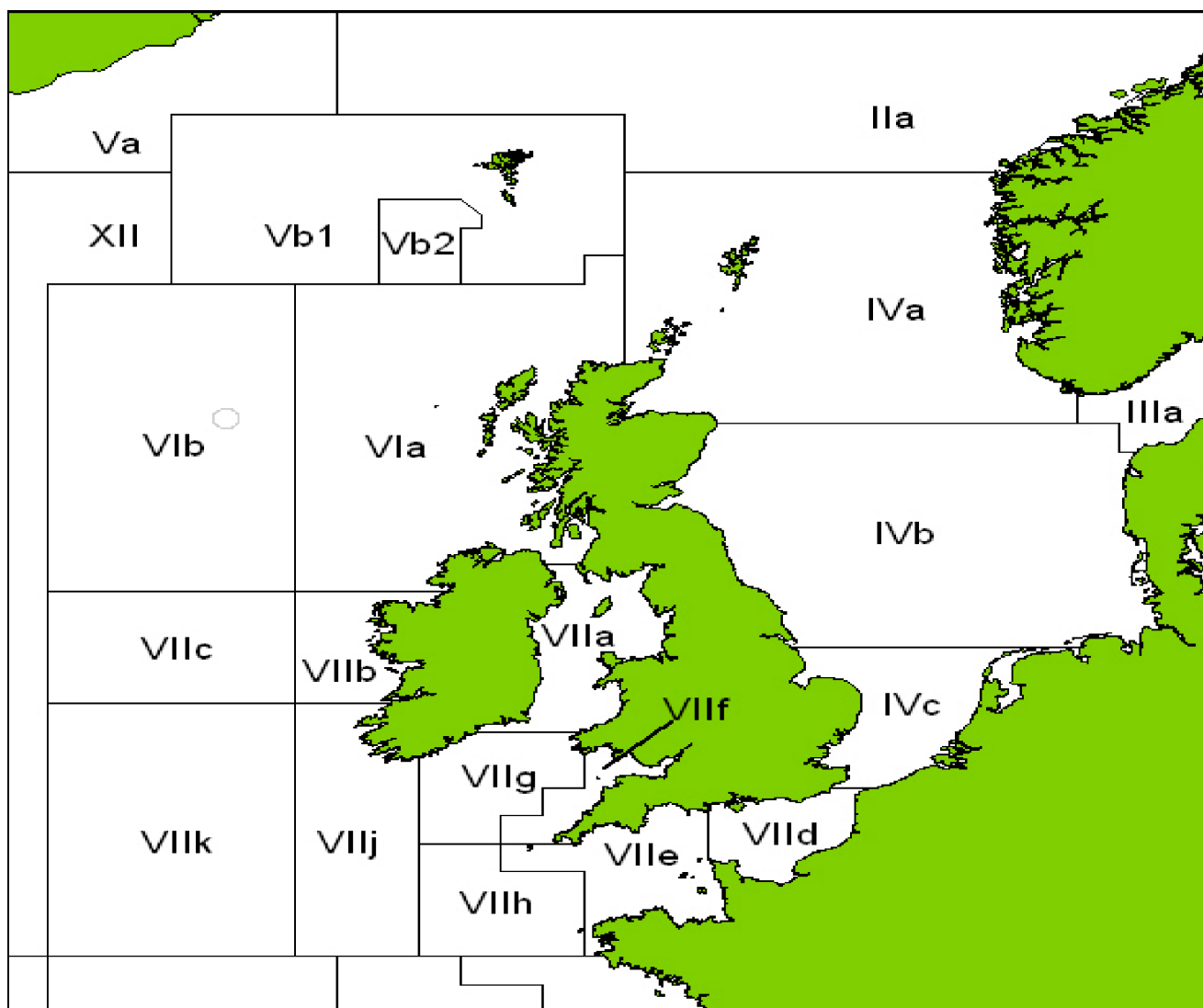
### Ullapool

Achiltibuie  
Aultbea  
Gairloch  
Ullapool

### Wick

Avoch  
Brora  
Dunbeath  
Helmsdale  
Invergordon  
Inverness  
John O'Groats  
Keiss  
Lybster  
Portmahomack  
Portskerra  
Scrabster  
Wick

## Annex 2 - ICES Fishing Areas around the UK Coastline



## SCOTTISH EXECUTIVE STATISTICAL SERVICES

### OUR AIM

The aim of the Statistical Service is to provide relevant and reliable information, analysis and advice that meet the needs of government, business and the people of Scotland.

### OBJECTIVES

1. **To produce statistics and analysis relevant to user needs by**
  - Developing the range of statistics and analysis we produce;
  - Where practicable improving timeliness;
  - Providing more statistics disaggregated by age, gender and ethnicity;
  - Developing more data for small areas through the Neighbourhood Statistics project;
  - Contributing to production of comparable statistics across the UK and internationally.
2. **To ensure effective use of our statistics by**
  - Contributing more directly to policy processes inside and where possible outside government;
  - Improving access to and presentation of data and analysis;
  - Improving the advice provided on statistics.
3. **To work effectively with users and providers by**
  - Maintaining arrangements to consult and involve users and providers
  - Involving users and providers in planning developments in outputs and processes
4. **To develop the quality of statistics by**
  - Assuring and improving quality as an integral part of data collection and analysis and through regular reviews in line with National Statistics quality strategy;
  - Developing statistical methods, systems and classifications;
  - Working with the rest of the Government Statistical Service to develop joint approaches/solutions where appropriate.
5. **To assure the integrity of statistics by**
  - Maintaining and promoting integrity through implementation of the National Statistics Code of Practice and related protocols;
  - Safeguarding the confidentiality of data subjects.
6. **To ensure the efficient and effective delivery of statistics products and services by**
  - Making best use of all sources including administrative sources,
  - Minimising the burden on data providers through Survey Monitoring & Advice;
  - Ensuring value for money;
  - Making best use of Information and Communications Technology;
  - Working with other analysts;
  - Ensuring effective communication within the Statistician Group.
7. **To develop our workforce and competences**
  - Ensuring recruitment of staff with the necessary skills and potential;
  - Ensuring development of expertise amongst existing staff;
  - Promoting and upholding the standards of the statistics profession.

### This is a National Statistics publication

"This is a National Statistics publication. It has been produced to high professional standards set out in the National Statistics Code of Practice and Release Practice Protocol. { [HYPERLINK "http://www.statistics.gov.uk/about\\_ns/cop/default.asp" }](http://www.statistics.gov.uk/about_ns/cop/default.asp)

These statistics undergo regular quality assurance reviews to ensure that they meet customer needs. They are produced free from any political interference."

Details of pre-release access will be provided in the Scottish Executive Statistics Website under 'Forthcoming Releases'

## Correspondence and enquiries

Enquiries on Scottish Fisheries Statistics 2003 should be addressed to:

Patrick McDonald  
 Fisheries Statistics  
 Environment and Rural Affairs  
 Room 515, Pentland House  
 Edinburgh EH14 1TY  
 Telephone: 0131-244 6441; Fax: 0131-244 6288  
 e-mail: fisheriesstatistics@scotland.gsi.gov.uk

General enquiries on Scottish Executive statistics can be addressed to:

Ryan Stewart  
 Office of the Chief Statistician  
 Scottish Executive  
 3 Floor West Rear, St Andrews House  
 EDINBURGH EH1 3DG  
 Telephone: (0131) 244 0442; Fax: (0131) 244 0335  
 e-mail: statistics.enquiries@scotland.gsi.gov.uk

Advice on specific areas of Scottish Executive statistical work can be obtained from staff at the telephone numbers given below:

### Scottish Executive Statistics contacts

Schools – qualifications	(0131) 244 0313
Schools – pupils and teachers	(0131) 244 1689
Further and Higher Education	(0141) 242 0273
The Economy	(0131) 244 2234
Labour market	(0141) 242 5446
Business	(0141) 242 5446
Income, Tax and Benefits	(0131) 244 2583
Local government finance	(0131) 244 7033
Environment, planning & local government staffing	(0131) 244 0445
Equality	(0131) 244 0442
Housing	(0131) 244 7236
Transport	(0131) 244 7255
Health	(0131) 244 3432
Community Care	(0131) 244 3777
Social Justice	(0131) 244 0442
Scottish Executive personnel	(0131) 244 3926
Agricultural census and labour force	(0131) 244 6150
Fisheries	(0131) 244 6441
Courts and law	(0131) 244 2227
Recorded crime and prisons	(0131) 244 2225

### Other contacts for Scottish statistics

Forestry Commission	(0131) 314 6337
The Scottish Funding Councils for Higher and Further Education	(0131) 313 6575
General Register Office for Scotland - Vital statistics and publications - Population statistics, census statistics or digital boundary products	(0131) 314 4243 (0131) 314 4254

For **general enquiries about National Statistics** in the United Kingdom Government contact the National Statistics Public Enquiry Service on

**020 7533 5888**  
 minicom: 01633 812399  
 Email: { HYPERLINK mailto:info@statistics.gov.uk }  
 Fax: 01633 652747  
 Letters: room DG/18, 1 Drummond Gate,  
 LONDON SW1V 2QQ

You can also find National Statistics on the internet - go to **www.statistics.gov.uk**

[If you would like to be consulted about new or existing statistical collections or to receive notification of forthcoming statistical publications, please register your statistical interest on the Scottish Executive ScotStat web site at www.scotland.gov.uk/scotstat](http://www.scotland.gov.uk/scotstat)

Current staff names, e-mail addresses and the publications listed below as well as a range of other statistical publications can be found on the Scottish Executive Web site at **www.scotland.gov.uk/stats**

Further information on the General Register Office for Scotland is available on the website **www.gro-scotland.gov.uk**

### Most recent Statistical Publications relating to the **Agriculture, Forestry and Fisheries** theme

Ref no.	Title	Last published	Price
	Scottish Salmon and Sea Trout Catches 2003	September 2004	
	Scottish Shellfish Farms Annual Production Survey 2003	May 2004	
	Scottish Fish Farms Annual Production Survey 2002	October 2003	

Additional copies of these publications may be purchased from **Scottish Executive Publication Sales, Blackwell's Bookshop, 53 South Bridge, Edinburgh, EH1 1YS**, Telephone: 0131 622 8283, Fax: 0131 622 8258. Cheques should be made payable to 'Blackwell's Bookshop'.

### Complaints and suggestions

If you are not satisfied with our service, please write to the Chief Statistician, Mr Rob Wishart, 4 Floor East Rear, St Andrews House, Edinburgh, EH1 3DG, Telephone: (0131) 244 0302, e-mail [rob.wishart@scotland.gsi.gov.uk](mailto:rob.wishart@scotland.gsi.gov.uk). We also welcome any comments or suggestions that would help us to improve our standards of service.

Price **£12**

ISBN 0 7559 1059-1

Crown Copyright

Brief extracts from the Crown Copyright material in this publication may be reproduced provided the source is fully acknowledged.



**£12.00**

ISBN 0-7559-1059-1



9 780755 909636

Fish photograph on cover courtesy of:  
Tom McInnes, FRS Marine Laboratory

© Crown copyright 2003

Astron B 37864 9/04