

**REFERENCE COPY**

Do Not Remove from the Library

U. S. Fish and Wildlife Service

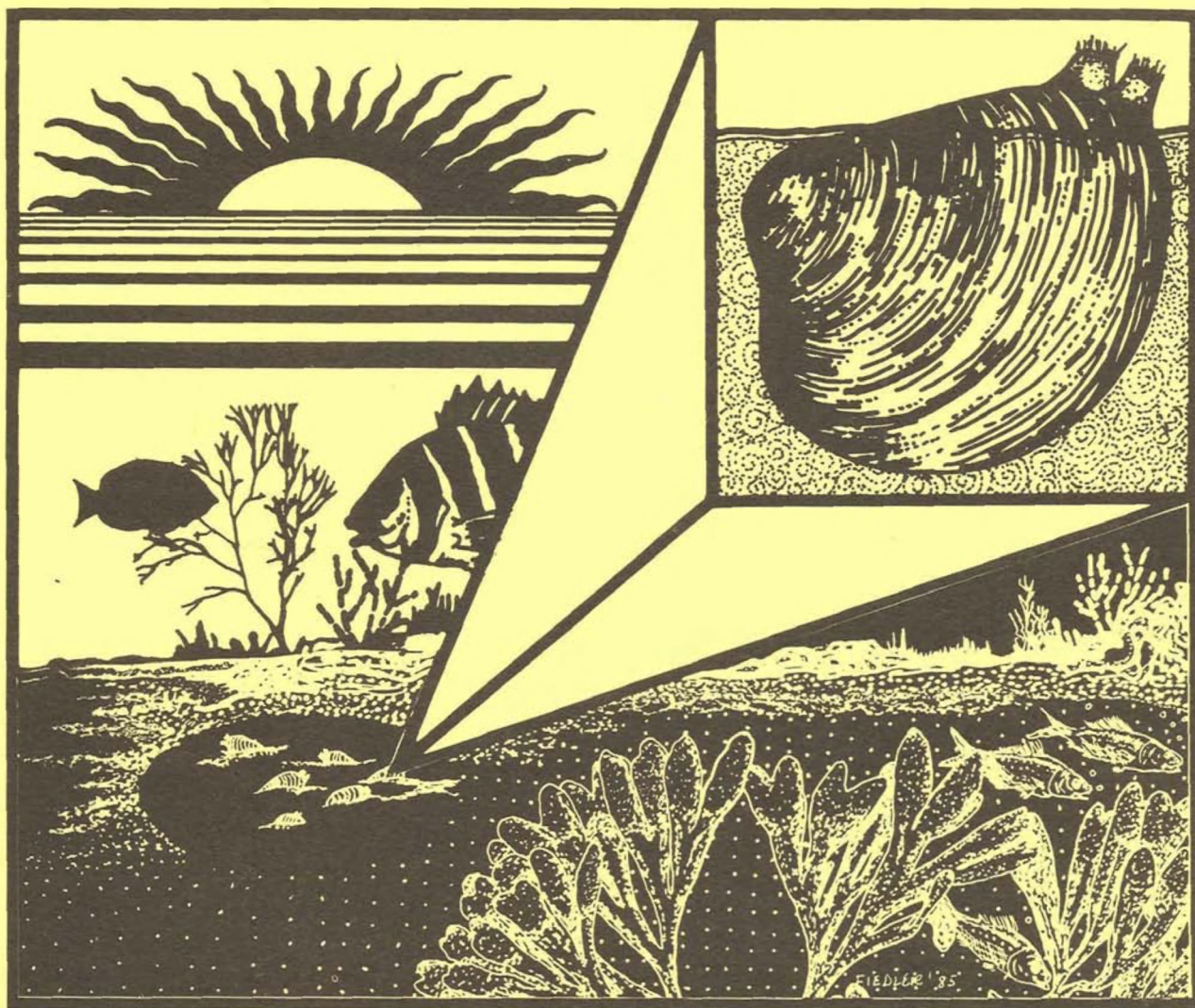
Biological Report 82 (11. 31)  
April 1985

National Wetlands Research Center  
700 Cajun Dome Boulevard  
Lafayette, Louisiana 70506

TR EL-82-4

**Species Profiles: Life Histories and  
Environmental Requirements of Coastal Fishes  
and Invertebrates (Gulf of Mexico)**

**COMMON RANGIA**



Fish and Wildlife Service

U.S. Department of the Interior

Coastal Ecology Group  
Waterways Experiment Station

U.S. Army Corps of Engineers

This is one of the first reports to be published in the new "Biological Report" series. This technical report series, published by the Research and Development branch of the U.S. Fish and Wildlife Service, replaces the "FWS/OBS" series published from 1976 to September 1984. The Biological Report series is designed for the rapid publication of reports with an application orientation, and it continues the focus of the FWS/OBS series on resource management issues and fish and wildlife needs.

Species Profiles: Life Histories and Environmental Requirements  
of Coastal Fisheries and Invertebrates (Gulf of Mexico)

COMMON RANGIA

by

Mark W. LaSalle  
and  
Armando A. de la Cruz  
Department of Biological Sciences  
P.O. Drawer GY  
Mississippi State University  
Mississippi State, MS 39762

Project Officer  
John Parsons  
National Coastal Ecosystems Team  
U.S. Fish and Wildlife Service  
1010 Gause Boulevard  
Slidell, LA 70458

Performed for

Coastal Ecology Group  
Waterways Experiment Station  
U.S. Army Corps of Engineers  
Vicksburg, MS 39180

and

National Coastal Ecosystems Team  
Division of Biological Services  
Research and Development  
Fish and Wildlife Service  
U.S. Department of the Interior  
Washington, DC 20240

This series should be referenced as follows:

U.S. Fish and Wildlife Service. 1983-19  . Species profiles: life histories and environmental requirements of coastal fishes and invertebrates. U.S. Fish Wildl. Serv. Biol. Rep. 82(11). U.S. Army Corps of Engineers, TR EL-82-4.

This profile should be cited as follows:

LaSalle, M.W., and A.A. de la Cruz. 1985. Species profiles: life histories and environmental requirements of coastal fishes and invertebrates (Gulf of Mexico) -- common rangia. U.S. Fish Wildl. Serv. Biol. Rep. 82(11.31). U.S. Army Corps of Engineers, TR EL-82-4. 16 pp.

## PREFACE

This species profile is one of a series on coastal aquatic organisms, principally fish, of sport, commercial, or ecological importance. The profiles are designed to provide coastal managers, engineers, and biologists with a brief comprehensive sketch of the biological characteristics and environmental requirements of the species and to describe how populations of the species may be expected to react to environmental changes caused by coastal development. Each profile has sections on taxonomy, life history, ecological role, environmental requirements, and economic importance, if applicable. A three-ring binder is used for this series so that new profiles can be added as they are prepared. This project is jointly planned and financed by the U.S. Army Corps of Engineers and the U.S. Fish and Wildlife Service.

Suggestions or questions regarding this report should be directed to one of the following addresses.

Information Transfer Specialist  
National Coastal Ecosystems Team  
U.S. Fish and Wildlife Service  
NASA-Slidell Computer Complex  
1010 Gause Boulevard  
Slidell, LA 70458

or

U.S. Army Engineer Waterways Experiment Station  
Attention: WESER-C  
Post Office Box 631  
Vicksburg, MS 39180

## CONVERSION TABLE

### Metric to U.S. Customary

<u>Multiply</u>	<u>By</u>	<u>To Obtain</u>
millimeters (mm)	0.03937	inches
centimeters (cm)	0.3937	inches
meters (m)	3.281	feet
kilometers (km)	0.6214	miles
square meters (m <sup>2</sup> )	10.76	square feet
square kilometers (km <sup>2</sup> )	0.3861	square miles
hectares (ha)	2.471	acres
liters (l)	0.2642	gallons
cubic meters (m <sup>3</sup> )	35.31	cubic feet
cubic meters	0.0008110	acre-feet
milligrams (mg)	0.00003527	ounces
grams (g)	0.03527	ounces
kilograms (kg)	2.205	pounds
metric tons (t)	2205.0	pounds
metric tons	1.102	short tons
kilocalories (kcal)	3.968	British thermal units
Celsius degrees	1.8(°C) + 32	Fahrenheit degrees

### U.S. Customary to Metric

inches	25.40	millimeters
inches	2.54	centimeters
feet (ft)	0.3048	meters
fathoms	1.829	meters
miles (mi)	1.609	kilometers
nautical miles (nmi)	1.852	kilometers
square feet (ft <sup>2</sup> )	0.0929	square meters
acres	0.4047	hectares
square miles (mi <sup>2</sup> )	2.590	square kilometers
gallons (gal)	3.785	liters
cubic feet (ft <sup>3</sup> )	0.02831	cubic meters
acre-feet	1233.0	cubic meters
ounces (oz)	28.35	grams
pounds (lb)	0.4536	kilograms
short tons (ton)	0.9072	metric tons
British thermal units (Btu)	0.2520	kilocalories
Fahrenheit degrees	0.5556(°F - 32)	Celsius degrees

## CONTENTS

	<u>Page</u>
PREFACE .....	iii
CONVERSION FACTORS .....	v
ACKNOWLEDGMENTS .....	vi
NOMENCLATURE/TAXONOMY/RANGE .....	1
MORPHOLOGY/IDENTIFICATION AIDS .....	3
REASONS FOR INCLUSION IN SERIES .....	3
LIFE HISTORY .....	3
Spawning .....	3
Larvae and Postlarvae .....	4
Adult Activity and Feeding .....	4
Life Span .....	4
GROWTH CHARACTERISTICS .....	5
Growth Rate .....	5
Size .....	5
THE FISHERY .....	6
ECOLOGICAL ROLE .....	7
Trophic Level .....	7
Predators and Parasites .....	7
Competitors .....	7
Spatial Distribution .....	7
Density .....	7
ENVIRONMENTAL REQUIREMENTS .....	9
Temperature .....	9
Salinity .....	9
Temperature and Salinity .....	9
Oxygen .....	9
Substrate .....	10
Depth .....	10
Effects of Pollution .....	10
LITERATURE CITED .....	13

## ACKNOWLEDGMENTS

We thank Dr. Courtney T. Hackney, University of North Carolina at Wilmington and Dr. H. Dickson Hoese, University of Southwestern Louisiana, for their critical reviews of the manuscript; T. Dale Bishop and Darryl R. Clark for information and help with the literature search; Mark F. Godcharles, Jake M. Valentine, and personnel of the Alabama State Docks Department and the U.S. Army Corps of Engineers, Mobile District, for providing comments and unpublished reports; Jeanne J. Hartley for her illustration of *rangia*; and Dr. Robert J. Muncy, Betty Muncy, and Cindy Mills for help in the preparation of the manuscript.



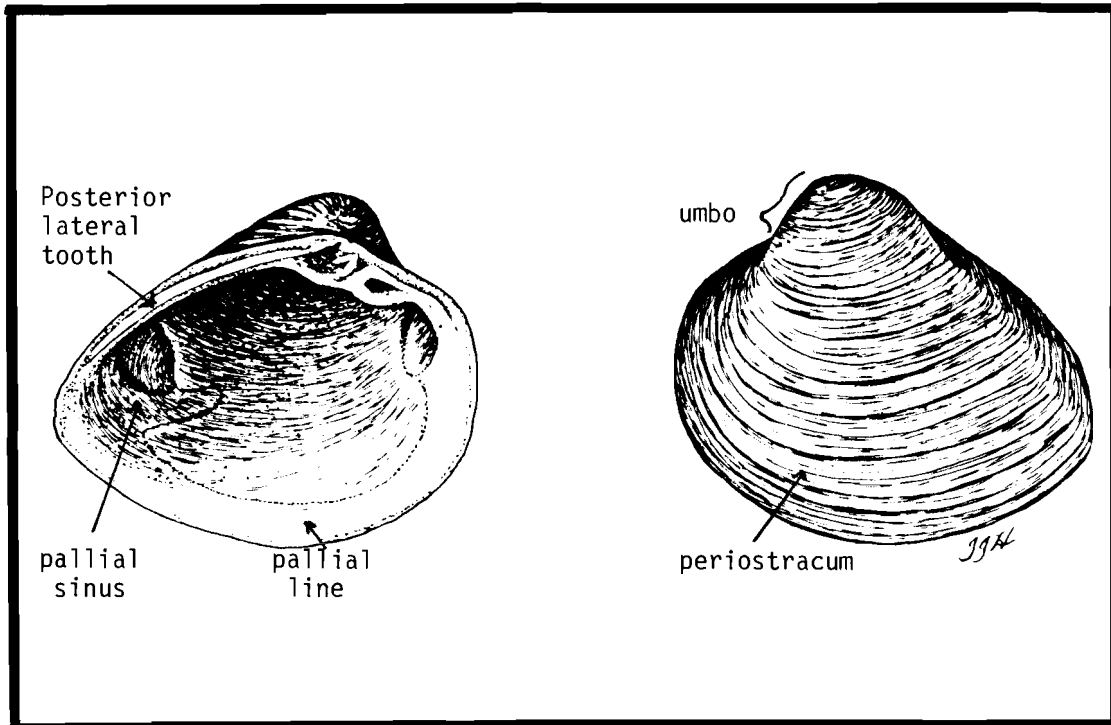


Figure 1. Common rangia.

#### COMMON RANGIA

##### NOMENCLATURE/TAXONOMY/RANGE

Scientific name.....Rangia cuneata (Gray) (Figure 1)  
 Preferred common name.....Common rangia (Andrews 1971; Fotheringham and Brunenmeister 1975)  
 Other common names.....Brackish water clam, Louisiana road clam  
 Class.....Mollusca  
 Order.....Eulamellibranchia  
 Family.....Mactridae

New Jersey (Woodburn 1962). Before 1956, living common rangia had not been collected along the Atlantic coast (Wells 1961) probably because earlier sampling in brackish water areas had been inadequate. Common rangia inhabit low salinity (0 to 18 ppt) estuarine habitats (Parker 1966; Christmas 1973; Hopkins et al. 1973; Swingle and Bland 1974).

Geographic range: The common rangia is found along the Gulf of Mexico coast (Figure 2) from northwest Florida to Laguna de Terminos, Campeche, Mexico (Dall 1894; Andrews 1971; Ruiz 1975), and along the Atlantic coast as far north as Maryland (Pfitzenmeyer and Drobeck 1964; Gallagher and Wells 1969; Hopkins and Andrews 1970) and

Geologically, the common rangia has been found in Pliocene deposits in the Carolinas and Florida and in Pleistocene deposits in Chesapeake Bay and the Potomac River, the Carolinas, Florida, the entire north coast of the Gulf of Mexico (Figure 2), and the north coast of South America (Conrad 1840; Dall 1894; Maury 1920; Richards 1939).

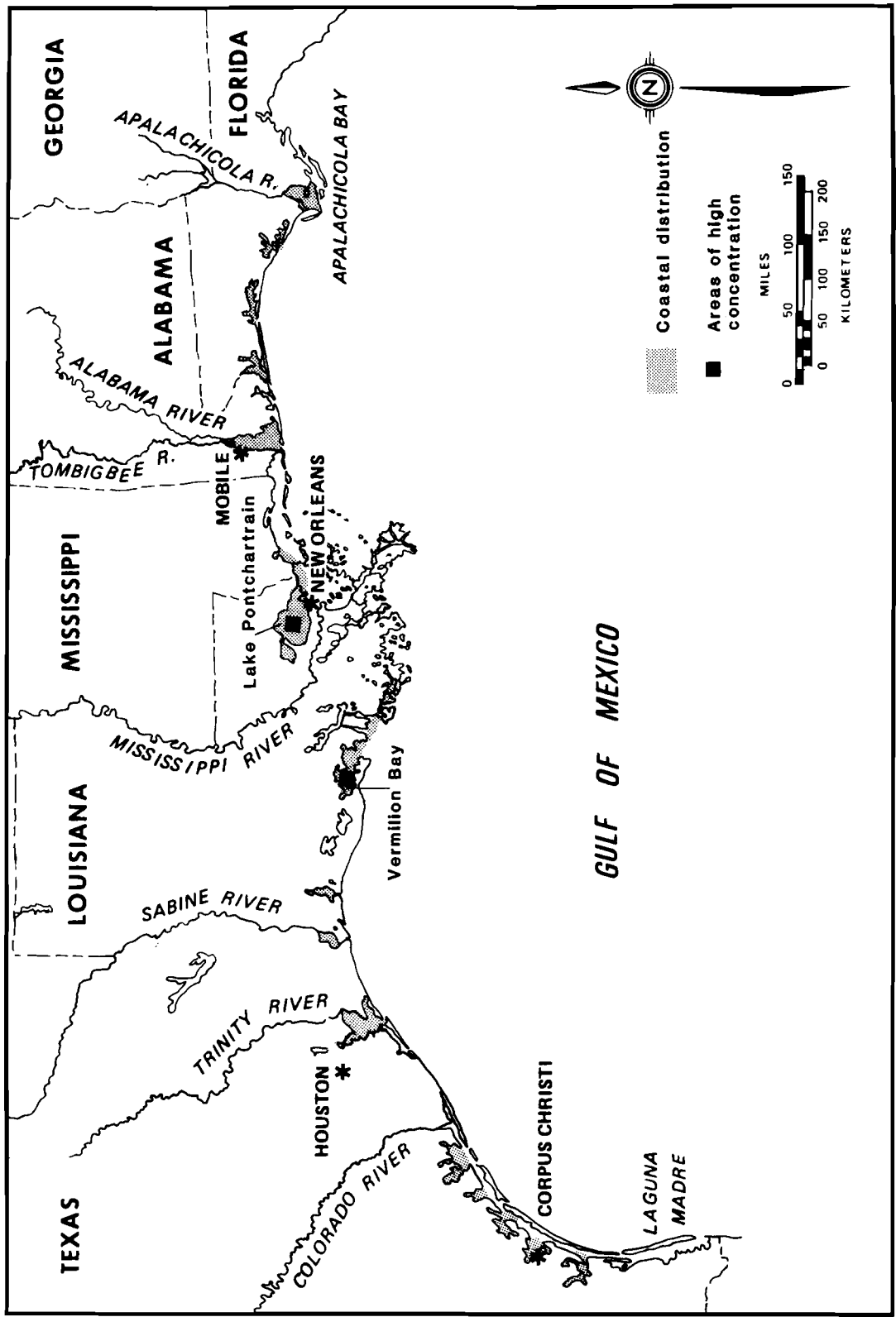


Figure 2. Distribution of common rangia along the northern coast of the Gulf of Mexico.

## MORPHOLOGY/IDENTIFICATION AIDS

The following description of common rangia is taken from Abbott (1954) and Andrews (1971, 1981). Adults range from 2.5 to 6.0 cm in length. The valves are obliquely ovate, thick, and heavy (Figure 1). The exterior of the shell is covered with a strong, rather smooth periostracum that ranges from light brown to grayish brown to black. The umbones are prominent and are near the anterior end. The shell interior is glossy white with a blue-gray tinge. The pallial sinus is small but distinct. The posterior lateral tooth is long (Figure 1). Dall (1894) mentions that most of the variability in form is related to the differences in the height of the umbones and the shape of the posterior margin of the shell. Rangia cuneata var. nasutus (Dall 1894) is believed to be a rostrate form of R. cuneata (Abbott 1954) and may be confused with a closely related species, the brown rangia (Rangia flexuosa [Conrad]). The brown rangia is 2.5 to 4.0 cm long and resembles an elongate common rangia; however, brown rangia can be easily separated from common rangia by the short posterior lateral tooth and the nondistinct pallial sinus. Brown rangia is found from Louisiana to Texas and Vera Cruz, Mexico (Andrews 1971), but is much less common than the common rangia.

## REASONS FOR INCLUSION IN SERIES

The common rangia is an important component of estuarine ecosystems (Parker 1959; Odum 1967; Odum and Copeland 1969; Copeland et al. 1974) accounting, for example, for nearly 95% of the benthic biomass in the James River Estuary, Virginia (Cain 1975). In low salinity estuarine areas common rangia functions as a link between primary producers and secondary consumers. As a non-selective filter feeder, rangia transforms large quantities of plant detritus and phytoplankton into clam biomass (Darnell 1958; Olsen 1972,

1973, 1976a; Hoese 1973). In turn, this biomass is consumed by fishes, crustaceans, and ducks (Suttkus et al. 1954; Darnell 1958; Gunter and Shell 1958; Harmon 1962; North Carolina Bureau of Sport Fisheries and Wildlife 1965; O'Heeron 1966; Cain 1972; Tarver and Dugas 1973). The shells provide hard substrate for epifaunal attachment (Hoese 1973).

The common rangia was a food item of prehistoric Indians (McIntire 1958) and it is still occasionally canned and eaten in New Jersey, Texas, North Carolina, and Mexico (Singley 1893; Woodburn 1962; Wass and Haven 1970; U.S. Department of Commerce 1971). Economically, common rangia is more important as a source of shells for road building and in the manufacture of many industrial products (Tarver and Dugas 1973; Swingle and Bland 1974; Arndt 1976). Much of this shell material is dredged from buried deposits in estuaries.

## LIFE HISTORY

### Spawning

The reproductive cycle and environmental conditions necessary for spawning are well known for common rangia. The reproductive cycle was studied in Louisiana by Fairbanks (1963), in Virginia by Cain (1975), in Florida by Olsen (1976b), and in Campeche, Mexico by Rogers and Garcia-Cubas (1981). Most rangia spawned from March to May and from late summer to November in Louisiana and from February to June and September to November in Mexico. In both areas, spawning may be continuous.

In Virginia, gametogenesis began in early April and continued throughout the summer; gametes were ripe from May through November. Gametogenesis was initiated when water temperature rose to 15°C, and spawning was initiated by a rapid increase or decrease in salinity (Cain 1975). In upstream areas of the James River,

Virginia, clams required a salinity increase of about 5 ppt associated with reduced freshwater output, but in downstream areas they required a salinity decrease of about 10 to 15 ppt associated with increased freshwater output. Spawning peaked at 5 ppt in fall. In Florida, ripe gametes and spawning were reported from July through November; spawning peaked in September. Temperature and salinity increases were suspected of triggering spawning (Olsen 1976b).

In spawning, common rangia release gametes directly into the water. Sex ratios were reported to be near 1:1 in Louisiana (Fairbanks 1963) and Mexico (Rogers and Garcia-Cubas 1981), but females outnumbered males in Virginia (Cain 1972). The incidence of hermaphroditism in this clam was reported to be 0.1% in Mexico (Rogers and Garcia-Cubas 1981) and 2.1% in Florida (Olsen 1976b). The minimum length of mature adults in Lake Pontchartrain, Louisiana, was 24 mm (Fairbanks 1963). From data on annual growth increments, Fairbanks (1963) inferred that a clam could reach minimum length in 2 to 3 years. In the James River, Virginia, Cain (1972) reported that gonads were mature in clams as small as 14 mm, which were probably clams in their second year of life.

No fecundity data are available on common rangia.

#### Larvae and Postlarvae

The early stages of development of common rangia were studied in Louisiana by Fairbanks (1963) and in Virginia by Chanley (1965). Fairbanks reported that the average diameter of eggs was about 69  $\mu\text{m}$ . Ciliated blastula developed 8.5 hours (h) after fertilization, a pelagic trochophore at 26.3 h, and a veliger at 34.3 h (93  $\mu\text{m}$  in mean diameter). In Virginia, Chanley reported that shelled larvae appeared within 24 h after fertilization. The length of different life stages were as follows:

straight-hinged larvae 0.75 to 130  $\mu\text{m}$ ; unbowed larvae 120 to 175  $\mu\text{m}$ ; and pediveligers (metamorphosed) 160 to 175  $\mu\text{m}$ . Pediveligers began to settle, lose the velum, and attain gills at 175 to 180  $\mu\text{m}$ . Metamorphosis began after 7 days (Chanley 1965).

Most settling of larvae in the James River, Virginia, took place between September and March when the animals were 230 to 500  $\mu\text{m}$  long and averaged 300  $\mu\text{m}$  (Cain 1975). A second settling period occurred in midsummer. In Lake Pontchartrain, Louisiana, Fairbanks (1963) collected juveniles as small as 375  $\mu\text{m}$  while Hoese (1973) observed several small clams (< 1 mm long) attached to a hydroid colony.

How the juvenile rangia disperse is uncertain. They may be transported to upstream areas in the more saline bottom water in an incoming tide, or by swimming during low flow or both (Cain 1975). Fairbanks (1963) reported that larvae were capable of selecting substrate for setting and preferred substrates high in organic content.

#### Adult Activity and Feeding

Common rangia move little after settling. Fairbanks (1963) observed little movement of clams in aquaria. Sikora et al. (1981) suggested that rangia are capable only of vertical movement in the sediment. Olsen (1973) reported that clams did not move in aquaria over a 4-month period even when given a choice of substrates.

Feeding of common rangia is controlled by gill palp articulations and ciliary currents over the gills (Olsen 1972). The animal extrudes pseudofeces from the mantle cavity, through the inhalant siphon when the valves are quickly closed.

#### Life Span

The life span of the common rangia has not been confirmed. If one relates the mean length (about 40 mm) of rangia

collected in Louisiana (Table 1), to estimates of growth rate (Fairbanks 1963; Wolfe and Petteway 1968), the average life span is about 4 to 5 years. A clam of the maximum expected length of 75 mm, reported by Wolfe and Petteway (1968) in Chesapeake Bay, would be 10 years old. Hopkins et al. (1973) estimated a maximum life span of 15 years.

## GROWTH CHARACTERISTICS

### Growth Rate

Annual growth increments of common rangia in the Gulf of Mexico are reported to vary from 0 to 20 mm (Fairbanks 1963; Gooch 1971; Tarver and Dugas 1973). Annual growth increments, estimated for the first 3 years of life for two populations in Lake Pontchartrain, Louisiana, were 15 to 20

mm, 5 to 9 mm, and 4 to 5 mm, respectively (Fairbanks 1963). From mean height data for clams collected in Lake Pontchartrain, Tarver and Dugas (1973) reported as much as 7.2 mm growth in a 2-month period. This rapid growth appeared to be related to warm temperatures. Annual growth rates have been reported to range from 0 to 9.7 mm for Vermilion Bay, Louisiana (Gooch 1971) and to be 3 mm in Trinity Bay, Texas (Bedinger 1974). Wolfe and Petteway (1968) calculated the following von Bertalanffy growth curve for a common rangia population in the Trent River, North Carolina:  $L = 75.62(1 - 0.995e^{-0.0193t})$ . The largest predicted length of 75.6 mm would represent 10 years of growth.

### Size

Maximum length reported was 94 mm for a common rangia from Grand Gosier Island, Louisiana (H.D. Hoese, Univ.

Table 1. Range of lengths (mm) or heights (mm) of common rangia examined in four areas of Louisiana.

Area	Length	Height	References
Lake Pontchartrain, LA	38-42 (adults)	---	Fairbanks (1963)
	1-8 (juveniles)	---	
	---	28	Tarver (1972)
	---	28-44	Tarver & Dugas (1973)
Lake Maurepas, LA	---	26	Tarver (1972)
	---	25-27	Tarver & Dugas (1973)
Vermilion Bay, LA	31-61	---	Gooch (1971)
Sabine Lake - Atchafalaya Bay, LA	28-57	---	Hoese (1973)

Southwestern La.; pers. comm.). Mean sizes (length, anterior to posterior; height, umbo to ventral margin) reported from other Louisiana estuaries are shown in Table 1. Parker (1960) and Hoese (1973) reported that the largest clams were found in the lower salinity areas of estuaries, whereas, Tarver and Dugas (1973) found that clam size increased with salinity. In Virginia, Cain (1972) noted that clams living in sand were typically larger than those living in mud.

#### THE FISHERY

The foremost commercial value of common rangia is in the use of fossil shells for road building material, oyster cultch, and as a source of calcium carbonate for the manufacture of glass, chemicals, chicken and cattle feed, wallboard, and agricultural lime (Tarver and Dugas 1973; Swingle and Bland 1974; Arndt 1976). Clam shells are harvested by large commercial hydraulic dredges. By far the largest concentrations of living clams are along the Louisiana coast. The minimum standing crop of clams estimated to be between the Atchafalaya River and Sabine Lake, Louisiana, was between 24 billion and 48 billion clams (Hoese 1973). Because of the relatively slow growth rate of rangia, Hoese (1973) suggested that no more than 5% of the living clam population should be harvested annually if current production of fossil shells is to be maintained; however, at an annual recruitment of 5% (Fairbanks 1963) the estimated shell deposits in Lake Pontchartrain would be nearly exhausted in 35 years; at 3% Tarver and Dugas (1973) estimated depletion in 18 years.

The potential sources of common rangia shell along the gulf coast have been listed by Arndt (1976). In Texas, shell occurs in the upper reaches of San Antonio Bay, Nueces and Lavaca Bays, Galveston Bay, Trinity Bay, and Sabine Lake. In Louisiana, deposits

extend from Point au Fer (Atchafalaya Bay) west to the Texas border, Calcasieu and Sabine Lakes, and Lake Pontchartrain. In Mississippi, clams live in the Pearl River Estuary and Mississippi Sound; in Alabama, in upper Mobile Bay; and in Florida in Choctawhatchee Bay, Tampa Bay, the Caloosahatchie River (Arndt 1976), and the upper reaches of Charlotte Harbor (Woodburn 1962).

The Louisiana Wildlife and Fisheries Commission (1968) estimated a statewide production of about 5 million cubic yards of clam shell in 1968 compared with 300,000 cubic yards annually in the mid-1930's. The maximum annual harvest of shell in the gulf States was 21.2 million tons in 1967 compared with 468,000 tons in 1912 (Arndt 1976). Of the material dredged in 1967, an estimated 12.2 million tons was used in construction and the remainder for road base, asphalt fill, poultry grit, cattle roughage, filter material, and whiting (pigment).

Native Americans used common rangia as food, as evidenced from shell deposits in Indian middens along the gulf coast (Singley 1893; McIntire 1958). The canning of rangia in Texas under the name of "little neck clams" by the Givens Oyster Company was reported by Singley (1893). Rangia were also canned at Cape May, New Jersey (Woodburn 1962) and in North Carolina (U.S. Department of Commerce 1971). Rangia have been collected and consumed from the Potomac Creek of the Potomac River, Maryland (Pfitzenmeyer and Drobeck 1964), to Mexico where Wass and Haven (1970) reported that this clam was served with rice as "Paella a valencianna" in restaurants. The potential use of this clam as food, however, is severely limited by contamination of large potential sources by pollution (Christmas 1973; Swingle and Bland 1974). Rangia are also used as bait for blue crabs (Godcharles and Jaap 1973).

## ECOLOGICAL ROLE

### Trophic Level

Common rangia serve to link primary producers and secondary consumers in estuarine areas. Rangia are non-selective filter feeders (Darnell 1958; Olsen 1976a) ingesting large quantities of detritus and phytoplankton. Darnell (1958) reported that gut contents contained 70% unidentifiable detritus, 10% sand, 17% algae (possibly Anabaena or Microcystis) as well as traces of diatoms, foraminifera, and vascular plant material. Olsen (1976a) reported 48 species of phytoplankton from stomach contents of common rangia, although a large portion of the material ingested was detritus (46 to 81%, depending on tidal conditions).

### Predators and Parasites

Common rangia are preyed upon by fish, crustaceans, mollusks, and ducks (Table 2; Suttkus et al. 1954; Darnell 1958; Gunter and Shell 1958; Harmon 1962; North Carolina Bureau of Sport Fisheries and Wildlife 1965; O'Heeron 1966; Cain 1972; Tarver and Dugas 1973). In addition, moon shell snails (Polinices spp.) may be predators as suggested by drill holes in rangia shells (Hoese 1973). Common rangia are abundant in the diets of blue catfish, freshwater drum, spot, black drum, river shrimp, and blue crab in Lake Pontchartrain, Louisiana (Darnell 1958, 1961). The smaller rangia are subjected to the greatest predation pressure. Clams as large as 40 mm (length or height), however, are eaten by fishes such as sheepshead and black drum (Darnell 1958; Tarver and Dugas 1973). A potential group of predators not mentioned by the above authors are the ctenophores (i.e., Mnemiopsis) which sometime appear in tremendous numbers at certain times of the year (M.W. LaSalle, pers. observ.). Ctenophores can cause mass mortality of

larvae if coincidental with rangia spawning.

The common rangia is parasitized by larvae of fellodistomatid trematodes (Fairbanks 1963). Cercariae and sporocysts of this parasite are found in the gonadal tissue, giving it an orange coloration and effecting castration. Only large clams are infected.

### Competitors

Potential competitors of common rangia may be reduced by the wide range of salinities tolerated by this clam (Odum 1967). Polymesoda caroliniana has feeding habits identical to those of rangia (Olsen 1973, 1976a), but is spatially separated from rangia; it is found primarily in intertidal areas or in small numbers in the shallow nearshore subtidal areas. In contrast, rangia live largely in the subtidal zone. Other potential competitors are apparently not adapted to fluctuating salinities.

### Spatial Distribution

Common rangia are primarily restricted to low salinity (< 19 ppt) estuaries (Maury 1920; Pulley 1952; Parker 1955, 1956, 1960; Moore 1961; Parker 1966; Odum 1967; Christmas 1973; Hoese 1973; Hopkins 1970; Hopkins et al. 1973; Swingle and Bland 1974). Rangia have been reported from areas as far as 25 miles upstream in delta rivers (Swingle and Bland 1974), but most prefer salinities of 5 to 15 ppt. Tarver and Dugas (1973) found that concentrations of clams were highest adjacent to a potential source of fresh or salt water, which may be related to the need for salinity shock required for spawning (Cain 1973). Concentrations of clams were greatest around the periphery of Lake Pontchartrain and Lake Maurepas (Tarver 1972; Dugas et al. 1974). Dispersion of adult clams is commonly clumped

Table 2. Reported predators of adult and juvenile common rangia.

Species/common name	Adults	Juveniles (<5 mm)	References
<u>Aythya affinis</u> -- lesser scaup duck		X	4,5
<u>Aythya marila</u> -- greater scaup duck		X	5
<u>Aythya collaris</u> -- ring-necked duck		X	5
<u>Anas rubripes</u> -- American black duck		X	5
<u>Anas platyrhynchos</u> -- mallard		X	5
<u>Oxyura jamaicensis</u> -- ruddy duck		X	5
<u>Dasyatis sabina</u> -- Atlantic stingray		X	2
<u>Lepisosteus productus</u> -- spotted gar		X	1,2
<u>Lepisosteus spatula</u> -- alligator gar		X	1,2
<u>Lepisosteus osseus</u> -- northern longnose gar		X	1,2
<u>Dorosoma cepedianum</u> -- gizzard shad		X	1,2
<u>Anchoa mitchilli</u> -- southern bay anchovy		X	1,2
<u>Arius felis</u> -- sea catfish		X	1,2
<u>Ictalurus furcatus</u> -- blue catfish		X	1,2,3
<u>Aplodinotus grunniens</u> -- freshwater drum		X	1,2
<u>Leiostomus xanthurus</u> -- spot		X	1,2
<u>Micropogonias undulatus</u> -- Atlantic croaker		X	1,2
<u>Pogonias cromis</u> -- black drum	X		1,2
<u>Archosargus probatocephalus</u> -- sheepshead	X	X	1,2
<u>Lagodon rhomboides</u> -- pinfish		X	2
<u>Paralichthys lethostigma</u> -- southern flounder		X	1,2
<u>Cynoscion arenarius</u> -- sand seatrout		X	1
<u>Chasmodes bosquianus</u> -- striped blenny		X	7
<u>Penaeus setiferus</u> -- white shrimp		X	1,2
<u>Macrobrachium ohlone</u> -- river shrimp		X	2
<u>Callinectes sapidus</u> -- blue crab	X	X	1,2,7
<u>Rhithropanopeus harrisi</u> -- mud crab		X	7
<u>Thais haemastoma</u> -- oyster drill	X		6
<u>Polinices</u> spp. -- moon shell (possible)	X		8

References: (1) Suttkus et al. (1954); (2) Darnell (1958); (3) Gunter and Shell (1958); (4) Harmon (1962); (5) North Carolina Bureau of Sport Fisheries and Wildlife (1965); (6) O'Heeron (1966); (7) Cain (1972); (8) Hoese (1973)

whereas juveniles may be distributed more uniformly (Fairbanks 1963).

#### Density

The density of clams varies greatly (for reasons discussed later). The highest density of adult clams was

818/m<sup>2</sup> in Lake Maurepas, Louisiana (Tarver and Dugas 1973), and 238/m<sup>2</sup> in Vermilion Bay, Louisiana. Average density of clams from shallow water areas between the Atchafalaya River and Sabine Lake was 11.1/m<sup>2</sup> for adults, 14/m<sup>2</sup> for juvenile clams > 10 mm, and 28/m<sup>2</sup> for juvenile clams < 10 mm (Hoese 1973). Densities as high as



129/m<sup>2</sup> were reported in Texas bays (Odum 1967). A mean density of 250/m<sup>2</sup> was reported in the Nueces River, Texas (Hopkins and Andrews 1970). In Lake Pontchartrain, Louisiana, mean densities ranged from 2.7 to 31/m<sup>2</sup> for large clams and 1807 to 1888/m<sup>2</sup> for juveniles (Fairbanks 1963).

## ENVIRONMENTAL REQUIREMENTS

A combination of low salinity, high turbidity, and a substrate of sand, mud, and vegetation appears to be the most favorable habitat for the common rangia (Tarver 1972). This clam may be one of the few freshwater clams to become established in brackish water (Ladd 1951). Conversely, Remane and Schlieper (1971) considered common rangia as belonging to a marine group that has become adapted to brackish water.

### Temperature

Winter kills in the shallow waters of Chesapeake Bay suggest that common rangia had reached its limit of temperature tolerance there (Gallagher and Wells 1969). Cain (1975) reported that water temperature was the most important factor stimulating gametogenesis. He also stated that the planktonic existence of larvae is greatly extended by low temperature.

### Salinity

Common rangia are concentrated in areas where salinity seldom exceeds 18 ppt (Maury 1920; Pulley 1952; Parker 1956, 1960; Moore 1961; Parker 1966; Odum 1967; Godcharles and Jaap 1973; Hoese 1973; Swingle and Bland 1974). Tarver and Dugas (1973) reported a negative correlation ( $r = 0.71$ ) between density of clams and salinity and a positive correlation ( $r = 0.81$ ) between clam height and salinity (0 to 6 ppt). Godcharles and Jaap (1973) found a

greater number of size classes and larger clams at low salinities (0 to 2 ppt) than at higher ones in Florida and suggested that this range was optimal.

Common rangia have developed physiological responses to the frequent and sudden salinity changes present in many estuaries. Common rangia is an osmoconformer at salinities greater than 10 ppt, and an osmoregulator at lower salinities (Bedford and Anderson 1972a,b; Otto and Pierce 1981a,b). A number of amino acids (including alanine, glycine, glutamic and aspartic) are concentrated at high salinities suggesting that an amino acid pool is used for osmoregulation (Simpson et al. 1959; Allen and Awapara 1960; Allen 1961; Anderson and Bedford 1973; Anderson 1975).

### Temperature and Salinity

Cain (1972, 1973, 1974) tested the combined effects of temperature (8 to 32°C) and salinity (0 to 20 ppt) on embryos and larvae of common rangia. Embryos failed to develop at 0 ppt salinity. The optimum conditions for embryos were temperatures of 18 to 29°C and salinities of 6 to 10 ppt.

Larvae survived at all combinations of temperature and salinity tested (except at 0 ppt). They tolerate temperatures of 8 to 32°C and salinities of 2 to 20 ppt. Growth of larvae was best at high salinity (10 to 20 ppt) and high temperature (20 to 32°C). Straight-hinged larvae were found to be more tolerant than embryos to extremes of temperature and salinity.

### Oxygen

Common rangia can withstand anoxic conditions as reported by Chen and Awapara (1969) in studies of glycolysis; however, rangia are intolerant of exposure to air (Olsen 1976b).

## Substrate

Common rangia are found in a wide range of soft substrates in the northern Gulf of Mexico. Tenore et al. (1968), who studied the effects of clay, silt, and sand substrates on the common rangia, found clay and silt to be unfavorable, whereas Cain (1975) commonly found clams in silty-clay sediments. Parker (1966) found clams on sand, silt, and clay sediments where these constituents did not exceed 80, 30, and 65%, respectively. Few clams were collected from hard sand or clay bottoms in Louisiana (Tarver 1972) or in Alabama (Swingle and Bland 1974). In Louisiana, the numbers of common rangia were highest in a mixture of sand, mud, and vegetation (Tarver 1972), whereas in Alabama, dense populations lived in compacted sandy-clay areas (Swingle and Bland 1974). In Florida, common rangia were collected from soft mud (Godcharles and Jaap 1973; Woodburn 1962), but in Georgia, clams were found in mud or soft mud-sand combinations (Godwin 1968).

The importance of organic matter in the sediment to common rangia is not clear. Fairbanks (1963), who found the largest densities of rangia in highly organic sediments in Lake Pontchartrain, Louisiana, suggested the large amounts of associated bacteria helped to attract and support clams. High organic content in sediments was also favorable for rangia in Vermilion Bay, Louisiana (Gooch 1971). However, no correlation existed between the abundance of common rangia and the percentage of organic matter in the sediment at levels below 10% (Hoese 1973). Few clams were found in sediments with more than 10% organic matter in Louisiana (Hoese 1973) and Alabama (Swingle and Bland 1974). Mortality of rangia can result from shell erosion, which can be accelerated in highly aerated sediments in which carbonic acids are released (Tarver and Dugas 1973).

The substrate of some coastal waters is mainly shells which are often dredged commercially. For example, the common rangia makes up much of the hard substrate of Lake Pontchartrain in Louisiana. The effects of shell dredging on the substrate and benthos are too complex and controversial to discuss in this profile. See Dugas et al. (1974), Taylor (1978), Sikora et al. (1981), and Sikora and Sikora (1982).

## Depth

The highest concentration of clams along the gulf coast has been associated with shallow water areas less than 6 m deep (Tarver 1972; Hoese 1973; Godcharles and Jaap 1973; Tarver and Dugas 1973; Dugas et al. 1974). Tarver and Dugas (1973) observed a general decrease in density as depth increased from 2.5 to 4.6 m.

## Effects of Pollution

Common rangia are known to concentrate chemicals such as kepone. Lunsford (1981) reported that peak kepone levels in common rangia during summer, in the James River Estuary, were related to increased metabolism and feeding rate. The concentration of kepone was 2 to 4 times greater in rangia than in the water column (Lunsford and Blem 1982). The key factors affecting kepone uptake were water temperature, dissolved oxygen concentration, lipid index of clam tissue, turbidity, kepone concentration in the water, and the duration of exposure (Lunsford and Blem 1982). Kepone is adsorbed by particulate matter, which enhances its uptake by filter feeders such as common rangia. Uptake of oil related products such as benzopyrene, naphthalenes, and various aromatic hydrocarbons has also been reported (Cox 1974; Neff et al. 1976). All of these compounds were accumulated primarily in the viscera and fat bodies of clams under direct exposure and most were readily released when clams were

returned to clean water. Low levels of these contaminants, however, were retained by the clams in each case.

The effects of low concentrations of contaminants on common Rangia are not known.



## LITERATURE CITED

- Abbott, R. T. 1954. American sea-shells. Van Nostrand, New York. 541 pp.
- Allen, K. 1961. The effect of salinity on the amino acid concentration in Rangia cuneata (Pelecypoda). Biol. Bull. (Woods Hole) 121:419-424.
- Allen, K., and J. Awapara. 1960. Metabolism of sulfur amino acids in Mytilus edulis and Rangia cuneata. Biol. Bull. (Woods Hole) 118:173-182.
- Anderson, J. W. 1975. The uptake and incorporation of glycine by the gills of Rangia cuneata (Mollusca: Bivalvia) in response to variations in salinity and sodium. Pages 239-258 in F.J. Vernberg, ed. Physiological ecology of estuarine organisms. University of South Carolina Press, Columbia.
- Anderson, J. W., and W. B. Bedford. 1973. The physiological responses of the estuarine clam, Rangia cuneata (Gray), to salinity. II. Uptake of glycine. Biol. Bull. (Woods Hole) 144:229-247.
- Andrews, J. 1971. Sea shells of the Texas coast. University of Texas Press, Austin. 298 pp.
- Andrews, J. 1981. Texas shells: a field guide. University of Texas Press, Austin. 175 pp.
- Arndt, R. H. 1976. The shell dredging industry of the gulf coast region. Pages 13-48 in A. Bouma, ed. Shell dredging and its influence on gulf coast environments. Gulf Publishing Co., Houston, Tex.
- Bedford, W. B., and J. W. Anderson. 1972a. The physiological response of the estuarine clam, Rangia cuneata (Gray). I. Osmoregulation. Physiol. Zool. 45:255-260.
- Bedford, W. B., and J. W. Anderson. 1972b. Adaptive mechanisms of the estuarine bivalve, Rangia cuneata, to a salinity stressed environment. Am. Zool. 12:721. (Abstr.)
- Bedinger, C. A., Jr. 1974. Seasonal changes in condition and biochemical constituents of the brackish water clam Rangia cuneata (Gray), 1831. Ph.D. Dissertation. Texas A&M University, College Station. 179 pp.
- Beyers, R. J., and R. W. Warwick. 1968. The production of carbon dioxide by Rangia cuneata. Contrib. Mar. Sci. 13:45-50.
- Cain, T. D. 1972. The reproductive cycle and larval tolerances of Rangia cuneata in the James River, Virginia. Ph.D. Dissertation. University of Virginia, Charlottesville. 250 pp.
- Cain, T. D. 1973. The combined effects of temperature and salinity on embryos and larvae of the clam Rangia cuneata. Mar. Biol. 21:1-6.
- Cain, T. D. 1974. Combined effects of changes in temperature and

- salinity on early stages of Rangia cuneata. Va. J. Sci. 25:30-31.
- Cain, T. D. 1975. Reproduction and recruitment of the brackish water clam Rangia cuneata in the James River, Virginia. U.S. Natl. Mar. Fish. Serv. Fish. Bull. 73:412-430.
- Chanley, P. 1965. Larval development of the brackish water macrid clam, Rangia cuneata. Chesapeake Sci. 6:209-213.
- Chen, C., and J. Awapara. 1969. Effects of oxygen on the end-products of glycolysis in Rangia cuneata. Comp. Biochem. Physiol. 31:395-401.
- Christmas, J. Y. 1973. Cooperative Gulf of Mexico estuarine inventory and study. Mississippi Gulf Coast Res. Lab., Ocean Springs.
- Conrad, T. A. 1840. On the Silurian system, with a table of the strata and characteristic fossils: observations on the genus Gnathodon with description of a new species. Am. J. Sci. 38:92-93.
- Copeland, B. J., K. R. Tenore, and D. B. Horton. 1974. Oligohaline regime. Pages 315-35 in H. T. Odum, B. J. Copeland, and E. A. McMahan, eds. Coastal ecological systems of the U.S., Vol. 2. The Conservation Foundation, Washington, D.C.
- Cox, B. A. 1974. Responses of the marine crustaceans Mysidopsis almyra Bowman, Penaeus aztecus Ives, and Penaeus setiferus (Linn.) to petroleum hydrocarbons. Ph.D. Dissertation. Texas A&M University, College Station. 182 pp.
- Dall, W. H. 1894. Monograph of the genus Gnathodon Gray (Rangia Desmoulins). Proc. U.S. Natl. Mus. 17:89-106.
- Darnell, R. M. 1958. Food habits of fishes and larger invertebrates of Lake Pontchartrain, Louisiana, an estuarine community. Publ. Inst. Mar. Sci. Univ. Tex. 5:353-416.
- Darnell, R. M. 1961. Trophic spectrum of an estuarine community based on studies of Lake Pontchartrain, Louisiana. Ecology 42:553-568.
- Dugas, R. J., J. W. Tarver, and L. S. Nutwell. 1974. The mollusk communities of Lakes Pontchartrain and Maurepas, Louisiana. La. Wildl. Fish. Comm. Tech. Bull. No. 10. 13 pp.
- Fairbanks, L. D. 1963. Biodemographic studies of the clam Rangia cuneata Gray. Tulane Stud. Zool. 10:3-47.
- Fotheringham, N., and S. Brunenmeister. 1975. Common marine invertebrates of the northwest gulf coast. Gulf Publishing Co., Houston, Tex.
- Gallagher, J. L., and H. W. Wells. 1969. Northern range extension and winter mortality of Rangia cuneata. Nautilus 83:22-25.
- Godcharles, M. F., and W. C. Jaap. 1973. Exploratory clam survey of Florida nearshore and estuarine waters with commercial hydraulic dredging gear. Fla. Dep. Nat. Resour. Mar. Res. Lab. Prof. Pap. Ser. No. 21. 77 pp.
- Godwin, W.F. 1968. The distribution and density of the brackish water clam, Rangia cuneata in the Altamaha River, Georgia. Ga. Fish Game Comm., Mar. Fish. Div. Contrib. Ser. No. 5:1-10.
- Gooch, D. M. 1971. A study of Rangia cuneata Gray, in Vermilion Bay, Louisiana. M.S. Thesis. University of Southwestern Louisiana, Lafayette. 48 pp.
- Gunter, G., and W. E. Shell, Jr. 1958. A study of an estuarine area with

- water-level control in the Louisiana marsh. Proc. La. Acad. Sci. 21:5-34.
- Harmon, B. G. 1962. Mollusk as food of lesser scaup along the Louisiana coast. Trans. N. Am. Wildl. Conf. 27:132-138.
- Hoese, H. D. 1973. Abundance of the low salinity clam, Rangia cuneata in southwestern Louisiana. Proc. Natl. Shellfish. Assoc. 63:99-106.
- Hopkins, S. H. 1970. Studies on the brackish water clams of the genus Rangia in Texas. Proc. Natl. Shellfish. Assoc. 60:5-6. (Abstr.)
- Hopkins, S. H., and J. D. Andrews. 1970. Rangia cuneata on the east coast: thousand mile range extension or resurgence? Science 167:868-869.
- Hopkins, S. H., J. W. Anderson, and K. Horvath. 1973. The brackish water clam Rangia cuneata as indicator of ecological effects of salinity changes in coastal waters. U.S. Army Engineer Waterways Exp. Stn., Vicksburg, Miss. Contract Rep. No. DACW39-71-C-0007.
- Ladd, H. S. 1951. Brackish-water and marine assemblages of the Texas coast with special reference to mollusks. Publ. Inst. Mar. Sci. Univ. Texas. 2:12-164.
- Louisiana Wildlife and Fisheries Commission. 1968. The history and regulation of the shell dredging industry in Louisiana. La. Wildl. Fish Comm. 32 pp.
- Lunsford, C. A. 1981. Kepone distribution in the water column of the James River Estuary - 1976-78. Pestic. Monit. J. 14:119-124.
- Lunsford, C.A., and C. R. Blem. 1982. Annual cycle of Kepone residue and lipid content of the estuarine clam, Rangia cuneata. Estuaries 5:121-130.
- Maury, C. J. 1920. Recent mollusks of the Gulf of Mexico and Pleistocene and Pliocene species from the Gulf States. Bull. Am. Paleontol. 8:1-115.
- McIntire, W. G. 1958. Prehistoric Indian settlements of the changing Mississippi River Delta. La. State Univ. Coastal Stud. Ser. 1:1-128.
- Moore, D. R. 1961. The marine and brackish water mollusca of the state of Mississippi. Gulf Res. Rep. 1:1-58.
- Neff, J. M., B. A. Cox, D. Dixit, and J. W. Anderson. 1976. Accumulation and release of petroleum derived aromatic hydrocarbons by four species of marine animals. Mar. Biol. 38:279-298.
- North Carolina Bureau of Sport Fisheries and Wildlife, North Carolina Wildlife Resources Commission, and Virginia Commission of Game and Inland Fisheries. 1965. Back Bay-Currituck Sound data report. Vol. 1. 84 pp.
- Odum, H. T. 1967. Biological circuits and the marine systems of Texas. Pages 99-157 in T. A. Olsen and F. J. Burgess, eds. Pollution and marine ecology. John Wiley and Sons, New York.
- Odum, H. T., and B. J. Copeland. 1969. A functional classification of the coastal ecological systems. Pages 9-86 in H. T. Odum, B. J. Copeland, and E. A. McMahan, eds. Coastal ecological systems of the

- U.S. Rep. Fed. Water Pollut. Control Admin., Washington, D.C.
- O'Heeron, M. K. 1966. Some aspects of the ecology of Rangia cuneata (Gray). M.S. Thesis. Texas A&M University, College Station. 71 pp.
- Olsen, L. A. 1972. Comparative functional morphology of feeding mechanisms in Rangia cuneata (Gray) and Polymesoda caroliniana (Bosc). Proc. Natl. Shellfish. Assoc. 63:4. (Abstr.)
- Olsen, L. A. 1973. Food and feeding in relation to the ecology of two estuarine clams, Rangia cuneata (Gray) and Polymesoda caroliniana (Bosc). M.S. Thesis. Florida State University, Tallahassee. 102 pp.
- Olsen, L. A. 1976a. Ingested material in two species of estuarine bivalves: Rangia cuneata (Gray) and Polymesoda caroliniana (Bosc). Proc. Natl. Shellfish. Assoc. 66:103-104. (Abstr.)
- Olsen, L. A. 1976b. Reproductive cycles of Polymesoda caroliniana (Bosc) and Rangia cuneata (Gray) with aspects of desiccation in the adults and fertilization and early larval stages in Polymesoda caroliniana. Ph.D. Dissertation. Florida State University, Tallahassee. 116 pp.
- Otto, J., and S. K. Pierce. 1981a. Water balance systems of Rangia cuneata: ionic and amino acid regulation in changing salinities. Mar. Biol. 61:185-192.
- Otto, J., and S. K. Pierce. 1981b. An interaction of extra- and intracellular osmoregulatory mechanisms in the bivalve mollusc Rangia cuneata. Mar. Biol. 61:192-198.
- Parker, J. C. 1966. Bottom fauna study -- distribution and relative abundance of Rangia cuneata. U.S. Fish Wildl. Serv. Bur. Commer. Fish. Circ. 246:35-36.
- Parker, R. H. 1955. Changes in the invertebrate fauna, apparently attributable to salinity changes, in the bays of central Texas. J. Paleontol. 29:193-211.
- Parker, R. H. 1956. Macro-invertebrate assemblages as indicators of sedimentary environments in east Mississippi delta region. Am. Assoc. Petrol. Geol. Bull. 40:295-376.
- Parker, R. H. 1959. Macro-invertebrate assemblages of central Texas coastal bays and Laguna Madre. Am. Assoc. Petrol. Geol. Bull. 43:2100-2166.
- Parker, R. H. 1960. Ecology and distributional patterns of marine macro-invertebrates, northern Gulf of Mexico. Pages 302-337 in F. P. Shepard, ed. Recent sediments of northwest Gulf of Mexico. Am. Assoc. Petrol. Geol. Bull. Tulsa, Okla.
- Pfitzenmeyer, H. T., and K. G. Drobeck. 1964. The occurrence of the brackish water clam, Rangia cuneata, in the Potomac River, Maryland. Chesapeake Sci. 5:209-215.
- Pulley, T. E. 1952. An illustrated check list of marine mollusks of Texas. Tex. J. Sci. 4:167-199.
- Remane, A., and C. Schlieper. 1971. Biology of brackish water. John Wiley and Sons, New York. 372 pp.
- Richards, H. G. 1939. Marine Pleistocene of the gulf coastal plain: Alabama, Mississippi and Louisiana. Am. Assoc. Petrol. Geol. Bull. 50:297-316.
- Rogers, P., and A. Garcia-Cubas. 1981. Evolution gonadica a nivel



- histologico de Rangia cuneata (Gray, 1831) de la Laguna Pon, Campeche, Mexico (Mollusca: Bivalvia). Am. Inst. Cienc. del Mar. Limnol., Univ. Nat. Auton, Mexico. 8:1-20.
- Ruiz, H. E. 1975. Estudio ecologico preliminar de las almejas comerciales del sistema lagunar de Terminos, Campeche, Rangia cuneata (Gray, 1831). Tesis profesional, Univ. Nat. Auton, Mexico, 80 pp. (cited in Rogers and Garcia-Cubas 1981).
- Sikora, W. B., J. P. Sikora, and A. McK. Prior. 1981. Environmental effects of hydraulic dredging for clam shells in Lake Pontchartrain, Louisiana. Publ. No. LSU-CEL-81-18. U.S. Army Corps of Engineers, New Orleans District. Contract Rep. No. DACW29-79-C-0099. 140 pp.
- Sikora, W. B., and J. P. Sikora. 1982. Ecological characterization of the benthic community of Lake Pontchartrain, Louisiana. Publ. No. LSU-CEL-82-05. U.S. Army Corps of Engineers, New Orleans District. Contract Rep. No. DACW29-79-C-0099. 214 pp.
- Simpson, J. W., K. Allen, and J. Awapara. 1959. Free amino acids in some aquatic invertebrates. Biol. Bull. (Woods Hole) 117:-371-381.
- Singley, J. A. 1893. Contributions to the natural history of Texas. Part I. Texas mollusca. Annu. Rep. Geol. Sur. Tex. 4:297-343.
- Suttkus, R. D., R. M. Darnell, and J. H. Darnell. 1954. Biological study of Lake Pontchartrain. (annual report 1953-54). Tulane University, New Orleans, La. 59 pp.
- Swingle, H. A., and D. G. Bland. 1974. Distribution of the estuarine clam Rangia cuneata Gray in coastal waters of Alabama. Ala. Mar. Resour. Bull. 10:9-16.
- Tarver, J. W. 1972. Occurrence, distribution and density of Rangia cuneata in Lakes Pontchartrain and Maurepas, Louisiana. La. Wildl. Fish. Comm. Tech. Bull. No. 1. 8 pp.
- Tarver, J. W., and R. J. Dugas. 1973. A study of the clam Rangia cuneata, in Lake Pontchartrain and Lake Maurepas, Louisiana. La. Wildl. Fish. Comm. Tech. Bull. No. 5. 97 pp.
- Taylor, J. L. 1978. Evaluation of dredging and open water disposal on benthic environments: Gulf Intracoastal Waterway -- Apalachicola Bay, Florida to Lake Borgne, Louisiana. Contract Report to U.S. Army Corps of Engineers, Mobile District, Mobile, Ala. 51 pp.
- Tenore, K. R., D. B. Horton, and T. W. Duke. 1968. Effects of bottom substrate on the brackish water bivalve Rangia cuneata. Chesapeake Sci. 9:238-248.
- U.S. Department of Commerce. 1971. Fishery statistics of the United States 1968. U.S. Gov. Print. Off., Washington, D.C. Dig. 62. 189 pp.
- Wass, M., and D. Haven. 1970. Marsh clams believed potential food supply. Bull. Va. Inst. Mar. Sci. 2:1.
- Wells, H. W. 1961. The fauna of oyster beds, with special reference to the salinity factor. Ecol. Monogr. 31:239-266.
- Wolfe, D. A., and E. N. Petteway. 1968. Growth of Rangia cuneata Gray. Chesapeake Sci. 9:99-102.

Woodburn, K. D. 1962. Clams and  
oysters in Charlotte County and

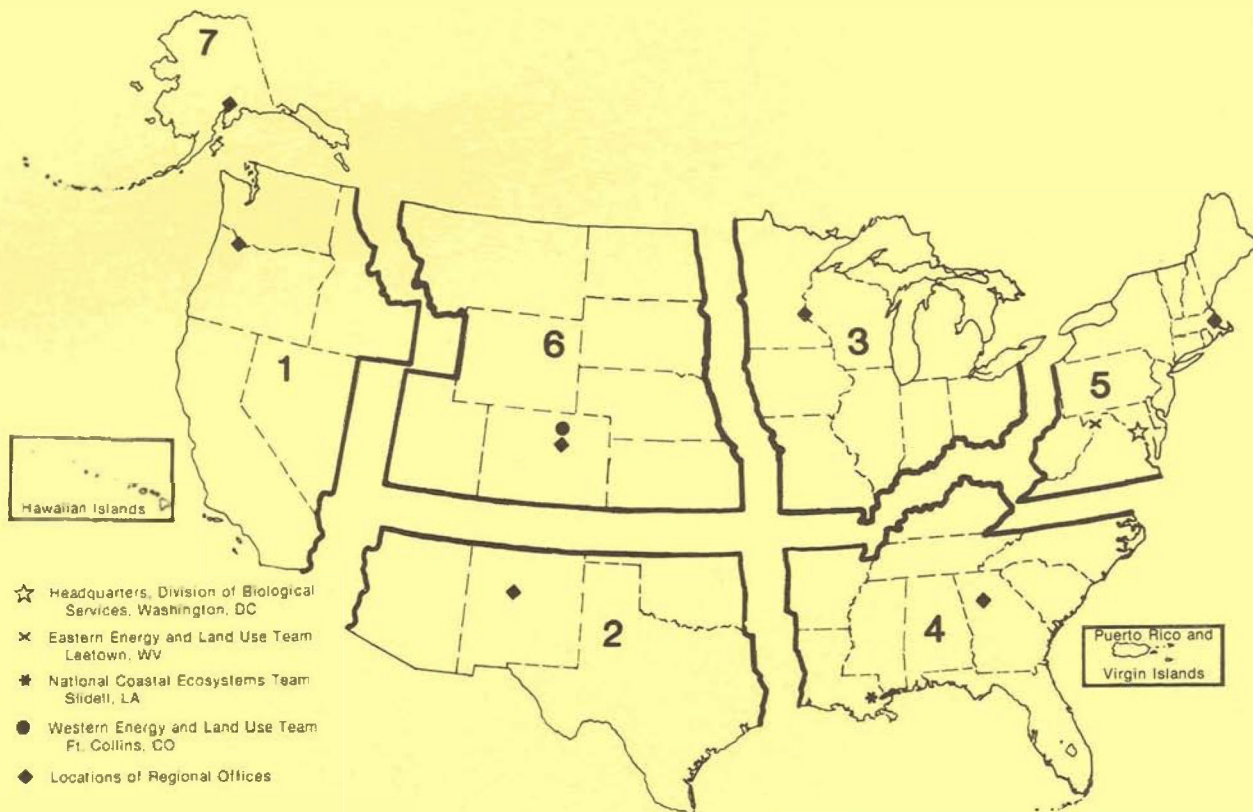
vicinity. Fla. Board Conserv.  
Mar. Lab. (FBCML) No. 62. 29 pp.

<b>REPORT DOCUMENTATION PAGE</b>	<b>1. REPORT NO.</b> Biological Report 82(11.31)*	<b>2.</b>	<b>3. Recipient's Accession No.</b>
<b>4. Title and Subtitle</b> Species Profiles: Life Histories and Environmental Requirements of Coastal Fishes and Invertebrates (Gulf of Mexico) -- Common Rangia			<b>5. Report Date</b> April 1985
<b>7. Author(s)</b> Mark W. LaSalle and Armando A. de la Cruz			<b>6.</b>
<b>9. Performing Organization Name and Address</b> Department of Biological Sciences P.O. Drawer GY Mississippi State University Mississippi State, MS 39762			<b>8. Performing Organization Rept. No.</b>
<b>12. Sponsoring Organization Name and Address</b> National Coastal Ecosystems Team Fish and Wildlife Service U.S. Department of the Interior Washington, DC 20240	U.S. Army Corps of Engineers Waterways Experiment Station P.O. Box 631 Vicksburg, MS 39180		<b>10. Project/Task/Work Unit No.</b>
			<b>11. Contract(C) or Grant(G) No.</b> (C) (G)
			<b>13. Type of Report &amp; Period Covered</b>
			<b>14.</b>
<b>15. Supplementary Notes</b> *U.S. Army Corps of Engineers Report No. TR EL-82-4			
<b>16. Abstract (Limit: 200 words)</b> <p>Species profiles are literature summaries of the taxonomy, morphology, range, life history, and environmental requirements of coastal aquatic species. They are designed to assist in environmental impact assessment. The common rangia (<i>Rangia cuneata</i>) is a common inhabitant of shallow, low salinity (zero to 18 ppt) estuaries along the northern Gulf of Mexico. The population density of rangia may exceed 1000 clams/m<sup>2</sup>. Rangia spawn between March and November, following a sudden rise or fall of salinity of 5 to 10 ppt. Juvenile clams develop rapidly, settling after about 7 days. Juveniles tolerate salinity and temperature extremes of 2 to 20 ppt and 8 to 32 °C. The growth rate of clams ranges from zero to 20 mm per year depending on conditions. Clams may live 15 years or more, attaining a maximum length of about 94 mm. Rangia are found in a wide range of substrate from sand to soft mud. Rangia are filter feeders, ingesting large amounts of detritus and phytoplankton, and are the prey of a large number of fish, crustaceans, mollusks, and ducks. Deposits of fossil shell material are dredged for a number of industrial purposes.</p>			
<b>17. Document Analysis e. Descriptors</b>  Estuaries Clams Dredging  <b>b. Identifiers/Open-Ended Terms</b> Common rangia                      Life history Rangia cuneata                      Trophic ecology Salinity requirements              Population density Spawning habits  <b>c. COSATI Field/Group</b>			
<b>18. Availability Statement</b> Unlimited	<b>19. Security Class (This Report)</b> Unclassified	<b>21. No. of Pages</b> 16	
	<b>20. Security Class (This Page)</b> Unclassified	<b>22. Price</b>	









**REGION 1**

Regional Director  
 U.S. Fish and Wildlife Service  
 Lloyd Five Hundred Building, Suite 1692  
 500 N.E. Multnomah Street  
 Portland, Oregon 97232

**REGION 2**

Regional Director  
 U.S. Fish and Wildlife Service  
 P.O. Box 1306  
 Albuquerque, New Mexico 87103

**REGION 3**

Regional Director  
 U.S. Fish and Wildlife Service  
 Federal Building, Fort Snelling  
 Twin Cities, Minnesota 55111

**REGION 4**

Regional Director  
 U.S. Fish and Wildlife Service  
 Richard B. Russell Building  
 75 Spring Street, S.W.  
 Atlanta, Georgia 30303

**REGION 5**

Regional Director  
 U.S. Fish and Wildlife Service  
 One Gateway Center  
 Newton Corner, Massachusetts 02158

**REGION 6**

Regional Director  
 U.S. Fish and Wildlife Service  
 P.O. Box 25486  
 Denver Federal Center  
 Denver, Colorado 80225

**REGION 7**

Regional Director  
 U.S. Fish and Wildlife Service  
 1011 E. Tudor Road  
 Anchorage, Alaska 99503



**DEPARTMENT OF THE INTERIOR**  
**U.S. FISH AND WILDLIFE SERVICE**



As the Nation's principal conservation agency, the Department of the Interior has responsibility for most of our nationally owned public lands and natural resources. This includes fostering the wisest use of our land and water resources, protecting our fish and wildlife, preserving the environmental and cultural values of our national parks and historical places, and providing for the enjoyment of life through outdoor recreation. The Department assesses our energy and mineral resources and works to assure that their development is in the best interests of all our people. The Department also has a major responsibility for American Indian reservation communities and for people who live in island territories under U.S. administration.