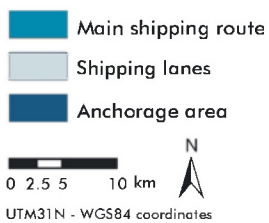


Map I.3.3a. Shipping and anchorage: spatial distribution



Original data source: International Maritime Organization, Ships' Routing, London, IMO, 6th Edition, 2003  
IVS-SRK (Ministry of the Flemish Community & Dutch Ministry of Transport, Public Works and Water Management)  
Transeuropa Ferries, Ferryways  
Map preparation: RCMG - Ghent University

May 2005

