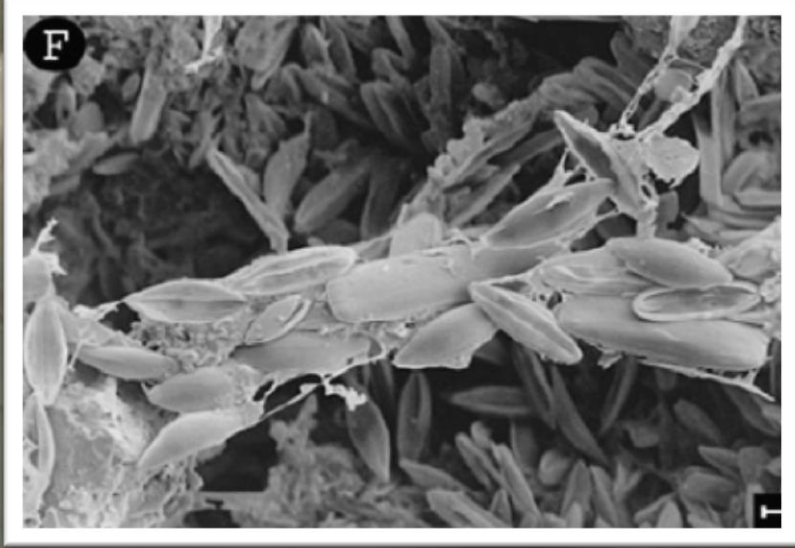
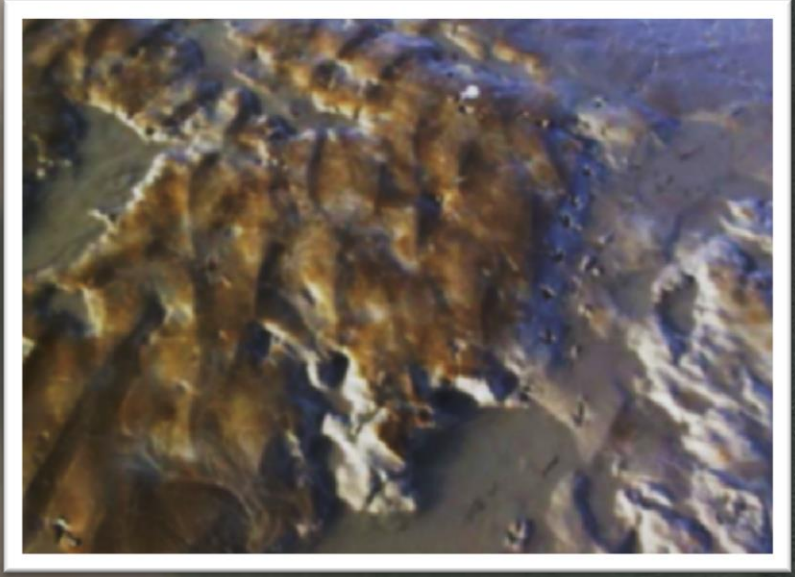


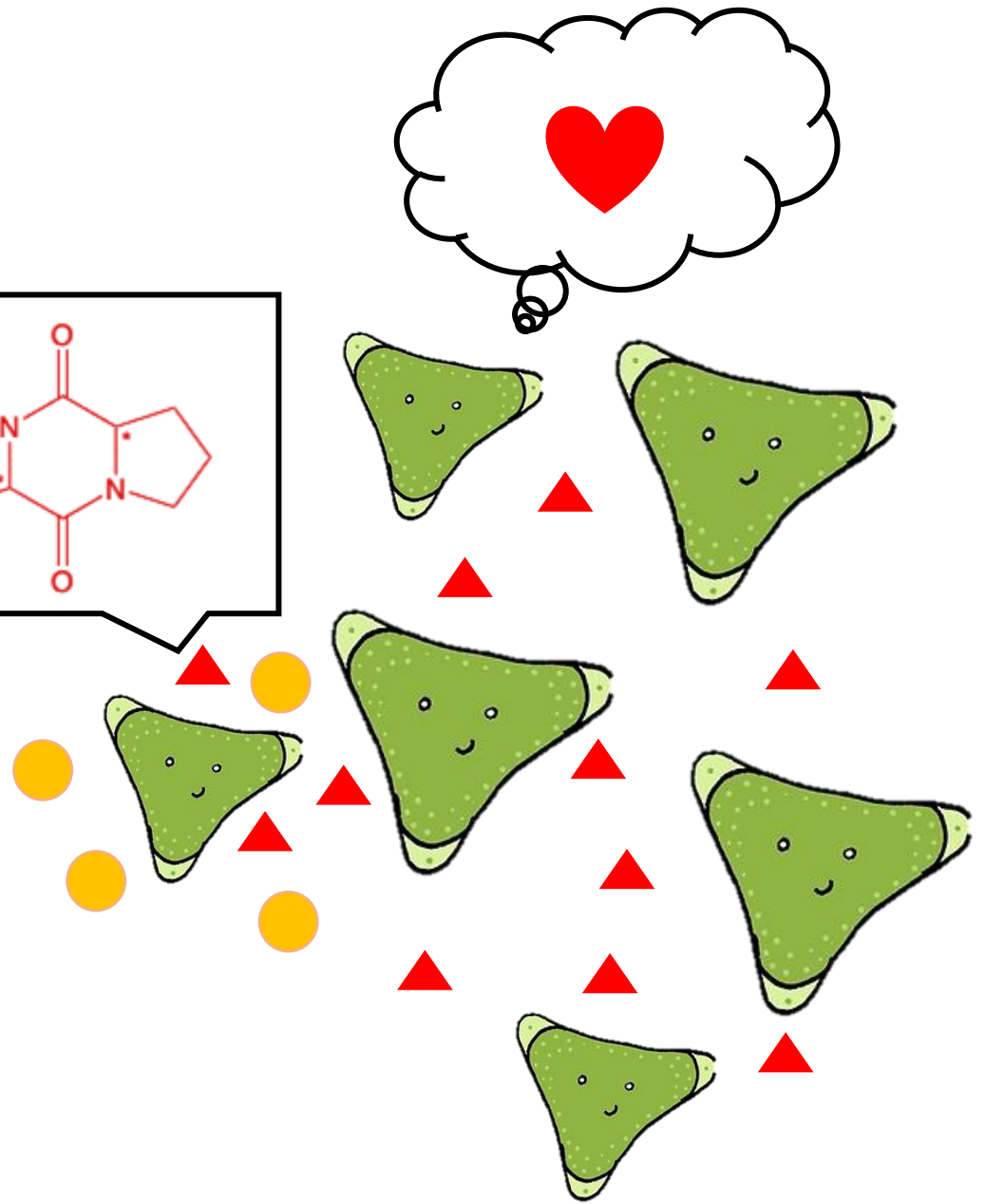
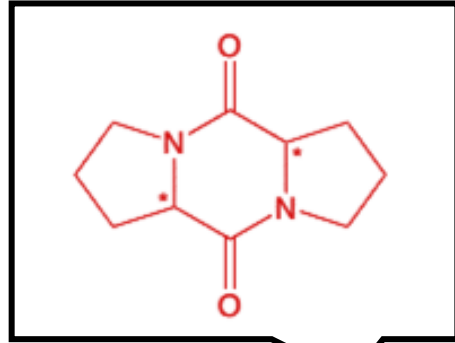
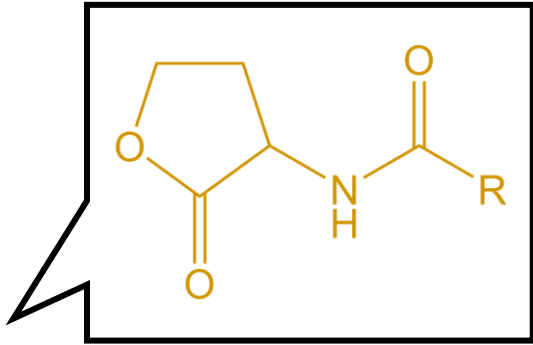
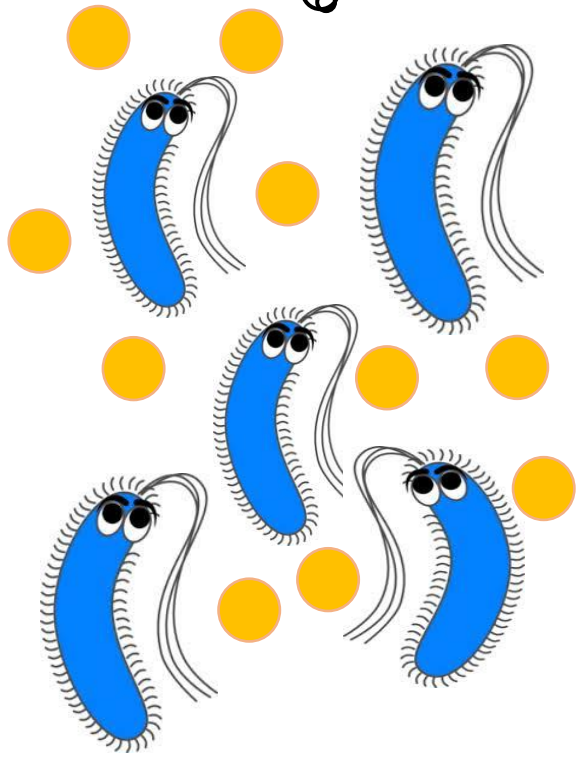
An aerial photograph of a river delta system. A large, irregularly shaped reservoir or lake is situated in the upper right portion of the image. The river channels are visible as a network of light-colored lines branching out from the reservoir and flowing towards the bottom left. The surrounding land is a mix of green and brown, indicating different types of vegetation and possibly agricultural fields. The overall scene is captured from a high angle, providing a clear view of the river's path and the reservoir's shape.

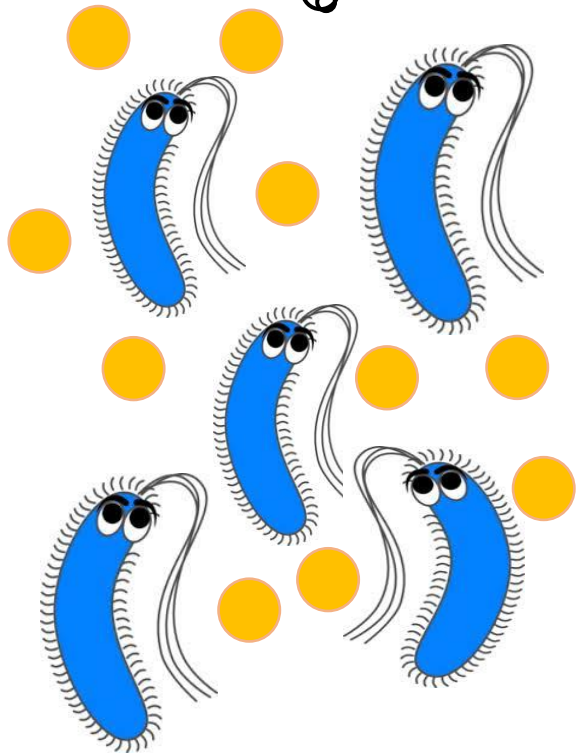
Hello from the other side

Interkingdom Crosstalk between diatoms and bacteria



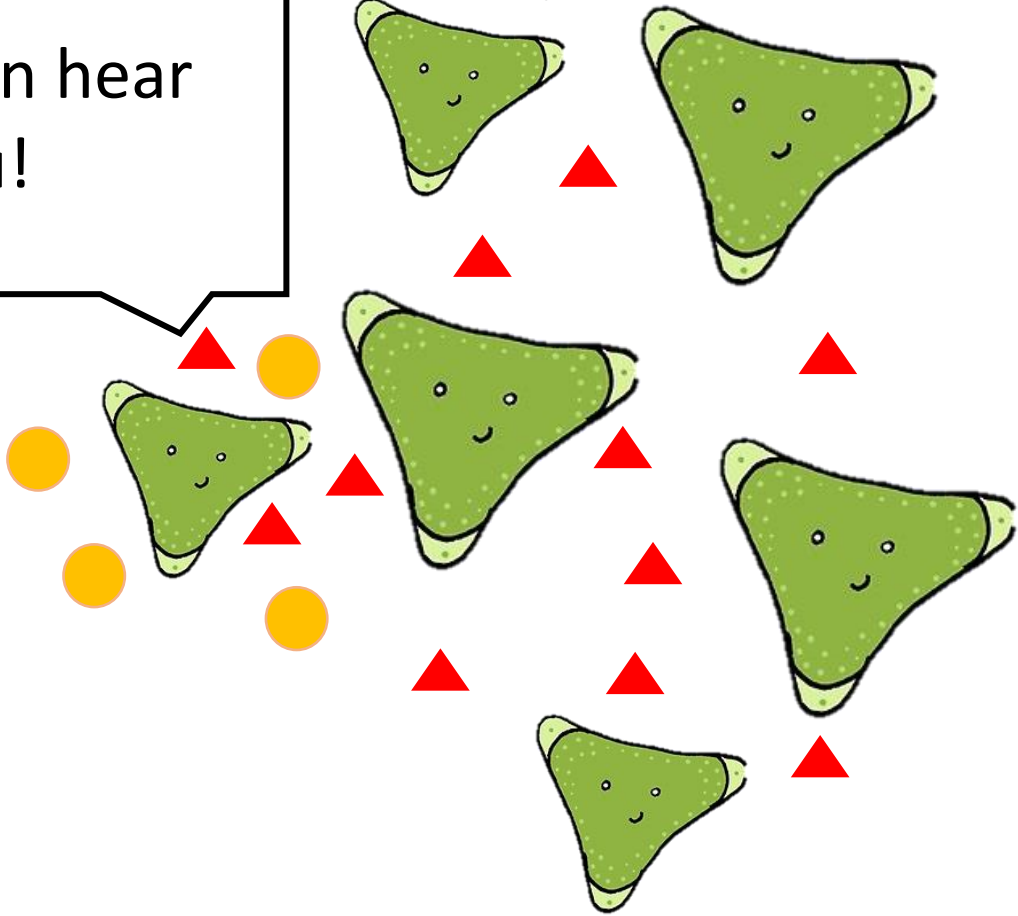
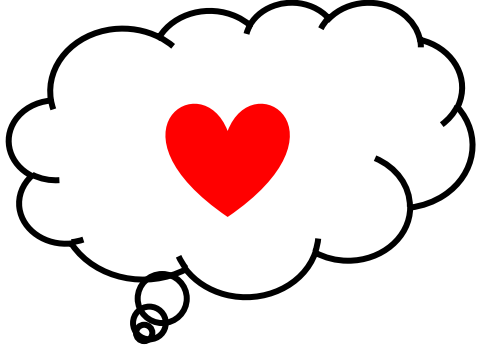
ATTACK!
ATTACK!



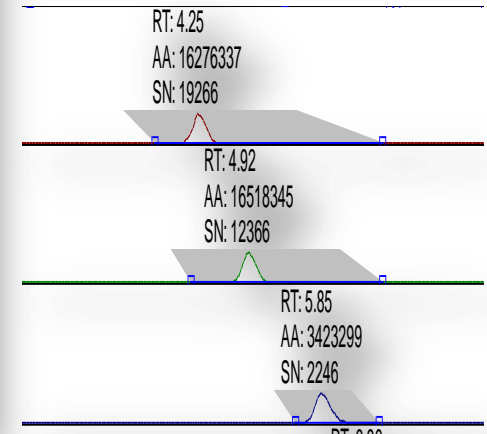
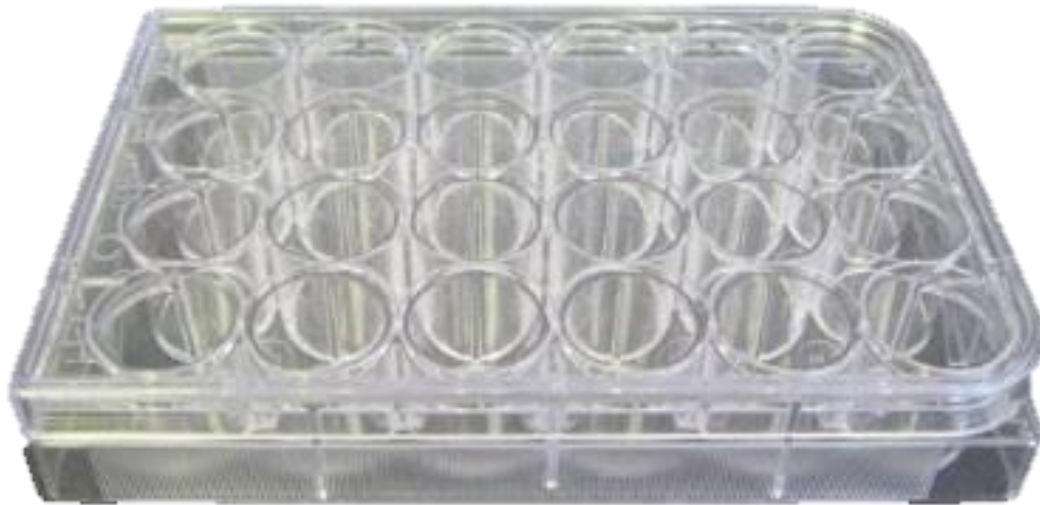
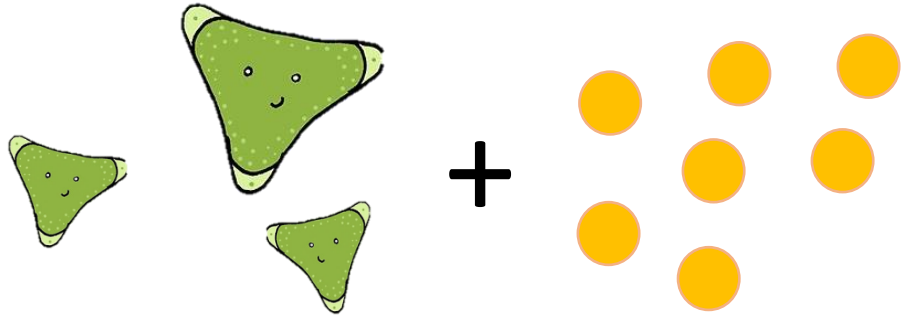


Hey guys,
attack in 3,
2, 1,...

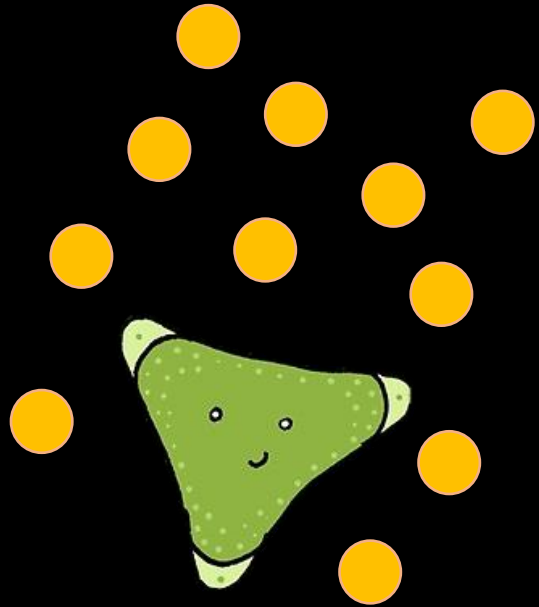
I can hear
you!



Approach



25 min Time laps video



Thank you!

- Promotors and Collaborators:

- Wim Vyverman
- Sven Mangelinckx
- Anne Willems
- Lynn Vanhaecke



- Project is part of the Marie Curie ITN
„The Algal Microbiome: Friends or Foes“ (ALFF)

- For more information contact Frederike.stock@Ugent.be

