



# Fatty Acid and Hopanoid Adaption to Cold in the Methanotroph *Methylovulum psychrotolerans*

Nicole J. Bale<sup>1\*</sup>, W. Irene C. Rijpstra<sup>1</sup>, Diana X. Sahonero-Canavesi<sup>1</sup>, Igor Y. Oshkin<sup>2</sup>, Svetlana E. Belova<sup>2</sup>, Svetlana N. Dedys<sup>2</sup> and Jaap S. Sinninghe Damsté<sup>1,3</sup>

<sup>1</sup> Department of Marine Microbiology and Biogeochemistry, NIOZ Royal Institute for Sea Research, and Utrecht University, Texel, Netherlands, <sup>2</sup> Research Center of Biotechnology of the Russian Academy of Sciences, Winogradsky Institute of Microbiology, Moscow, Russia, <sup>3</sup> Department of Earth Sciences, Faculty of Geosciences, Utrecht University, Utrecht, Netherlands

## OPEN ACCESS

### Edited by:

Marcelino T. Suzuki,  
Sorbonne Universités, France

### Reviewed by:

Calvin A. Henard,  
National Renewable Energy  
Laboratory (DOE), United States  
Jenan Kharbush,  
Harvard University, United States

### \*Correspondence:

Nicole J. Bale  
nicole.bale@nioz.nl

### Specialty section:

This article was submitted to  
Aquatic Microbiology,  
a section of the journal  
Frontiers in Microbiology

**Received:** 12 October 2018

**Accepted:** 07 March 2019

**Published:** 05 April 2019

### Citation:

Bale NJ, Rijpstra WIC, Sahonero-Canavesi DX, Oshkin IY, Belova SE, Dedys SN and Sinninghe Damsté JS (2019) Fatty Acid and Hopanoid Adaption to Cold in the Methanotroph *Methylovulum psychrotolerans*. *Front. Microbiol.* 10:589. doi: 10.3389/fmicb.2019.00589

Three strains of aerobic psychrotolerant methanotrophic bacteria *Methylovulum psychrotolerans*, isolated from geographically remote low-temperature environments in Northern Russia, were grown at three different growth temperatures, 20, 10 and 4°C and were found to be capable of oxidizing methane at all temperatures. The three *M. psychrotolerans* strains adapted their membranes to decreasing growth temperature by increasing the percent of unsaturated fatty acid (FAs), both for the bulk and intact polar lipid (IPL)-bound FAs. Furthermore, the ratio of  $\beta$ OH-C<sub>16:0</sub> to *n*-C<sub>16:0</sub> increased as growth temperature decreased. The IPL head group composition did not change as an adaption to temperature. The most notable hopanoid temperature adaptation of *M. psychrotolerans* was an increase in unsaturated hopanols with decreasing temperature. As the growth temperature decreased from 20 to 4°C, the percent of unsaturated *M. psychrotolerans* bulk-FAs increased from 79 to 89 % while the total percent of unsaturated hopanoids increased from 27 to 49 %. While increased FA unsaturation in response to decreased temperature is a commonly observed response in order to maintain the liquid-crystalline character of bacterial membranes, hopanoid unsaturation upon cold exposition has not previously been described. In order to investigate the mechanisms of both FA and hopanoid cold-adaption in *M. psychrotolerans* we identified genes in the genome of *M. psychrotolerans* that potentially code for FA and hopanoid desaturases. The unsaturation of hopanoids represents a novel membrane adaption to maintain homeostasis upon cold adaptation.

**Keywords:** methanotroph, bacteria, methane, temperature, fatty acid, hopanol

## INTRODUCTION

*Methylovulum psychrotolerans* is a recently described species of aerobic methanotrophic bacteria, isolated from several low-temperature habitats in Northern Russia, such as cold methane seeps and subarctic freshwater lake sediments (Oshkin et al., 2016). These psychrotolerant methanotrophs are able to grow at temperatures between 2°C and 36°C and, although their optimum temperature range is 20–25°C, they also grow well at lower temperatures, down to 4°C. Members of the genus *Methylovulum* are characterized as Type I methanotrophs, as they belong to the

*Gammaproteobacteria* and assimilate C1 compounds via the ribulose monophosphate pathway (RuMP) (Hanson and Hanson, 1996; Trotsenko and Murrell, 2008). The lipid characteristics of Type I methanotrophs include high levels of *n*-C<sub>16</sub> fatty acids (C<sub>16</sub> FAs), and in particular, unsaturated *n*-C<sub>16</sub> FAs (Hanson and Hanson, 1996; Nichols et al., 1985). However, species from the genera *Methylovulum* have been reported to also contain high levels of saturated *n*-C<sub>16</sub> FA and *n*-C<sub>14</sub> FA (Iguchi et al., 2011; Oshkin et al., 2016).  $\beta$ -hydroxy FAs have been detected in a range of methanotrophic bacteria (Bowman et al., 1991) and their source has been identified as the lipid A component of lipopolysaccharides (Wollenweber and Rietschel, 1990), which are a major constituent of the outer membrane of Gram-negative bacteria (Keinänen et al., 2003; Wollenweber and Rietschel, 1990). Methanotrophs also produce bacteriohopanepolyols (BHPs) which can be tetra, penta or hexafunctionalised (Cvejic et al., 2000a; van Winden et al., 2012b; Rush et al., 2016; Osborne et al., 2017). BHPs have been identified with a range of modifications including 3 $\beta$ -methylation and unsaturations at the  $\Delta^6$  and  $\Delta^{11}$  positions (Talbot et al., 2007a). BHPs (and hopanoid alcohols derived thereof) with an unsaturation at the  $\Delta^{11}$  position have been observed in a *Methylovulum*-like strain M200 (van Winden et al., 2012b), and have been observed in combination with a 3 $\beta$  methylation in the thermophilic *Methylocaldum szegediense* (Cvejic et al., 2000a) and in a range of acetic acid bacteria (Rohmer and Ourisson, 1976; Simonin et al., 1994; Herrmann et al., 1996).

The effect of temperature on bacterial membrane lipids has been extensively studied (Suutari and Laakso, 1994; Chintalapati et al., 2004; Barria et al., 2013). Indeed, in order to maintain sufficient membrane fluidity at low temperatures, bacteria adapt their membranes to lower the phase-transition temperature below which their membrane changes from a “fluid” (liquid-crystalline) to a “rigid” phase (Chattopadhyay, 2006; Guschina and Harwood, 2006; Shivaji and Prakash, 2010; Siliakus et al., 2017). These membrane adaptations to cold include increases in unsaturated FAs, short chain FAs and branched chain FAs as well as the incorporation of carotenoids and glycolipids. Several studies have described the membrane lipid composition and adaptation to cold in psychrophilic bacteria (which have an optimum growth temperature of < 15°C) including *Clostridium psychrophilum*, *Colwellia psychrerythraea* and *Psychromonas ingrahamii* (Breezee et al., 2004; Auman et al., 2006; Guan et al., 2013; Wan et al., 2016). Membrane adaptation to cold in psychrotolerant bacteria (which have an optimum temperature between 20 and 40°C, but are also capable of growth around 0°C) has been studied for species including *Sphingobacterium antarcticus* and *Micrococcus roseus* (Chattopadhyay et al., 1997; Jagannadham et al., 2000). A range of species-specific adaptations were described for these psychrotolerant microorganisms including increases in unsaturated FAs, both increases and decreases in branched chain FAs and incorporation of polar and non-polar carotenoids into the membrane.

Changes in hopanoids with changing growth temperature has been reported for non-methanotrophs, such as *Frateria*

*aurantia* (Joyeux et al., 2004), *Zymomonas mobilis* (Hermans et al., 1991) and *Bacillus acidocaldarius* (Poralla et al., 1984). However, only a limited number of studies have examined the effect of temperature on the lipid composition of methanotrophic bacteria: a study of “CEL 1923” [thought to be *Methylomonas methanica*; Jahnke et al. (1999)], a mesocosm experiment with *Sphagnum* moss colonized by symbiotic methanotrophs (van Winden, 2011; van Winden et al., 2012a) and a study of methane-amended aerobic river-sediment incubations (Osborne et al., 2017).

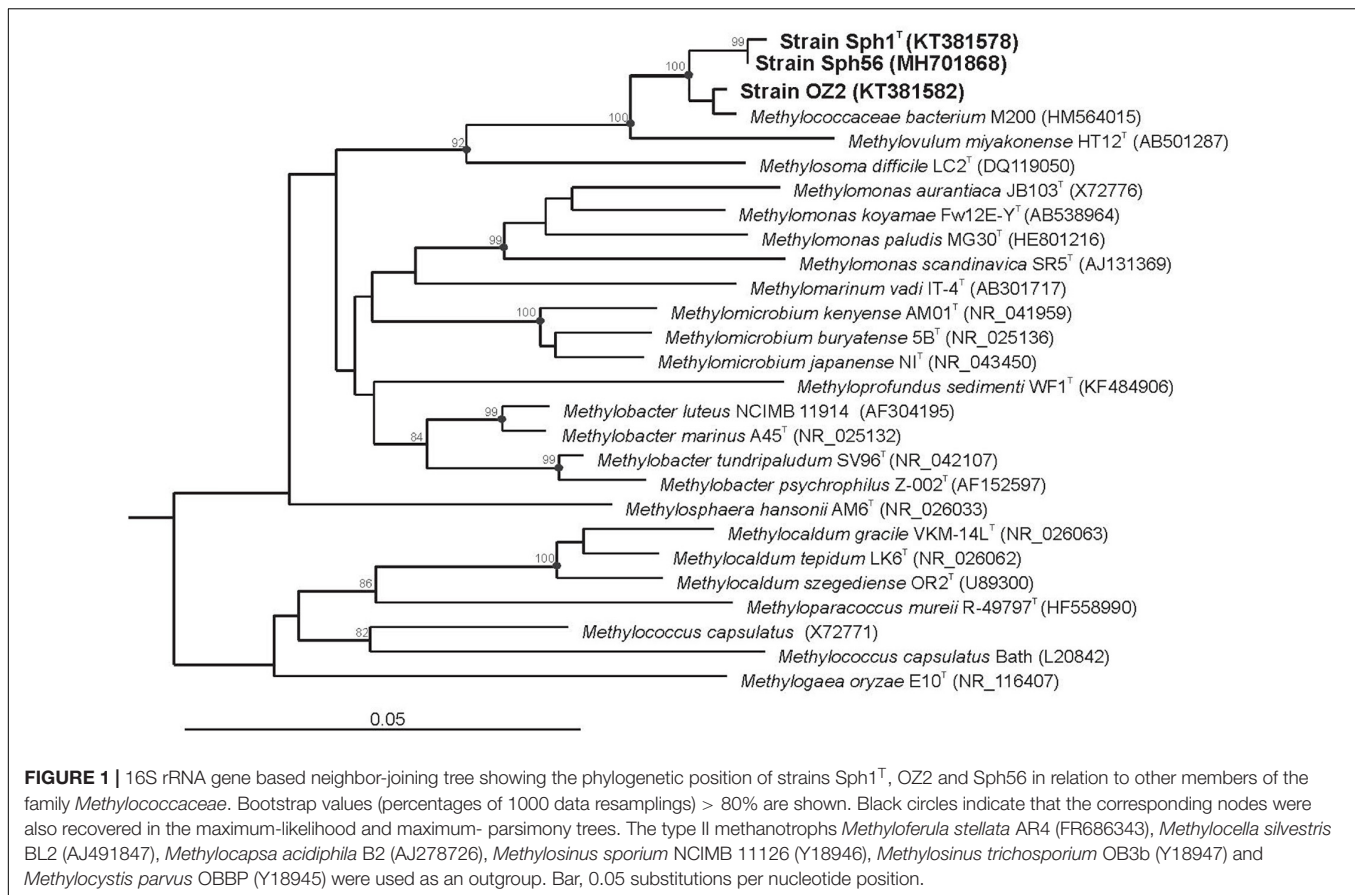
In this study, three strains of *M. psychrotolerans* (Sph1<sup>T</sup>, OZ2, and Sph56) were grown at three different growth temperatures, 20, 10 and 4°C. In order to examine growth temperature-driven changes in their lipid distribution, the FA distribution (bulk and IPL-bound) was examined at each growth temperature. The changes in hopanoids were examined by analysis of the hopanols formed by Rohmer degradation of intact BHPs.

## MATERIALS AND METHODS

### Strains and Culture Conditions

Three strains of *Methylovulum psychrotolerans* isolated from different geographical locations in Northern Russia were used in this study. The type strain of this species, Sph1<sup>T</sup>, was obtained from a cold methane seep located in the valley of the river Mukhrinskaya, Irtys basin, West Siberia (60°53.358' N 68°42.486' E). Strain OZ2 was isolated from sediments of a subarctic, shallow, unnamed freshwater lake in Archangelsk region (67° 36.567' N 53°35.317' E). These two strains were characterized in detail by Oshkin et al. (2016). The third strain, designated Sph56, was isolated from sediments of an arctic, unnamed freshwater lake located on the island Belyy in the Kara Sea (73°20.25' N 70°10.59' E) (**Supplementary Figure S1**). Cell morphology and physiological characteristics of strain Sph56 were highly similar to those of strains Sph1<sup>T</sup> and OZ2. In addition, the 16S rRNA gene sequence determined for strain Sph56 (GenBank Accession number MH701868) displayed 99.5 % identity to the corresponding gene sequences from strains Sph1<sup>T</sup> and OZ2 (**Figure 1**). Based on these data, strain Sph56 has also been identified as belonging to the species *Methylovulum psychrotolerans*.

For lipid analysis, the three strains were cultivated in NMS medium containing (in gram per liter) MgSO<sub>4</sub>, 1; KNO<sub>3</sub>, 1; CaCl<sub>2</sub>, 100; KH<sub>2</sub>PO<sub>4</sub>, 0.272; Na<sub>2</sub>HPO<sub>4</sub> × 12H<sub>2</sub>O, 0.717 with the addition of 0.1 % (v/v) of a trace elements stock solution containing (in grams per liter) EDTA, 5; FeSO<sub>4</sub>·7H<sub>2</sub>O, 2; ZnSO<sub>4</sub>·7H<sub>2</sub>O, 0.1; MnCl<sub>2</sub>·4H<sub>2</sub>O, 0.03; CoCl<sub>2</sub>·6H<sub>2</sub>O, 0.2; CuCl<sub>2</sub>·5H<sub>2</sub>O, 0.1; NiCl<sub>2</sub>·6H<sub>2</sub>O, 0.02; and Na<sub>2</sub>MoO<sub>4</sub>, 0.03. The medium pH was 6.8. The flasks of a total volume 500 ml were filled to 20 % capacity with NMS medium, sealed with rubber septa, and CH<sub>4</sub> (30%, v/v) was added to the headspace using syringes equipped with disposable filters (0.22  $\mu$ m). The cultures were grown in a Multitron Pro shaker incubator (Infors HT, Switzerland) at 4, 10 and 20°C, respectively, and were harvested in late exponential growth phase.



## Measurements of Methane Oxidation Rates

Prior to kinetic experiments, strains Sph1<sup>T</sup>, OZ2 and Sph56 were maintained in NMS medium at 4, 10 and 20°C, respectively, for one month, with regular transfers after 5–7 days. Methane oxidation rates were determined as described by Knief and Dunfield (2005). Briefly, the cells were counted, and the cultures were diluted to  $1 \times 10^8$  cells ml<sup>-1</sup> with 0.5 mM phosphate buffer. Chloramphenicol (1.25 mg l<sup>-1</sup>) was added to the experimental flasks to inhibit further cell growth. Aliquots (10 ml) of cell suspensions were added to 500-ml flasks, which were sealed gas-tight with butyl rubber septa. Methane was added to final mixing ratios of 0.5% (v/v). The flasks were fixed in a horizontal position on a rotary shaker with the temperature settings of 4, 10 and 20°C, respectively, and shaken at 110 rpm. The decrease of methane concentration in the headspace was followed over time using a gas chromatograph (Chromatec crystal 5000, Chromatec, Russia) equipped with a flame ionization detector. Methane oxidation rates were estimated by linear regressions of CH<sub>4</sub> concentrations versus time.

## Fatty Acid Analysis

For (bulk) fatty acid (FA) analysis, aliquots of the lyophilized cells from duplicate cultures were hydrolyzed by refluxing with 1.5N HCl:MeOH solution for 3 h. After adjustment of the pH

to 4–5 with a 2 N KOH/MeOH (1/1, v/v) solution, extraction with dichloromethane (DCM) was carried out. The resulting extract was methylated with diazomethane in diethyl ether which was removed under a stream of N<sub>2</sub>. Before analysis an aliquot was treated with BSTFA in pyridine to derivatize alcohol groups and then brought to a final volume with ethyl acetate. FA methyl ester (FAME) identification was carried out using gas chromatography-mass spectrometry (Thermo Finnigan TRACE GC-MS). FAMES were separated using a CP-SIL 5CB capillary column (length 25 m × internal diameter 0.32 mm, coating 0.12 μm) with the following oven conditions: initial temperature 70°C, increasing to 130°C by 20°C min<sup>-1</sup>, then increasing to 320°C by 4°C min<sup>-1</sup> and held for 10 min. MS operating parameters were: electron multiplier 1663 V; source temperature 250°C; full scan *m/z* 50–800; scan time 0.33 s. MS data were acquired and processed using the Thermo Finnigan Xcalibur software. FAMES were identified based on literature data and library mass spectra. Double bond positions were determined, where possible, using dimethyldisulfide (DMDS) derivatization of the FAMES. To this end, extracts were derivatized in hexane (100 μl) with DMDS (Merck ≥ 99%; 100 μl) and I<sub>2</sub>/ether (60 mg ml<sup>-1</sup>; 20 μl) and heated overnight at 40°C. Hexane (400 μl) was then added with Na<sub>2</sub>S<sub>2</sub>O<sub>3</sub> (5% aqueous solution; 200 μl) to deactivate the iodine. The hexane layer was removed, and the aqueous phase washed with hexane (× 2). The hexane layers were combined and analyzed by GC-MS as described above.

## Hopanoid Analysis

For the detection of the presence of biohopanoids, lyophilized cells were directly treated with periodic acid/sodium borohydride to convert bacteriohopanepolyols (BHPs) into GC-amenable hopanoid alcohols (hopanols) following procedure 2 described by Rohmer et al. (1984) with some modifications. Lyophilized cells (ca. 10 mg) were stirred with 1 ml of a solution of periodic acid (30 mg) in tetrahydrofuran/water (8:1, v/v) at room temperature for 1 h. After addition of water (1 ml), the lipids were extracted three times with DCM (2 ml), and the solution was dried over anhydrous Na<sub>2</sub>SO<sub>4</sub>, and evaporated to dryness. The residue was treated with 20 mg of NaBH<sub>4</sub> in 1 ml methanol by stirring at room temperature for 1 h. After addition of a solution of KH<sub>2</sub>PO<sub>4</sub> (1 ml, 200 mM), the hopanols were extracted with DCM. The obtained reaction mixture was methylated with diazomethane and separated over a small column with activated Al<sub>2</sub>O<sub>3</sub> into an apolar and a polar fraction using DCM and DCM-MeOH (2:1, v/v) as eluent, respectively. The polar fractions were silylated with N,O-bis(trimethylsilyl)-fluoroacetamide in pyridine at 60°C for 20 min and analyzed by GC and GC-MS. The distribution of hopanols was obtained by integration of the appropriate peaks. GC and GC-MS analysis was performed as described above for fatty acid analysis.

## Intact Polar Lipid Analysis

The lyophilized biomass of Sph56 (single replicates from 20, 10 and 4°C) was extracted using a modified Bligh-Dyer procedure (Bligh and Dyer, 1959). Briefly, the biomass was extracted ultrasonically three times for 10 min in a solvent mixture of methanol:dichloromethane:phosphate buffer (2:1:0.8, v:v). After sonication, the combined supernatants were phase-separated by adding additional dichloromethane and buffer to a final solvent ratio of 1:1:0.9 (v:v). The organic phase containing the IPLs was collected and the aqueous phase re-extracted three times with dichloromethane. Finally, the combined extract was dried under a stream of N<sub>2</sub> gas. Before analysis the extract was redissolved in a mixture of MeOH:DCM (9:1, v:v) and aliquots were filtered through 0.45 μm regenerated cellulose syringe filters (4 mm diameter; Grace Alltech, Deerfield, IL, United States). Analysis of extracts was carried out using an Ultra High Pressure Liquid Chromatography-High Resolution Mass Spectrometry (UHPLC-HRMS) according to the reversed phase method of Wörmer et al. (2013) with some modifications. We used an Ultimate 3000 RS UHPLC, equipped with thermostatted auto-injector and column oven, coupled to a Q Exactive Orbitrap MS with Ion Max source with heated electrospray ionization (HESI) probe (Thermo Fisher Scientific, Waltham, MA, United States). Separation was achieved on an Acquity BEH C18 column (Waters, 2.1 × 150 mm, 1.7 μm) maintained at 30°C. The eluent composition was (A) MeOH:H<sub>2</sub>O:formic acid:14.8 M NH<sub>3aq</sub> (85:15:0.12:0.04 [v:v:v]) and (B) IPA:MeOH:formic acid:14.8 M NH<sub>3aq</sub> (50:50:0.12:0.04 [v:v:v]). The elution program was: 95% A for 3 min, followed by a linear gradient to 40% A at 12 min and then to 0% A at 50 min, this was maintained until 80 min. The flow rate was 0.2 mL min<sup>-1</sup>. Positive ion ESI settings were: capillary temperature, 300°C; sheath gas (N<sub>2</sub>) pressure, 40 arbitrary

units (AU); auxiliary gas (N<sub>2</sub>) pressure, 10 AU; spray voltage, 4.5 kV; probe heater temperature, 50°C; S-lens 70 V. Target lipids were analyzed with a mass range of m/z 350–2000 (resolving power 70,000 ppm at m/z 200), followed by data-dependent tandem MS<sup>2</sup> (resolving power 17,500 ppm), in which the ten most abundant masses in the mass spectrum were fragmented successively (stepped normalized collision energy 15, 22.5, 30; isolation width, 1.0 m/z). The Q Exactive was calibrated within a mass accuracy range of 1 ppm using the Thermo Scientific Pierce LTQ Velos ESI Positive Ion Calibration Solution. During analysis dynamic exclusion was used to temporarily exclude masses (for 6 s) in order to allow selection of less abundant ions for MS<sup>2</sup>. The relative abundance of peak areas does not necessarily reflect the actual relative abundance of the different compounds, however, this method allows for comparison between the samples analyzed in this study. The IPL groups were identified through comparison with fragmentation patterns of authentic standards, as described in Brandsma et al. (2012). The chain length and number of double bond equivalents of the IPL-bound fatty acids (FA) were determined by either the fragment ions or neutral losses diagnostic for FAs obtained in the MS<sup>2</sup> spectra (Brügger et al., 1997; Brandsma et al., 2012). The peak areas were determined from extracted ion chromatograms of the dominant ion formed for each individual IPL species.

## Genomic Analyses

The sequences of putative fatty acid desaturase (POZ50891.1) and sterol desaturase (POZ53527.1) of *M. psychrotolerans* Sph1<sup>T</sup> (GenBank accession no. PGFZ01000000; Oshkin et al., 2018) were identified with the PSI-BLAST algorithm using the (5) fatty acid desaturase (5-Des; O34653) from *Bacillus subtilis* and sterol desaturase ERG3 (P32353) from *Saccharomyces cerevisiae* as queries. The sequences were aligned with MAFFT (Katoh and Standley, 2013) in the <http://www.ebi.ac.uk/Tools> server (Chojnacki et al., 2017) using the BLOSUM62 substitution matrix with a gap open penalty of 1 and a gap extension penalty of 0.05. The alignment was edited with Jalview (Waterhouse et al., 2009) and the presence of conserved histidine rich motifs was verified.

## RESULTS AND DISCUSSION

### Methane Oxidation at Different Temperatures

The decline of CH<sub>4</sub> concentration in the experimental flasks incubated at different temperatures is shown in **Figure 2**. The highest methane oxidizing activities (6.9–7.4 × 10<sup>-15</sup> mol CH<sub>4</sub> h<sup>-1</sup> cell<sup>-1</sup>) were observed at 20°C, which is consistent with the original description of *Methylovulum psychrotolerans* as showing growth optimum at 20–25°C (Oshkin et al., 2016). Methane oxidation rates measured for these methanotrophs at 10°C were in the range 3.9–4.4 × 10<sup>-15</sup> mol CH<sub>4</sub> h<sup>-1</sup> cell<sup>-1</sup>, thus constituting 57–60% of the corresponding activities at 20°C. As a rule, lowering the temperature by 10°C induces a two- to fourfold decrease in enzyme activity (i.e., the so-called Q<sub>10</sub> value; Feller and Gerday, 2003). Methanotrophs

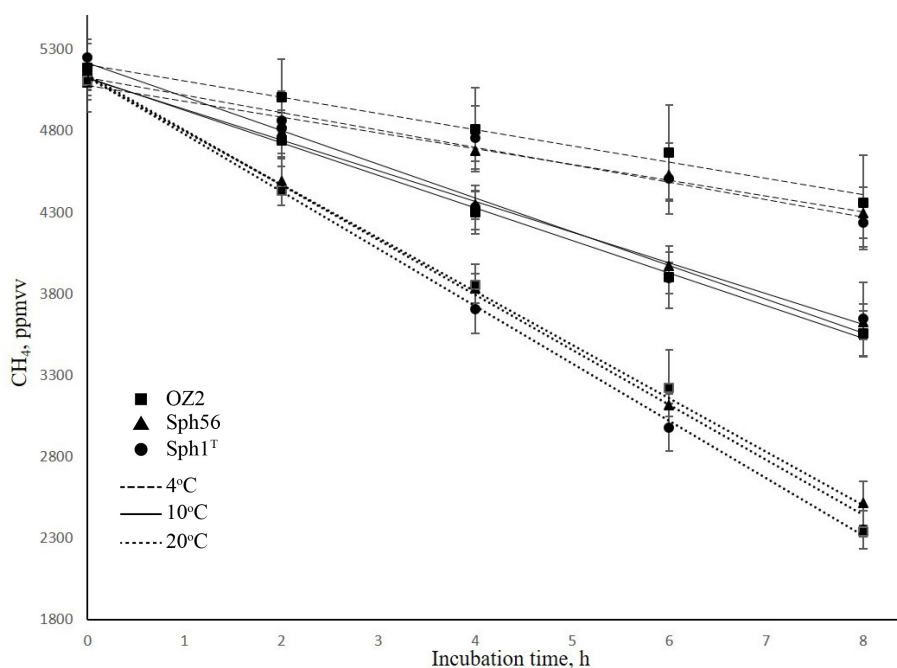
examined in our study, therefore, were relatively resistant to decrease in 10°C away from their temperature optimum. The methane oxidation rates determined at 4°C were in the range  $2.0\text{--}2.3 \times 10^{-15} \text{ mol CH}_4 \text{ h}^{-1} \text{ cell}^{-1}$ , which is twice lower as those at 10°C (**Table 1**). All three strains of the species *Methylovulum psychrotolerans*, therefore, could be regarded as psychrotolerant mesophiles capable of oxidizing methane at low temperatures, down to 4°C. The growth rates, doubling times and the growth dynamics of the three strains at the three temperatures are given in **Supplementary Tables S1, S2** and **Figure S2**.

## The Lipid Distribution in *Methylovulum psychrotolerans*

The three *M. psychrotolerans* strains examined in duplicate contained nine bulk fatty acids (FAs):  $C_{14:1\omega7}$ ,  $C_{14:0}$ ,  $C_{15:0}$ ,  $C_{16:1\omega8c}$ ,  $C_{16:1\omega7c}$ ,  $C_{16:1\omega6c}$ ,  $C_{16:1\omega5tr}$ ,  $C_{16:0}$ ,  $\beta\text{OH-}C_{16:0}$ .  $C_{16:1\omega8c}$  was previously considered unique to type I methanotrophs (Sundh et al., 2005; Bowman, 2006) but is now known to also be produced by type II methanotrophs (Dedysh et al., 2007; Bodelier et al., 2009). However  $C_{16:1\omega8c}$  has been reported as the dominant FA in *Methylomonas methanica*, *Methylomonas fodinarum* and *Methylomonas aurantiaca* (Bowman et al., 1991).  $C_{16:1\omega7c}$  is a more cosmopolitan bacterial FA, not specific to methanotrophs. Another species of the genus *Methylovulum*, *Methylovulum miyakonense*, has been reported to have a similar FA distribution to that of *M. psychrotolerans* (Oshkin et al., 2016).

Three Bligh-Dyer extracts of one strain (Sph56), grown at 20, 10 and 4°C, were examined for their intact polar lipid (IPL) distribution. The IPLs detected had either phosphatidylglycerol (PG) or phosphatidylethanolamine (PE) head groups, with a range of FA combinations (**Table 2**). The head group composition was very similar to that of a range of methanotrophic bacteria described previously (Fang et al., 2000). Additionally, a lyso-PE, (PE in which one of the FA chains is not present) was detected. The majority of IPLs were PE, with the ratio of PG/PE as 0.2. Where possible, the chain length and number of double bond equivalents of the IPL-bound FAs were determined by either the fragment ions diagnostic for FAs obtained in the MS<sup>2</sup> (Brügger et al., 1997; Brandsma et al., 2012). Where this was not possible (cf. **Table 2**) an informed estimation of the FAs associated with each IPL was made. In addition to the  $C_{14:0}$ ,  $C_{14:1}$ ,  $C_{15:0}$ ,  $C_{16:0}$  and  $C_{16:1}$  detected in the bulk FAs,  $C_{15:1}$  and  $C_{16:2}$  were also detected. The  $C_{15:1}$  and  $C_{16:2}$  were not detected in the bulk FAs, probably due to their very low abundance and differences in the limit of detection for the different analytical methods applied.

Six hopanols formed by Rohmer degradation of BHPs were identified across the duplicates of the three strains (see **Figure 3** for structures):  $C_{30:0}$  (homohopanol),  $C_{30:1}$  (homohop-11-enol),  $C_{31:0}$  (homohopan-31-ol),  $C_{31:1}$  (homohop-11-en-31-ol),  $C_{32:0}$  (*bis*-homohopan-32-ol) and  $C_{32:1}$  (*bis*-homohop-11-en-32-ol). The double bond position in the three unsaturated hopanols was confirmed as  $\Delta^{11}$  by both the absence of  $m/z$  119 ion peaks and the presence of  $M - 192$  Da ion peaks in their EI mass spectra (Cvejic et al., 2000a,b; Talbot et al., 2007b; van Winden et al., 2012b). These hopanols are the



**FIGURE 2 |** Dynamics of methane concentration in the experimental flasks with strains Sph1<sup>T</sup> (circles), OZ2 (squares), and Sph56 (triangles) at different incubation temperatures. Dotted, solid and dashed lines indicate incubations at 20, 10 and 4°C, respectively. The linear decline in methane concentration indicates that cell growth did not occur during the incubation period. Data are means of triplicate.

**TABLE 1** | Methane oxidation rates ( $\times 10^{-15}$  mol CH<sub>4</sub> h<sup>-1</sup> cell<sup>-1</sup>) of *Methylovulum psychrotolerans* strains Sph1<sup>T</sup>, OZ2, and Sph56 measured at 4, 10 and 20°C and calculated per cell.

Strain	Temperature (°C)		
	20	10	4
Sph1 <sup>T</sup>	7.40 ± 0.39	4.40 ± 0.36	2.30 ± 0.17
OZ2	7.10 ± 0.35	4.20 ± 0.34	2.10 ± 0.31
Sph56	6.90 ± 0.24	3.90 ± 0.23	2.00 ± 0.26

**TABLE 2** | Relative percentage of intact polar lipids in *Methylovulum psychrotolerans* (strain Sph56) measured at 4, 10 and 20°C.

		20°C	10°C	4°C
IPLs	Lyso-PE 16:1*	1.2	4.3	2.2
	PE 28:0 (14:0,14:0)*	1.4	1.0	0.8
	PE 28:1 (14:0,14:1)	2.3	6.7	6.3
	PE 28:2 (14:1,14:1)*	0.0	0.3	0.3
	PE 29:0 (14:0, 15:0)*	0.2	0.3	0.2
	PE 29:1 (14:1, 15:0)*	0.3	1.2	1.3
	PE 30:0 (14:0, 16:0)*	2.2	0.5	0.4
	PE 30:1 (14:0, 16:1)*	14	14	13
	PE 30:2 (14:1, 16:1)*	3.6	14	16
	PE 31:0 (15:0, 16:0)*	0.3	0.0	0.0
	PE 31:1 (15:0, 16:1)*	2.5	2.6	3.0
	PE 31:2 (15:1, 16:1)*	0.5	1.6	2.0
	PE 32:0 (16:0, 16:0)*	2.2	0.1	0.1
	PE 32:1 (16:0, 16:1)*	21	5.8	5.8
	PE 32:2 (16:1, 16:1)*	33	33	33
	PE 32:3 (16:1, 16:2)*	0.0	0.1	0.1
	PG 28:0 (14:0,14:0)*	0.2	0.2	0.1
	PG 28:1 (14:0,14:1)	0.2	0.8	0.8
	PG 29:1 (14:1, 15:0)	0.0	0.1	0.1
	PG 30:0 (14:0, 16:0)*	0.5	0.1	0.1
	PG 30:1 (14:0, 16:1)*	2.5	3.3	2.9
	PG 30:2 (14:1, 16:1)*	0.2	2.0	2.4
	PG 31:1 (15:0, 16:1)*	0.2	0.1	0.2
	PG 31:2 (15:1, 16:1)*	0.0	0.1	0.1
	PG 32:0 (16:0, 16:0)*	0.4	0.0	0.0
	PG 32:1 (16:0, 16:1)*	4.3	0.8	0.9
	PG 32:2 (16:1, 16:1)*	6.8	7.2	8.1
PG/PE ratio	0.2	0.2	0.2	
IPL-bound FAs	Total C <sub>16</sub>	82	71	70
	Total C <sub>15</sub>	2.0	3.0	3.5
	Total C <sub>14</sub>	16	26	26
	Total unsaturated	69	80	81

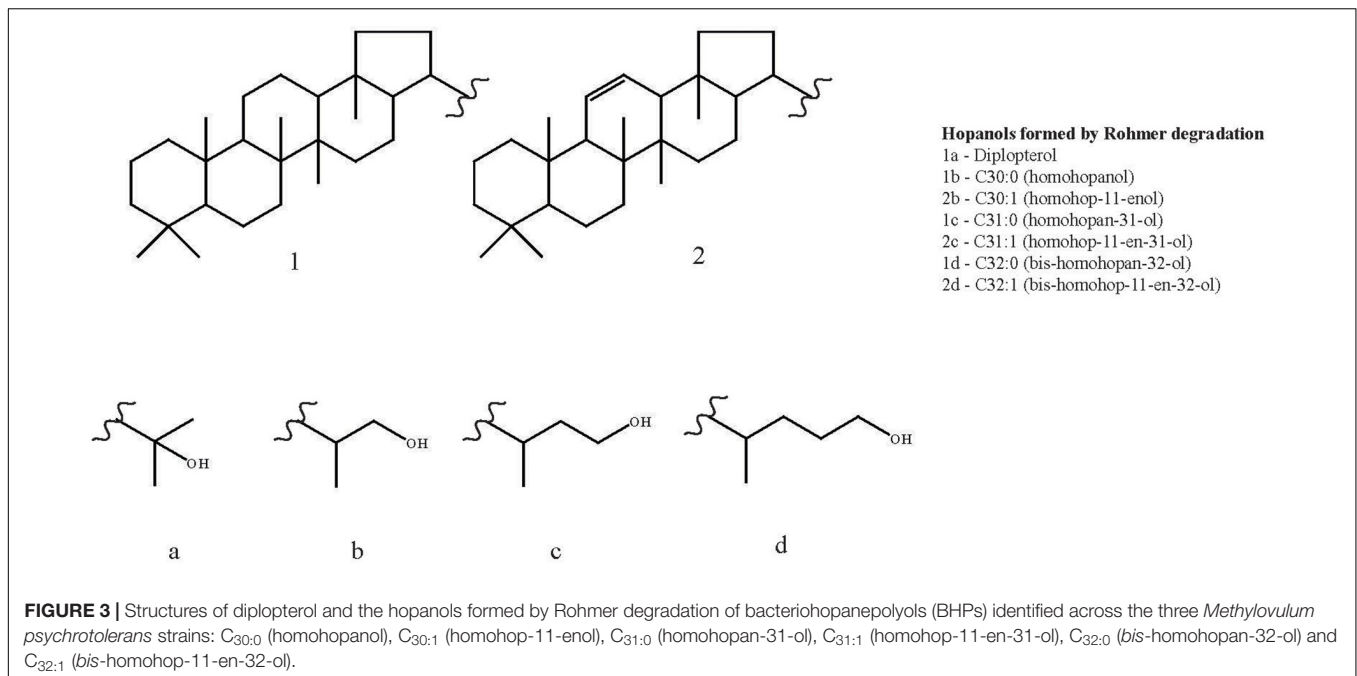
\*IPL-bound FA combination confirmed by MS<sup>2</sup> diagnostic fragment ions.

product of bacteriohopanepolyols (BHPs): tetrafunctionalised BHPs give C<sub>32</sub> hopanols, pentafunctionalised BHPs give C<sub>31</sub> hopanols and hexafunctionalised BHPs give C<sub>30</sub> hopanols. Diplopterol, not formed by degradation of a BHP, was also detected in the three strains, although not in the cultures grown at 20°C. The ratio of diplopterol to the sum of the six hopanols formed by Rohmer degradation of BHPs was on average at 0.1 ± 0.0 at both 10 and 4°C (Table 3).

The three strains exhibited similar hopanol distributions to each other (see Table 3 for data for the individual strains), although to a lesser degree than with the FAs. Tetra, penta and hexafunctionalised BHPs, from which the hopanols analyzed in this studied are derived, have been described across a range of methanotrophs, including from the genera *Methylomarinum*, *Methylomarinovum*, *Methylomicrobium*, (Rush et al., 2016), *Methylomonas*, *Methylisinus*, *Methylocella*, *Methylacidiphilium* (van Winden et al., 2012b), *Methylobacter* (Osborne et al., 2017) as well as in a *Methylovulum*-like strain M200 (van Winden et al., 2012b). Unsaturated aminotriol and aminotetrol BHPs have only to date been described in a *Methylovulum*-like strain M200 (van Winden et al., 2012b) which suggests that they are characteristic of the *Methylovulum* genera. The unsaturated aminopentol BHP has been described in the *Methylovulum*-like strain M200 and a *Methylomonas*-like strain (van Winden et al., 2012b) as well as in three strains of *Methylobacter* (Osborne et al., 2017). Additionally, the thermophilic *Methylocaldium szegediense* was found to contain a  $\Delta^{11}$  unsaturated aminopentol BHP in combination with a methyl group at the 3 $\beta$  position (Cvejic et al., 2000a). Hopanoids with  $\Delta^{11}$  unsaturations have also been identified in a range of acetic acid bacteria (Rohmer and Ourisson, 1976; Simonin et al., 1994; Herrmann et al., 1996).

## Changes in the Lipid Distribution With Changing Growth Temperature

The bulk-FA distributions of the three strains were so similar to each other at each temperature, that we discuss them further only as an average of the 6 cultures (three strains in duplicate). For the data of the individual strains see Table 4 and Figure 4. The majority of bulk-FA was C<sub>16</sub> fatty acids. At the 20°C temperature optimum, 91 ± 0.5% of bulk-FAs were C<sub>16</sub>, while at the two lower growth temperatures this percentage decreased slightly, to 86 ± 0.8 % at 10°C and 87 ± 1.5 % at 4°C. There was a concomitant increase in the C<sub>14</sub> bulk-FA with decreasing temperature, from 8.3 ± 0.4% at 20°C, to 14 ± 0.7 % at 10°C and 13 ± 1.5 % at 4°C. The single C<sub>15</sub> bulk-FA was a minor component and did not change with temperature (0.5 ± 0.0% at 20°C, 0.5 ± 0.1% at 10°C and 0.5 ± 0.1% at 4°C). The total percent of unsaturated bulk-FA (again an average of the 6 cultures, see Table 4 for data for the individual strains) increased with decreasing growth temperature. While it was 79 ± 2.0% at the 20°C optimum temperature, it had increased to 87 ± 3.1% at 10°C and 89 ± 0.9 at 4°C. The changes in total IPL-bound FAs with growth temperature were very similar to those of the bulk-FAs: the majority of fatty acids were C<sub>16</sub> fatty acids, 82% at 20°C which decreased to 71% at 10°C and 70% at 4°C. As with the bulk-FAs there was a concomitant increase in the IPL-bound C<sub>14</sub> fatty acids with decreasing temperature, from 16% at 20°C, to 26% at 10°C and 26% at 4°C. IPL-bound C<sub>15</sub> fatty acids were a minor component and changed only slightly with temperature (2.0% at 20°C, 3.0% at 10°C and 3.5% at 4°C). The total percent of unsaturated IPL-bound FAs behaved similarly, to the bulk-FAs: it increased with decreasing growth temperature, from 69% at the 20°C to 80% at 10°C and 81 at 4°C.



Previous studies have noted an increase of either more polar IPLs or more polar carotenoids in the membrane in adaptation to decreased temperature for the psychrophilic *Clostridium psychromophilum* (Guan et al., 2013) and the psychrotolerant bacteria *Micrococcus roseus* (Chattopadhyay et al., 1997) and *Sphingobacterium antarcticus* (Jagannadham et al., 2000). However, in this study the IPL head group composition, and hence its polarity did not change with temperature: the ratio of PG to PE was 0.2 at all temperatures.

Another bulk-FA change with decreasing growth temperature was a relative increase in the  $\beta$ -hydroxy FA,  $\beta$ OH-C<sub>16:0</sub>. The ratio of  $\beta$ OH-C<sub>16:0</sub> to C<sub>16:0</sub> increased as growth temperature decreased, from 0.2 at 20°C, to 0.9 at both 10 and 4°C (Table 4).  $\beta$ OH-C<sub>16:0</sub> has been detected in a range of methanotrophic bacteria (Bowman et al., 1991) and the source of many  $\beta$ -hydroxy FAs has been identified as the lipid A component of lipopolysaccharides (Wollenweber and Rietschel, 1990), which are a major constituent of the outer membrane of Gram-negative bacteria (Wollenweber and Rietschel, 1990; Keinänen et al., 2003).  $\beta$ -hydroxy FAs have been applied as biomarkers for Gram-negative bacteria in environmental studies (Klok et al., 1988; Wakeham et al., 2003; Lee et al., 2004; Wang et al., 2016) and the effect of temperature on the relative distribution of  $\beta$ -hydroxy FAs has been studied in the natural environment (Wang et al., 2016). Marr and Ingraham (1962) showed an increase in the relative percent of  $\beta$ OH-C<sub>14:0</sub> in *Escherichia coli* from 6.9 to 12% as the growth temperature decreased from 25 to 10°C.

The majority of the hopanols at the temperature optimum of 20°C were C<sub>32:0</sub> (36 ± 5.2%). The major change between the 20 and 10°C was that the relative percentage of C<sub>32:1</sub> increased significantly, from 11 ± 1.1 % to 45 ± 4.6%. It

was slightly lower at 4°C (34 ± 7.8%) but still significantly higher than at 20°C. This relative increase was countered by concomitant decreases in the other hopanols (Table 3). As was seen with the fatty acids, the percent of unsaturated hopanols increased for the cultures grown below the optimum growth temperature: from 27 ± 4.1% at 20°C, to 58 ± 2.5% at 10°C and 49 ± 7.7% at 4°C. The hopanols were also examined in terms of total C<sub>30</sub> (saturated and unsaturated), C<sub>31</sub> and C<sub>32</sub>. On average, the C<sub>30</sub> sum decreased from 32 ± 10 at 20°C to 17 ± 6.0 at 10°C and 18 ± 4.2 at 4°C. The total C<sub>31</sub> also decreased from 22 ± 5.7% at 20°C to 7.4 ± 1.4% at 10°C and 14 ± 2.8% at 4°C. Consequently, there was an increase in the total C<sub>32</sub>, from 46 ± 5.0% at 20°C to 76 ± 6.2% at 10°C and 69 ± 5.2% at 4°C.

Overall, there was an increase in the percent of unsaturated hopanols as temperature decreased, along with a decrease in both the total C<sub>30</sub> and C<sub>31</sub> and concomitant increase in C<sub>32</sub>. In a mesocosm study of symbiotic methanotrophs in *Sphagnum* moss (van Winden, 2011; van Winden et al., 2012a), no unsaturated BHPs were reported, however, the relative percentage of aminotriol BHP (corresponding to C<sub>32</sub> hopanol) increased as temperature decreased (from 25 to 5°C), while both aminotetrol BHP (corresponding to C<sub>31</sub> hopanol) and aminopentol BHP (corresponding to C<sub>30</sub> hopanol) decreased. Similarly, Osborne et al. (2017) also reported changes in the BHP distribution with temperature in methane-amended aerobic river-sediment incubations. In those temperature treatments relevant to this study, it was shown that with decreasing temperature (from 40°C to 4°C) there was also an increase in the relative percentage of aminotriol BHP (corresponding to C<sub>32</sub> hopanol), while aminopentol BHP decreased and aminotetrol BHP remained constant (Osborne et al., 2017). In contrast, Jahnke et al. (1999) reported that for a psychrotolerant

**TABLE 3** | Relative percentage of hopanols (not including diplopterol) formed by Rohmer degradation (RD) in *Methylovulum psychrotolerans* strains Sph1<sup>T</sup>, OZ2, and Sph56 measured at 4, 10 and 20°C.

Strain		20°C	10°C	4°C
Av. 3 strains	C <sub>30:1</sub>	13 ± 4.6	10 ± 2.7	10 ± 2.1
	C <sub>30:0</sub>	19 ± 6.5	6.9 ± 3.3	7.2 ± 2.3
	C <sub>31:1</sub>	4.1 ± 1.7	3.1 ± 0.7	4.3 ± 1.6
	C <sub>31:0</sub>	18 ± 4.0	4.2 ± 1.1	9.5 ± 2.8
	C <sub>32:1</sub>	11 ± 1.1	45 ± 4.6	34 ± 7.8
	C <sub>32:0</sub>	36 ± 5.2	31 ± 1.9	34 ± 3.4
	Total C <sub>30</sub>	32 ± 10	17 ± 6.0	18 ± 4.2
	Total C <sub>31</sub>	22 ± 5.7	7.4 ± 1.4	14 ± 2.8
	Total C <sub>32</sub>	46 ± 5.0	76 ± 6.2	69 ± 5.2
	Total unsaturated	27 ± 4.1	58 ± 2.5	49 ± 7.7
Sph1 <sup>T</sup>	Ratio diplopterol/Σ RD hopanols	nd	0.1 ± 0.0	0.1 ± 0.0
	C <sub>30:1</sub>	18 ± 0.8	10 ± 0.9	13 ± 1.2
	C <sub>30:0</sub>	22 ± 0.6	6.3 ± 0.5	8.5 ± 0.3
	C <sub>31:1</sub>	3.4 ± 0.0	2.7 ± 0.5	2.9 ± 0.3
	C <sub>31:0</sub>	16 ± 0.4	3.5 ± 1.1	8.6 ± 2.6
	C <sub>32:1</sub>	12 ± 0.2	47 ± 1.7	34 ± 3.6
	C <sub>32:0</sub>	30 ± 1.4	30 ± 1.3	34 ± 2.3
	Total C <sub>30</sub>	39 ± 1.4	16 ± 1.4	21 ± 1.0
	Total C <sub>31</sub>	19 ± 0.4	6.2 ± 1.6	12 ± 2.2
	Total C <sub>32</sub>	41 ± 0.9	77 ± 3.0	67 ± 1.3
OZ2	Total unsaturated	33 ± 0.9	60 ± 0.3	49 ± 5.1
	Ratio diplopterol/Σ RD hopanols	nd	0.1 ± 0.0	0.1 ± 0.0
	C <sub>30:1</sub>	13 ± 0.4	13 ± 0.4	11 ± 0.5
	C <sub>30:0</sub>	25 ± 0.3	11 ± 0.2	8.7 ± 0.1
	C <sub>31:1</sub>	2.8 ± 0.1	2.7 ± 0.1	3.8 ± 0.2
	C <sub>31:0</sub>	15 ± 0.3	5.1 ± 1.5	12 ± 0.1
	C <sub>32:1</sub>	9.2 ± 0.3	39 ± 1.0	26 ± 0.6
	C <sub>32:0</sub>	36 ± 0.5	29 ± 0.6	38 ± 0.2
	Total C <sub>30</sub>	38 ± 0.6	24 ± 0.1	19 ± 0.5
	Total C <sub>31</sub>	17 ± 0.2	7.8 ± 1.4	16 ± 0.1
Sph56	Total C <sub>32</sub>	45 ± 0.8	68 ± 1.6	64 ± 0.3
	Total unsaturated	25 ± 0.0	55 ± 0.7	41 ± 0.3
	Ratio diplopterol/Σ RD hopanols	nd	0.1 ± 0.0	0.1 ± 0.0
	C <sub>30:1</sub>	7.4 ± 0.3	7.2 ± 0.8	8.2 ± 1.3
	C <sub>30:0</sub>	11 ± 0.0	3.6 ± 0.4	4.3 ± 1.0
	C <sub>31:1</sub>	6.3 ± 0.5	3.9 ± 0.4	6.1 ± 1.4
	C <sub>31:0</sub>	23 ± 0.4	4.2 ± 0.4	7.4 ± 1.9
	C <sub>32:1</sub>	11 ± 0.1	48 ± 1.1	43 ± 3.7
	C <sub>32:0</sub>	41 ± 1.2	33 ± 1.0	31 ± 1.9
	Total C <sub>30</sub>	19 ± 0.4	11 ± 1.2	12 ± 2.3
Total C <sub>31</sub>	29 ± 1.0	8.1 ± 0.8	13 ± 3.3	
Total C <sub>32</sub>	34 ± 0.4	53 ± 0.7	50 ± 1.8	
Total unsaturated	25 ± 0.8	60 ± 0.1	57 ± 0.9	
Ratio diplopterol/Σ RD hopanols	nd	0.1 ± 0.0	0.1 ± 0.0	

methanotroph (thought to be *Methylomonas methanica*) the relative percentage of C<sub>32</sub> hopanol remained the same as temperature decreased, while the C<sub>30</sub> hopanol increased and the C<sub>31</sub> hopanol decreased. Overall, based on our results and the limited reports in the literature, it would seem that methanotrophic bacteria adapt their BHP distribution

to adapt to colder temperatures, by increasing the relative amount of tetrafunctionalised BHPs (either in the saturated or unsaturated form).

In all three *M. psychrotolerans* strains diplopterol was not detected in the cultures grown at 20°C but the ratio of diplopterol to the sum of the six hopanols was on average at 0.1 ± 0.0 at



**TABLE 4 |** Relative percentage of bulk fatty acids in *Methylovulum psychrotolerans* strains Sph1<sup>T</sup>, OZ2, and Sph56 measured at 4, 10 and 20°C.

Strain		20°C	10°C	4°C
Av. 3 strains	Total C <sub>16</sub>	91 ± 0.5	86 ± 0.8	88 ± 1.5
	Total C <sub>15</sub>	0.5 ± 0.0	0.5 ± 0.1	0.5 ± 0.1
	Total C <sub>14</sub>	8.3 ± 0.4	14 ± 0.7	13 ± 1.5
	Total unsaturated	79 ± 2.0	87 ± 3.1	89 ± 0.9
	Ratio βOH-C <sub>16:0</sub> / C <sub>16:0</sub>	0.2 ± 0.0	0.9 ± 0.2	0.9 ± 0.3
Sph1 <sup>T</sup>	C <sub>14:1 ω7</sub>	0.6 ± 0.1	4.5 ± 0.0	5.0 ± 0.1
	C <sub>14:0</sub>	7.2 ± 0.0	9.1 ± 0.1	7.4 ± 0.2
	C <sub>15:0</sub>	0.5 ± 0.0	0.5 ± 0.0	0.4 ± 0.0
	C <sub>16:1 ω8c</sub>	31 ± 3.3	15 ± 1.9	30 ± 0.2
	C <sub>16:1 ω7c</sub>	31 ± 3.2	51 ± 3.0	29 ± 0.2
	C <sub>16:1 ω6c</sub>	4.3 ± 0.1	5.7 ± 0.2	8.5 ± 0.4
	C <sub>16:1 ω5tr</sub>	12 ± 0.2	11 ± 0.9	16 ± 0.3
	C <sub>16:0</sub>	12 ± 0.1	1.7 ± 0.0	1.4 ± 0.0
	βOH-C <sub>16:0</sub>	1.9 ± 0.3	1.7 ± 0.2	1.2 ± 0.0
	Total C <sub>16</sub>	92 ± 0.1	86 ± 0.2	87 ± 0.1
	Total C <sub>15</sub>	0.5 ± 0.0	0.5 ± 0.0	0.4 ± 0.0
	Total C <sub>14</sub>	8.0 ± 0.0	14 ± 0.2	12 ± 0.1
	Total unsaturated	79 ± 0.2	87 ± 0.0	89 ± 0.2
	Ratio βOH-C <sub>16:0</sub> / C <sub>16:0</sub>	0.2 ± 0.0	1.0 ± 0.1	0.9 ± 0.0
	OZ2	C <sub>14:1 ω7</sub>	0.7 ± 0.0	4.2 ± 0.0
C <sub>14:0</sub>		8.0 ± 0.0	9.1 ± 0.5	6.5 ± 0.2
C <sub>15:0</sub>		0.6 ± 0.0	0.4 ± 0.1	0.5 ± 0.0
C <sub>16:1 ω8c</sub>		29 ± 0.0	16 ± 1.2	35 ± 0.1
C <sub>16:1 ω7c</sub>		27 ± 0.5	48 ± 0.8	28 ± 0.5
C <sub>16:1 ω6c</sub>		5.0 ± 0.0	7.0 ± 0.8	7.3 ± 0.1
C <sub>16:1 ω5tr</sub>		17 ± 0.3	12 ± 0.5	16 ± 0.1
C <sub>16:0</sub>		11 ± 0.3	2.0 ± 0.1	1.4 ± 0.0
βOH-C <sub>16:0</sub>		1.8 ± 0.1	1.3 ± 0.2	0.8 ± 0.0
Total C <sub>16</sub>		91 ± 0.0	86 ± 0.6	88 ± 0.6
Total C <sub>15</sub>		0.6 ± 0.0	0.4 ± 0.1	0.5 ± 0.0
Total C <sub>14</sub>		9.0 ± 0.0	13 ± 0.5	11 ± 0.5
Total unsaturated		79 ± 0.2	87 ± 0.9	91 ± 0.3
Ratio βOH-C <sub>16:0</sub> / C <sub>16:0</sub>		0.2 ± 0.0	0.6 ± 0.0	0.5 ± 0.0
Sph56		C <sub>14:1 ω7</sub>	0.8 ± 0.0	4.9 ± 0.3
	C <sub>14:0</sub>	7.7 ± 0.2	9.9 ± 0.3	8.5 ± 0.3
	C <sub>15:0</sub>	0.6 ± 0.1	0.6 ± 0.0	0.6 ± 0.0
	C <sub>16:1 ω8c</sub>	31 ± 0.3	24 ± 1.8	30 ± 0.6
	C <sub>16:1 ω7c</sub>	22 ± 0.0	35 ± 2.5	30 ± 0.3
	C <sub>16:1 ω6c</sub>	5.6 ± 0.1	7.4 ± 0.1	7.1 ± 0.1
	C <sub>16:1 ω5tr</sub>	21 ± 0.2	15 ± 0.3	16 ± 0.5
	C <sub>16:0</sub>	9.6 ± 0.3	1.7 ± 0.1	1.5 ± 0.1
	βOH-C <sub>16:0</sub>	1.7 ± 0.2	1.8 ± 0.2	1.7 ± 0.4
	Total C <sub>16</sub>	91 ± 0.2	85 ± 0.6	85 ± 0.5
	Total C <sub>15</sub>	0.6 ± 0.1	0.6 ± 0.0	0.6 ± 0.0
	Total C <sub>14</sub>	8 ± 0.1	15 ± 0.6	14 ± 0.4
	Total unsaturated	80 ± 0.6	86 ± 0.0	88 ± 0.7
	βOH-C <sub>16:0</sub> / C <sub>16:0</sub>	0.2 ± 0.0	1.1 ± 0.0	1.2 ± 0.2

both 10 and 4°C. During hopanoid biosynthesis, the cyclisation of squalene results in either the production of diploptene or diplopterol, but it is diploptene that is reported to be the pre-cursor in the biosynthesis of BHPs. The relative increase in

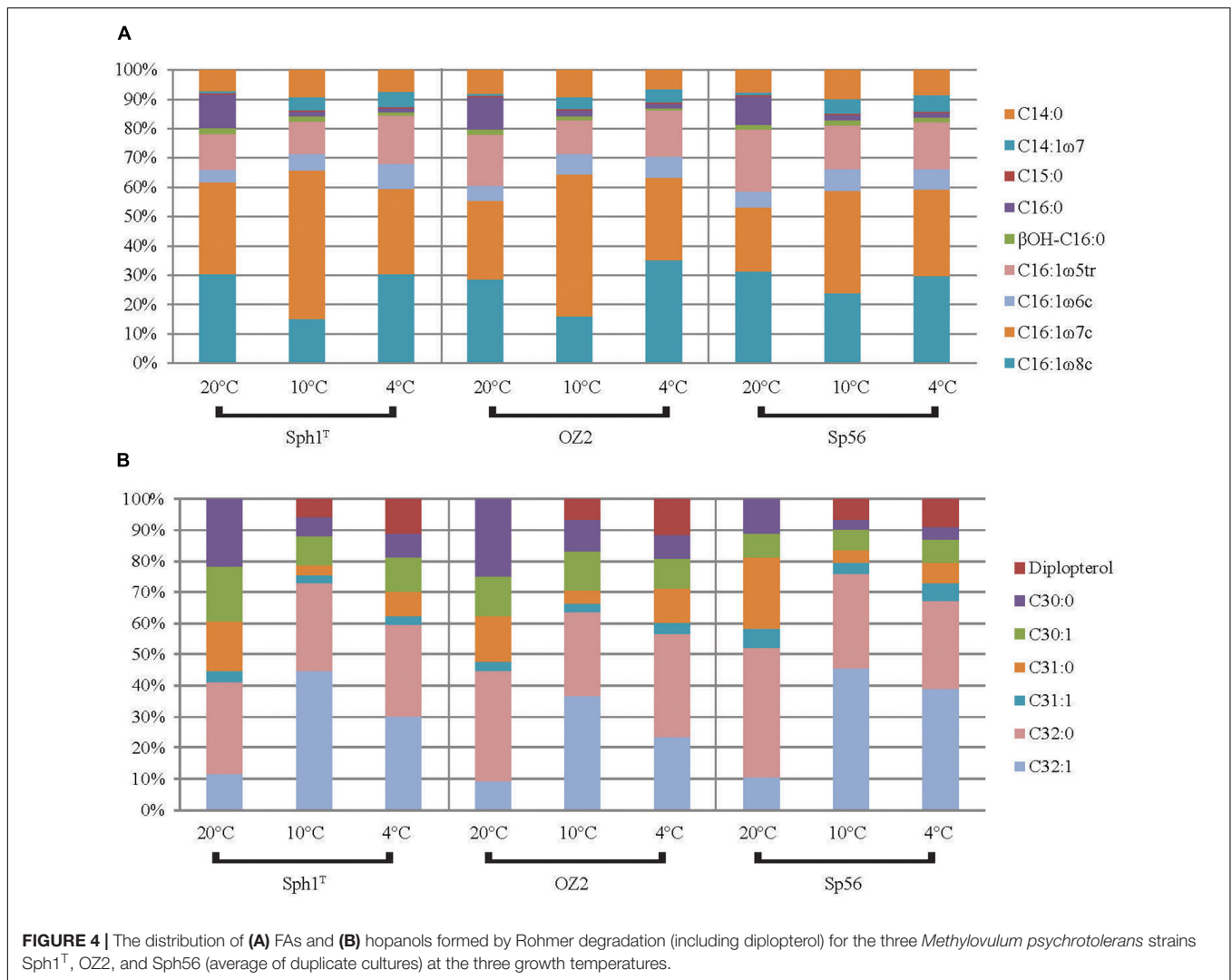
diplopterol with decreasing temperature suggests an additional membrane adaption separate from that of the BHPs.

## Processes and Implications of Lipid Remodeling

Overall, as the growth temperature decreased from 20 to 4°C, the percent of unsaturated *M. psychrotolerans* bulk-FAs increased from 79 to 89% while the total percent of unsaturated IPL-bound-FAs increased from 69 to 81% (Figure 5). Increased FA unsaturation in response to decreased temperature is a commonly observed response in order to maintain the liquid-crystalline character of bacterial membranes (Marr and Ingraham, 1962; Suutari and Laakso, 1994; Chattopadhyay, 2006; Guschina and Harwood, 2006; Barria et al., 2013; Siliakus et al., 2017). Certain bacteria have been shown to contain cold acclimation proteins (Caps) (Jones and Inouye, 1994; Berger et al., 1996), which include acyl lipid desaturases (Carty et al., 1999; Vorachek-Warren et al., 2002; Albanesi et al., 2004). These enzymes belong to the FA desaturase family (FAD) and are known to be regulated in all organisms by feedback mechanisms in which sensor proteins control the transcription of genes that modify pre-formed lipids (Aguilar and de Mendoza, 2006).

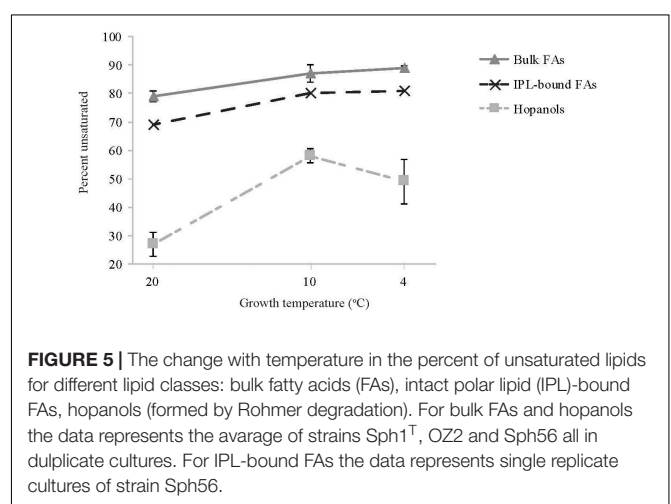
Hopanoids are involved in increasing membrane stability in certain bacteria (Welander et al., 2009; Schmerk et al., 2011) and their structure can undergo post-synthesis modifications such as methylation and side chain modifications (Welander and Summons, 2012). The most notable hopanoid temperature adaption of *M. psychrotolerans* was an increase in unsaturated hopanoids with decreasing temperature, from 27 to 49% (Figure 5). The presence of hopanoids is a common feature to all investigated obligate methanotrophs (Cvejic et al., 2000b), however very few studies have described the presence of unsaturated hopanoids. Furthermore, increased hopanoid unsaturation upon cold exposure has not been described previously and hence the enzymes responsible for the desaturation of the hopanoid core have not previously been established.

In order to investigate the mechanisms of both FA and hopanoid cold-adaption in *M. psychrotolerans*, we examined its genome for *M. psychrotolerans* for the presence of genes that potentially code for fatty acid desaturases. We identified the AADEFJLK\_03363 gene that codes for the POZ50891 protein, which is annotated as a potential FA desaturase enzyme. Topology analysis of this protein predicted that it forms four trans-membrane helices, which suggests it is an integral membrane protein (Aguilar et al., 1998). In addition, enzymes from the FAD usually contain highly conserved histidine-rich motifs, which we also identified in POZ50891 FA desaturase (H<sub>98</sub>XXXH<sub>102</sub>, H<sub>134</sub>XXH<sub>137</sub>H<sub>138</sub>, H<sub>261</sub>H<sub>262</sub>XH<sub>264</sub>, H<sub>307</sub>XXH<sub>310</sub>H<sub>311</sub>). In order to investigate the enzymatic mechanisms responsible for hopanoid unsaturation, we searched for genes that potentially code for proteins involved in this reaction. We identified a gene AADEFJLK\_00554 coding for a potential sterol desaturase POZ53527 protein, belonging to the FA hydroxylase (FAH) superfamily of proteins. Within this group, a wide set of enzymatic activities related to



hydroxylation, desaturation and oxidation have been described (Arthington et al., 1991; Bard et al., 1996; Mitchell and Martin, 1997; Ternes et al., 2002; Vences-Guzmán et al., 2011) (cf. **Supplementary Table S3**). Sterol and sterol-derived molecules are not produced by *M. psychrotolerans*, but hopanoids are considered structural analogs, therefore we postulate that the POZ53527 protein present in *M. psychrotolerans* could be involved in hopanoid desaturation, as has been postulated previously for similar sterol desaturases (Tushar et al., 2014). Topology analysis of the POZ53527 protein revealed five trans-membrane helices, suggesting that this protein is also an integral membrane protein, as well as the histidine rich motifs typically found in FAH family of proteins (**Supplementary Figure S3**).

Both the FA desaturase and the sterol desaturase identified here are integral membrane histidine motif-containing enzymes (IMHME) (Cid et al., 2017). Their sequence analyses revealed that they belong to the FAD and the FAH superfamilies, respectively. According to this classification, *M. psychrotolerans* contains one protein of each group, and both proteins can be actively involved in lipid modification under low temperature



conditions. Among the FAD family of proteins, the bacterial FA desaturase ( $\Delta$ 5-Des) of *B. subtilis* has been characterized

and it is known to be transcriptionally regulated in response to decreased temperature (Aguilar et al., 1998). Proteins that belong to the FAH family of proteins, are very diverse in their activities and substrate specificities (Cid et al., 2017) (Summarized in **Supplementary Table S3**). The potential *M. psychrotolerans* hopanoid desaturase protein POZ53527 belongs to this classification and will represent a novel enzymatic activity related to the substrate specificity to hopanoids. Thus, we propose that the unsaturation of hopanoids represents a novel membrane remodeling feature in order to maintain the membrane homeostasis upon cold adaptation. If this hypothesis is correct, these results may be useful for studies of the natural environment. Indeed, it may be possible to make inferences from the proportion of  $\Delta^{11}$  unsaturated hopanoids about growth temperature or the ecological niche of BHP producers, in particular in low-temperature environments. However, to date the reports of  $\Delta^{11}$  unsaturated hopanoids in the natural environment are limited (e.g., Cooke et al., 2008; Handley et al., 2010; Spencer-Jones et al., 2015; Rush et al., 2016).

## CONCLUSION

Three strains of *Methylovulum psychrotolerans* were grown at three different growth temperatures, 20°C, 10°C and 4°C and were capable of oxidizing methane down to 4°C. The three *M. psychrotolerans* strains adapted to decreasing growth temperature by increasing unsaturation in both FAs (bulk and IPL-bound) and hopanoids. The bulk FA ratio of  $\beta$ OH-C<sub>16:0</sub> to C<sub>16:0</sub> increased as growth temperature decreased. The hopanoid composition of *M. psychrotolerans* contains C<sub>30:0</sub>, C<sub>31:0</sub> and C<sub>32:0</sub> along with their unsaturated forms. The most notable hopanoid adaptation *M. psychrotolerans* exhibited to lower growth temperatures was an increase in C<sub>32:1</sub> hopanols (formed from unsaturated tetrafunctionalised BHPs). The total sum of C<sub>32</sub> hopanols increased as temperature decreased. Similar results have been reported in other studies. Diplopterol was not detected in the cultures grown at 20°C but was present at 10 and 4°C.

Our results demonstrate that not only FAs, but also hopanoids can be remodeled to maintain bacterial membrane homeostasis

upon cold adaptation. We identified genes that potentially code for FA lipid desaturases and for hopanoid unsaturation in the genome of *M. psychrotolerans*. Further work would be needed to produce the biochemical evidence of the enzymatic activity of the proposed membrane-adaptation genes in *M. psychrotolerans*.

## AUTHOR CONTRIBUTIONS

NB carried out data analysis and wrote the manuscript. WR carried out extractions and lipid analysis. DS-C carried out genomic analyses. IO and SB cultured bacteria and measured methane oxidation rates. SD and JSD designed and supervised the study.

## FUNDING

This project received funding from the European Research Council (ERC) under the European Union's Horizon 2020 research and innovation program (Grant Agreement No. 694569). IO, SB, and SD were supported by the Ministry of Science and High Education of Russia.

## ACKNOWLEDGMENTS

We thank E. Hopmans for help and expertise in sample analysis and data interpretation. We also thank D. Rush, N. Smit, L. Villanueva and S. Schouten for invaluable discussions during preparation of this manuscript. We thank the reviewers for constructive and helpful suggestions that greatly improved this paper.

## SUPPLEMENTARY MATERIAL

The Supplementary Material for this article can be found online at: <https://www.frontiersin.org/articles/10.3389/fmicb.2019.00589/full#supplementary-material>

## REFERENCES

- Aguilar, P. S., Cronan, J. E., and de Mendoza, D. (1998). A *Bacillus subtilis* gene induced by cold shock encodes a membrane phospholipid desaturase. *J. Bacteriol.* 180, 2194–2200.
- Aguilar, P. S., and de Mendoza, D. (2006). Control of fatty acid desaturation: a mechanism conserved from bacteria to humans. *Mol. Microbiol.* 62, 1507–1514. doi: 10.1111/j.1365-2958.2006.05484.x
- Albanesi, D., Mansilla, M. C., and de Mendoza, D. (2004). The membrane fluidity sensor DesK of *Bacillus subtilis* controls the signal decay of its cognate response regulator. *J. Bacteriol.* 186, 2655–2663.
- Arthington, B. A., Bennett, L. G., Skatrud, P. L., Guynn, C. J., Barbuch, R. J., Ulbright, C. E., et al. (1991). Cloning, disruption and sequence of the gene encoding yeast C-5 sterol desaturase. *Gene* 102, 39–44.
- Auman, A. J., Breezee, J. L., Gosink, J. J., Kämpfer, P., and Staley, J. T. (2006). *Psychromonas ingrahamii* sp. nov., a novel gas vacuolate, psychrophilic bacterium isolated from Arctic polar sea ice. *Int. J. Syst. Evol. Microbiol.* 56, 1001–1007. doi: 10.1099/ijso.0.64068-0
- Bard, M., Bruner, D. A., Pierson, C. A., Lees, N. D., Biermann, B., Frye, L., et al. (1996). Cloning and characterization of ERG25, the *Saccharomyces cerevisiae* gene encoding C-4 sterol methyl oxidase. *Proc. Natl. Acad. Sci. U.S.A.* 93, 186–190.
- Barria, C., Malecki, M., and Arraiano, C. M. (2013). Bacterial adaptation to cold. *Microbiology* 159, 2437–2443. doi: 10.1099/mic.0.052209-0
- Berger, F., Morellet, N., Menu, F., and Potier, P. (1996). Cold shock and cold acclimation proteins in the psychrotrophic bacterium *Arthrobacter globiformis* SI55. *J. Bacteriol.* 178, 2999–3007. doi: 10.1128/jb.178.11.2999-3007.1996
- Bligh, E., and Dyer, W. (1959). A rapid method of total lipid extraction and purification. *Can. J. Biochem. Phys.* 37, 911–917.
- Bodelier, P. L. E., Gillisen, M.-J. B., Hordijk, K., Damsté, J. S. S., Rijpstra, W. I. C., Geenevasen, J. A. J., et al. (2009). A reanalysis of phospholipid fatty acids as ecological biomarkers for methanotrophic bacteria. *ISME J.* 3, 606–617. doi: 10.1038/ismej.2009.6
- Bowman, J. (2006). “The methanotrophs — The families methylococcaceae and methylocystaceae,” in *The Prokaryotes*, eds M. Dworkin, S. Falkow, E.

- Rosenberg, K. H. Schleifer, and E. Stackebrandt (New York, NY: Springer), 266–289. doi: 10.1007/0-387-30745-1\_15
- Bowman, J. P., Skerratt, J. H., Nichols, P. D., and Sly, L. I. (1991). Phospholipid fatty acid and lipopolysaccharide fatty acid signature lipids in methane-utilizing bacteria. *FEMS Microbiol. Lett.* 85, 15–21.
- Brandsma, J., Hopmans, E. C., Brussaard, C. P. D., Witte, H. J., Schouten, S., and Sinninghe Damsté, J. S. (2012). Spatial distribution of intact polar lipids in North Sea surface waters: Relationship with environmental conditions and microbial community composition. *Limnol. Oceanogr.* 57, 959–973. doi: 10.4319/lo.2012.57.4.0959
- Breeze, J., Cady, N., and Staley, J. T. (2004). Subfreezing growth of the sea ice bacterium “*Psychromonas ingrahamii*.” *Microb. Ecol.* 47, 300–304. doi: 10.1007/s00248-003-1040-9
- Brügger, B., Erben, G., Sandhoff, R., Wieland, F. T., and Lehmann, W. D. (1997). Quantitative analysis of biological membrane lipids at the low picomole level by nano-electrospray ionization tandem mass spectrometry. *Proc. Natl. Acad. Sci. U.S.A.* 94, 2339–2344.
- Carty, S. M., Sreekumar, K. R., and Raetz, C. R. H. (1999). Effect of cold shock on lipid A biosynthesis in *Escherichia coli*. Induction at 12 °C of an acyltransferase specific for palmitoleoyl-acyl carrier protEIN. *J. Biol. Chem.* 274, 9677–9685. doi: 10.1074/jbc.274.14.9677
- Chattopadhyay, M. K. (2006). Mechanism of bacterial adaptation to low temperature. *J. Biosci.* 31, 157–165.
- Chattopadhyay, M. K., Jagannadham, M. V., Vairamani, M., and Shivaji, S. (1997). Carotenoid pigments of an antarctic psychrotrophic bacterium *Micrococcus roseus*: temperature dependent biosynthesis, structure, and interaction with synthetic membranes. *Biochem. Biophys. Res. Commun.* 239, 85–90. doi: 10.1006/bbrc.1997.7433
- Chintalapati, S., Kiran, M. D., and Shivaji, S. (2004). Role of membrane lipid fatty acids in cold adaptation. *Cell. Mol. Biol.* 50, 631–642.
- Chojnacki, S., Cowley, A., Lee, J., Foix, A., and Lopez, R. (2017). Programmatic access to bioinformatics tools from EMBL-EBI update: 2017. *Nucleic Acids Res.* 45, W550–W553. doi: 10.1093/nar/gkx273
- Cid, N. G., Sanchez Granel, M. L., Montes, M. G., Elguero, M. E., Nudel, C. B., and Nusblat, A. D. (2017). Phylogenomic analysis of integral diiron membrane histidine motif-containing enzymes in ciliates provides insights into their function and evolutionary relationships. *Mol. Phylogenet. Evol.* 114, 1–13. doi: 10.1016/j.ympev.2017.05.023
- Cooke, M. P., Talbot, H. M., and Farrimond, P. (2008). Bacterial populations recorded in bacteriohopanepolyol distributions in soils from Northern England. *Org. Geochem.* 39, 1347–1358. doi: 10.1016/j.orggeochem.2008.05.003
- Cvejic, J. H., Bodrossy, L., Kovács, K. L., and Rohmer, M. (2000a). Bacterial triterpenoids of the hopane series from the methanotrophic bacteria *Methylocaldum* spp.: phylogenetic implications and first evidence for an unsaturated aminobacteriohopanepolyol. *FEMS Microbiol. Lett.* 182, 361–365.
- Cvejic, J. H., Putra, S. R., El-Beltagy, A., Hattori, R., Hattori, T., and Rohmer, M. (2000b). Bacterial triterpenoids of the hopane series as biomarkers for the chemotaxonomy of Burkholderia, *Pseudomonas* and *Ralstonia* spp. *FEMS Microbiol. Lett.* 183, 295–299.
- Dedysh, S. N., Belova, S. E., Bodelier, P. L. E., Smirnova, K. V., Khmelena, V. N., Chidthaisong, A., et al. (2007). *Methylocystis heyeri* sp. nov., a novel type II methanotrophic bacterium possessing “signature” fatty acids of type I methanotrophs. *Int. J. Syst. Evol. Microbiol.* 57, 472–479. doi: 10.1099/ijls.0.64623-0
- Fang, J., Barcelona, M. J., and Semrau, J. D. (2000). Characterization of methanotrophic bacteria on the basis of intact phospholipid profiles. *FEMS Microbiol. Lett.* 189, 67–72. doi: 10.1111/j.1574-6968.2000.tb09207.x
- Feller, G., and Gerday, C. (2003). Psychrophilic enzymes: hot topics in cold adaptation. *Nat. Rev. Microbiol.* 1, 200–208. doi: 10.1038/nrmicro773
- Guan, Z., Tian, B., Perfumo, A., and Goldfine, H. (2013). The polar lipids of *Clostridium psychrophilum*, an anaerobic psychrophile. *Biochim. Biophys. Acta* 1831, 1108–1112. doi: 10.1016/j.bbali.2013.02.004
- Guschina, I. A., and Harwood, J. L. (2006). Mechanisms of temperature adaptation in poikilotherms. *FEBS Lett.* 580, 5477–5483. doi: 10.1016/j.febslet.2006.06.066
- Handley, L., Talbot, H. M., Cooke, M. P., Anderson, K. E., and Wagner, T. (2010). Bacteriohopanepolyols as tracers for continental and marine organic matter supply and phases of enhanced nitrogen cycling on the late Quaternary Congo deep sea fan. *Org. Geochem.* 41, 910–914. doi: 10.1016/j.orggeochem.2010.04.016
- Hanson, R. S., and Hanson, T. E. (1996). Methanotrophic bacteria. *Microbiol. Rev.* 60, 439–471.
- Hermans, M. A., Neuss, B., and Sahn, H. (1991). Content and composition of hopanoids in *Zymomonas mobilis* under various growth conditions. *J. Bacteriol.* 173, 5592–5595.
- Herrmann, D., Bissert, P., Connan, J., and Rohmer, M. (1996). A non-extractable triterpenoid of the hopane series in *Acetobacter xylinum*. *FEMS Microbiol. Lett.* 135, 323–326. doi: 10.1111/j.1574-6968.1996.tb08008.x
- Iguchi, H., Yurimoto, H., and Sakai, Y. (2011). *Methylovulum miyakonense* gen. nov., sp. nov., a type I methanotroph isolated from forest soil. *Int. J. Syst. Evol. Microbiol.* 61, 810–815. doi: 10.1099/ijls.0.019604-0
- Jagannadham, M. V., Chattopadhyay, M. K., Subbalakshmi, C., Vairamani, M., Narayanan, K., Rao, C. M., et al. (2000). Carotenoids of an Antarctic psychrotolerant bacterium, *Sphingobacterium antarcticus*, and a mesophilic bacterium, *Sphingobacterium multivorum*. *Arch. Microbiol.* 173, 418–424.
- Jahnke, L. L., Summons, R. E., Hope, J. M., and Des Marais, D. J. (1999). Carbon isotopic fractionation in lipids from methanotrophic bacteria II: the effects of physiology and environmental parameters on the biosynthesis and isotopic signatures of biomarkers. *Geochim. Cosmochim. Acta* 63, 79–93. doi: 10.1016/S0016-7037(98)00270-1
- Jones, P. G., and Inouye, M. (1994). The cold-shock response—a hot topic. *Mol. Microbiol.* 11, 811–818.
- Joyeux, C., Fouchard, S., Llopiz, P., and Neunlist, S. (2004). Influence of the temperature and the growth phase on the hopanoids and fatty acids content of *Frateria aurantia* (DSMZ 6220). *FEMS Microbiol. Ecol.* 47, 371–379. doi: 10.1016/S0168-6496(03)00302-7
- Katoh, K., and Standley, D. M. (2013). MAFFT multiple sequence alignment software version 7: improvements in performance and usability. *Mol. Biol. Evol.* 30, 772–780. doi: 10.1093/molbev/mst010
- Keinänen, M. M., Korhonen, L. K., Martikainen, P. J., Miettinen, I. T., Lehtola, M. J., et al. (2003). Gas chromatographic-mass spectrometric detection of 2- and 3-hydroxy fatty acids as methyl esters from soil, sediment and biofilm. *J. Chromatogr. B Analyt. Technol. Biomed. Life Sci.* 783, 443–451.
- Klok, J., Baas, M., Cox, H. C., de Leeuw, J. W., Rijpstra, W. I. C., and Schenck, P. A. (1988). The mode of occurrence of lipids in a Namibian Shelf diatomaceous ooze with emphasis on the  $\beta$ -hydroxy fatty acids. *Org. Geochem.* 12, 75–80. doi: 10.1016/0146-6380(88)90116-7
- Knief, C., and Dunfield, P. F. (2005). Response and adaptation of different methanotrophic bacteria to low methane mixing ratios. *Environ. Microbiol.* 7, 1307–1317. doi: 10.1111/j.1462-2920.2005.00814.x
- Lee, A. K. Y., Chan, C. K., Fang, M., and Lau, A. P. S. (2004). The 3-hydroxy fatty acids as biomarkers for quantification and characterization of endotoxins and Gram-negative bacteria in atmospheric aerosols in Hong Kong. *Atmos. Environ.* 38, 6307–6317. doi: 10.1016/j.atmosenv.2004.08.013
- Marr, A. G., and Ingraham, J. L. (1962). Effect of temperature on the composition of fatty acids in *Escherichia coli*. *J. Bacteriol.* 84, 1260–1267.
- Mitchell, A. G., and Martin, C. E. (1997). Fah1p, a *Saccharomyces cerevisiae* cytochrome<sub>b5</sub> fusion protein, and Its *Arabidopsis thaliana* homolog that lacks the cytochrome<sub>b5</sub> domain both function in the  $\alpha$ -hydroxylation of sphingolipid-associated very long chain fatty acids. *J. Biol. Chem.* 272, 28281–28288. doi: 10.1074/jbc.272.45.28281
- Nichols, P. D., Glen, A. S., Antworth, C. P., Hanson, R. S., and White, D. C. (1985). Phospholipid and lipopolysaccharide normal and hydroxy fatty acids as potential signatures for methane-oxidizing bacteria. *FEMS Microbiol. Lett.* 31, 327–335. doi: 10.1016/0378-1097(85)90028-X
- Osborne, K. A., Gray, N. D., Sherry, A., Leary, P., Mejha, O., Bischoff, J., et al. (2017). Methanotroph-derived bacteriohopanepolyol signatures as a function of temperature related growth, survival, cell death and preservation in the geological record. *Environ. Microbiol. Rep.* 9, 492–500. doi: 10.1111/1758-2229.12570
- Oshkin, I. Y., Belova, S. E., Danilova, O. V., Miroshnikov, K. K., Rijpstra, W. I. C., Sinninghe Damsté, J. S., et al. (2016). *Methylovulum psychrotolerans* sp. nov., a cold-adapted methanotroph from low-temperature terrestrial environments, and emended description of the genus *Methylovulum*. *Int. J. Syst. Evol. Microbiol.* 66, 2417–2423. doi: 10.1099/ijsem.0.001046

- Oshkin, I. Y., Miroshnikov, K. K., Belova, S. E., Korzhnikov, A. A., Toshchakov, S. V., and Dedysh, S. N. (2018). Draft genome sequence of *Methylovulum psychrotolerans* Sph1T, an obligate methanotroph from low-temperature environments. *Genome Announc.* 6:e01488-17. doi: 10.1128/genomeA.01488-17
- Poralla, K., Härtner, T., and Kannenberg, E. (1984). Effect of temperature and pH on the hopanoid content of *Bacillus acidocaldarius*. *FEMS Microbiol. Lett.* 23, 253–256. doi: 10.1111/j.1574-6968.1984.tb01073.x
- Rohmer, M., Bouvier-Nave, P., and Ourisson, G. (1984). Distribution of hopanoid triterpenes in prokaryotes. *Microbiology* 130, 1137–1150. doi: 10.1099/00221287-130-5-1137
- Rohmer, M., and Ourisson, G. (1976). Dérivés du bactériohopane: variations structurales et répartition. *Tetrahedron Lett.* 17, 3637–3640. doi: 10.1016/S0040-4039(00)92981-2
- Rush, D., Osborne, K. A., Birgel, D., Kappler, A., Hirayama, H., Peckmann, J., et al. (2016). The bacteriohopanepolyol inventory of novel aerobic methane oxidising bacteria reveals new biomarker signatures of aerobic methanotrophy in marine systems. *PLoS One* 11:e0165635. doi: 10.1371/journal.pone.0165635
- Schmerk, C. L., Bernards, M. A., and Valvano, M. A. (2011). Hopanoid production is required for low-pH tolerance, antimicrobial resistance, and motility in *Burkholderia cenocepacia*. *J. Bacteriol.* 193, 6712–6723. doi: 10.1128/JB.05979-11
- Shivaji, S., and Prakash, J. S. S. (2010). How do bacteria sense and respond to low temperature? *Arch. Microbiol.* 192, 85–95. doi: 10.1007/s00203-009-0539-y
- Siliakus, M. F., van der Oost, J., and Kengen, S. W. M. (2017). Adaptations of archaeal and bacterial membranes to variations in temperature, pH and pressure. *Extremophiles* 21, 651–670. doi: 10.1007/s00792-017-0939-x
- Simonin, P., Tindall, B., and Rohmer, M. (1994). Structure elucidation and biosynthesis of 31-methylhopanoids from *Acetobacter europaeus*. Studies on a new series of bacterial triterpenoids. *Eur. J. Biochem.* 225, 765–771.
- Spencer-Jones, C. L., Wagner, T., Dinga, B. J., Schefuß, E., Mann, P. J., Poulsen, J. R., et al. (2015). Bacteriohopanepolyols in tropical soils and sediments from the Congo River catchment area. *Org. Geochem.* 8, 1–13. doi: 10.1016/j.orggeochem.2015.09.003
- Sundh, I., Bastviken, D., and Tranvik, L. J. (2005). Abundance, activity, and community structure of pelagic methane-oxidizing bacteria in temperate lakes. *Appl. Environ. Microbiol.* 71, 6746–6752. doi: 10.1128/AEM.71.11.6746-6752.2005
- Suutari, M., and Laakso, S. (1994). Microbial fatty acids and thermal adaptation. *Crit. Rev. Microbiol.* 20, 285–328. doi: 10.3109/10408419409113560
- Talbot, H. M., Rohmer, M., and Farrimond, P. (2007a). Rapid structural elucidation of composite bacterial hopanoids by atmospheric pressure chemical ionisation liquid chromatography/ion trap mass spectrometry. *Rapid Commun. Mass Spectrom.* 21, 880–892. doi: 10.1002/rcm.2911
- Talbot, H. M., Rohmer, M., and Farrimond, P. (2007b). Structural characterisation of unsaturated bacterial hopanoids by atmospheric pressure chemical ionisation liquid chromatography/ion trap mass spectrometry. *Rapid Commun. Mass Spectrom.* 21, 1613–1622. doi: 10.1002/rcm.2997
- Ternes, P., Franke, S., Zähringer, U., Sperling, P., and Heinz, E. (2002). Identification and characterization of a sphingolipid  $\Delta 4$ -desaturase family. *J. Biol. Chem.* 277, 25512–25518. doi: 10.1074/jbc.M202947200
- Trotsenko, Y. A., and Murrell, J. C. (2008). Metabolic aspects of aerobic obligate methanotrophy. *Adv. Appl. Microbiol.* 63, 183–229. doi: 10.1016/S0065-2164(07)00005-6
- Tushar, L., Sasikala, C., and Ramana, C. V. (2014). Draft genome sequence of *Rhodomicoccus udaipurensis* JA643<sup>T</sup> with special reference to hopanoid biosynthesis. *DNA Res.* 21, 639–647. doi: 10.1093/dnares/dsu026
- van Winden, J. F. (2011). *Methane Cycling in Peat Bogs: Environmental Relevance of Methanotrophs Revealed by Microbial Lipid Chemistry*. Ph.D. thesis, Utrecht University, Utrecht.
- van Winden, J. F., Reichart, G.-J., McNamara, N. P., Benthien, A., and Damsté, J. S. S. (2012a). Temperature-induced increase in methane release from peat bogs: a mesocosm experiment. *PLoS One* 7:e39614. doi: 10.1371/journal.pone.0039614
- van Winden, J. F., Talbot, H. M., Kip, N., Reichart, G.-J., Pol, A., McNamara, N. P., et al. (2012b). Bacteriohopanepolyol signatures as markers for methanotrophic bacteria in peat moss. *Geochim. Cosmochim. Acta* 77, 52–61. doi: 10.1016/j.gca.2011.10.026
- Vences-Guzmán, M. Á., Guan, Z., Ormeño-Orrillo, E., González-Silva, N., López-Lara, I. M., Martínez-Romero, E., et al. (2011). Hydroxylated ornithine lipids increase stress tolerance in *Rhizobium tropici* CIAT899. *Mol. Microbiol.* 79, 1496–1514. doi: 10.1111/j.1365-2958.2011.07535.x
- Vorachek-Warren, M. K., Carty, S. M., Lin, S., Cotter, R. J., and Raetz, C. R. H. (2002). An *Escherichia coli* mutant lacking the cold shock-induced palmitoleyltransferase of lipid A biosynthesis: absence of unsaturated acyl chains and antibiotic hypersensitivity at 12 degrees C. *J. Biol. Chem.* 277, 14186–14193. doi: 10.1074/jbc.M200408200
- Wakeham, S. G., Pease, T. K., and Benner, R. (2003). Hydroxy fatty acids in marine dissolved organic matter as indicators of bacterial membrane material. *Org. Geochem.* 34, 857–868. doi: 10.1016/S0146-6380(02)00189-4
- Wan, X., Peng, Y.-F., Zhou, X.-R., Gong, Y.-M., Huang, F.-H., and Moncalián, G. (2016). Effect of cerulenin on fatty acid composition and gene expression pattern of DHA-producing strain *Colwellia psychrerythraea* strain 34H. *Microb. Cell Fact.* 15:30. doi: 10.1186/s12934-016-0431-9
- Wang, C., Bendle, J., Yang, Y., Yang, H., Sun, H., Huang, J., et al. (2016). Impacts of pH and temperature on soil bacterial 3-hydroxy fatty acids: development of novel terrestrial proxies. *Org. Geochem.* 94, 21–31. doi: 10.1016/j.orggeochem.2016.01.010
- Waterhouse, A. M., Procter, J. B., Martin, D. M. A., Clamp, M., and Barton, G. J. (2009). Jalview Version 2—a multiple sequence alignment editor and analysis workbench. *Bioinformatics* 25, 1189–1191. doi: 10.1093/bioinformatics/btp033
- Welander, P. V., Hunter, R. C., Zhang, L., Sessions, A. L., Summons, R. E., and Newman, D. K. (2009). Hopanoids play a role in membrane integrity and pH homeostasis in *Rhodospseudomonas palustris* TIE-1. *J. Bacteriol.* 191, 6145–6156. doi: 10.1128/JB.00460-09
- Welander, P. V., and Summons, R. E. (2012). Discovery, taxonomic distribution, and phenotypic characterization of a gene required for 3-methylhopanoid production. *Proc. Natl. Acad. Sci. U.S.A.* 109, 12905–12910. doi: 10.1073/pnas.1208255109
- Wollenweber, H.-W., and Rietschel, E. T. (1990). Analysis of lipopolysaccharide (lipid A) fatty acids. *J. Microbiol. Methods* 11, 195–211. doi: 10.1016/0167-7012(90)90056-C
- Wörmer, L., Lipp, J. S., Schröder, J. M., and Hinrichs, K.-U. (2013). Application of two new LC–ESI–MS methods for improved detection of intact polar lipids (IPLs) in environmental samples. *Org. Geochem.* 59, 10–21. doi: 10.1016/j.orggeochem.2013.03.004

**Conflict of Interest Statement:** The authors declare that the research was conducted in the absence of any commercial or financial relationships that could be construed as a potential conflict of interest.

Copyright © 2019 Bale, Rijpstra, Sahonero-Canavesi, Oshkin, Belova, Dedysh and Sinnighe Damsté. This is an open-access article distributed under the terms of the Creative Commons Attribution License (CC BY). The use, distribution or reproduction in other forums is permitted, provided the original author(s) and the copyright owner(s) are credited and that the original publication in this journal is cited, in accordance with accepted academic practice. No use, distribution or reproduction is permitted which does not comply with these terms.