

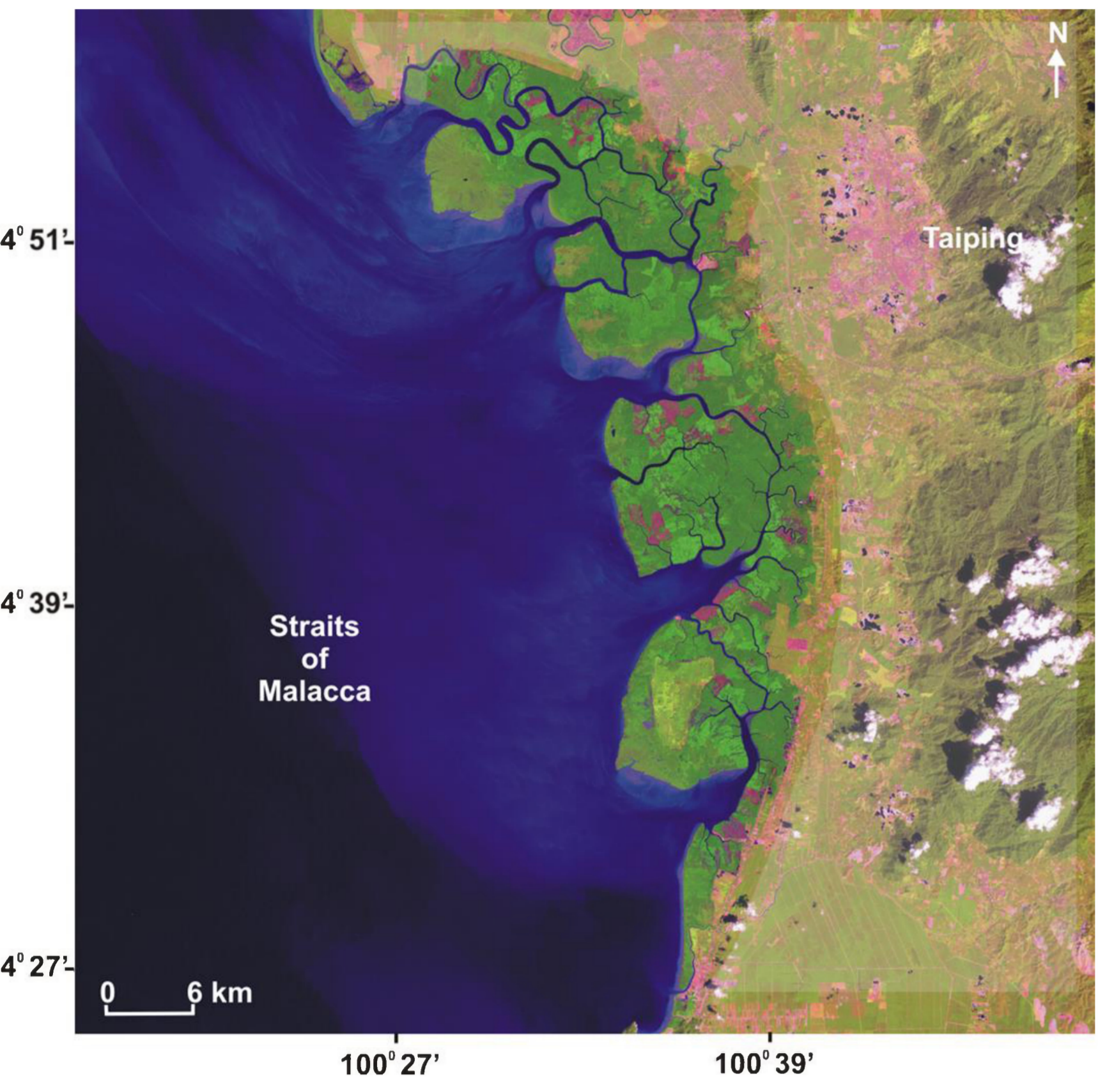
Melissa QUISPE ZUNIGA¹, Behara SATYANARAYANA², Cyril PIOU³, Uta BERGER⁴, Mohd-Lokman HUSAIN², Sulong IBRAHIM² & Farid DAHDOUH-GUEBAS^{1,5}

¹ Laboratory of Plant Biology and Nature Management, Vrije Universiteit Brussel (VUB), B 1050 Brussels, Belgium
² Institute of Oceanography and Environment (INOS), Universiti Malaysia Terengganu (UMT), 21030 Kuala Terengganu, Malaysia
³ Centre de coopération internationale en recherche agronomique pour le développement (CIRAD), UPR Bioagresseurs : Analyse et Matrise du Risque, France
⁴ Institute of Forest Growth and Forest Computer Sciences, Technische Universität Dresden (TUD), Germany
⁵ Laboratory of Systems Ecology and Resource Management, Department of Organism Biology, Université Libre de Bruxelles (ULB), B1050, Brussels, Belgium



Introduction

- The Matang Mangrove Forest Reserve (MMFR: 40, 288 ha) is well known for its systematic management since 1902.
- Even after >100 years, it is still considered as the best (sustainably) managed mangrove forest in the world.
- The productive (*Rhizophora*) forest is managed via 30 years rotation with two artificial thinnings at 15 and 20 years.
- While the poles extracted from thinnings are used for piling, the 30-year old greenwood is used for charcoal production.
- However, the scientific literature on how this ecologic-economic system is maintained consistently and its importance for local livelihoods is still scarce.



Objectives

- To understand the ongoing ecologic-economic system at the MMFR
- To assess the role of local people in mangrove management
- To improve the silviculture management by building an ecologic-economic (Agent-Based) model

Methodology

1. Questionnaire-based surveys at the three administrative zones - Kuala Sepetang, Kuala Trong and Sungai Kerang, of the MMFR (February 2014).
2. Total number of interviews conducted:
 - Charcoal kiln contractors : 26
 - Pole contractors : 8
 - Workers (forest cutters, transporters, kiln workers, etc.): 96
 - Wholesalers / exporters: 4
3. Parameterization into the ecologic-economic model (NetLogo v 5.04).



Preliminary Results

Table 1: The monthly income (in MYR) of a forest worker in the vicinity of MMFR

Job	Income		Minimum monthly income
	Minimum	Maximum	
Forest cutter	720	6000	300 to 1200
Boat driver	720	2000	
Logs arranger* (for kiln)	54	500	
Fire monitor*	100	450	
Charcoal bearer*	50	124	
Packing person*	32	1800	

*part-time profession (1MYR=0.2294 EUR)

Figure 1: Proportion of the interviewed personnel at charcoal factory

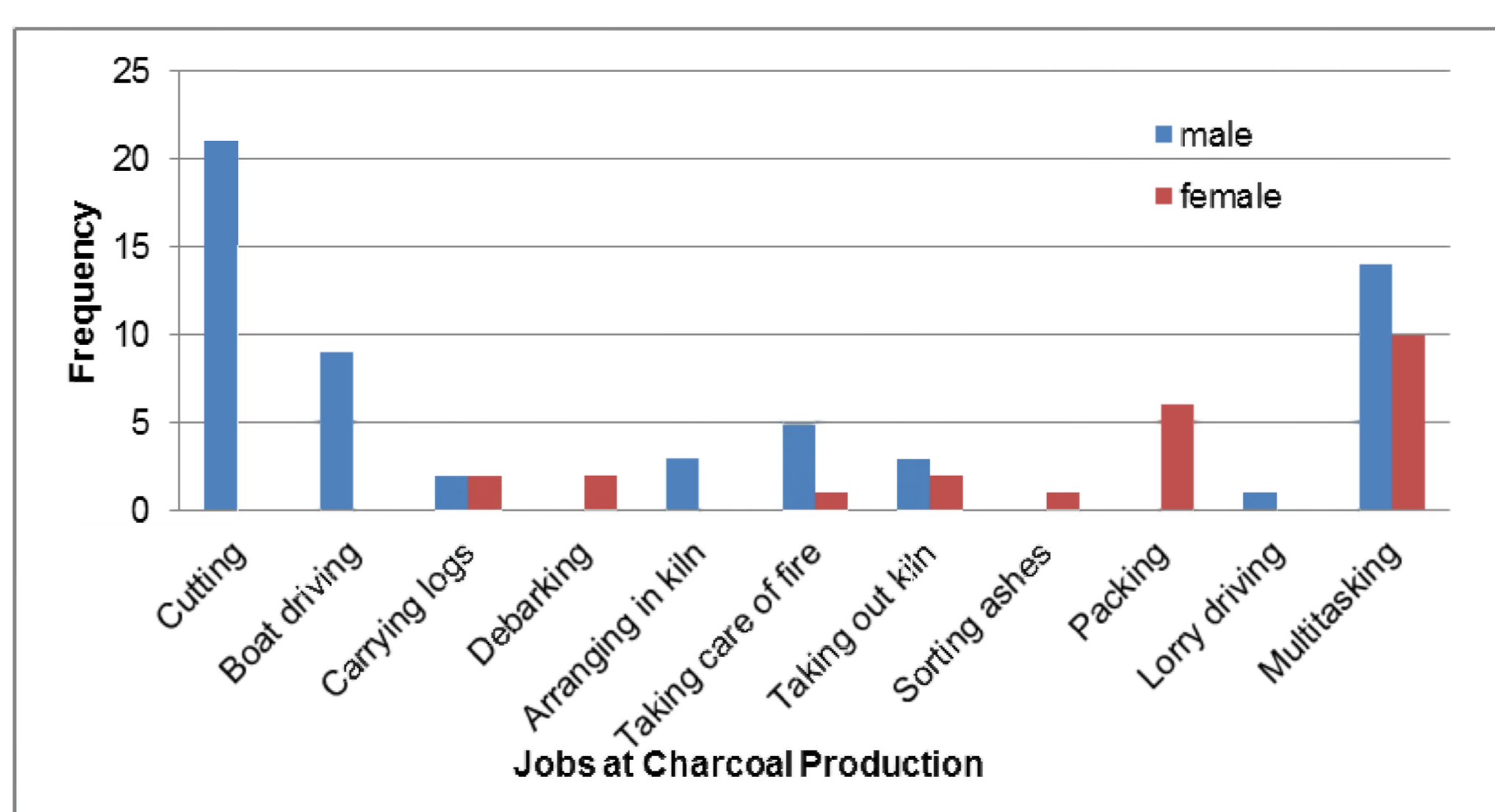
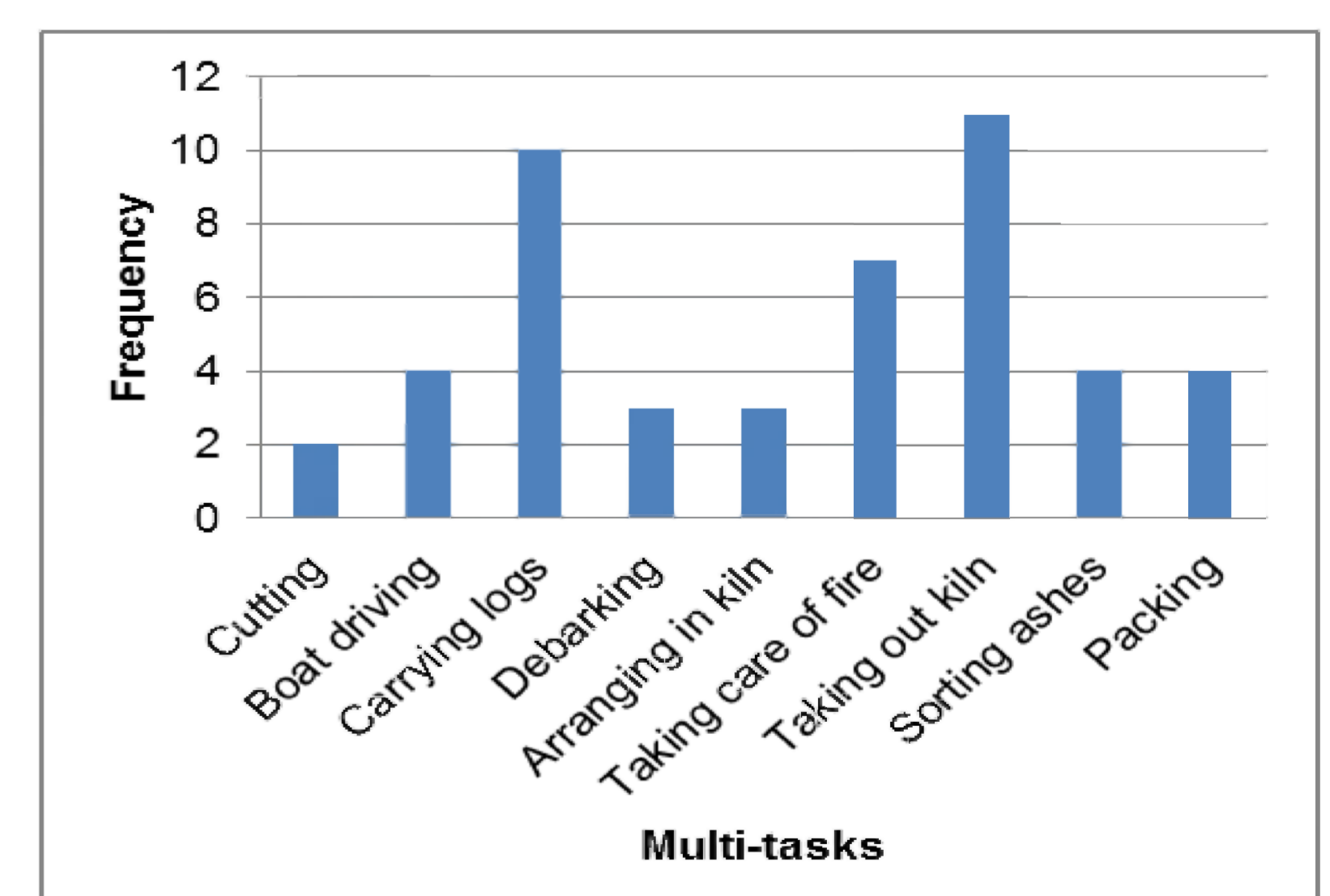


Figure 2: Frequency of the multi-task workers at charcoal factory



Ongoing Research Tasks

- In-depth data analyses and interpretation (including relevant statistics)
- Calibration of the model for implementing new relations between agents involved in the charcoal and the poles production (including tradeoff issues)

Acknowledgements

Authors are grateful to the financial and administrative support extended by the UMT, Perak State Forestry Department, ULB and VUB. Special thanks are also due to VLIZ for supporting the Masters study of MQZ.

