

Marijn Rabaut

Lanice conchilega, fisheries and marine conservation



Towards an ecosystem approach to marine management

Wondyrchoun

Lanice conchilega, Fisheries and marine conservation

Marijn Rabaut

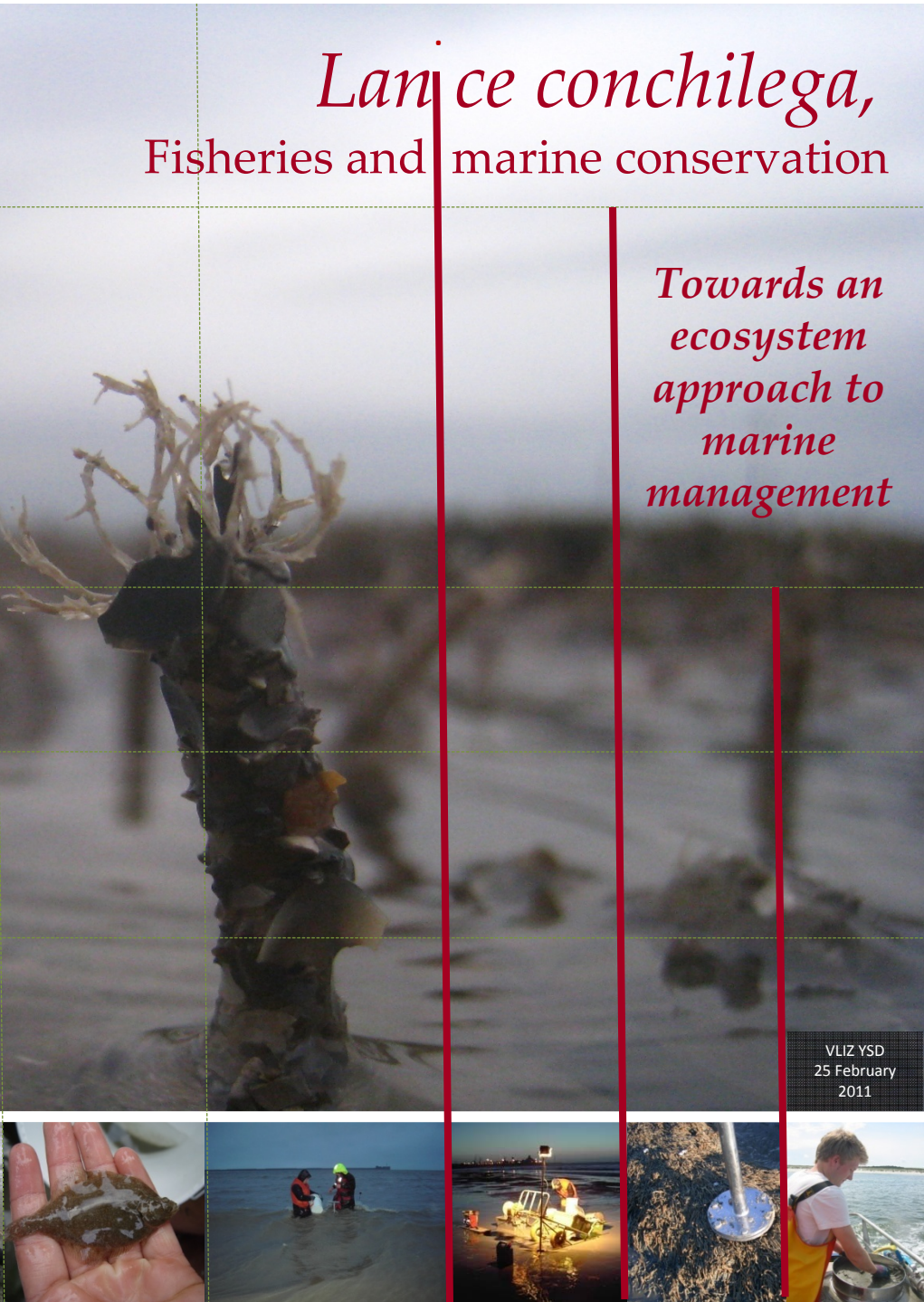
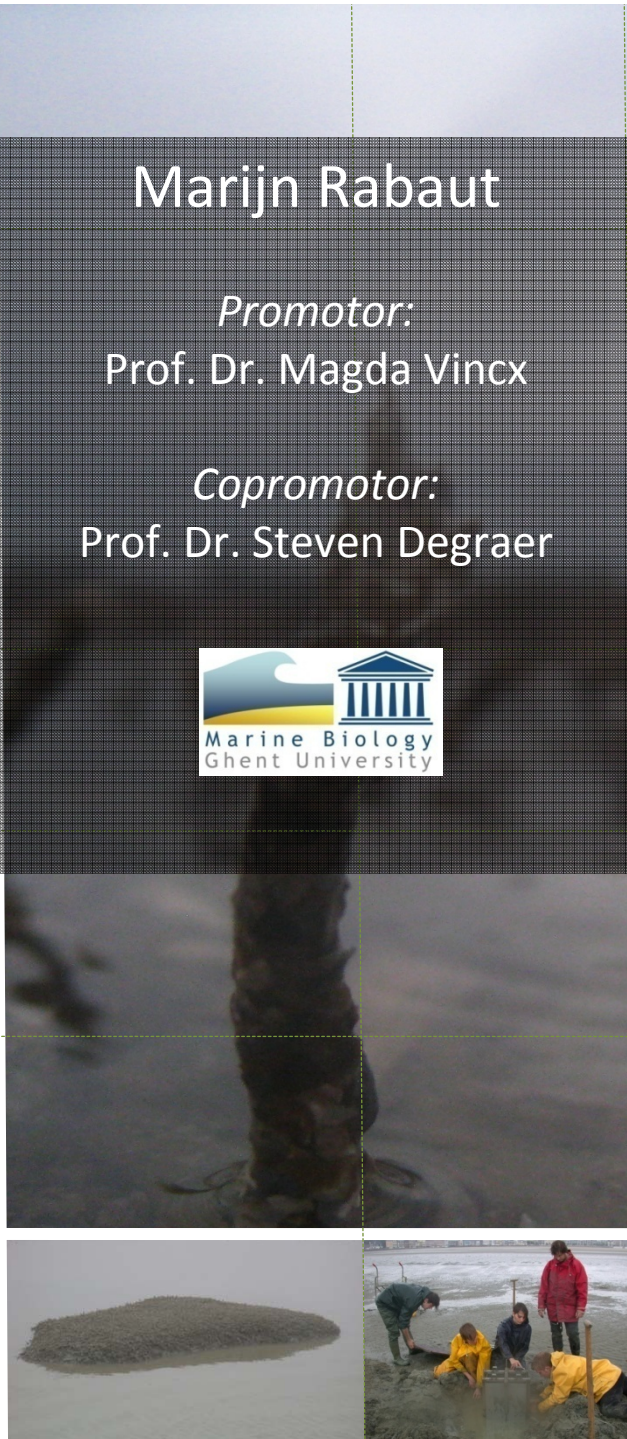
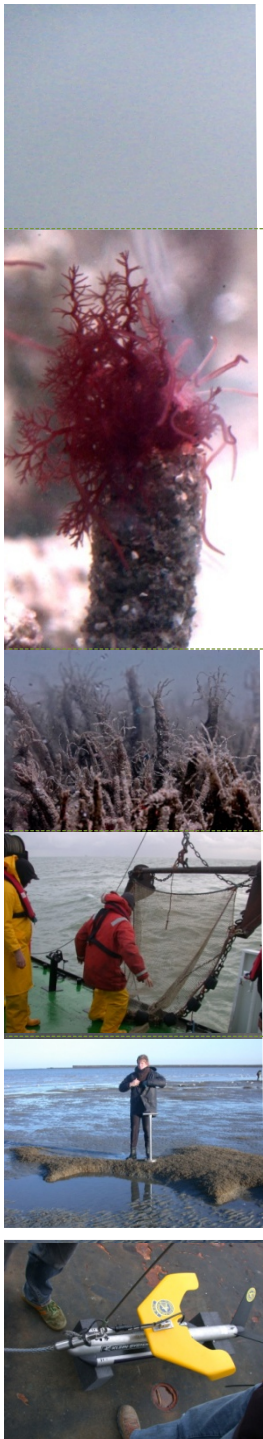
Promotor:
Prof. Dr. Magda Vincx

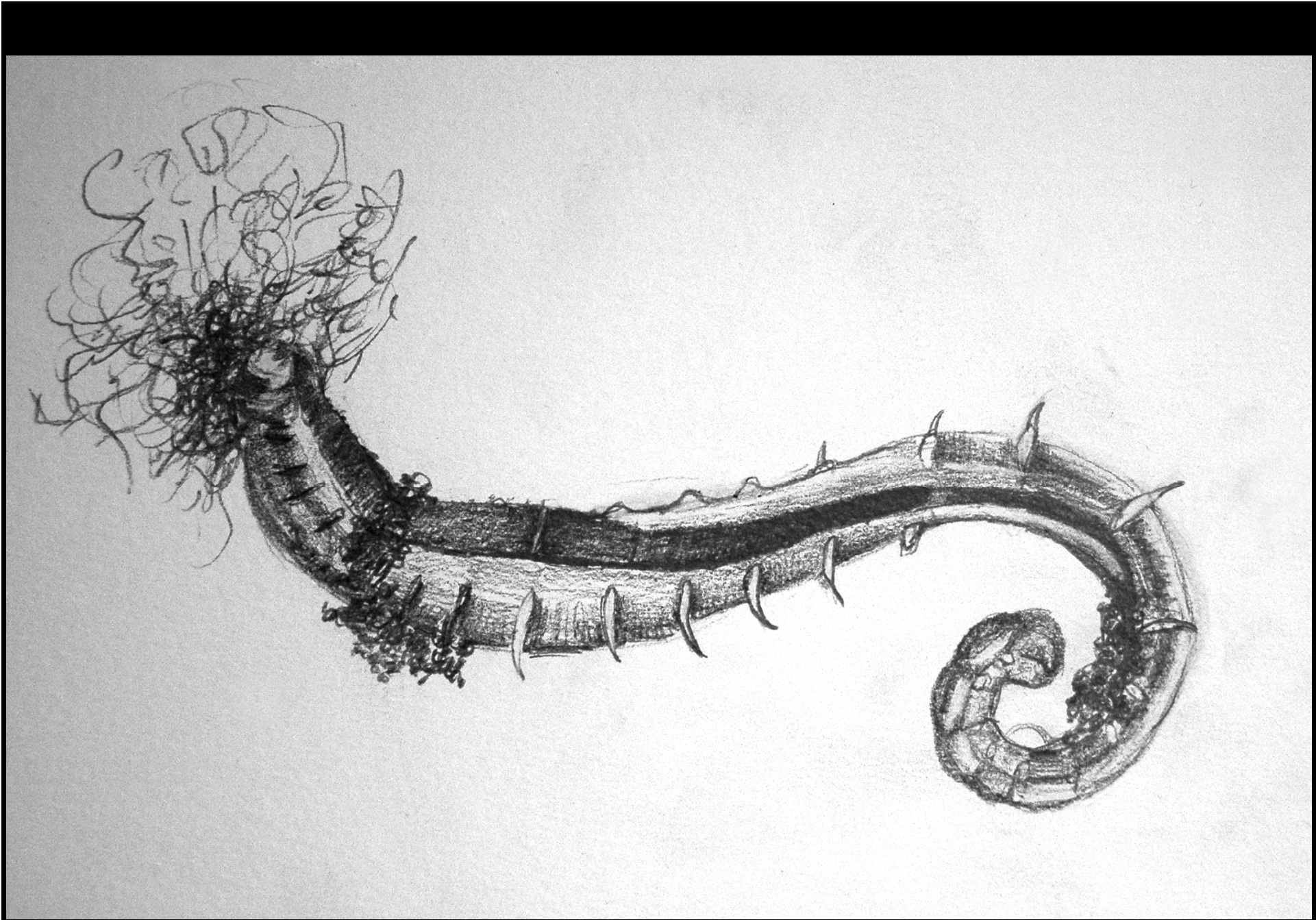
Copromotor:
Prof. Dr. Steven Degraer



*Towards an
ecosystem
approach to
marine
management*

VLIZ YSD
25 February
2011









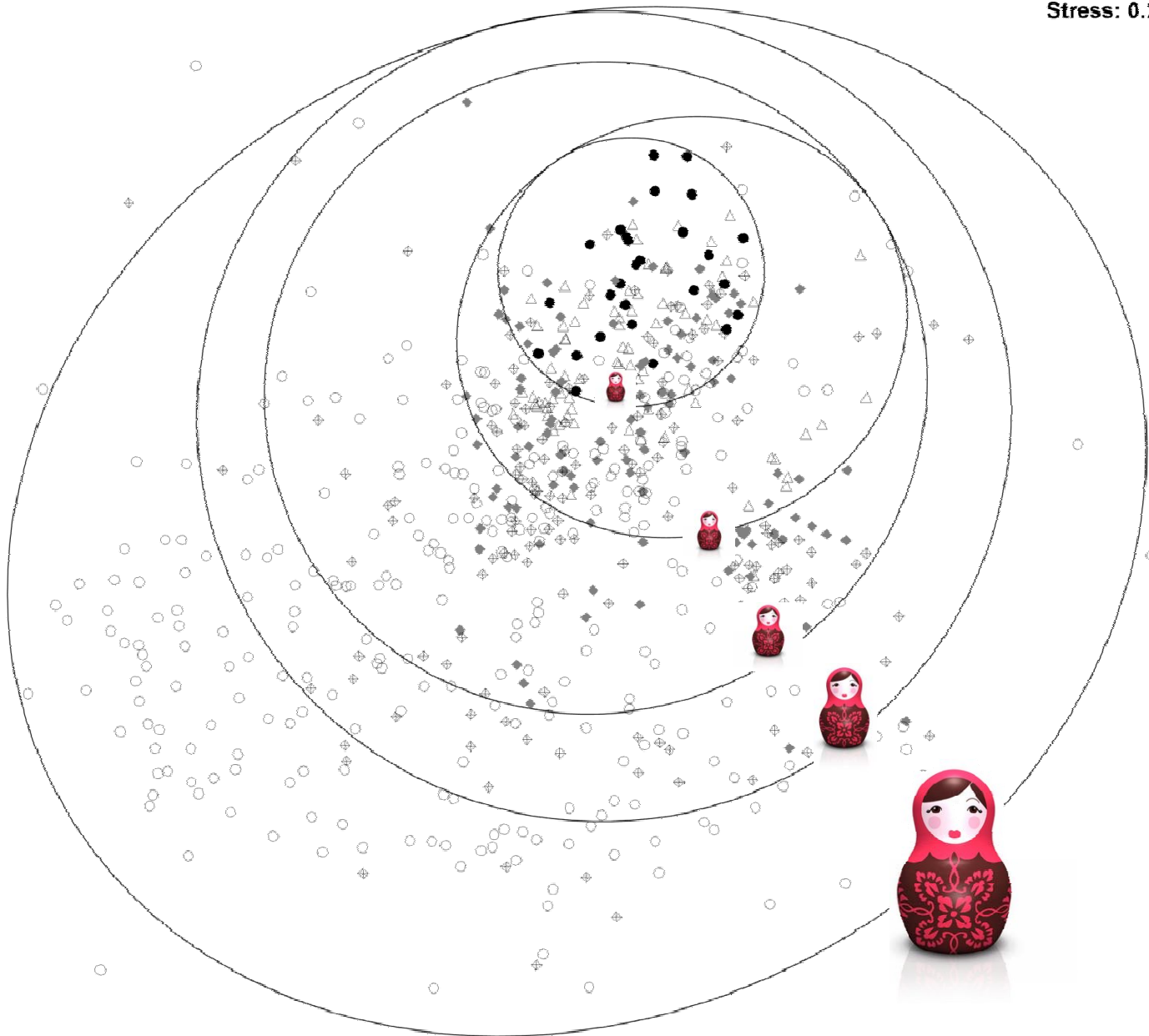
© Studio Lore (L. Rabaut)

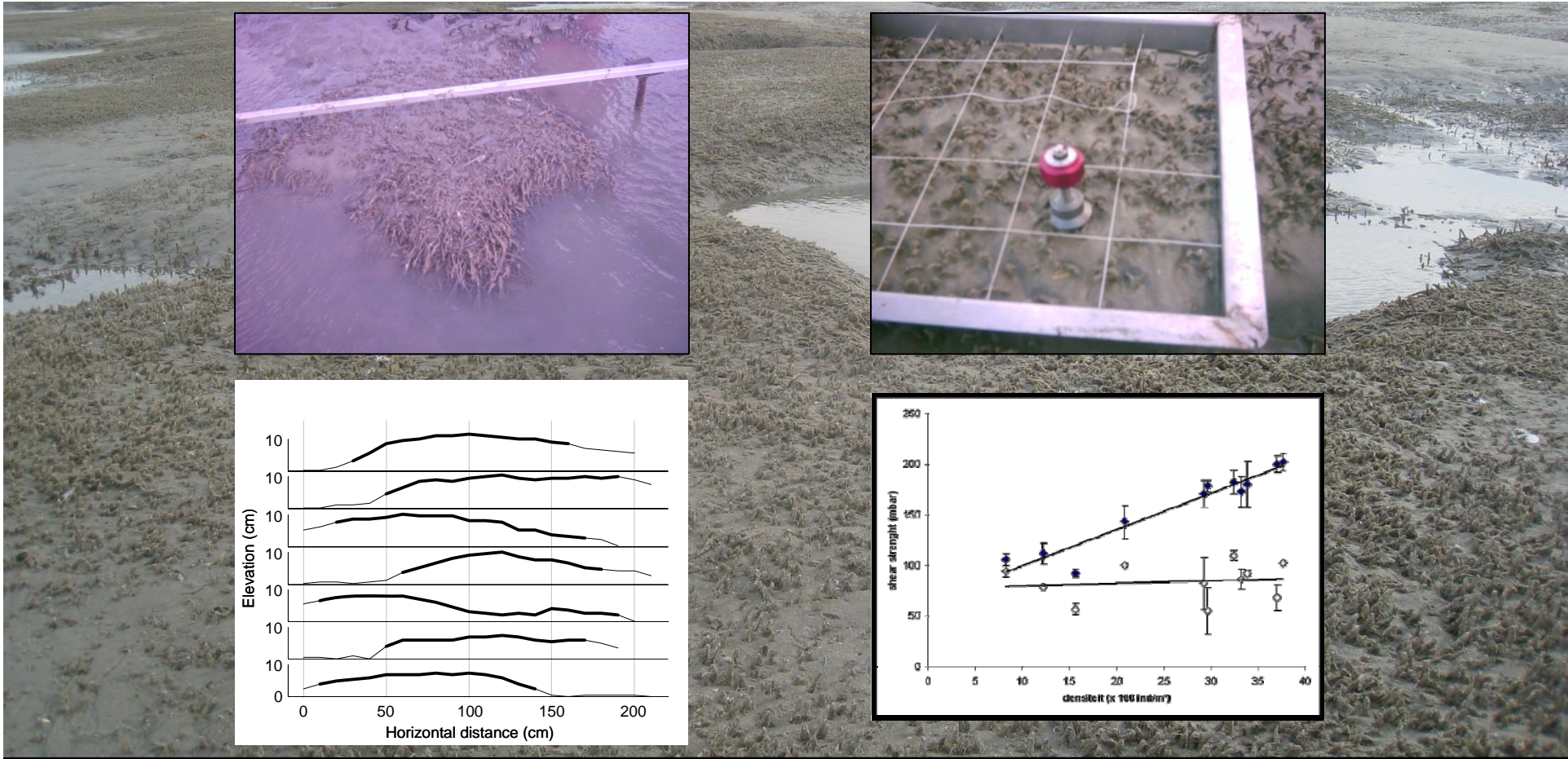






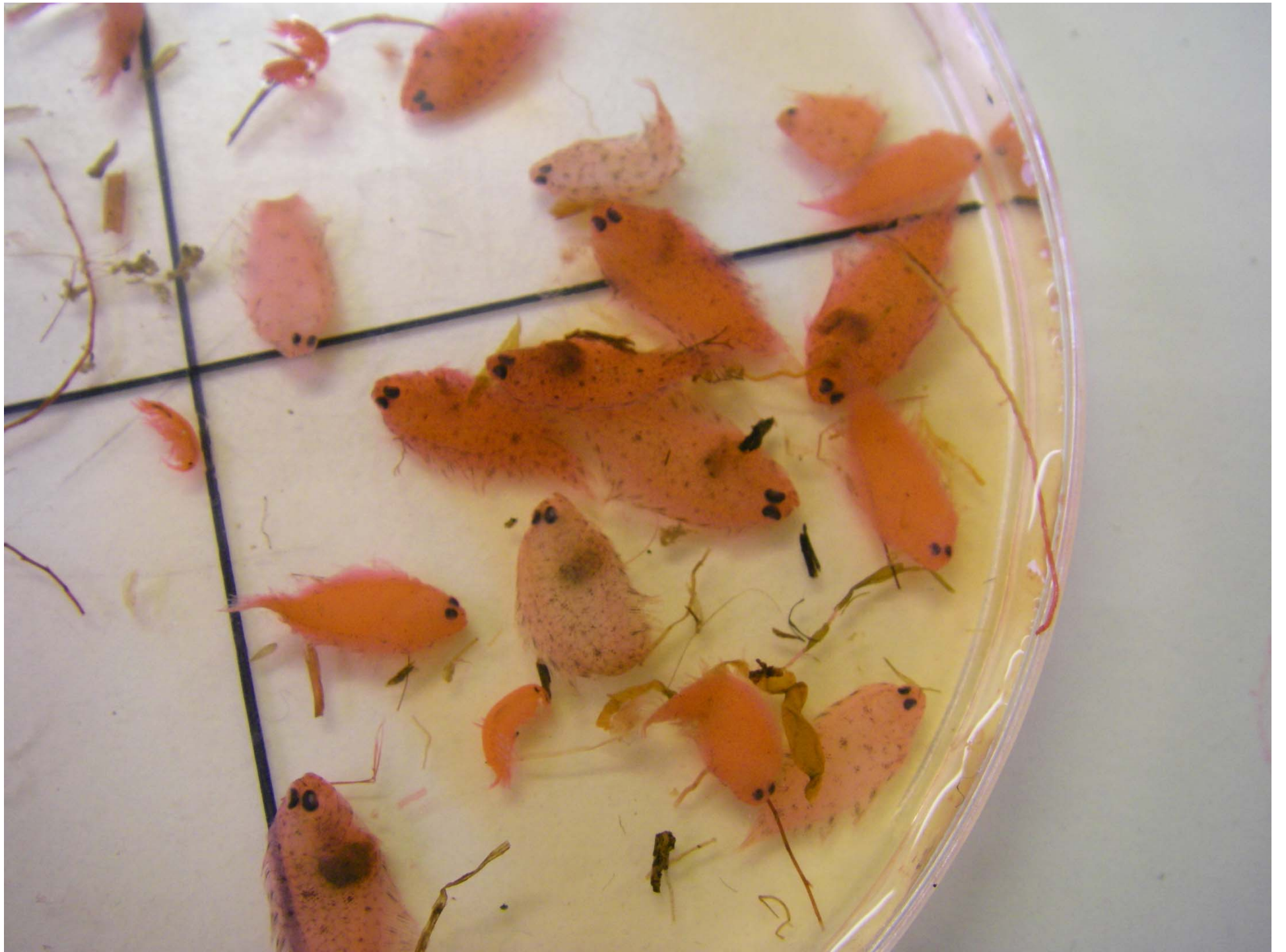
Stress: 0.22

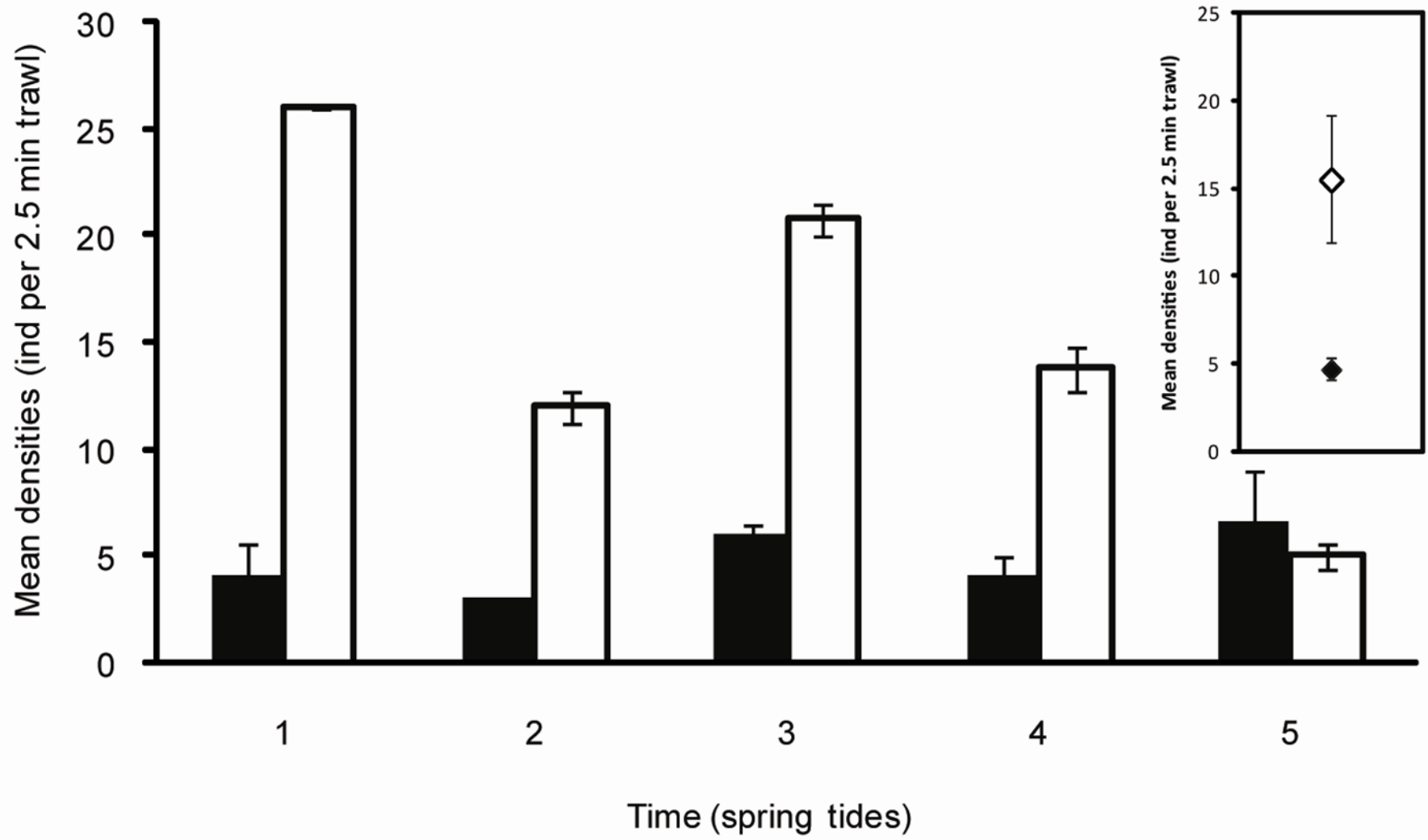






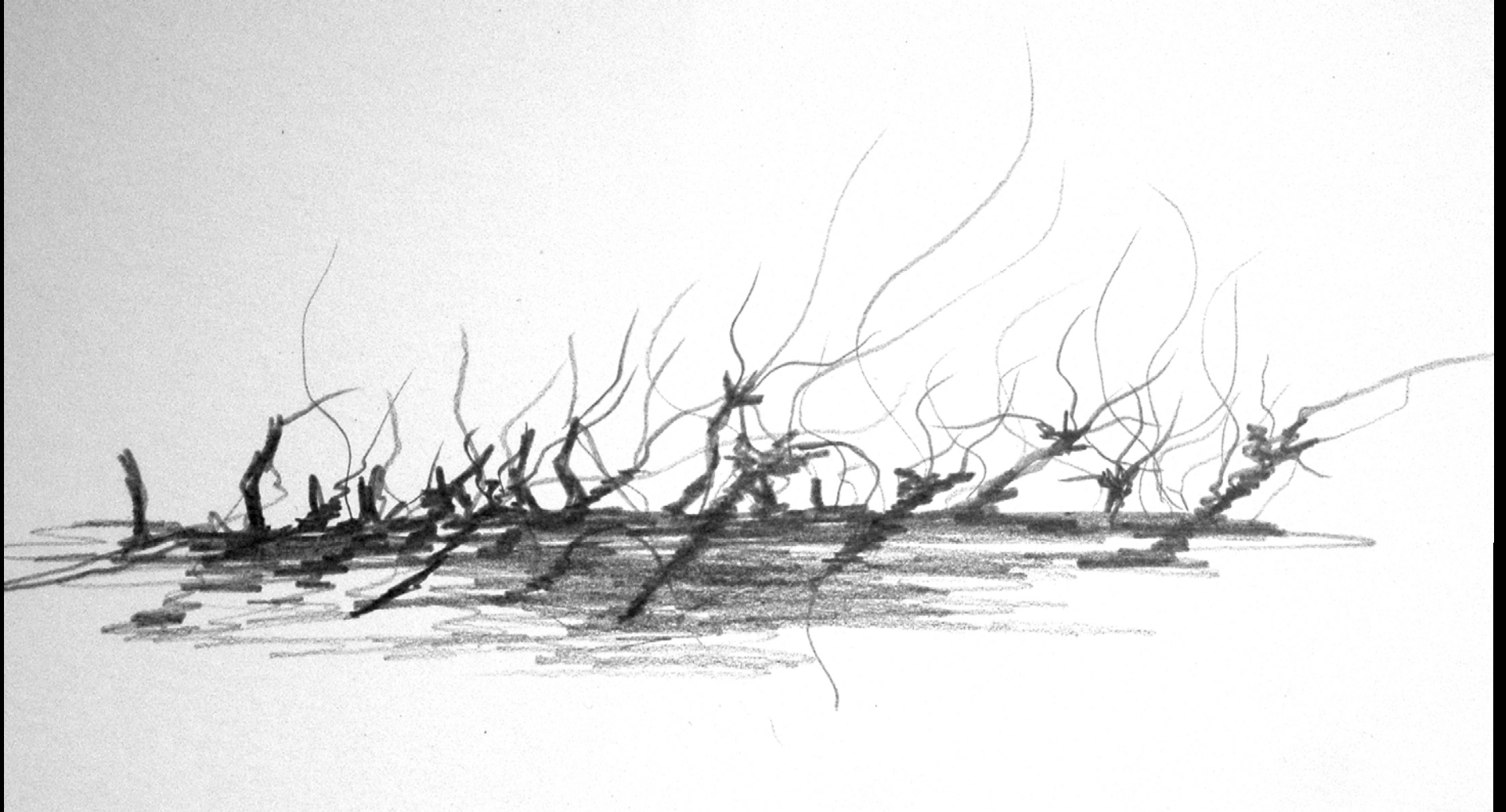




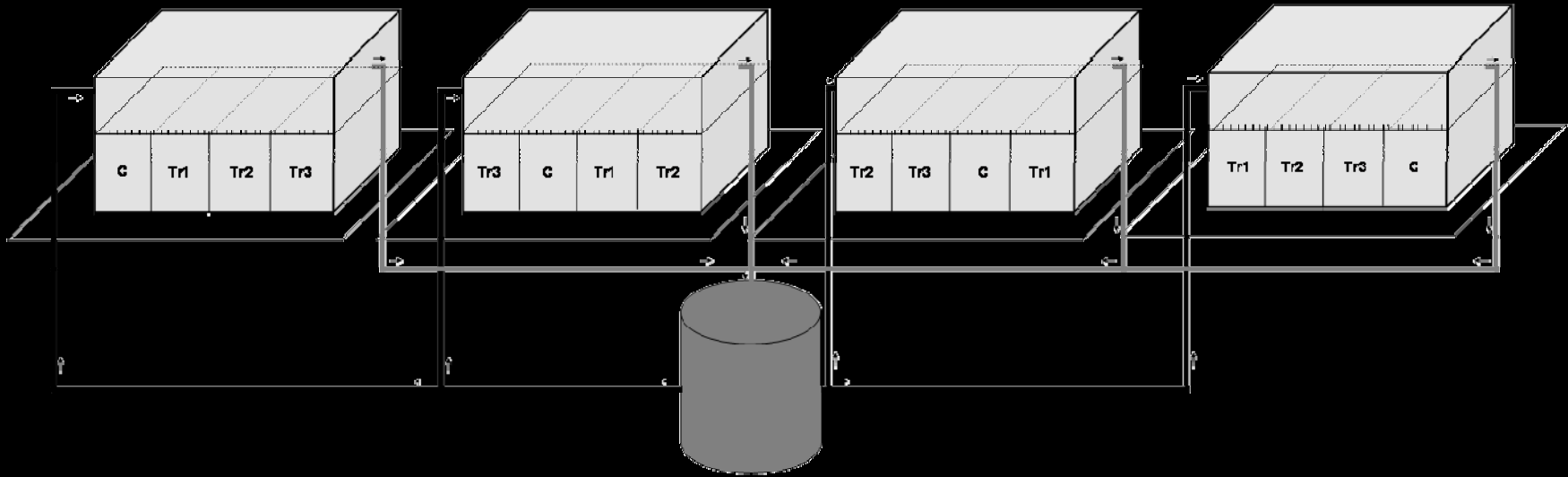


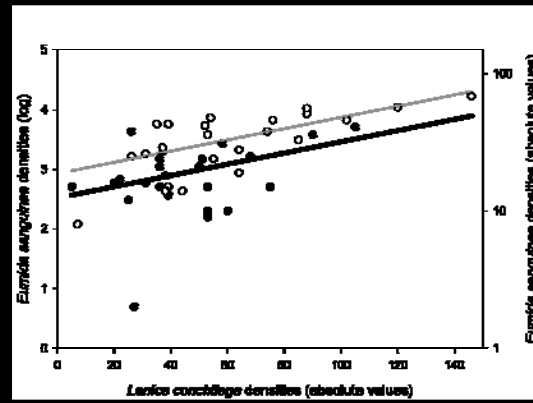
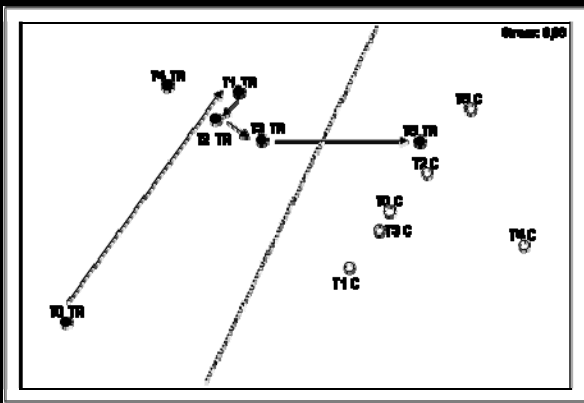
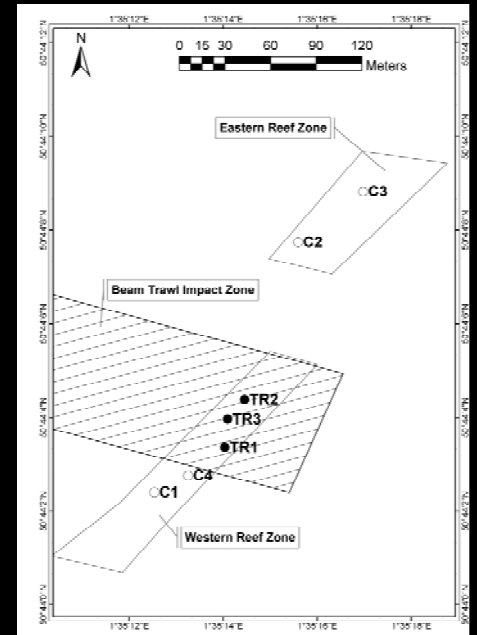


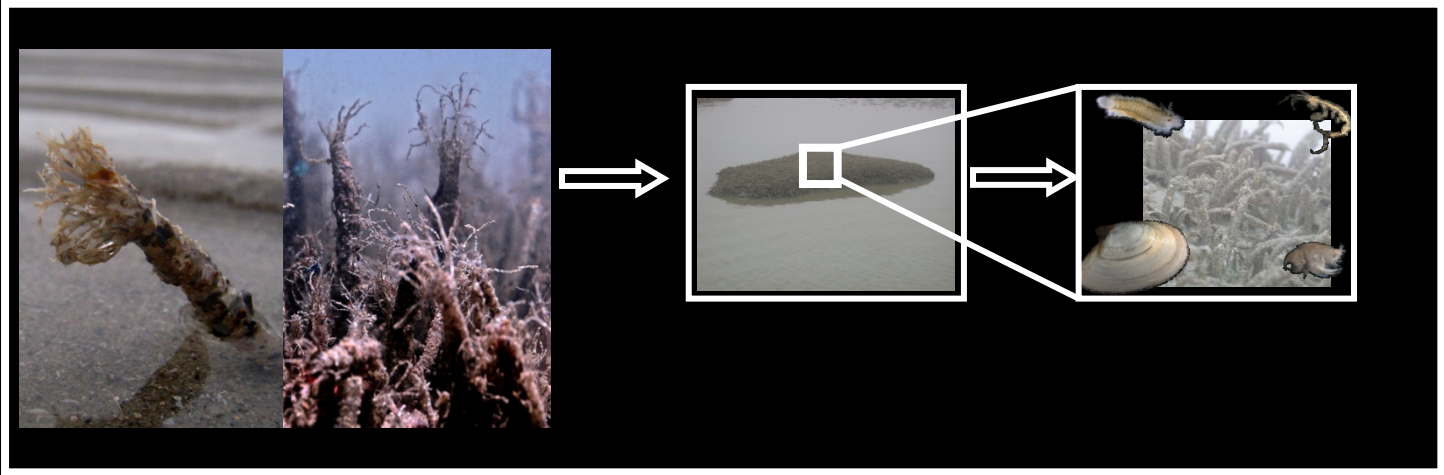








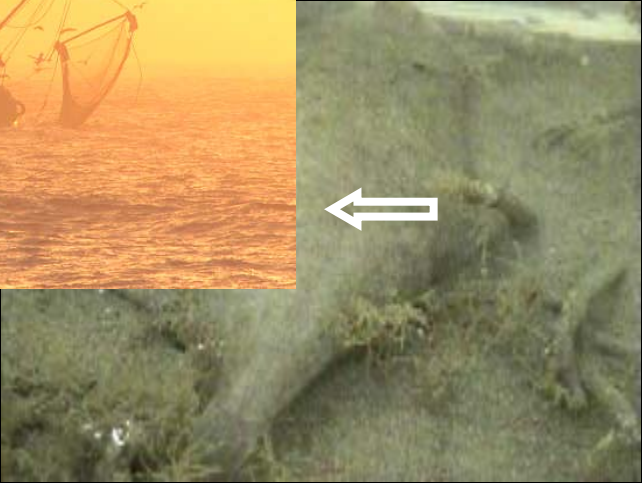
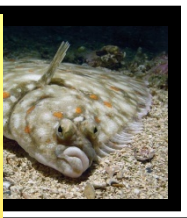


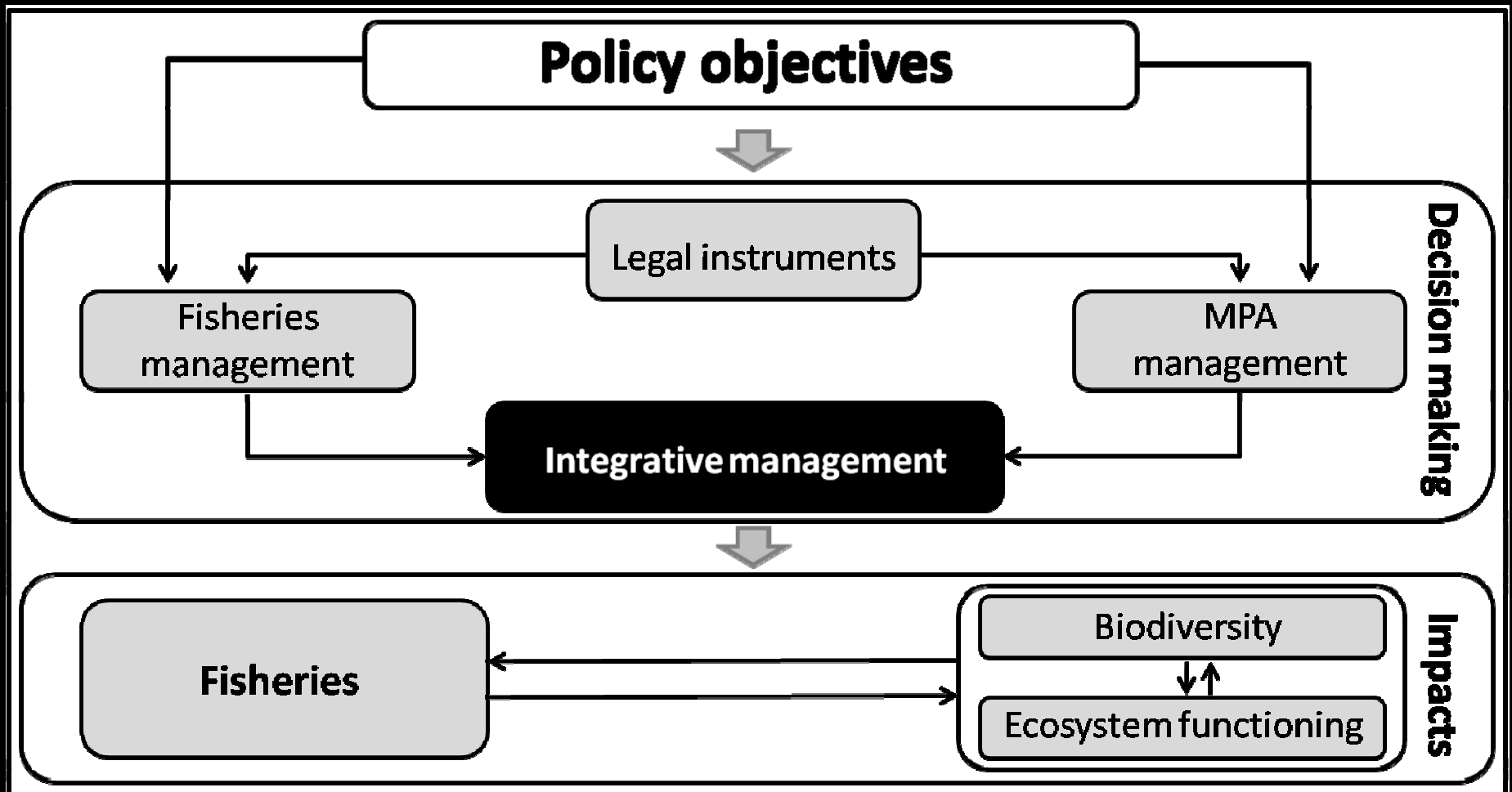


**Habitat
modification**



Interactions





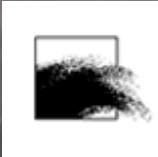
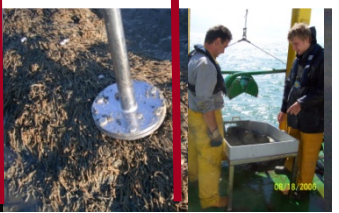
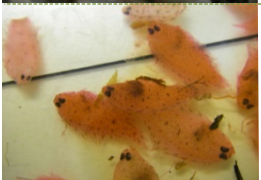
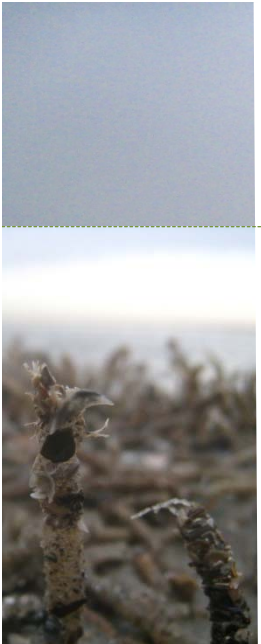




FLANDERS IN THE FIFTEENTH CENTURY

Lanice conchilega, Fisheries and marine conservation

*Towards an
ecosystem
approach to
marine
management*



Marijn Rabaut

Lanice conchilega, fisheries and marine conservation



Towards an ecosystem approach to marine management